

REFERENCE DATA SERIES No. 1
2012 Edition

Energy, Electricity and Nuclear Power Estimates for the Period up to 2050



IAEA

International Atomic Energy Agency

REFERENCE DATA SERIES No. 1

**ENERGY, ELECTRICITY AND
NUCLEAR POWER ESTIMATES
FOR THE PERIOD UP TO 2050**

2012 Edition

INTERNATIONAL ATOMIC ENERGY AGENCY
VIENNA, 2012

ENERGY, ELECTRICITY AND
NUCLEAR POWER ESTIMATES
FOR THE PERIOD UP TO 2050
IAEA-RDS-1/32
ISBN 978-92-0-133510-4
ISSN 1011-2642

Printed by the IAEA in Austria
August 2012

CONTENTS

Introduction	5
Grouping of countries and areas	9
Table 1. Nuclear power reactors in the world (end of 2011)	12
Figure 1. Nuclear share of total electricity generation in 2011	14
Table 2. Number of countries with nuclear power reactors in operation or under construction (end of 2011)	15
Table 3. Estimates of total and nuclear electrical generating capacity	17
Figure 2. Total and nuclear electrical generating capacity	18
Table 4. Estimates of total electricity generation and contribution by nuclear power	21
Figure 3. Percentage of electricity supplied by nuclear power	22
Table 5. Estimates of total energy requirement (EJ), percentage used for electricity generation, and percentage supplied by nuclear energy	25
Figure 4. Estimates of total energy requirement	26
Table 6. Total energy requirement (EJ) by type of fuel in 2011	29
Figure 5. Total energy requirement by fuel type in 2011	30
Figure 6. Breakdown of world total energy requirement during the period 1970–2011	32
Table 7. Fuel shares (%) of total energy requirement in 2011	35
Table 8. Fuel use (EJ) for electricity generation by type of fuel in 2011	36
Table 9. Percentage contribution of each fuel type to electricity generation in 2011	37
Table 10. Estimates of population growth by region	39
Figure 7. Population estimates	40
Table 11. Estimates of total energy and electricity requirement per capita	43

Figure 8.	Total energy requirement per capita.	44
Figure 9.	Total electricity requirement per capita.	46
Table 12.	Average annual growth rates during the period 2001–2011 (%)	49
Figure 10.	Average annual growth rates during the period 2001–2011	50
Table 13.	Estimates of average annual growth rates during the period 2011–2030 (%)	53

Introduction

Reference Data Series No. 1 (RDS-1) is an annual publication — currently in its thirty-second edition — containing estimates of energy, electricity and nuclear power trends up to the year 2050.

RDS-1 starts with a summary of the situation of nuclear power in IAEA Member States as of the end of 2011. The data on nuclear power presented in Tables 1 and 2 are based on actual statistical data collected by the IAEA's Power Reactor Information System (PRIS). However, energy and electricity data for 2011 are estimated, as the latest information available from the United Nations Department of Economic and Social Affairs is for 2009 only. Population data originate from the World Population Prospects (2010 revision), published by the Population Division of the United Nations Department of Economic and Social Affairs. The 2011 values again are estimates.

As in previous editions, projections of future energy and electricity demand and the role of nuclear power are presented as low and high estimates encompassing the inherent uncertainties involved in projecting trends. The RDS-1 estimates should be viewed as very general growth trends whose validity must be constantly subjected to critical review.

Many international, national and private organizations routinely engage in energy demand and supply projections, including nuclear power. These projections are based on a multitude of different assumptions and aggregating procedures, which make a straightforward comparison and synthesis very difficult. The basic differences refer to such fundamental input assumptions as:

- Economic growth;
- Correlation of economic growth and energy use;
- Technology performance and costs;
- Energy resource availability and future fuel prices;
- Energy policy and physical, environmental and economic constraints.

The projections presented in this publication are based on a compromise between:

- National projections supplied by each country for a recent OECD/NEA study;

- Indicators of development published by the World Bank in its World Development Indicators;
- Global and regional energy, electricity and nuclear power projections made by other international organizations.

More specifically, the estimates of future nuclear generating capacity presented in Table 3 are derived from a country by country 'bottom up' approach. They are established by a group of experts participating each year in the IAEA's consultancy on Nuclear Capacity Projections and based upon a review of nuclear power projects and programmes in Member States. The experts consider all the operating reactors, possible licence renewals, planned shutdowns and plausible construction projects foreseen for the next several decades. They build the projections project by project by assessing the plausibility of each in light of, first, the low projection's assumptions and, second, the high projection's assumptions.

The low and high estimates reflect contrasting, but not extreme, underlying assumptions on the different driving factors that have an impact on nuclear power deployment. These factors, and the ways they might evolve, vary from country to country. The estimates presented provide a plausible range of nuclear capacity growth by region and worldwide. They are not intended to be predictive nor to reflect the whole range of possible futures from the lowest to the highest feasible.

The low case represents expectations about the future if current trends continued and there were few changes in policies affecting nuclear power other than those already in the pipeline. This case was explicitly designed to produce a 'conservative but plausible' set of projections. Additionally, the low case did not automatically assume that targets for nuclear power growth in a particular country would necessarily be achieved. These assumptions are relaxed in the high case.

The high case projections are much more optimistic, but still plausible and technically feasible. The high case assumes that the current financial and economic crises will be overcome in the not too distant future and past rates of economic growth and electricity demand, especially in the Far East, would essentially resume. In addition, the high

case assumes the implementation of stringent policies globally targeted at mitigating climate change.

Developing projections in 2012 remained challenging given that policy responses to the Fukushima accident remain to be determined in some regions, notably in the Far East. Since this region is anticipated to have the greatest growth in nuclear capacity to 2030, policy responses could yet have a significant impact on the scenario projections. To a lesser degree, the same is true in other regions with the exception, perhaps, of Western Europe. Once greater certainty about the causes, impacts, policy revisions and regulatory responses is established, these projections will likely need to be refined. There is considerable uncertainty about the actual impacts of the Fukushima accident in some regions. As time goes by, this uncertainty should hopefully be reduced.

Governments have asked a number of utilities to suspend operation of specific plants in response to the Fukushima accident. In this case, it should be kept in mind that there is a distinction between effective capacity (supplying electricity to the grid) and installed nominal capacity (connected to the grid but not supplying electricity) that may not be recognized in the published data.

The on-going financial crisis is still expected to present challenges in nuclear energy development. The assumption adopted by the expert group was that the current economic challenges, in addition to the Fukushima accident, are expected to delay, temporarily, deployment of some nuclear power plants. Moreover, the low price of natural gas and reduced demand for electricity are expected to impact nuclear growth prospects in some regions of the developed world. However, the underlying fundamentals of population growth and demand for electricity in the developing world, as well as climate change concerns, security of energy supply and price volatility for other fuels continue to point to nuclear generating capacity playing an important role in the energy mix in the longer term.

Accordingly to the 2012 projections, the world's installed nuclear power capacity expanded from 369 gigawatts (GW(e)) as of end of 2011 to 456 GW(e) in 2030, i.e. a decrease of 9% compared with last years's projection. In the updated high projection, it grows to 740 GW(e) in 2030,

down by less than 1% from last year, reflecting continued interest in nuclear power in some regions, particularly in the developing world. Some of the effects of the Fukushima accident may include earlier than anticipated retirements, delayed or possibly cancelled new builds and increased costs owing to changing regulatory requirements.

With respect to projections to 2050, assumptions were made about the general rate of development and retirements. Given all of the uncertainties, these estimates should be considered as suggestive of the actual outcomes, based on currently anticipated trends.

The data on electricity produced by nuclear power plants are converted to joules based on the average efficiency of a nuclear power plant, i.e. 33%; data on electricity generated by geothermal heat are converted to joules based on the average efficiency of a geothermal power plant, i.e. 10%. The conversion to joules of electricity generated by hydropower or by other non-thermal sources such as wind, tide and solar is based on the energy content of the electricity generated (the equivalent of assuming 100% efficiency).

The total energy requirement has been calculated by summing the primary energy production, the net energy trade minus changes in international bunkers and domestic stocks.

The values shown in Table 9 refer to primary energy used for the generation of electricity. Owing to differences in conversion efficiencies, the percentage values are different from the shares of electricity generation presented in Tables 1 and 5.

Energy Units

1 MW(e) = 10^6 watts (electrical)

1 GW(e) = 1000 MW(e) = 10^9 watts (electrical)

1 GJ = 1 gigajoule = 10^9 joules

1 EJ = 1 exajoule = 10^{18} joules

1 EJ = 23.9 megatonnes of oil equivalent (Mtoe)

1 TW·h = 1 terawatt-hour = 10^9 kW·h = 3.6×10^{-3} EJ

GROUPING OF COUNTRIES AND AREAS

The countries and geographical areas included in each grouping are listed below (IAEA Member States are denoted by an asterisk)

North America

Canada* United States of America*

Latin America

Anguilla Haiti*
Antigua and Barbuda Honduras*
Argentina* Jamaica*
Aruba Martinique
Bahamas Mexico*
Barbados Montserrat
Belize* Netherlands Antilles
Bermuda Nicaragua*
Bolivia* Panama*
Brazil* Paraguay*
Cayman Islands Peru*
Chile* Puerto Rico
Colombia* S. Georgia & S. Sandwich Islands
Costa Rica* Saint Kitts and Nevis
Cuba* Saint Lucia
Dominica* Saint Pierre and Miquelon
Dominican Republic* Saint Vincent & the Grenadines
Ecuador* Suriname
El Salvador* Trinidad and Tobago
Grenada Turks and Caicos Islands
Guadeloupe Uruguay*
Guatemala* Venezuela*
Guyana

Western Europe

Andorra Liechtenstein*
Austria* Luxembourg*
Belgium* Malta*
Cyprus* Monaco*
Denmark* Netherlands*
Finland* Norway*
France* Portugal*
Germany* San Marino
Gibraltar Spain*
Greece* Svalbard and Jan Mayen Islands
Greenland Sweden*
Holy See* Switzerland*
Iceland* Turkey*
Ireland* United Kingdom*
Italy*

Eastern Europe

Albania*
Armenia*
Azerbaijan*
Belarus*
Bosnia and Herzegovina*
Bulgaria*
Croatia*
Czech Republic*
Estonia*
Georgia*
Hungary*
Kazakhstan*
Kyrgyzstan*
Latvia*
Lithuania*
Montenegro*
Poland*
Republic of Moldova*
Romania*
Russian Federation*
Serbia*
Slovakia*
Slovenia*
Tajikistan*
The Frm. Yug. Rep. of Macedonia*
Turkmenistan
Ukraine*
Uzbekistan*

Africa

Algeria*
Angola*
Benin*
Botswana*
Burkina Faso*
Burundi*
Cameroon*
Cape Verde
Central African Republic*
Chad*
Comoros
Congo*
Côte d'Ivoire*
Democratic Rep. of the Congo*
Djibouti
Egypt*
Equatorial Guinea
Eritrea*
Ethiopia*
Gabon*
Gambia
Ghana*
Guinea
Guinea-Bissau
Kenya*
Lesotho*
Liberia*
Libya*
Madagascar*
Malawi*
Mali*
Mauritania*
Mauritius*
Mayotte
Morocco*
Mozambique*
Namibia*
Niger*
Nigeria*
Reunion
Rwanda
Saint Helena
Sao Tome and Principe
Senegal*
Seychelles*
Sierra Leone*
Somalia
South Africa*
Sudan*
Swaziland
Togo
Tunisia*
Uganda*
United Republic of Tanzania*
Western Sahara
Zambia*
Zimbabwe*

Middle East and South Asia

Afghanistan*	Kuwait*
Bahrain*	Lebanon*
Bangladesh*	Nepal*
Bhutan	Oman*
British Indian Ocean Territory	Pakistan*
Cocos (Keeling) Islands	Qatar*
French Southern Territories	Saudi Arabia*
Heard Island & McDonald Islands	Sri Lanka*
India*	Syrian Arab Republic*
Iran, Islamic Republic of*	T.T.U.T.J of T. Palestinian A.
Iraq*	United Arab Emirates*
Israel*	Yemen*
Jordan*	

South East Asia and the Pacific

Australia*	Palau*
Brunei Darussalam	Papua New Guinea*
Cook Islands	Pitcairn Islands
Fiji	Samoa
Indonesia*	Singapore*
Kiribati	Solomon Islands
Malaysia*	Thailand*
Maldives	Timor Leste
Marshall Islands*	Tokelau
Micronesia (Fed. States of)	Tonga
Myanmar*	Tuvalu
New Zealand*	US Minor Outlying Islands
Niue	Vanuatu
Norfolk Islands	Wallis and Futuna Islands
Northern Mariana Islands	

Far East

Cambodia*	Macau, China
China*	Mongolia*
Dem. P.R. of Korea	Philippines*
Japan*	Taiwan, China
Korea, Republic of*	Vietnam*
Lao P.D.R.*	

TABLE 1. NUCLEAR POWER REACTORS IN THE WORLD (end of 2011)

Group and Country	In Operation		Long-term Shut Down Reactors		Under Construction		Electricity Supplied by Nuclear Power Reactors in 2011	
	Number of Units	Total MW(e)	Number of Units	Total MW(e)	Number of Units	Total MW(e)	TWh	Percent of Total Electricity
North America								
Canada	18	12604	4	2726	1	1165	88.3	15.3
United States of America	104	101465					790.4	19.3
Latin America								
Argentina	2	935			1	692	5.9	5.0
Brazil	2	1884			1	1245	14.8	3.2
Mexico	2	1300					9.3	3.6
Western Europe								
Belgium	7	5927					45.9	54.0
Finland	4	2736			1	1600	22.3	31.6
France	58	63130			1	1600	423.5	77.7
Germany	9	12068					102.3	17.8
Netherlands	1	482					3.9	3.6
Spain	8	7567					55.1	19.5
Sweden	10	9326					58.1	39.6
Switzerland	5	3263					25.7	40.9
United Kingdom	18	9953					62.7	17.8
Eastern Europe								
Armenia	1	375					2.4	33.2
Bulgaria	2	1906			2	1906	15.3	32.6
Czech Republic	6	3766					26.7	33.0
Hungary	4	1889					14.7	43.3

TABLE 1. NUCLEAR POWER REACTORS IN THE WORLD (end of 2011)

Group and Country	In Operation		Long-term Shut Down Reactors		Under Construction		Electricity Supplied by Nuclear Power Reactors in 2011	
	Number of Units	Total MW(e)	Number of Units	Total MW(e)	Number of Units	Total MW(e)	TWh	Percent of Total Electricity
Romania	2	1300			10	8188	10.8	19.0
Russian Federation	33	23643			2	782	162.0	17.6
Slovakia	4	1816			2	1900	14.3	54.0
Slovenia	1	688			2	1900	5.9	41.7
Ukraine	15	13107					84.9	47.2
Africa								
South Africa	2	1830					12.9	5.2
Middle East and South Asia								
India	20	4391			7	4824	29.0	3.7
Iran, Islamic Republic of	1	915			2	630	0.1	0.0
Pakistan	3	725					3.8	3.8
Far East								
China	16	11816			26	26620	82.6	1.9
Japan	50	44215	1	246	2	2650	156.2	18.1
Korea, Republic of	21	18751			5	5560	147.8	34.6
World Total (*)	435	368791	5	2972	65	61962	2518.0	12.3

Notes:

(*) Including the following data in Taiwan, China:

— 6 units in operation with total capacity of 5018 MW(e); 2 units under construction with total capacity of 2600 MW(e);

— 40.4 TWh of nuclear electricity generation, representing 19.0% of the total electricity generated.

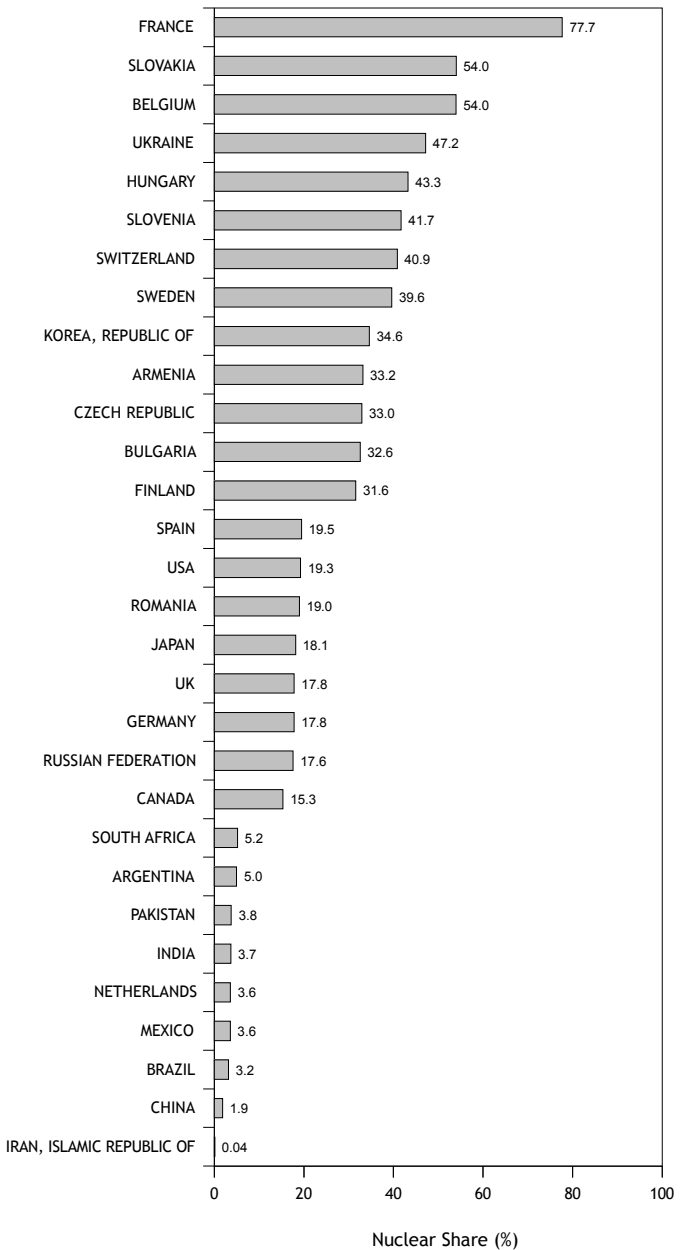


FIGURE 1. NUCLEAR SHARE OF TOTAL ELECTRICITY GENERATION IN 2011

Note: the nuclear share of electricity generation in Taiwan, China was 19.0%.

TABLE 2. NUMBER OF COUNTRIES WITH NUCLEAR POWER REACTORS IN OPERATION OR UNDER CONSTRUCTION (end of 2011)

Country Group	Number of Countries in Group	Countries with Nuclear Power Reactors				Total (2)
		In Operation	Long-term Shut Down	Under Construction (1)	Total (2)	
North America	2	2	1	1	2	
Latin America	45	3		2	3	
Western Europe	29	9		2	9	
Eastern Europe	27	9		4	9	
Africa	57	1			1	
Middle East and South Asia	25	3		2	3	
South East Asia and the Pacific	29					
Far East	11	3	1	3	3	
World Total	225	30	2	14	30	

Notes:

(1) May include countries having reactors already in operation.

(2) Total number of countries in each group that have nuclear power reactors in operation, or under construction.

TABLE 3. ESTIMATES OF TOTAL AND NUCLEAR ELECTRICAL GENERATING CAPACITY

Country Group	2011				2020 (a)				2030 (a)				2050 (a)(b)			
	Total Elect. GW(e)		Nuclear		Total Elect. GW(e)		Nuclear		Total Elect. GW(e)		Nuclear		Total Elect. GW(e)		Nuclear	
	GW(e)	%	GW(e)	%	GW(e)	%	GW(e)	%	GW(e)	%	GW(e)	%	GW(e)	%	GW(e)	%
North America	1180	9.7	114.1	9.7	1278	9.4	121	9.4	1351	111	8.2	1479	65	4.4	165	11.2
Latin America	330	1.2	4.1	1.2	463	1.0	4.8	1.0	997	7	0.7	1988	13	0.7	58	2.9
Western Europe	873	13.1	114.5	13.1	1025	9.1	93	9.1	1152	70	6.1	1609	55	3.4	154	9.5
Eastern Europe	460	10.5	48.5	10.5	631	10.3	65	10.3	690	80	11.5	984	79	8.1	140	14.2
Africa	134	1.4	1.8	1.4	354	0.5	1.8	0.5	722	5	0.7	2415	10	0.4	44	1.8
Middle East and South Asia	441	1.4	6.0	1.4	553	2.3	13	2.3	1454	30	2.1	5194	50	1.0	139	2.7
South East Asia and the Pacific	190				304				491	0.0	0.0	1283	5	0.4	20	1.6
Far East	1604	5.0	79.8	5.0	2200	5.6	123	5.6	2789	153	5.5	5140	191	3.7	417	8.1
World Total	5210	7.1	368.8	7.1	6808	6.2	421	6.2	9645	456	4.7	20092	469	2.3	1137	5.7
					7593	6.7	508	6.7	11889	740	6.2					

Notes:

- (a) Nuclear capacity estimates take into account the scheduled retirement of the older units at the end of their lifetime.
- (b) Projection figures for total electric generating capacities are the arithmetic average between low and high estimates.

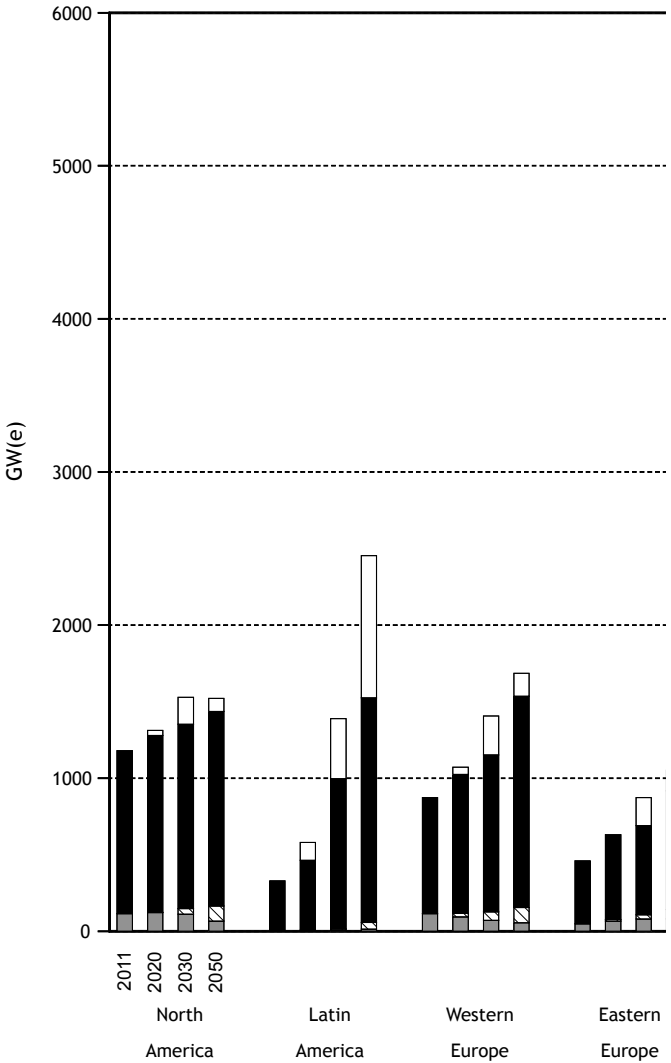


FIGURE 2. TOTAL AND NUCLEAR ELECTRICAL GENERATING CAPACITY

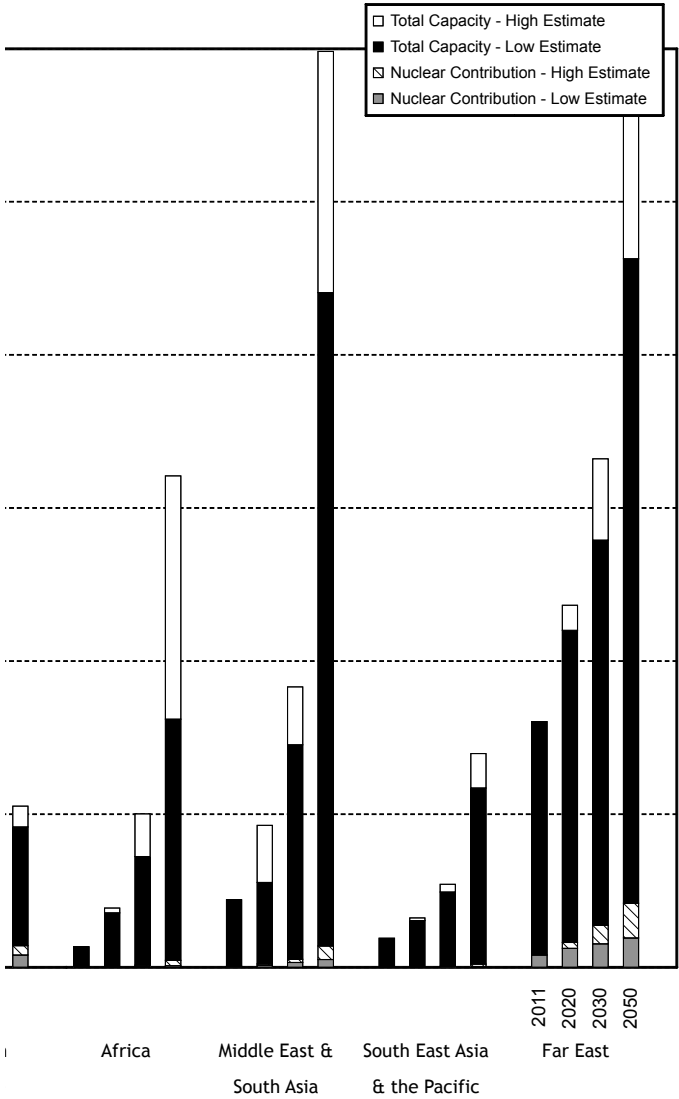


TABLE 4. ESTIMATES OF TOTAL ELECTRICITY GENERATION AND CONTRIBUTION BY NUCLEAR POWER (*)

Country Group	2011				2020				2030				2050 (a)					
	Total Elect. TWh		Nuclear		Total Elect. TWh		Nuclear		Total Elect. TWh		Nuclear		Total Elect. TWh		Nuclear			
	TWh	%	TWh	%	TWh	%	TWh	%	TWh	%	TWh	%	TWh	%	TWh	%		
North America	4682	878.8	18.8	4978	951	19.1	5221	871	16.7	5762	525	9.1	5221	871	16.7	5762	525	9.1
				5011	973	19.4	5336	1163	21.8		1330	23.1					1330	23.1
Latin America	1352	30.0	2.2	2066	36	1.7	3443	56	1.6	7249	107	1.5	3443	56	1.6	7249	107	1.5
				2263	45	2.0	5118	114	2.2		464	6.4					464	6.4
Western Europe	3116	799.5	25.7	3564	696	19.5	4042	554	13.7	5873	442	7.5	4042	554	13.7	5873	442	7.5
				3733	868	23.3	4788	993	20.7		1238	21.1					1238	21.1
Eastern Europe	1806	337.0	18.7	2190	482	22.0	2587	628	24.3	3737	641	17.1	2587	628	24.3	3737	641	17.1
				2271	569	25.1	3129	847	27.1		1127	30.2					1127	30.2
Africa	651	12.9	2.0	1210	14	1.1	2366	40	1.7	8707	82	0.9	2366	40	1.7	8707	82	0.9
				1426	14	1.0	3340	106	3.2		358	4.1					358	4.1
Middle East and South Asia	1841	32.9	1.8	2425	91	3.8	5342	238	4.5	19212	401	2.1	5342	238	4.5	19212	401	2.1
				3115	152	4.9	6433	409	6.4		1122	5.8					1122	5.8
South East Asia and the Pacific	794			1051			1672	0	0.0	4417	40	0.9	1672	0	0.0	4417	40	0.9
				1096			1933	47	2.4		161	3.6					161	3.6
Far East	6200	426.9	6.9	7407	913	12.3	9766	1207	12.4	19923	1542	7.7	9766	1207	12.4	19923	1542	7.7
				8615	1207	14.0	12731	2157	16.9		3363	16.9					3363	16.9
World Total	20442	2518.0	12.3	24891	3183	12.8	34440	3595	10.4	74880	3780	5.0	34440	3595	10.4	74880	3780	5.0
Low Estimate				27530	3829	13.9	42808	5837	13.6		9163	12.2					9163	12.2
High Estimate																		

Notes:

(*) The nuclear generation data presented in this table and the nuclear capacity data presented in Table 3 cannot be used to calculate average annual capacity factors for nuclear plants, as Table 3 presents year-end capacity and not the effective capacity average over the year.

(a) Projection figures for total electricity generation are the arithmetic average between low and high estimates.

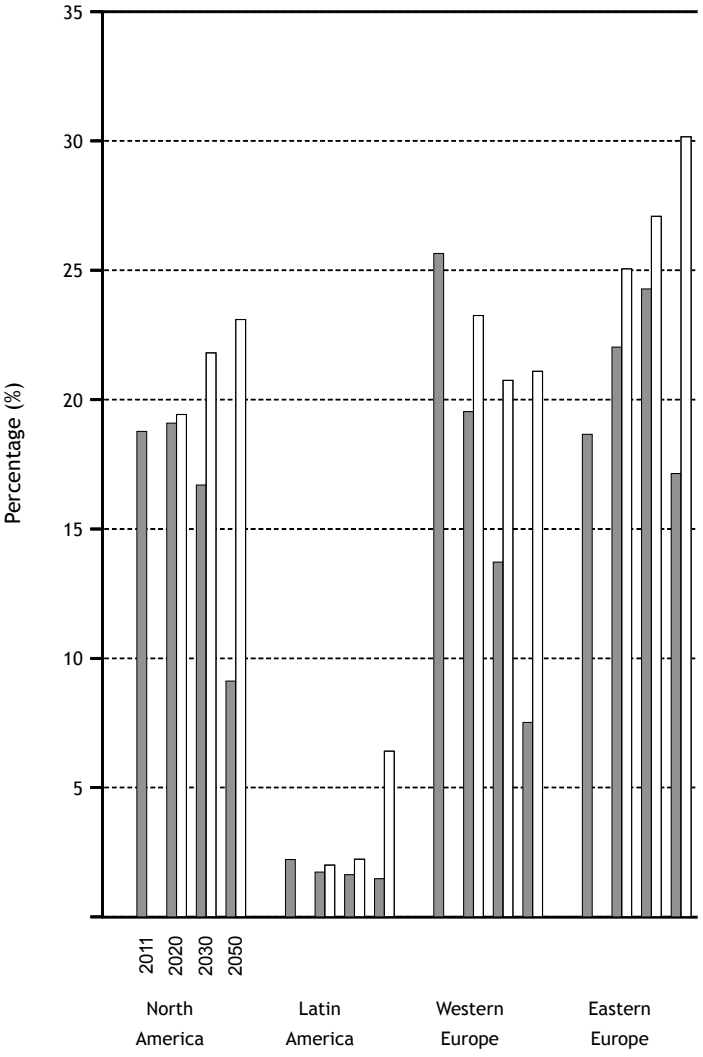
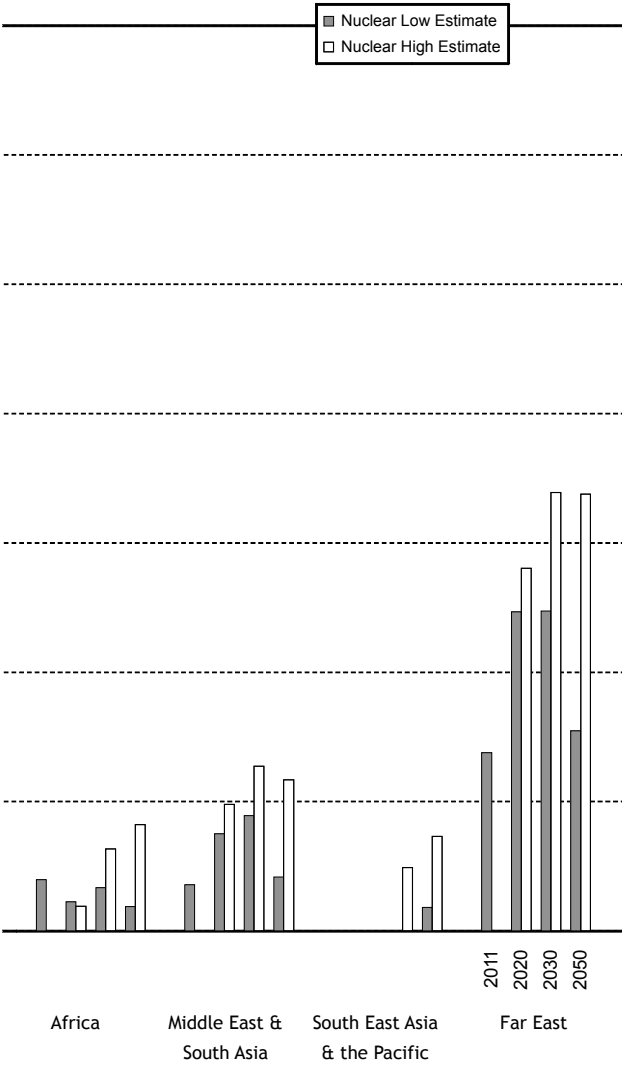


FIGURE 3. PERCENTAGE OF ELECTRICITY SUPPLIED BY NUCLEAR



POWER

TABLE 5. ESTIMATES OF TOTAL ENERGY REQUIREMENT (EJ), PERCENTAGE USED FOR ELECTRICITY GENERATION, AND PERCENTAGE SUPPLIED BY NUCLEAR ENERGY (*)

Country Group	2011			2020			2030			2050 (a)		
	Total Energy Requirement	% Used for Elect. Gen.	% Supplied by Nuclear	Total Energy Requirement	% Used for Elect. Gen.	% Supplied by Nuclear	Total Energy Requirement	% Used for Elect. Gen.	% Supplied by Nuclear	Total Energy Requirement	% Used for Elect. Gen.	% Supplied by Nuclear
North America	107.1	40.5	9.0	107	43	9.7	106	45	9.0	107	49	5.5 13.1
Latin America	35.4	25.3	0.9	51	27	0.8	64	35	1.0	111	43	1.3 3.9
Western Europe	66.3	38.4	13.2	73	39	10.5	82	38	7.4	96	47	5.4 13.2
Eastern Europe	58.7	38.2	6.3	65	41	8.1	67	47	10.2	93	50	8.2 12.2
Africa	30.3	21.7	0.5	35	35	0.4	54	44	0.8	198	44	0.7 1.5
Middle East and South Asia	72.1	33.3	0.5	93	34	1.1	157	44	1.7	489	51	1.0 2.2
South East Asia and the Pacific	26.3	31.2		30	36		41	42	0.0	101	45	0.5 1.6
Far East	143.9	41.8	3.2	177	41	5.6	225	43	5.9	389	50	4.9 8.4
World Total	539.9	36.9	5.1	631	38	5.5	796	43	4.9	1584	49	2.9 5.7
Low Estimate				688	39	6.1	980	43	6.5			
High Estimate												

Notes:

(*) Total energy requirement is estimated as production of primary energy plus net trade (import - export) minus international bunkers and stock changes.

(a) Projection figures for total energy requirement and percentage used for electricity generation are the arithmetic average between low and high estimates.

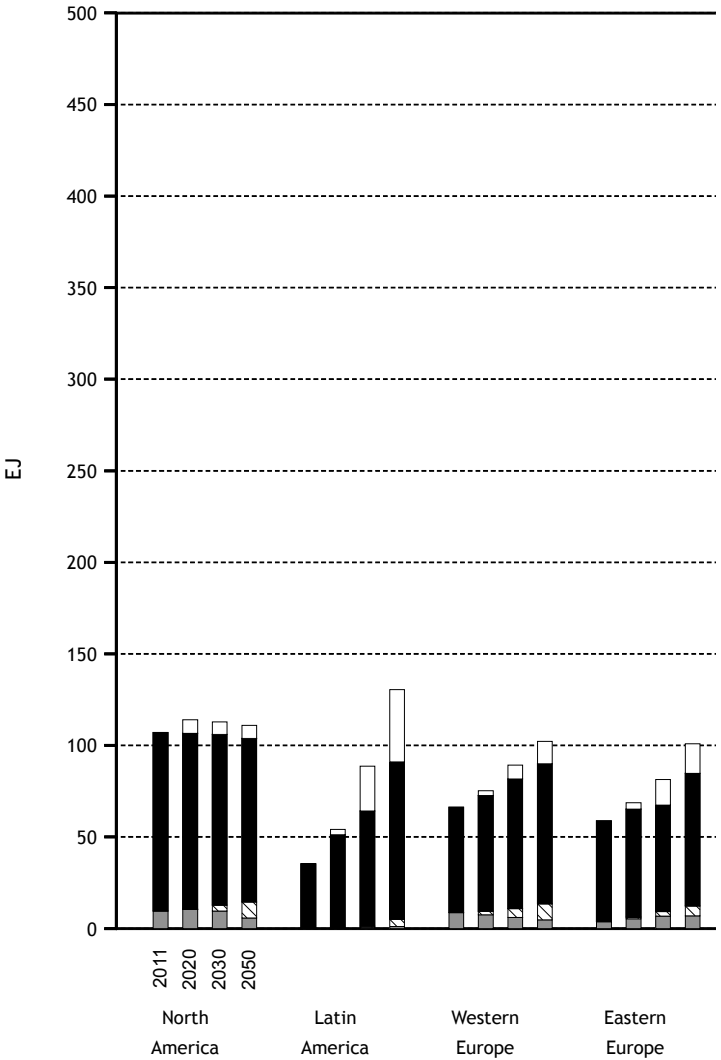


FIGURE 4. ESTIMATES OF ENERGY REQUIREMENT

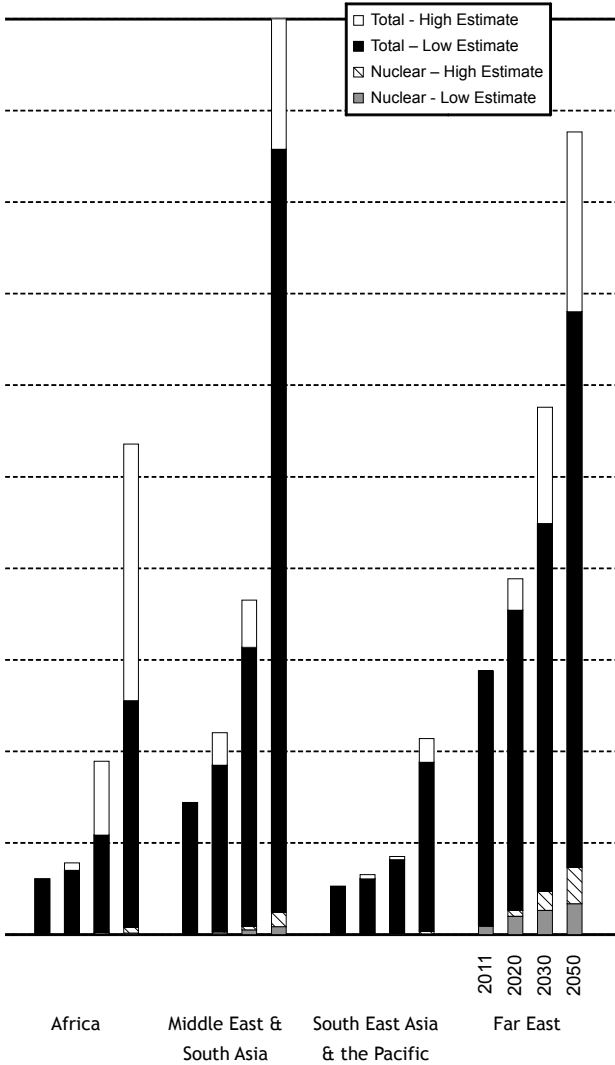


TABLE 6. TOTAL ENERGY REQUIREMENT (EJ) BY TYPE OF FUEL IN 2011 (*)

Country Group	Solids (a)	Liquids	Gases	Biomass (b)	Hydro	Nuclear	Renewables (c)	Total
North America	21.43	35.66	30.69	6.07	2.62	9.59	0.99	107.06
Latin America	1.66	16.01	8.54	5.64	2.79	0.33	0.38	35.35
Western Europe	9.05	22.25	18.43	4.76	1.88	8.72	1.16	66.25
Eastern Europe	12.01	12.18	28.53	1.36	1.01	3.68	-0.03	58.74
Africa	4.85	8.11	4.34	12.38	0.39	0.14	0.11	30.31
Middle East and South Asia	17.63	23.83	19.76	9.76	0.72	0.36	0.02	72.08
South East Asia and the Pacific	6.16	9.09	6.10	4.24	0.26		0.42	26.27
Far East	84.05	34.52	12.72	4.12	3.11	4.66	0.70	143.89
World Total	156.83	161.66	129.11	48.34	12.79	27.47	3.75	539.94

Notes:

(*) Total energy requirement is estimated as production of primary energy plus net trade (import - export) minus international bunkers and stock changes.

(a) Solids do not include commercial wood.

(b) The column headed 'Biomass' includes commercial wood, combustible renewables, waste and other biomass products.

(c) The column headed 'Renewables' includes geothermal, wind, solar, tide energy and net electricity trade.

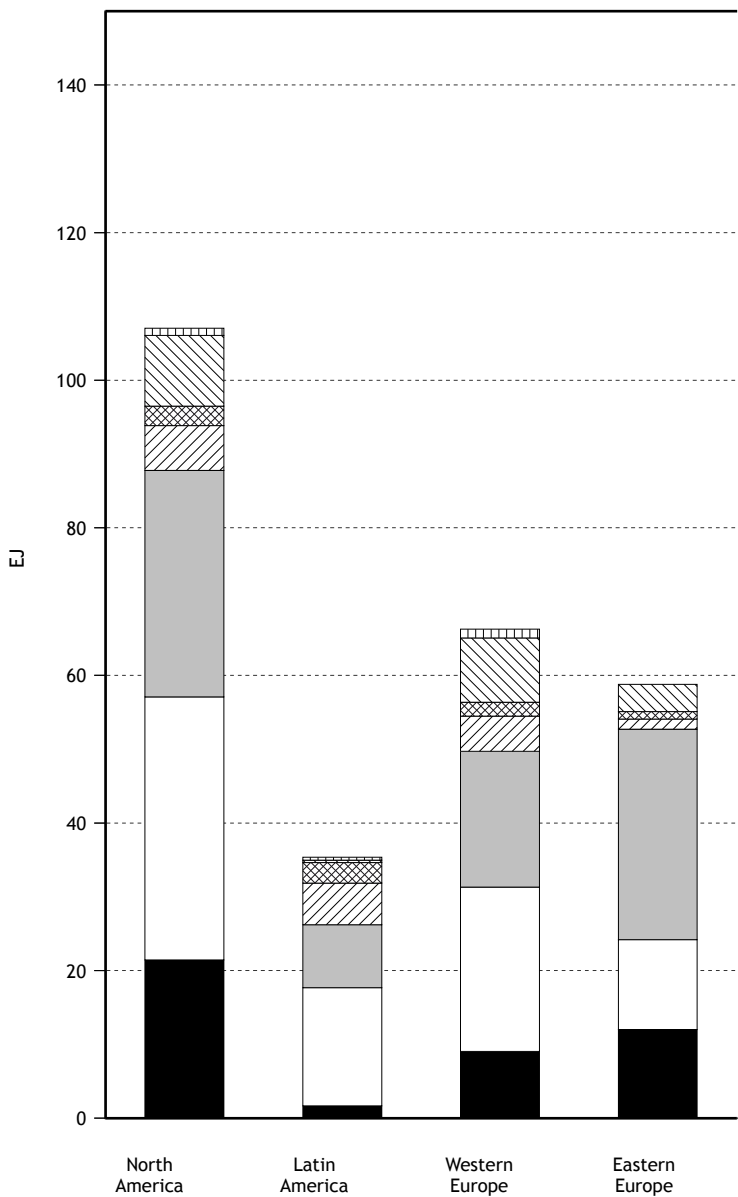
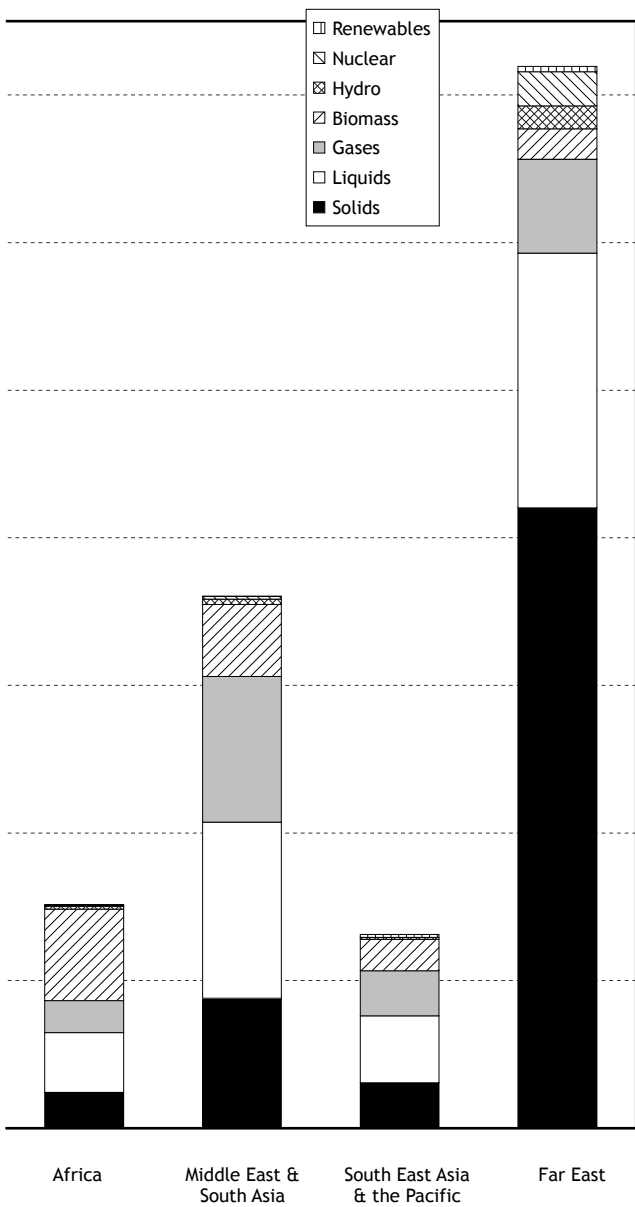


FIGURE 5. TOTAL ENERGY REQUIREMENT BY FUEL TYPE IN 2011



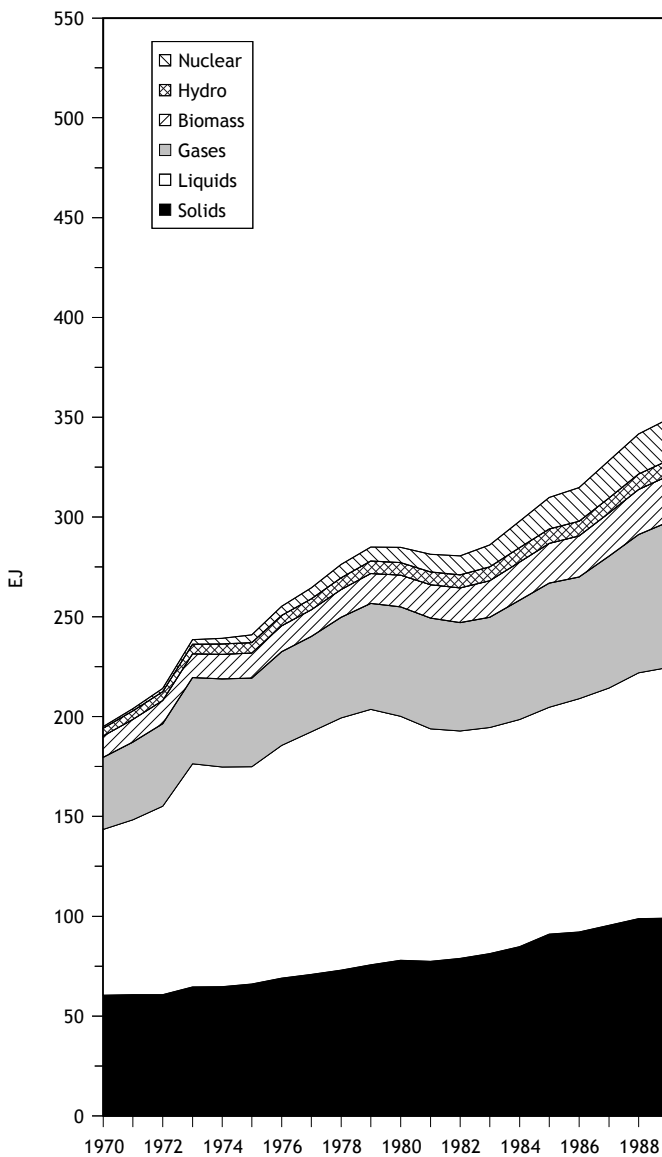
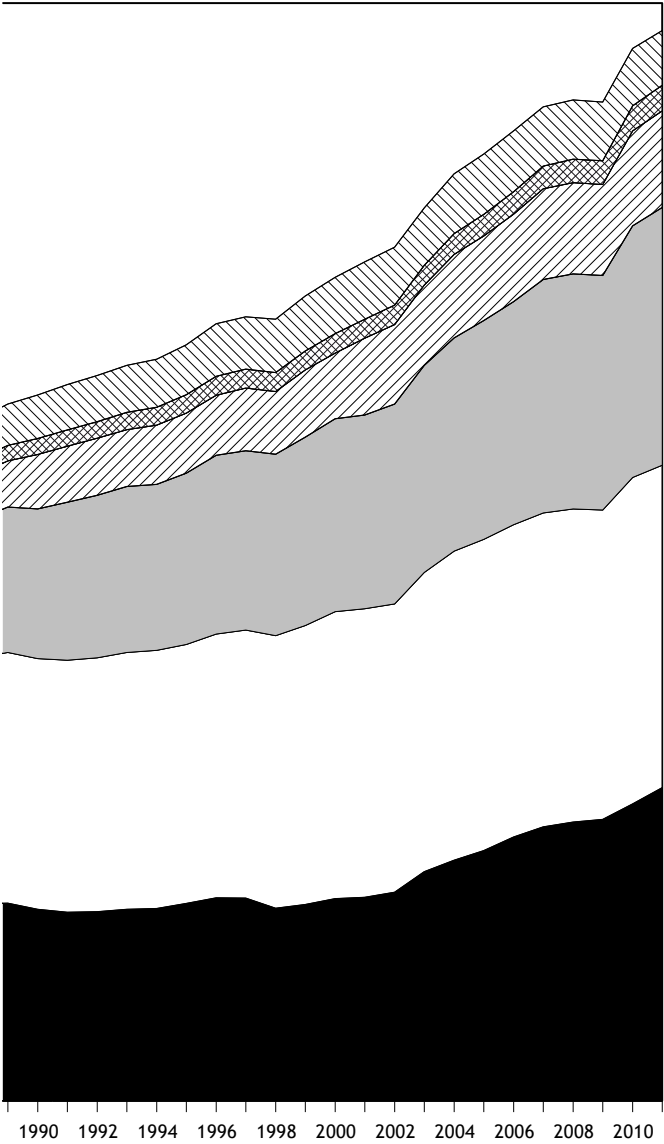


FIGURE 6. BREAKDOWN OF WORLD TOTAL ENERGY REQUIREMENT DURING THE PERIOD 1970 – 2011



Year

TABLE 7. FUEL SHARES (%) OF ENERGY REQUIREMENT IN 2011 (*)

Country Group	Solids (a)	Liquids	Gases	Biomass (b)	Hydro	Nuclear	Renewables (c)	Total
North America	20.02	33.31	28.67	5.67	2.45	8.95	0.93	100.00
Latin America	4.69	45.30	24.15	15.97	7.90	0.93	1.08	100.00
Western Europe	13.66	33.58	27.82	7.19	2.84	13.17	1.75	100.00
Eastern Europe	20.45	20.73	48.58	2.31	1.72	6.26	-0.06	100.00
Africa	15.99	26.74	14.31	40.85	1.28	0.47	0.36	100.00
Middle East and South Asia	24.46	33.07	27.42	13.53	1.00	0.50	0.03	100.00
South East Asia and the Pacific	23.45	34.60	23.21	16.15	1.01		1.58	100.00
Far East	58.42	23.99	8.84	2.86	2.16	3.24	0.49	100.00
World Total	29.05	29.94	23.91	8.95	2.37	5.09	0.69	100.00

Notes:

(*) Total energy requirement is estimated as production of primary energy plus net trade (import - export) minus international bunkers and stock changes.

(a) Solids do not include commercial wood.

(b) The column headed 'Biomass' includes commercial wood, combustible renewables, waste and other biomass products.

(c) The column headed 'Renewables' includes geothermal, wind, solar, tide energy and net electricity trade.

TABLE 8. FUEL USE (EJ) FOR ELECTRICITY GENERATION BY TYPE OF FUEL IN 2011

Country Group	Thermal (a)	Hydro	Nuclear	Renewables (b)	Total
North America	30.19	2.62	9.59	0.99	43.39
Latin America	5.50	2.79	0.33	0.37	8.99
Western Europe	14.36	1.88	8.72	1.13	26.09
Eastern Europe	17.79	1.01	3.68	0.03	22.50
Africa	6.05	0.39	0.14	0.06	6.64
Middle East and South Asia	22.91	0.72	0.36	> 0.01	23.99
South East Asia and the Pacific	7.52	0.26		0.41	8.20
Far East	48.56	3.11	4.66	0.70	57.02
World Total	152.87	12.79	27.47	3.69	196.83

Notes:

(a) The column headed 'Thermal' is the total for solids, liquids, gases, biomass and waste.

(b) The column headed 'Renewables' includes geothermal, wind, solar and tide energy.

TABLE 9. PERCENTAGE CONTRIBUTION OF EACH FUEL TYPE TO ELECTRICITY GENERATION IN 2011

Country Group	Thermal (a)	Hydro	Nuclear	Renewables (b)	Total
North America	63.09	15.56	18.77	2.58	100.00
Latin America	39.51	57.39	2.22	0.88	100.00
Western Europe	51.27	16.78	25.66	6.29	100.00
Eastern Europe	65.60	15.52	18.66	0.22	100.00
Africa	80.93	16.54	1.99	0.54	100.00
Middle East and South Asia	87.32	10.87	1.79	0.02	100.00
South East Asia and the Pacific	88.43	9.25		2.31	100.00
Far East	78.03	13.94	6.89	1.14	100.00
World Total	68.22	17.38	12.32	2.08	100.00

Notes:

(a) The column headed 'Thermal' is the total for solids, liquids, gases, biomass and waste.

(b) The column headed 'Renewables' includes geothermal, wind, solar and tide energy.

TABLE 10. ESTIMATES OF POPULATION GROWTH BY REGION (*)

Country Group	2011		2020		2030		2050	
	Million Inhabitants	Growth Rate (%/a) 2000 – 2011	Million Inhabitants	Growth Rate (%/a) 2011 – 2020	Million Inhabitants	Growth Rate (%/a) 2020 – 2030	Million Inhabitants	Growth Rate (%/a) 2030 – 2050
North America	349	0.89	374	0.79	402	0.71	447	0.53
Latin America	599	1.16	652	0.96	702	0.73	751	0.34
Western Europe	488	0.50	504	0.36	515	0.21	520	0.05
Eastern Europe	391	-0.35	389	-0.06	381	-0.21	356	-0.34
Africa	1058	2.54	1278	2.13	1562	2.03	2192	1.71
Middle East and South Asia	1883	1.86	2119	1.32	2357	1.07	2679	0.64
South East Asia and the Pacific	448	1.39	488	0.96	526	0.75	564	0.35
Far East	1786	0.59	1852	0.40	1878	0.14	1798	-0.22
World Total	7001	1.35	7657	1.00	8321	0.84	9306	0.56

(*) Projection figures are the arithmetic average between low and high estimates.

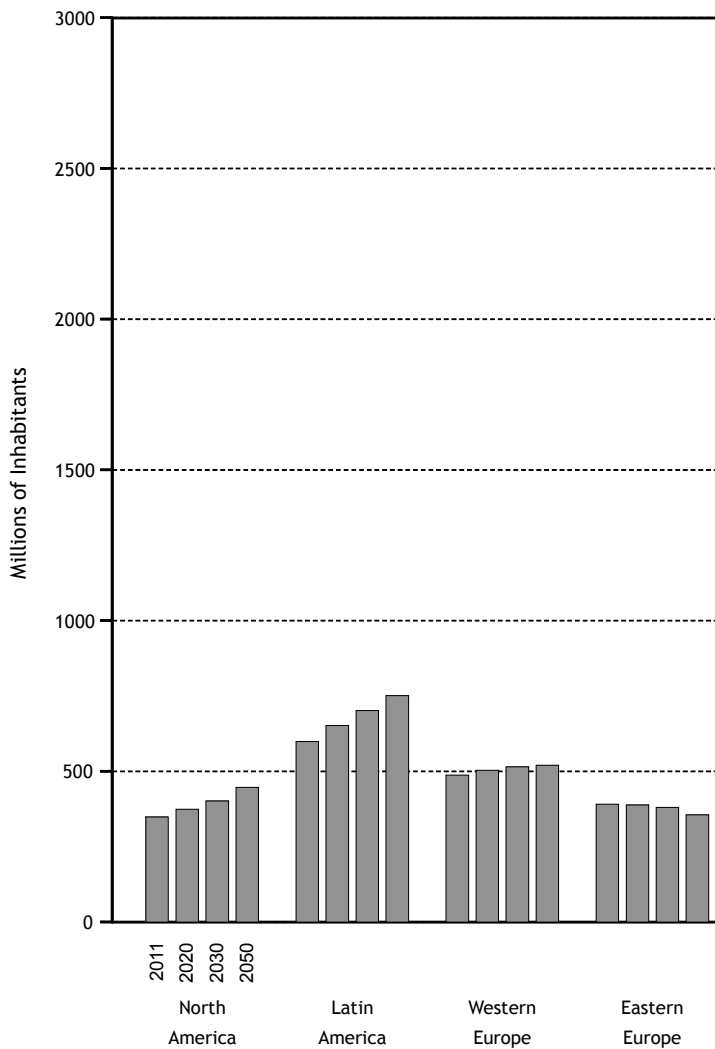


FIGURE 7. POPULATION ESTIMATES

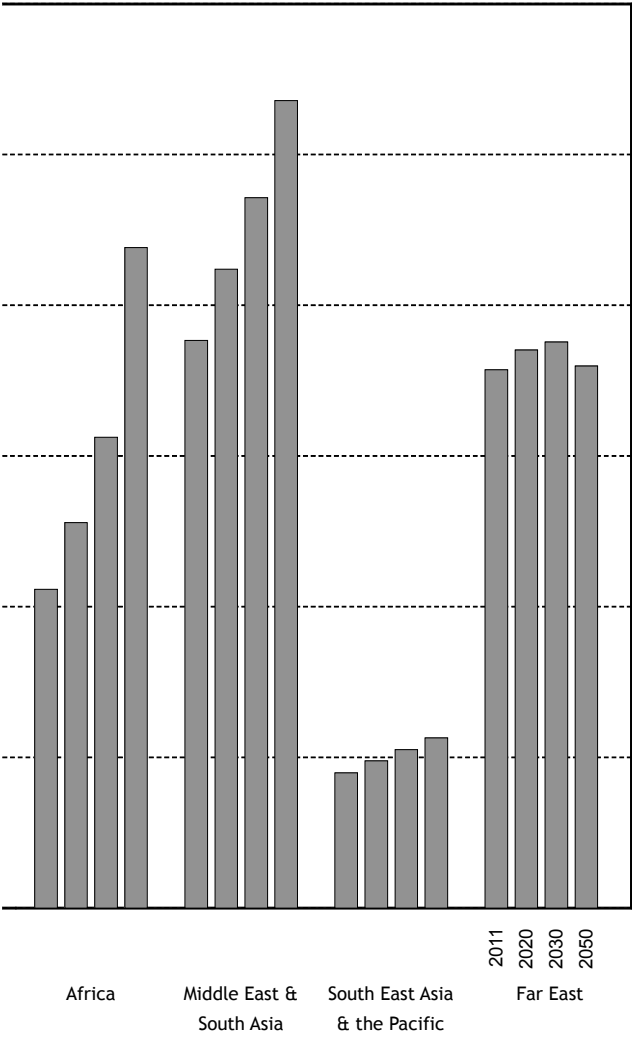


TABLE 11. ESTIMATES OF TOTAL ENERGY AND ELECTRICITY REQUIREMENT PER CAPITA

Country Group	2011		2020		2030		2050 (*)	
	Energy Requirement per Capita (GJ/cap)	Electricity Requirement per Capita (MWh/cap)	Energy Requirement per Capita (GJ/cap)	Electricity Requirement per Capita (MWh/cap)	Energy Requirement per Capita (GJ/cap)	Electricity Requirement per Capita (MWh/cap)	Energy Requirement per Capita (GJ/cap)	Electricity Requirement per Capita (MWh/cap)
North America	307	13.4	285	13.3	264	13.0	240	12.9 ± 0.3
Latin America	59	2.3	78	3.2	91	4.9	148	9.7 ± 2.1
Western Europe	136	6.4	144	7.1	159	7.9	185	11.3 ± 1.1
Eastern Europe	150	4.6	168	5.6	177	6.8	261	10.5 ± 1.2
Africa	29	0.6	27	0.9	35	1.5	90	4.0 ± 1.5
Middle East and South Asia	38	1.0	44	1.1	67	2.3	183	7.2 ± 0.9
South East Asia and the Pacific	59	1.8	62	2.2	78	3.2	178	7.8 ± 0.9
Far East	81	3.5	96	4.0	120	5.2	216	11.1 ± 1.6
World Average	77	2.9	82	3.3	96	4.1	170	8.0 ± 1.3

Note:

(*) Projection figures are the arithmetic average between low and high estimates with indicated range.

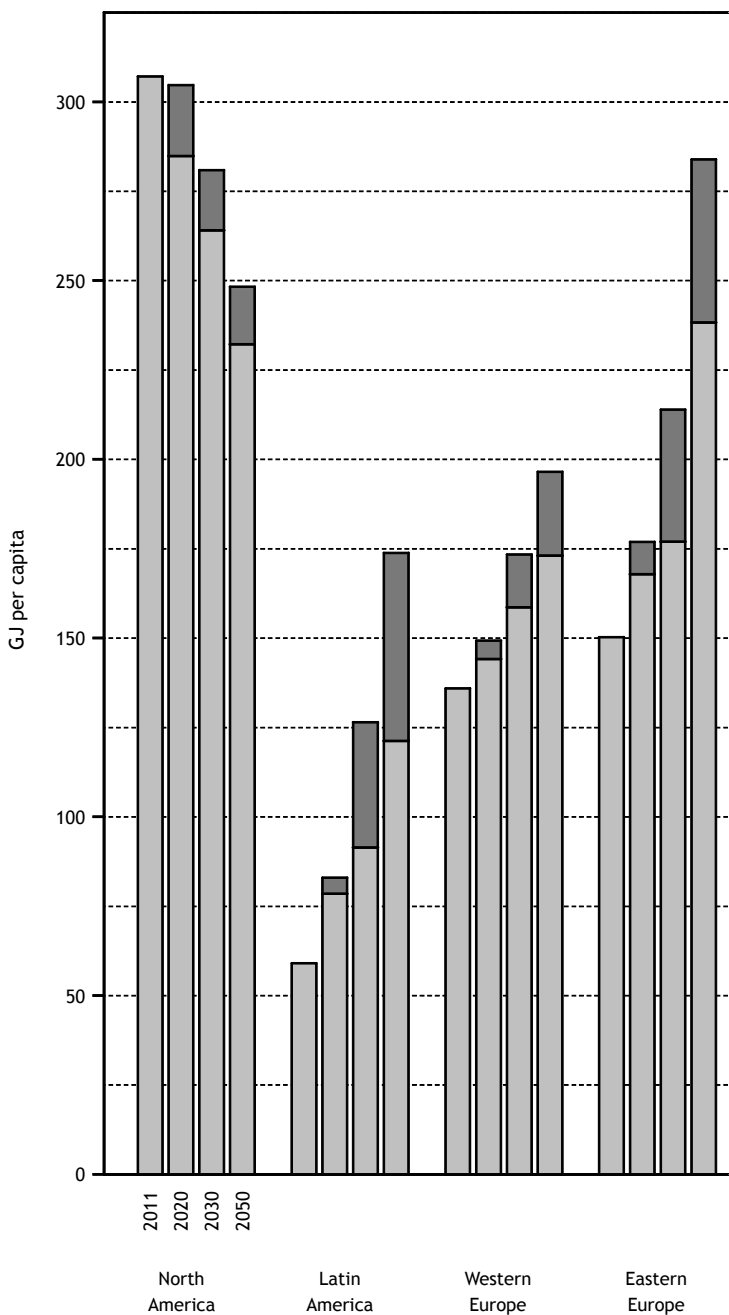
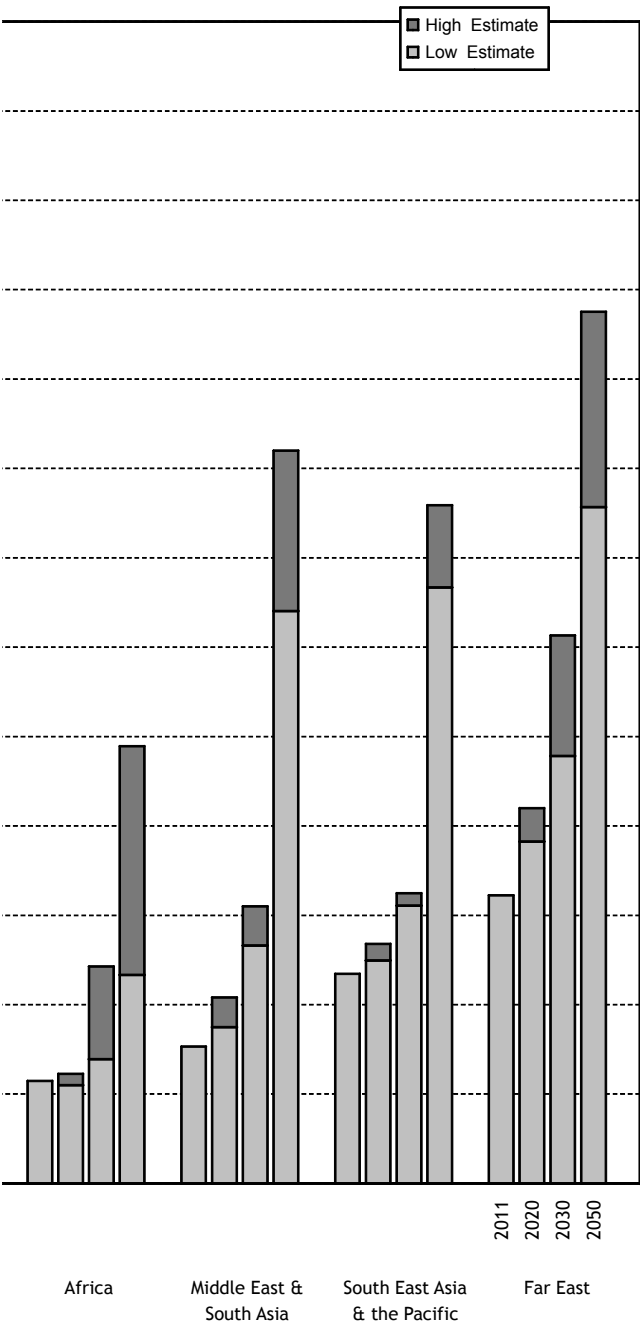


FIGURE 8. TOTAL ENERGY REQUIREMENT PER CAPITA



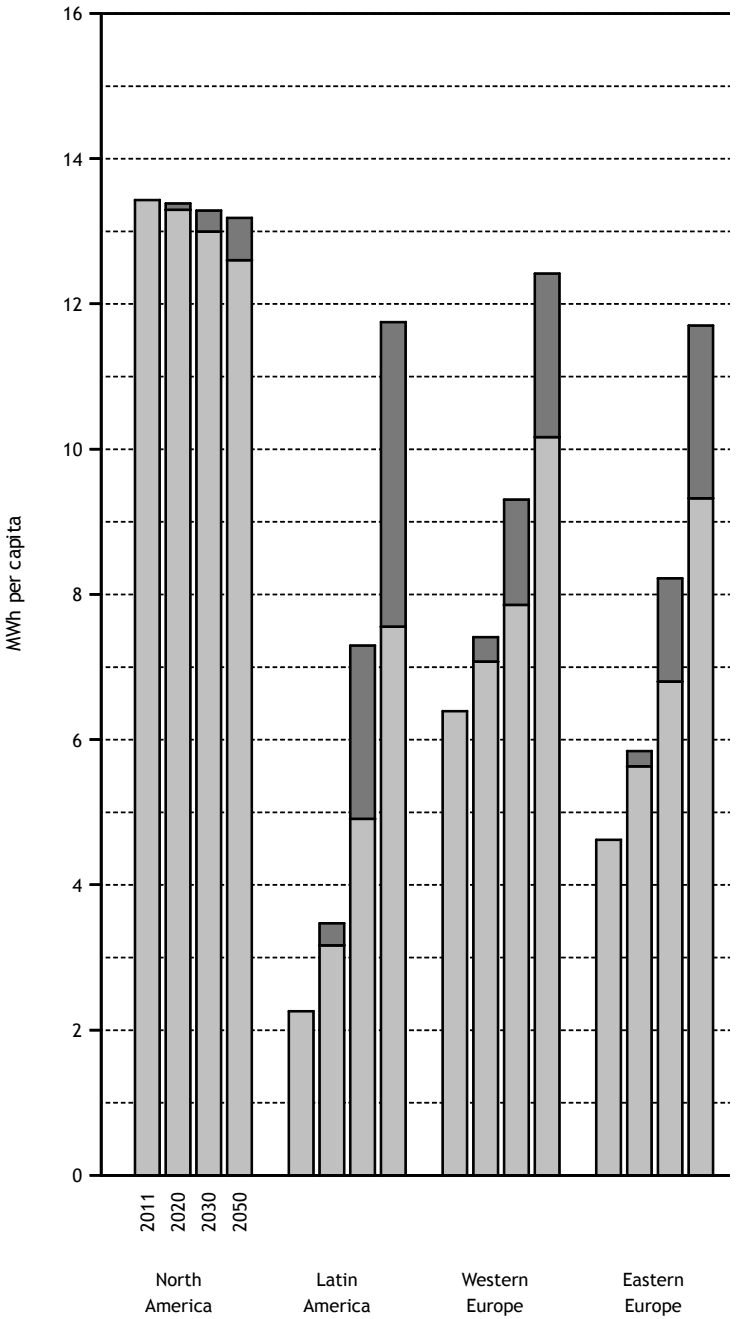


FIGURE 9. TOTAL ELECTRICITY REQUIREMENT PER CAPITA

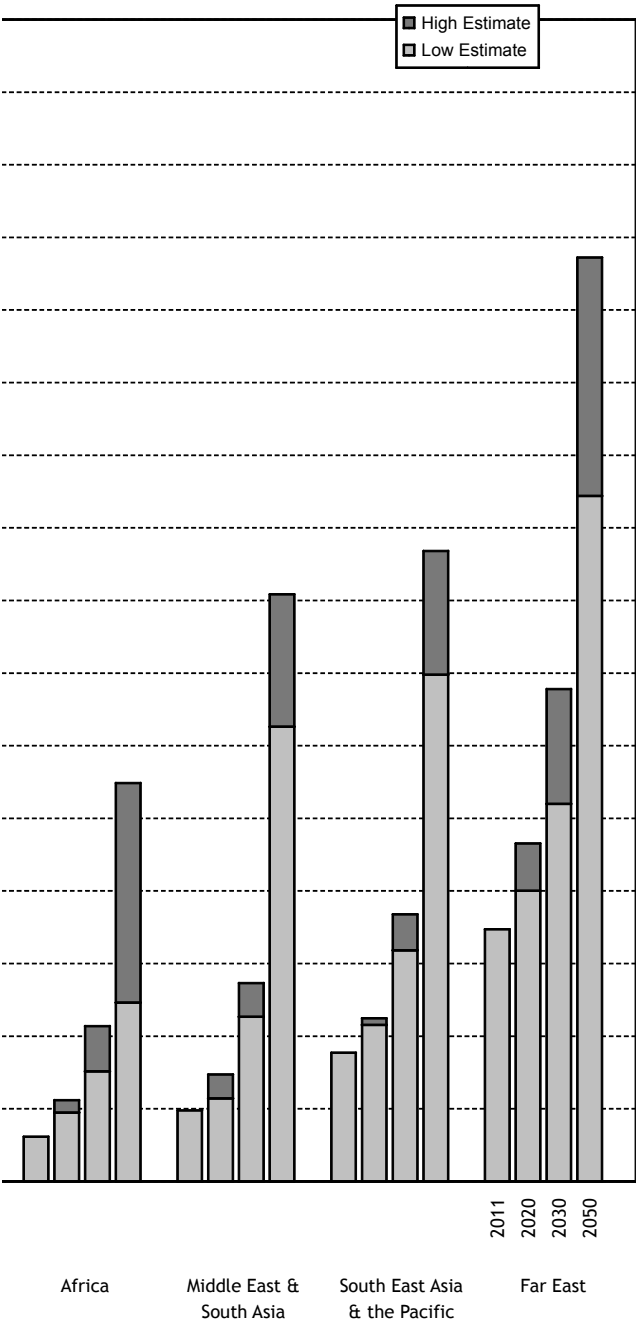


TABLE 12. AVERAGE ANNUAL GROWTH RATES DURING THE PERIOD 2001–2011 (%)

Country Group	Population	Total Energy	Total Electricity	Nuclear Energy	Nuclear Capacity
North America	1.0	0.1	0.8	0.4	0.6
Latin America	1.3	2.7	3.4	0.3	-0.2
Western Europe	0.6	-0.3	0.8	-0.9	-0.9
Eastern Europe	-0.4	0.9	1.0	1.7	0.5
Africa	2.8	3.4	4.2	-0.3	0.0
Middle East and South Asia	2.0	5.0	5.3	5.5	7.5
South East Asia and the Pacific	1.5	3.0	3.5		
Far East	0.6	5.8	7.6	-1.3	2.2
World Average	1.4	2.5	3.3	-0.1	0.4

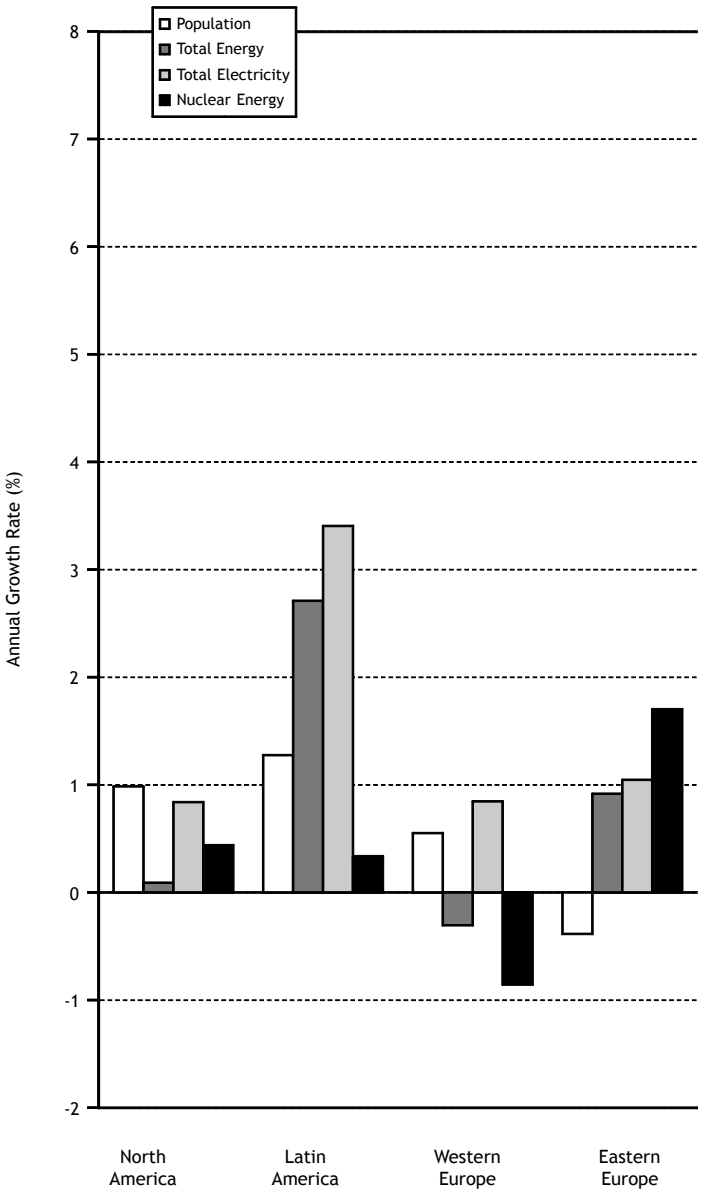


FIGURE 10. AVERAGE ANNUAL GROWTH RATES DURING THE PERIOD 2001–2011

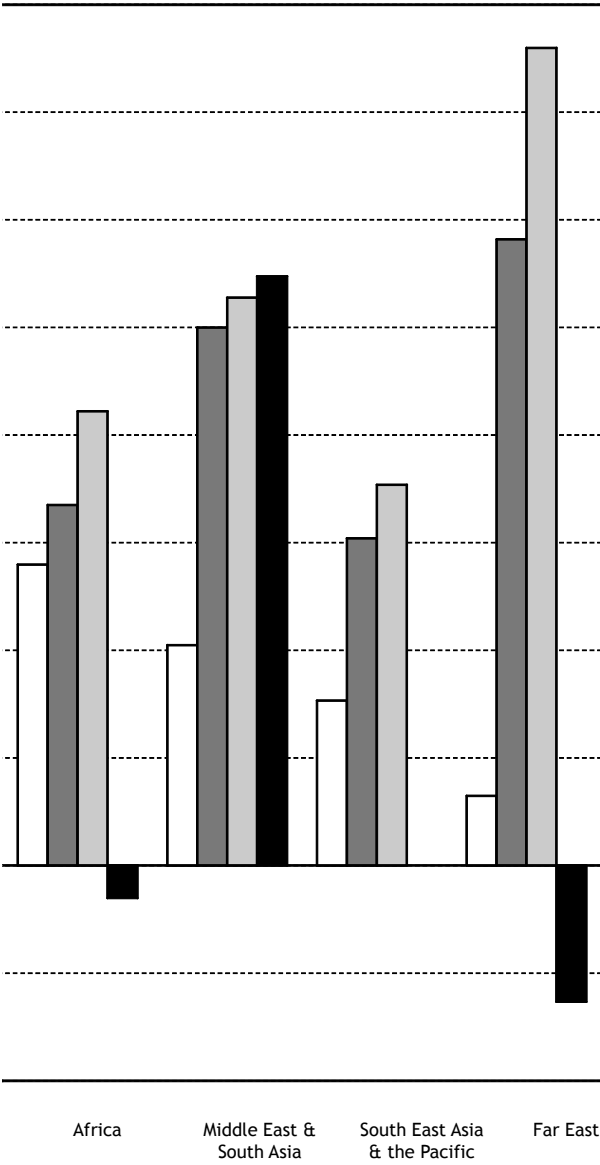


TABLE 13. ESTIMATES OF AVERAGE ANNUAL GROWTH RATES DURING THE PERIOD 2011–2030 (%)

Country Group	Population	Total Energy	Total Electricity	Nuclear Energy	Nuclear Capacity
North America	0.7	0.0 – 0.3	0.6 – 0.7	0.0 – 1.5	-0.2 – 1.4
Latin America	0.8	3.2 – 5.0	5.0 – 7.3	3.3 – 7.3	2.9 – 6.8
Western Europe	0.3	1.1 – 1.6	1.4 – 2.3	-1.9 – 1.1	-2.5 – 0.5
Eastern Europe	-0.1	0.7 – 1.7	1.9 – 2.9	3.3 – 5.0	2.6 – 4.3
Africa	2.1	3.1 – 6.2	7.0 – 9.0	6.1 – 11.7	5.5 – 11.1
Middle East and South Asia	1.2	4.2 – 5.0	5.8 – 6.8	11.0 – 14.2	8.8 – 12.0
South East Asia and the Pacific	0.8	2.4 – 2.6	4.0 – 4.8		
Far East	0.3	2.4 – 3.7	2.4 – 3.9	5.6 – 8.9	3.5 – 6.7
World Average	0.9	2.1 – 3.2	2.8 – 4.0	1.9 – 4.5	1.1 – 3.7



IAEA

International Atomic Energy Agency

No. 22

Where to order IAEA publications

In the following countries IAEA publications may be purchased from the sources listed below, or from major local booksellers. Payment may be made in local currency or with UNESCO coupons.

AUSTRALIA

DA Information Services, 648 Whitehorse Road, MITCHAM 3132

Telephone: +61 3 9210 7777 • Fax: +61 3 9210 7788

Email: service@dadirect.com.au • Web site: <http://www.dadirect.com.au>

BELGIUM

Jean de Lannoy, avenue du Roi 202, B-1190 Brussels

Telephone: +32 2 538 43 08 • Fax: +32 2 538 08 41

Email: jean.de.lannoy@infoboard.be • Web site: <http://www.jean-de-lannoy.be>

CANADA

Bernan Associates, 4501 Forbes Blvd, Suite 200, Lanham, MD 20706-4346, USA

Telephone: 1-800-865-3457 • Fax: 1-800-865-3450

Email: customercare@bernan.com • Web site: <http://www.bernan.com>

Renouf Publishing Company Ltd., 1-5369 Canotek Rd., Ottawa, Ontario, K1J 9J3

Telephone: +613 745 2665 • Fax: +613 745 7660

Email: order.dept@renoufbooks.com • Web site: <http://www.renoufbooks.com>

CHINA

IAEA Publications in Chinese: China Nuclear Energy Industry Corporation, Translation Section, P.O. Box 2103, Beijing

CZECH REPUBLIC

Suweco CZ, S.R.O., Klecakova 347, 180 21 Praha 9

Telephone: +420 26603 5364 • Fax: +420 28482 1646

Email: nakup@suweco.cz • Web site: <http://www.suweco.cz>

FINLAND

Akateeminen Kirjakauppa, PO BOX 128 (Keskuskatu 1), FIN-00101 Helsinki

Telephone: +358 9 121 41 • Fax: +358 9 121 4450

Email: akatilauk@akateeminen.com • Web site: <http://www.akateeminen.com>

FRANCE

Form-Edit, 5, rue Janssen, P.O. Box 25, F-75921 Paris Cedex 19

Telephone: +33 1 42 01 49 49 • Fax: +33 1 42 01 90 90

Email: formedit@formedit.fr • Web site: <http://www.formedit.fr>

Lavoisier SAS, 145 rue de Provigny, 94236 Cachan Cedex

Telephone: + 33 1 47 40 67 02 • Fax +33 1 47 40 67 02

Email: romuald.verrier@lavoisier.fr • Web site: <http://www.lavoisier.fr>

GERMANY

UNO-Verlag, Vertriebs- und Verlags GmbH, Am Hofgarten 10, D-53113 Bonn

Telephone: + 49 228 94 90 20 • Fax: +49 228 94 90 20 or +49 228 94 90 222

Email: bestellung@uno-verlag.de • Web site: <http://www.uno-verlag.de>

HUNGARY

Librotrade Ltd., Book Import, P.O. Box 126, H-1656 Budapest

Telephone: +36 1 257 7777 • Fax: +36 1 257 7472 • Email: books@librotrade.hu

INDIA

Allied Publishers Group, 1st Floor, Dubash House, 15, J. N. Heredia Marg, Ballard Estate, Mumbai 400 001,

Telephone: +91 22 22617926/27 • Fax: +91 22 22617928

Email: alliedpl@vsnl.com • Web site: <http://www.alliedpublishers.com>

Bookwell, 2/72, Nirankari Colony, Delhi 110009

Telephone: +91 11 23268786, +91 11 23257264 • Fax: +91 11 23281315

Email: bookwell@vsnl.net

ITALY

Libreria Scientifica Dott. Lucio di Biasio "AEIOU", Via Coronelli 6, I-20146 Milan

Telephone: +39 02 48 95 45 52 or 48 95 45 62 • Fax: +39 02 48 95 45 48

Email: info@libreriaaeiou.eu • Website: www.libreriaaeiou.eu

JAPAN

Maruzen Company, Ltd., 13-6 Nihonbashi, 3 chome, Chuo-ku, Tokyo 103-0027
Telephone: +81 3 3275 8582 • Fax: +81 3 3275 9072
Email: journal@maruzen.co.jp • Web site: <http://www.maruzen.co.jp>

REPUBLIC OF KOREA

KINS Inc., Information Business Dept. Samho Bldg. 2nd Floor, 275-1 Yang Jae-dong SeoCho-G, Seoul 137-130
Telephone: +02 589 1740 • Fax: +02 589 1746 • Web site: <http://www.kins.re.kr>

NETHERLANDS

De Lindeboom Internationale Publicaties B.V., M.A. de Ruyterstraat 20A, NL-7482 BZ Haaksbergen
Telephone: +31 (0) 53 5740004 • Fax: +31 (0) 53 5729296
Email: books@delindeboom.com • Web site: <http://www.delindeboom.com>

Martinus Nijhoff International, Koraaalrood 50, P.O. Box 1853, 2700 CZ Zoetermeer
Telephone: +31 793 684 400 • Fax: +31 793 615 698
Email: info@nijhoff.nl • Web site: <http://www.nijhoff.nl>

Swets and Zeitlinger b.v., P.O. Box 830, 2160 SZ Lisse
Telephone: +31 252 435 111 • Fax: +31 252 415 888
Email: info@swets.nl • Web site: <http://www.swets.nl>

NEW ZEALAND

DA Information Services, 648 Whitehorse Road, MITCHAM 3132, Australia
Telephone: +61 3 9210 7777 • Fax: +61 3 9210 7788
Email: service@dadirect.com.au • Web site: <http://www.dadirect.com.au>

SLOVENIA

Cankarjeva Zalozba d.d., Kopitarjeva 2, SI-1512 Ljubljana
Telephone: +386 1 432 31 44 • Fax: +386 1 230 14 35
Email: import.books@cankarjeva-z.si • Web site: <http://www.cankarjeva-z.si/uvoz>

SPAIN

Díaz de Santos, S.A., c/ Juan Bravo, 3A, E-28006 Madrid
Telephone: +34 91 781 94 80 • Fax: +34 91 575 55 63
Email: compras@diazdesantos.es, carmela@diazdesantos.es, barcelona@diazdesantos.es, julio@diazdesantos.es
Web site: <http://www.diazdesantos.es>

UNITED KINGDOM

The Stationery Office Ltd, International Sales Agency, PO Box 29, Norwich, NR3 1 GN
Telephone (orders): +44 870 600 5552 • (enquiries): +44 207 873 8372 • Fax: +44 207 873 8203
Email (orders): book.orders@tso.co.uk • (enquiries): book.enquiries@tso.co.uk • Web site: <http://www.tso.co.uk>

On-line orders

DELTA Int. Book Wholesalers Ltd., 39 Alexandra Road, Addlestone, Surrey, KT15 2PQ
Email: info@profbooks.com • Web site: <http://www.profbooks.com>

Books on the Environment

Earthprint Ltd., P.O. Box 119, Stevenage SG1 4TP
Telephone: +44 1438748111 • Fax: +44 1438748844
Email: orders@earthprint.com • Web site: <http://www.earthprint.com>

UNITED NATIONS

Dept. I004, Room DC2-0853, First Avenue at 46th Street, New York, N.Y. 10017, USA
(UN) Telephone: +800 253-9646 or +212 963-8302 • Fax: +212 963-3489
Email: publications@un.org • Web site: <http://www.un.org>

UNITED STATES OF AMERICA

Bernan Associates, 4501 Forbes Blvd., Suite 200, Lanham, MD 20706-4346
Telephone: 1-800-865-3457 • Fax: 1-800-865-3450
Email: customercare@bernan.com • Web site: <http://www.bernan.com>

Renouf Publishing Company Ltd., 812 Proctor Ave., Ogdensburg, NY, 13669
Telephone: +888 551 7470 (toll-free) • Fax: +888 568 8546 (toll-free)
Email: order.dept@renoufbooks.com • Web site: <http://www.renoufbooks.com>

Orders and requests for information may also be addressed directly to:

Marketing and Sales Unit, International Atomic Energy Agency

Vienna International Centre, PO Box 100, 1400 Vienna, Austria
Telephone: +43 1 2600 22529 (or 22530) • Fax: +43 1 2600 29302
Email: sales.publications@iaea.org • Web site: <http://www.iaea.org/books>



INTERNATIONAL ATOMIC ENERGY AGENCY
VIENNA
ISBN 978-92-0-133510-4
ISSN 1011-2642