

# 2007 第二届

# 国际核电厂寿期管理大会

Second International Symposium on Nuclear Power  
Plant Life Management

---

## 会议手册

Meeting Manuals



**Welcome to the participants from all over the world.**

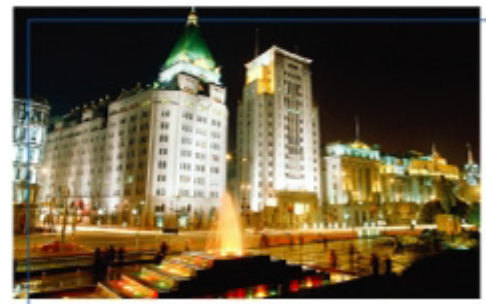
October in autumn is the most pleasant season in Shanghai.

The conference committee members from the Qinshan Nuclear Power Base of CNNC will provide our best service.

The conference will be held at the Shanghai International Convention Center (SHICC). The advanced facilities and upscale service will ensure a successful conference.

SHICC is located in Pudong, the symbol of Reform and the Opening Up of China. During the meeting the conference committee will hold a dinner cruise, a chance for participants to enjoy the night views from the Huangpu River.

We wish everybody a happy stay in Shanghai.



# Contents

● Meeting Notes	-----	1
● Timetable	-----	2
● Meeting Rooms	-----	3
● Transportation	-----	6
● Direction: Confernce room – Super Brand Mall (For Lunch)	-----	11
● Activities	-----	12
● Services	-----	13
● Fees and Charges	-----	14

# Meeting notes

## » Time and place of registration

- **Time of registration:**  
Oct.14 (Sunday) 16:00-18:00 (non-Chinese) 8:00-18:00 (Chinese)  
Oct.15 (Monday) 08:00-09:20
  - **Time and place for the Welcome Reception (Hosted by the IAEA)**  
Oct.14 (Sunday) 17:00-19:00  
The hall on the seventh floor of the Shanghai International Convention Center
  - **Place for registration of non-Chinese guests:**  
The hall on the seventh floor of the Shanghai International Convention Center / Oriental Riverside Hotel  
Address: No. 2727 Pudong Riverside Rd.  
Tel: 021—50370000
  - **Place for registration of Chinese guests;**  
The hall on the first floor in Shanghai Jiang Tian Hotel  
Address: No.3456 South Pudong Rd.  
Tel: 021—58705870
- 

## » Hotel Addresses

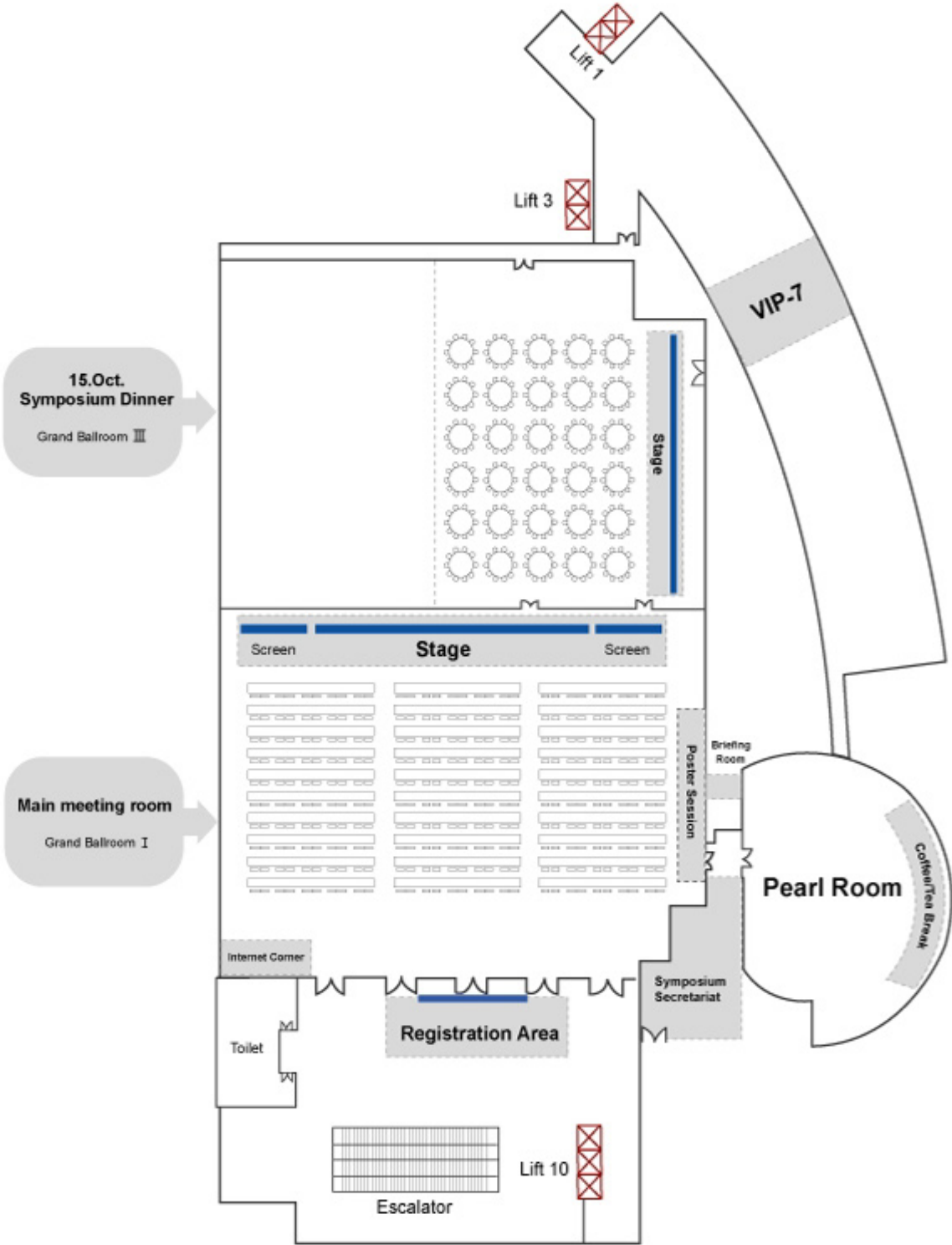
- **Shanghai International Convention Center / Oriental Riverside Hotel**  
Address: No.2727 Pudong Riverside Rd.  
Tel: 021—50370000  
Room No. of the Organizing Committee:  
Contacts :  
Tel:
- **Tong Mao Hotel**  
Address: No.357 Songlin Rd.  
Tel: 021—58300000  
Room No. of the Organizing Committee:  
Contacts :  
Tel:
- **Embassy Suite Hotel**  
Address: No.1607 South Pudong Rd.  
Tel: 021—58888882  
Room No. of the Organizing Committee:  
Contacts :  
Tel:
- **Jiang Tian Hotel**  
Address: No.3456 South Pudong Rd.  
Tel: 021—58705870  
Room No. of the Organizing Committee:  
Contacts :  
Tel:

## ➤➤ The Timetable of Second International Symposium on Nuclear Power Plant Life Management (Oct.14-19)

Sunday, 14 Oct.		Tuesday, 16 Oct.		Wednesday, 17 Oct.		Thursday, 18 Oct.	
16:00-18:00	Registration (7 <sup>th</sup> Floor in front of the Grand Ballroom)	08:30-10:15	Plenary Session Keynote Speeches (Grand Ballroom)	08:30-10:15	Plenary Session Keynote Speeches (Grand Ballroom)	08:30-09:00	Plenary Session Keynote Speeches (Grand Ballroom)
17:00-19:00	Welcome Reception Hosted by IAEA	10:15-10:30	Coffee/Tea Break	10:15-10:30	Coffee/Tea Break	09:00-11:00	Session 6 Regulatory Issues Concerned with Plant Life Management (Grand Ballroom)
<b>Monday, 15 Oct.</b>							
08:00	Registration (7 <sup>th</sup> Floor in front of the Grand Ballroom)	Session 2-1 Ageing Management Programme (Grand Ballroom)  Session 2-4 ISI for Ageing Management (Room F on the 5 <sup>th</sup> Floor)  Session 3-1 Environmental Assisted Cracking (Room B on the 5 <sup>th</sup> Floor)  Session 3-4 Flow Accelerated Corrosion (Room D on the 5 <sup>th</sup> Floor)		Challenges and Needs for PLIM for LTO (Grand Ballroom)  Lunch Hosted by IAEA		Coffee/Tea Break	
09:30-11:10	Opening Session (Grand Ballroom)	10:30-12:10	Parallel Sessions	12:10-14:00	Parallel Sessions	11:00-11:20	Coffee/Tea Break
11:10-11:30	Coffee/Tea Break	12:10-14:00	Lunch Hosted by IAEA	14:00-15:40	Parallel Sessions	11:20-12:00	Session 8 Continued (Grand Ballroom)
11:30-12:45	Session 1-1 Approaches to PLIM (Grand Ballroom)	Session 2-2 Ageing Management Programme (Grand Ballroom)  Session 2-5 Probabilistic Approaches to Ageing Management (Room F on the 5 <sup>th</sup> Floor)  Session 3-2 Integrity and Material Degradation Issues (Room B on the 5 <sup>th</sup> Floor)  Session 3-5 Fatigue Damage (Room D on the 5 <sup>th</sup> Floor)		Session 3-7 RPV/RPVI Integrity (Room D on the 5 <sup>th</sup> Floor)  Session 4 I&C Modernization (Room B on the 5 <sup>th</sup> Floor)  Session 5 Economics of Plant Life Management (Room F on the 5 <sup>th</sup> Floor)		Closing Session Recommendations and Conclusions (Grand Ballroom)	
12:45-14:00	Lunch Hosted by IAEA	15:40-16:00	Coffee/Tea Break			Closing of the Symposium	
14:00-15:40	Session 1-2 Approaches to PLIM (Grand Ballroom)	16:00-18:00	Parallel Sessions				
15:40-16:00	Coffee/Tea Break	18:30	Dinner Cruise Hosted by the CNNC				
16:00-18:15	Session 1-3 Approaches to PLIM (Grand Ballroom)	Session 2-3 Ageing Management Programme for BWR (Grand Ballroom)  Session 2-6 Ageing Management Programme for PHWR (Room F on the 5 <sup>th</sup> Floor)  Session 3-3 Non-Metallic Material Ageing Management (Room B on the 5 <sup>th</sup> Floor)  Session 3-6 RPV/RPVI Integrity (Room D on the 5 <sup>th</sup> Floor)		Coffee/Tea Break			
18:30	Symposium Dinner Hosted by the CNNC (Grand Ballroom)			Poster Session (Grand Ballroom)			
<ul style="list-style-type: none"> <li>Poster will be on display throughout the Symposium</li> <li>Commercial exhibits will be shown in the Pearl Room on the 7<sup>th</sup> Floor</li> </ul>							
						<b>Friday, 19 Oct.</b>  08:00-17:00 Site Tour Qinshan Nuclear Power Plant Site	

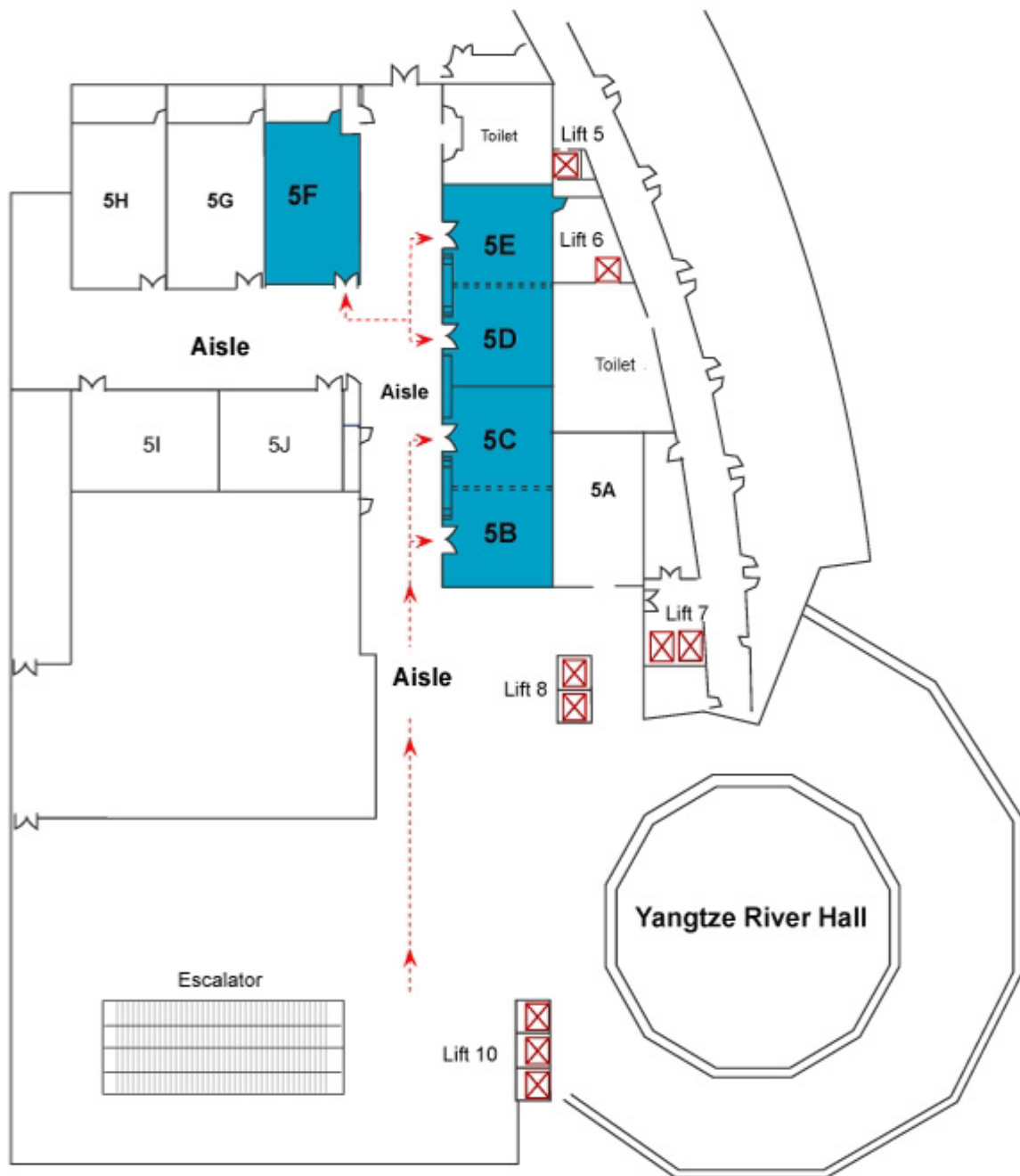
# Meeting rooms

» Map of the Seventh Floor of the Shanghai International Convention Center (SHICC)



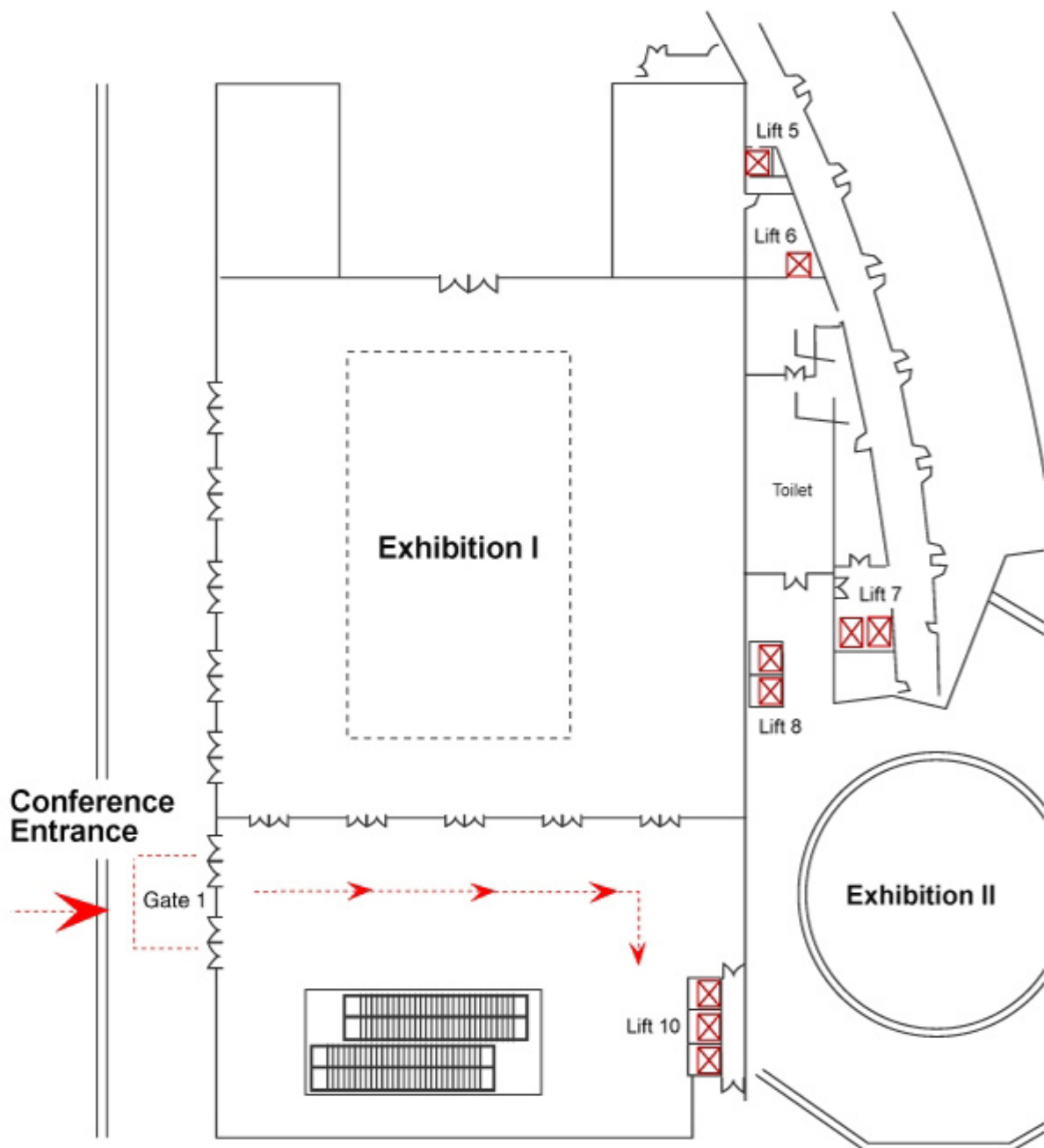
# Meeting rooms

## » Map of the Fifth Floor of the Shanghai International Convention Center (SHICC)



# Meeting rooms

## » Map of the First Floor of Shanghai International Convention Center (SHICC)





# T

# ransportation

## » Transportation Arrangements

The organizers do not offer transportation between the airport, the railway station and the hotels. The participants are responsible for their own transportation. Directions are printed on the next three pages.

The organizers offer a shuttle bus from each hotel to the Shanghai International Convention Center (SHICC) and for the site tour to the Qinshan Nuclear Power Base.

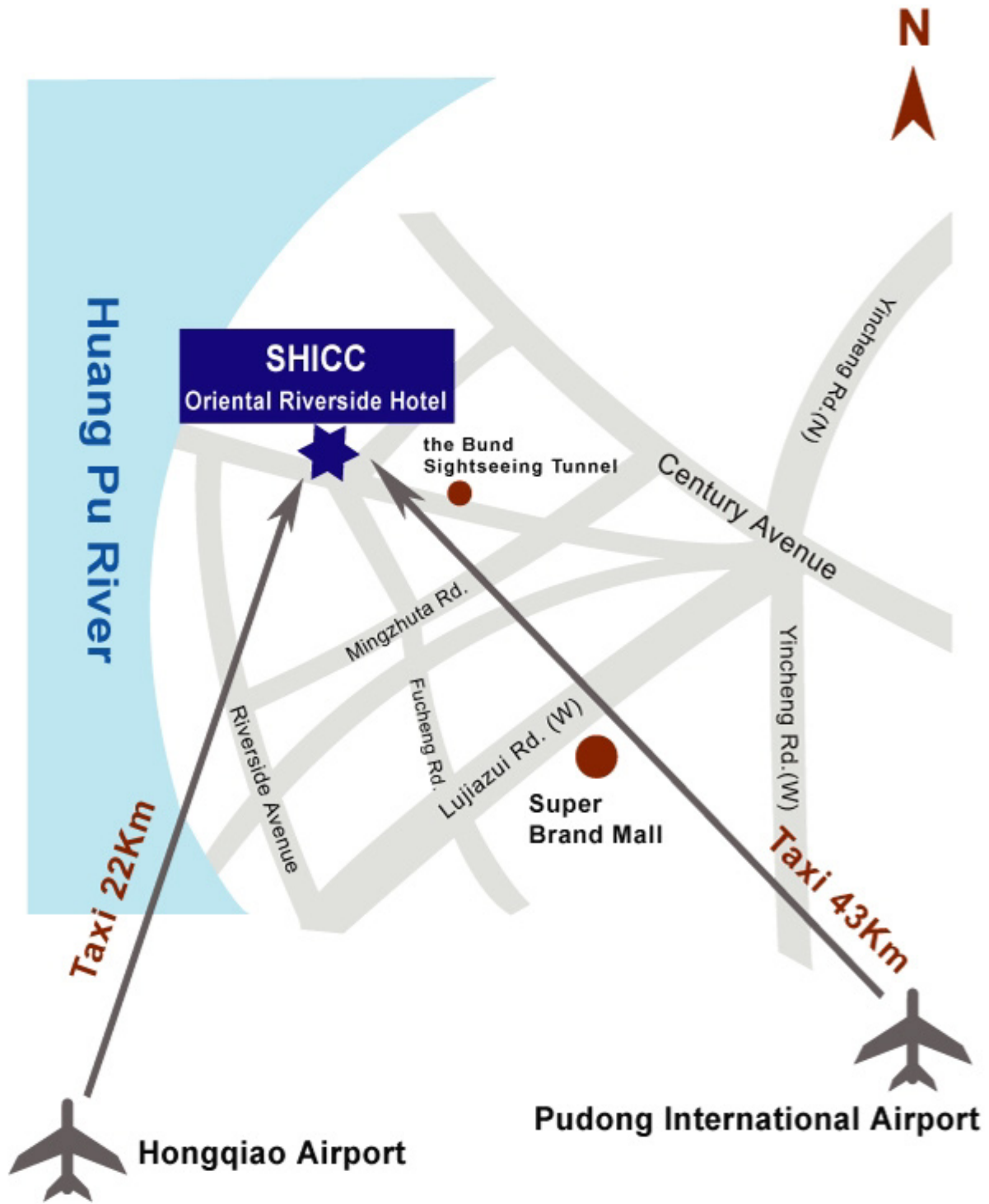
Each shuttle bus will display a destination sign, such as: Shanghai International Convention Center (SHICC), Tong Mao Hotel, Embassy Suite Hotel, Jiang Tian Hotel.

## » Taxi Fees

Time	Within 3km (Fixed Fee)	3km-10km	More than 10km
7:00-23:00	¥ 11	¥ 2.1/km	¥ 3.2/km
After 23:00	¥ 14	¥ 2.7/km	¥ 4/km

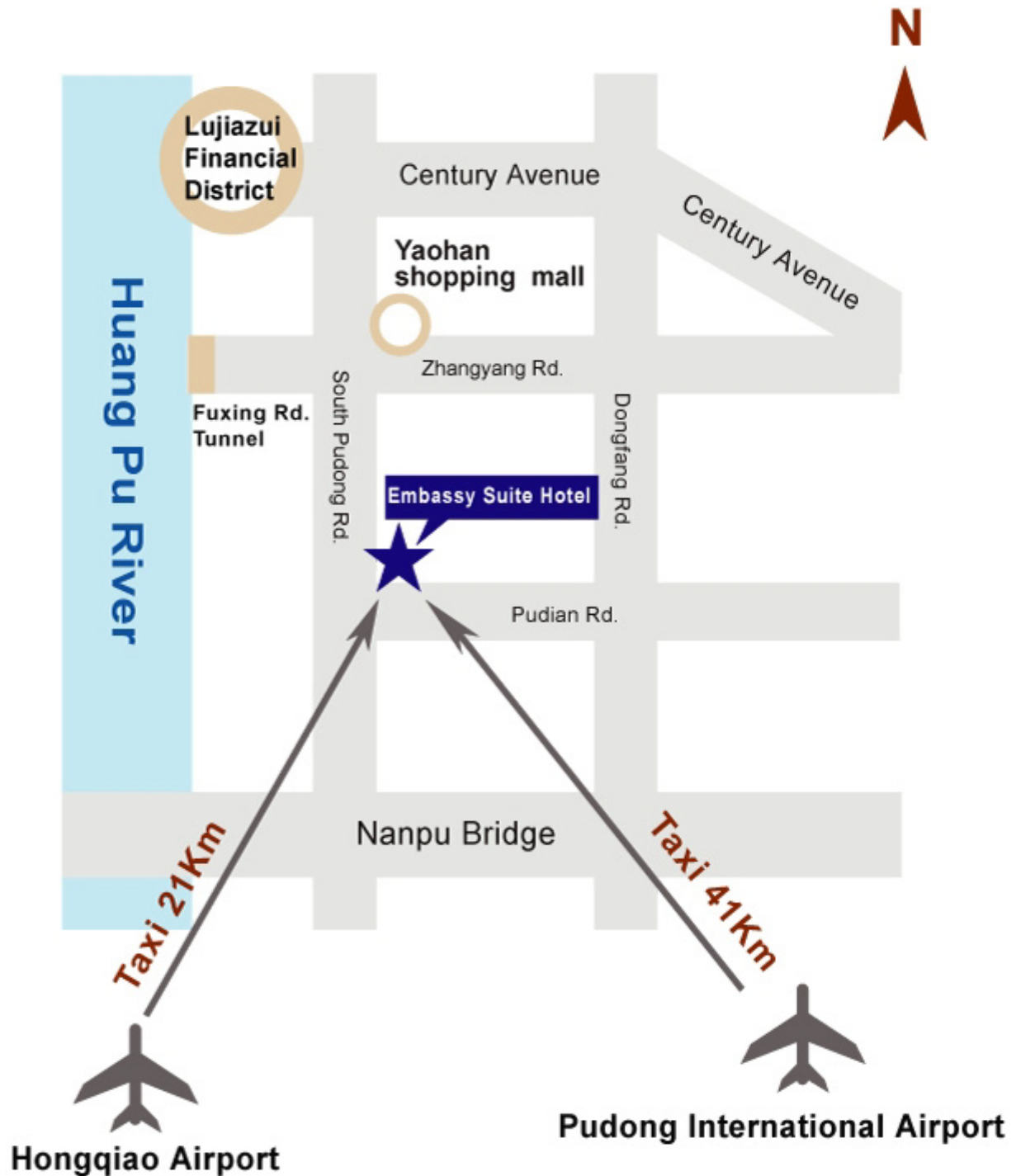
# Transportation

» Direction: Airports to the SHICC Oriental Riverside Hotel



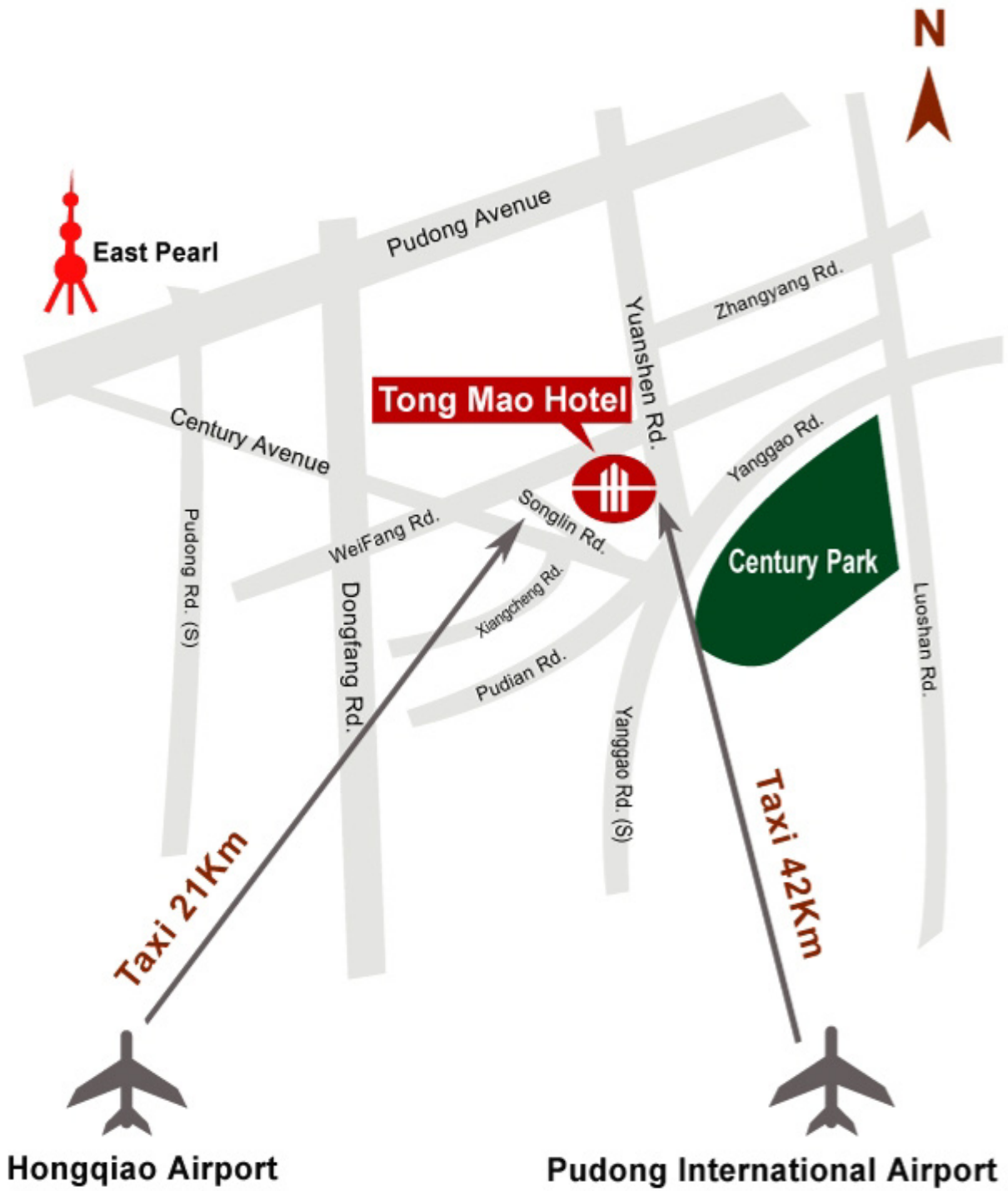
# Transportation

» Direction: Airports to the Embassy Suite Hotel



# Transportation

» Direction: Airports to the Tong Mao Hotel



## >> Shuttle bus schedule (Oct.15-18)

Date	Hotels-SHICC	Destination	Activity	SHICC-Hotels	Destination	Activity	Notes
10.15	7:45	Shanghai International Convention Center (SHICC)	Registration/ Opening Ceremony/ Meeting	20:40	Tong Mao	Return to hotel	Participants who couldn't register on the 14th, please take the bus at 7:45 to register at the SHICC
	8:00				Embassy Suite Jiang Tian		
10.16	8:00	SHICC	Meeting	18:00	Pu Jiang Port	Dinner Cruise	1. Shuttle buses leave for the dinner cruise at 18:00 at Gate 1 of SHICC 2. Shuttle buses return to hotels after the dinner cruise 3. The dinner cruise will last about 2 hours.
10.17	8:00	SHICC	Meeting	18:00	Tong Mao	Return to hotel	
					Embassy Suite Jiang Tian		
10.18	8:00	SHICC	Meeting	13:45	Tong Mao	Return to hotel	
					Embassy Suite Jiang Tian		

Buses leave from: 1. The front gate of the Tong Mao Hotel/the Embassy Suite Hotel/the Jiang Tian Hotel to the SHICC  
2. Gate 1 of SHICC to the Tong Mao Hotel/the Embassy Suite Hotel/the Jiang Tian Hotel

## Direction: Conference room – Super Brand Mall (For Lunch)

- About 200 meters walk



## » October 15th (Monday) Symposium Dinner

- 18:30-20:30 Symposium Dinner (No.3 room of Grand Ballroom)  
The accompanying persons are responsible for their own transportation to the SHICC for the symposium dinner
- 20:40 Buses leave for the hotels at Gate 1 of the Shanghai International Convention Center (pay attention to the destination sign on each bus)

## » October 16th (Tuesday) Dinner Cruise

- 18:00-18:30 Shanghai International Convention Center to Jun Zi Lan boat (Get on the shuttle buses at Gate 1 of the Shanghai International Convention Center)  
The accompanying Persons are responsible for their own transportation to the SHICC to take the shuttle buses
- 18:30-20:30 Dinner Cruise
- 20:40 Shuttle buses leave for the hotels (pay attention to the destination sign on each bus)

## » October 19th (Friday) Site tour of the Qinshan Nuclear Power Base

- 8:00 Buses leave the Hotel  
Participants get on the buses at the front gate of the designated hotels  
Participants who stayed in other hotels should get on the buses at Gate 1 of the Shanghai International Convention Center
- 8:00-10:30 Shanghai to Qinshan
- 10:30-12:30 Site tour to the Qinshan Nuclear Power Base  
Visitors center of Qinshan Phase I  
Simulators of Qinshan Phase I, II, III  
Extension project -Units 3 and 4  
The exterior site of Qinshan Phase III
- 12:30-12:45 Qinshan Nuclear Power Base to the Guoguang Hotel
- 12:45-13:30 Lunch
- 14:00-16:00 Qinshan to Shanghai

# Services

## » Reminder

Shanghai usually has a pleasant weather in October and most of the days will be cloudy. The temperature will be warm in the day and cool in the night. A certain amount of rain is expected. It would be best to wear clothing suited for spring or autumn. Make sure you will have the right clothes and don't catch cold.

For any information, please contact the conference committee in the hotels.

## » Useful Numbers:

- \* Police: 110
- \* Ambulance: 120
- \* Weather forecast: 12121
- \* Fire: 119

- ## » Taxi reserving :
- Jing Jiang Co.Ltd: 64648888
  - Da Zhong Co.Ltd: 96822
  - Johnson Co.Ltd: 62580000
  - Bus Co.Ltd: 96840

- ## » You can also call a taxi from the concierge at the hotel.



# Fee and Charges

- Participants are requested to check out of their hotels before departure.
- Shuttle buses from hotels to the Shanghai International Convention Center (SHICC) and for the dinner cruise and tour of the Qinshan Nuclear Power Base during the meeting will be provided by the CNNC.



