

Risk Communication Activities of JAEA after the Fukushima Daiichi Accident



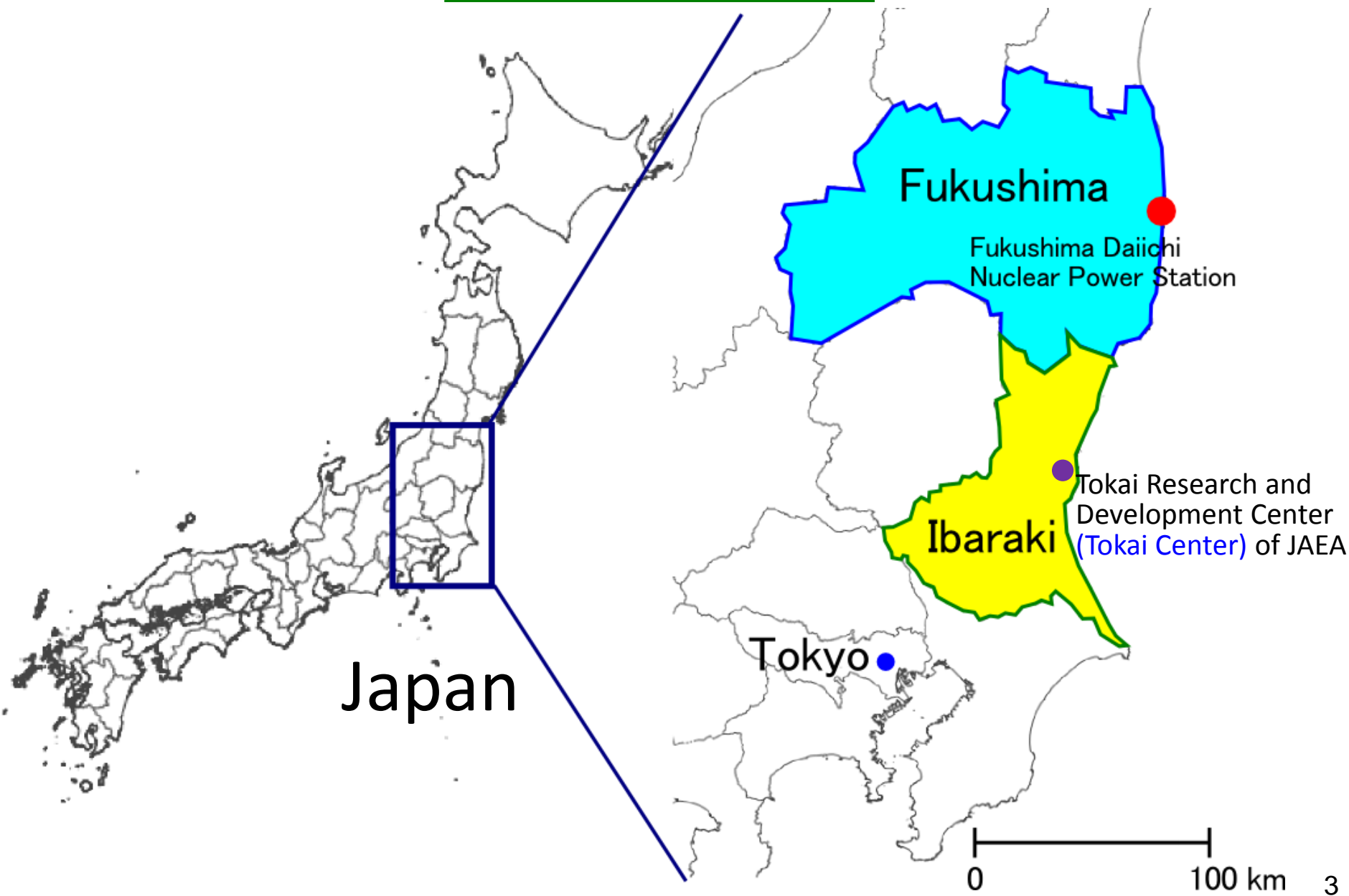
Hirofumi Takashita

Risk Communication Study Office
Tokai Research and Development Center
Japan Atomic Energy Agency (JAEA)

Contents

- **Outline of our risk communication activities after the Fukushima nuclear accident**
- **Awareness of residents in Fukushima and Ibaraki prefectures**
- **Summary**

Location



Risk Communication Activities after the Fukushima Nuclear Accident

★ Explanatory meetings on radiation and its health effects

- ◆ Ibaraki: Start in May 2011, 90 meetings, ~7,200 participants.
- ◆ Fukushima: Start in July 2011, 232 meetings, ~18,700 participants.
(as of Dec. 2013)

★ Risk communication with Fukushima residents during whole-body counting (WBC) examinations

- ◆ Start at Tokai Center of JAEA in July 2011.
- ◆ Tokai Center screened ~22,000 residents (as of Dec. 2013).



Main purpose : To reduce residents' anxiety and concerns about radiation risk

Implementation Process of Explanatory Meetings

Create slides with messages



Form dispatch team



Listen to participants' needs and questions



Prepare explanation slides and answers to the questions



Hold the meeting



Evaluate the effects by analyzing questionnaires



Answer questions received after the meeting

Explanatory Meeting

Flow of the meeting

- Explanation using slides



- Question and answer session



- Radiation measurement experiment
(in Ibaraki pref.)



Risk Communication during WBC Examinations

- JAEA has taken internal dose measurements of Fukushima residents using whole-body counters.
- Tokai Center of JAEA has implemented risk communication with the examinees and their families.



Whole-body counting



Explanation and risk communication

Awareness of Residents in Fukushima and Ibaraki Prefectures

➤ Questionnaire survey at the explanatory meetings and the WBC examination



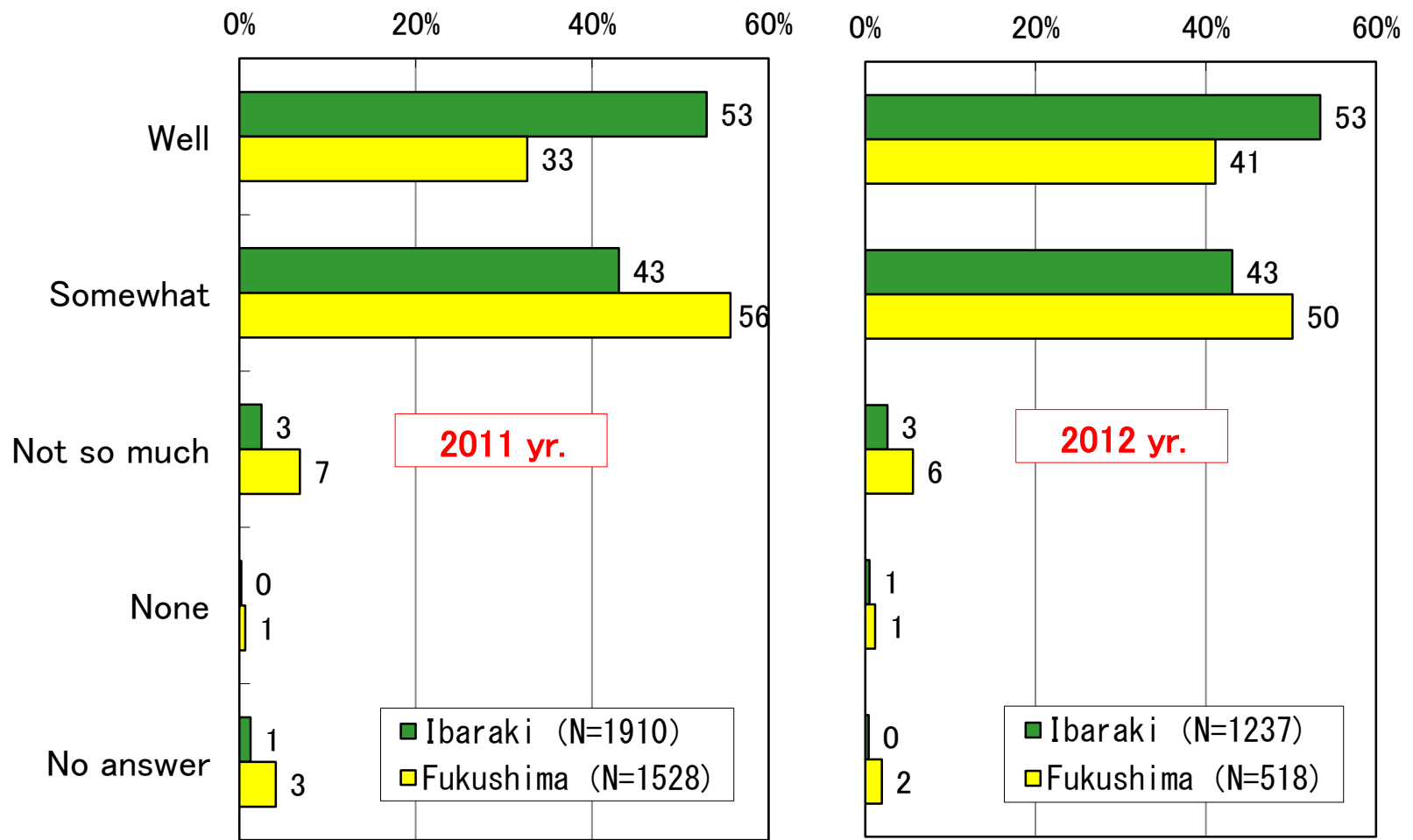
➤ Survey participants ➡ Participants of the meetings, WBC examinees (and their families)
 (Mainly)

- Ibaraki → Ibaraki residents
- Fukushima → Fukushima residents outside of the evacuation area
- WBC → Fukushima residents in the evacuation area and its surrounding area

➤ Analysis period covered ➡ From the start to Oct. 2012

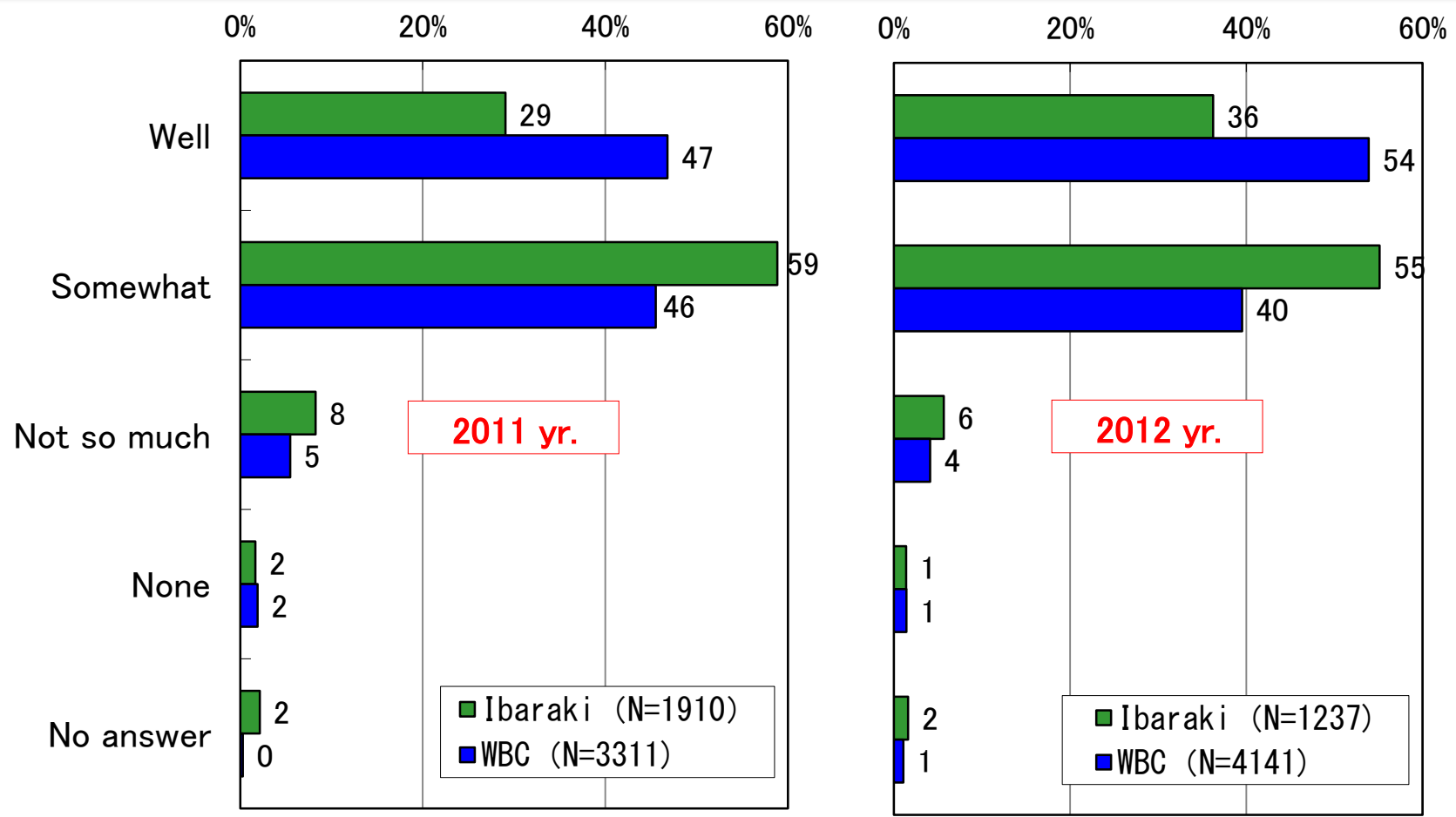
Degree of Understanding

- Most participants understood the contents of the meetings.
- “Well” + “Somewhat” understood :
Ibaraki → ~ 96%, Fukushima → ~ 90%



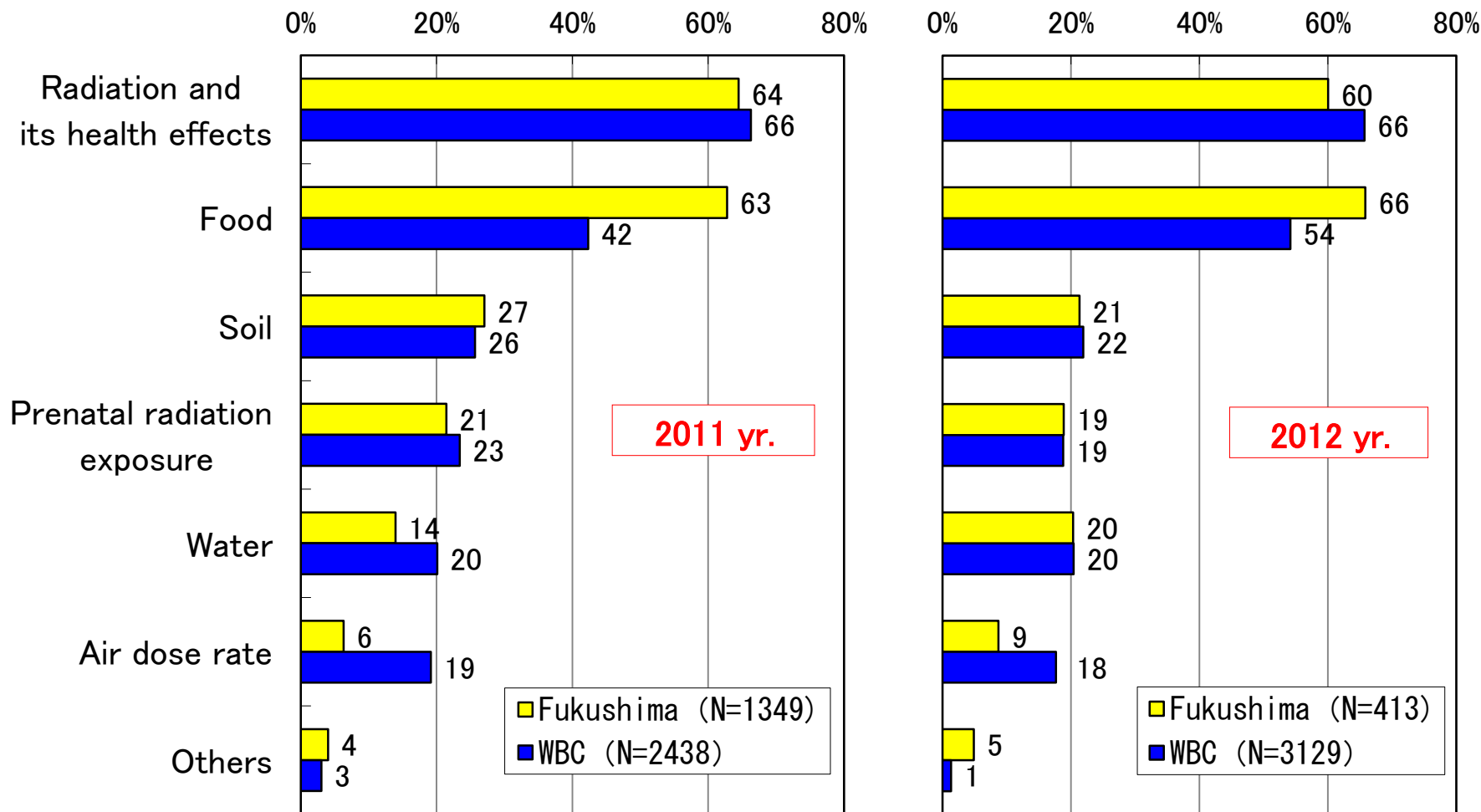
Degree of Reduced Anxiety

- Most participants and WBC examinees experienced reduced anxiety.
- “Well” + “Somewhat” reduced :
Ibaraki → ~ 90%, WBC → ~ 93%



Items Related to Anxiety and Worry

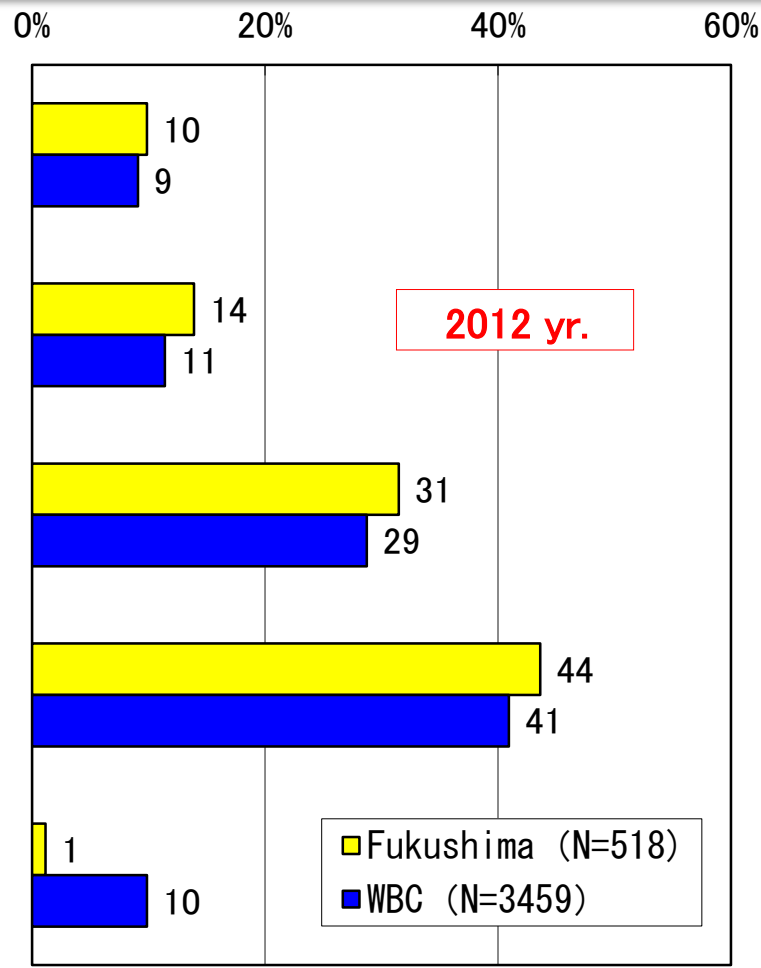
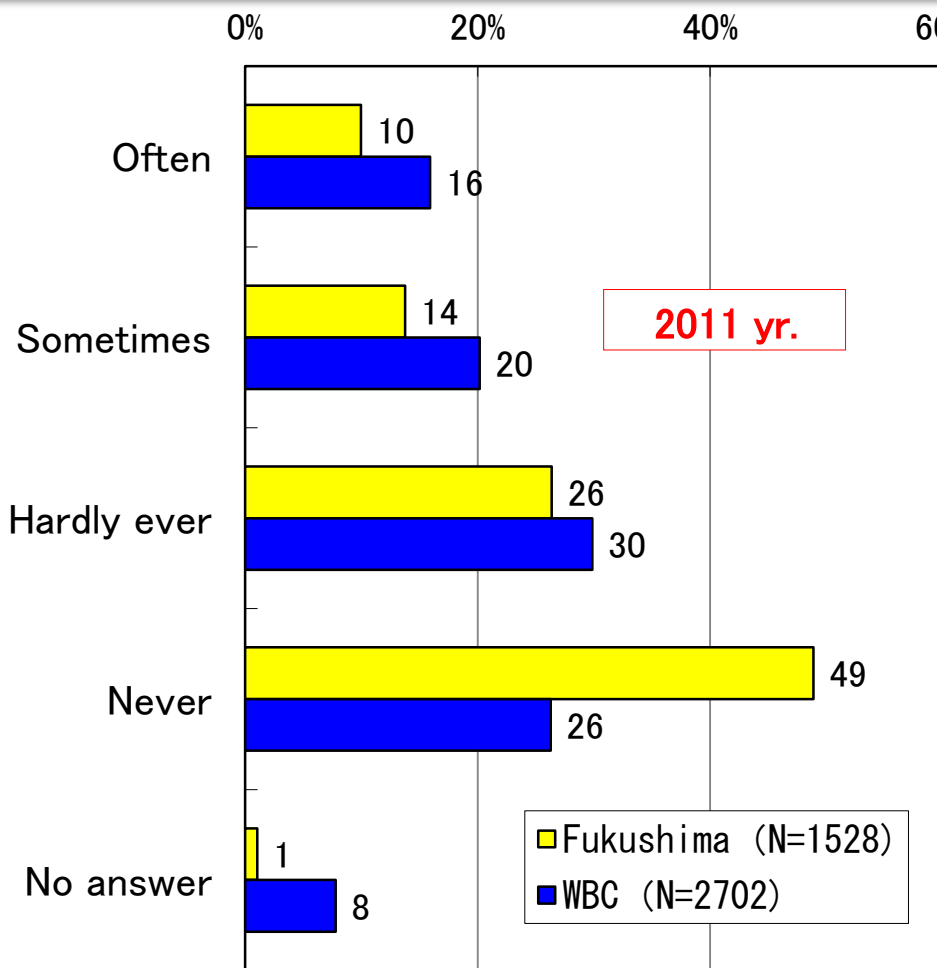
- “Radiation and its health effects,” “Food” : Top two items
- “Food” increased, “Soil” decreased in 2012.



(Two items selected)

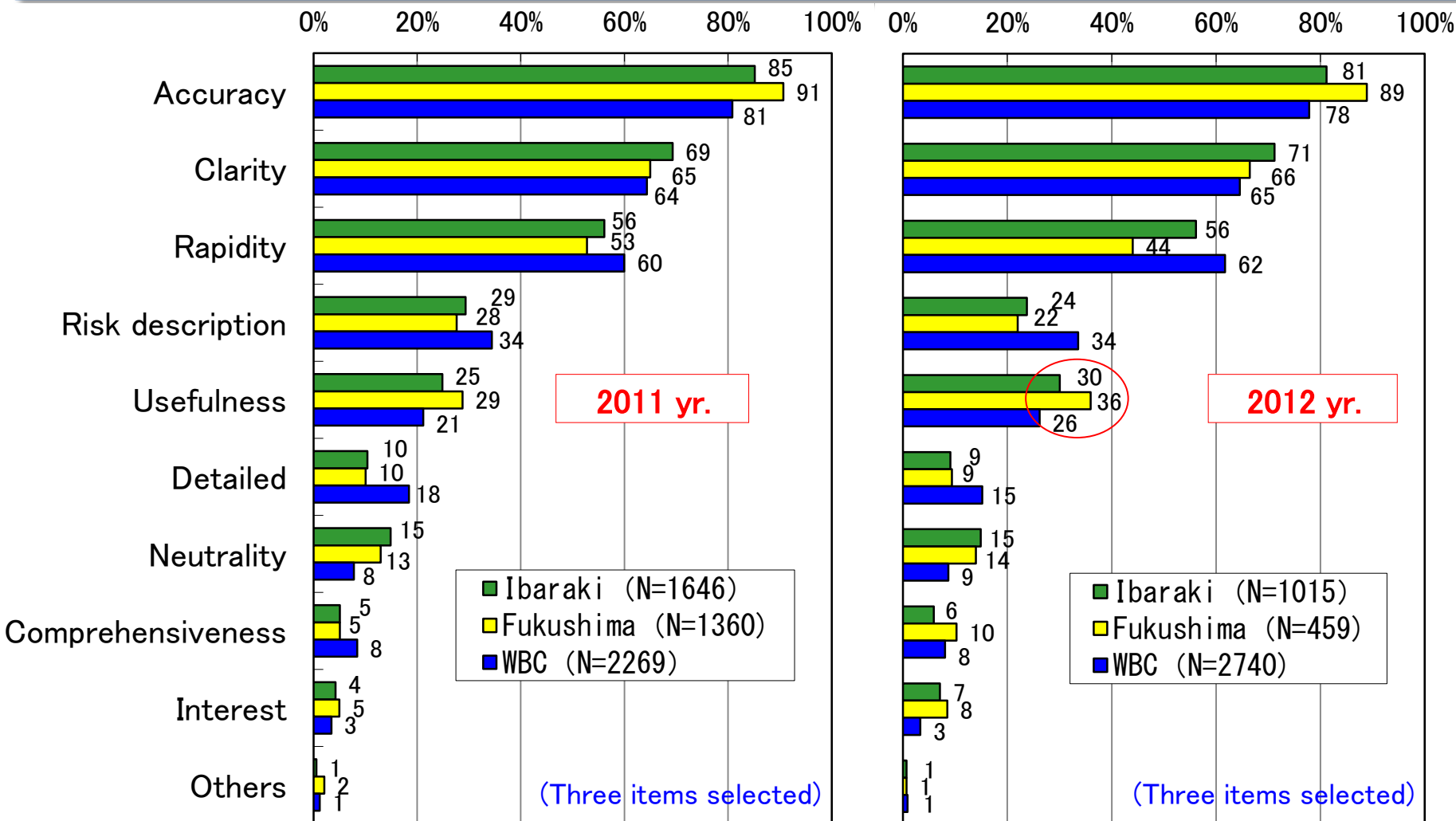
Frequency of Obtaining Radiation Information before the Accident

- “Often” + “Sometimes” : Fukushima → 24%(2011), 24%(2012)
WBC → 36%(2011), 20%(2012)
- Frequency is rather high for people who lived near nuclear plants.



Important Points of Nuclear Information

- “Accuracy,” “Clarity,” and “Rapidity” are important.
- Important points have not changed drastically in areas.
- In 2012, top 3 items do not change and “Usefulness” increases.



Summary (1/2)

Risk Communication Activities after the Fukushima Nuclear Accident

- ✓ Explanatory meetings about radiation {
 - in Ibaraki.
 - in Fukushima.
- ✓ Risk communication during WBC examinations



Questionnaire Survey of Residents



Survey results

● Evaluation of our risk communication activities :

➔ Most participants and examinees understood our explanation and reduced their anxiety.

● Anxiety and worry :

- Top 2 items were “Radiation and its health effects” and “Food.”
- “Food” increased and “Soil” decreased from 2011 to 2012.

Survey results (continued)

- Frequency of obtaining radiation information : ➡ Low
- Important points of nuclear information :
 - Top 3 items were “Accuracy,” “Clarity,” and “Rapidity.”
 - “Usefulness” increased from 2011 to 2012.

Future risk communication

- ➡ We should explain radiation health effects and food contamination.
- ➡ Useful information (ex. radiation exposure reduction methods) should also be provided.
- ➡ We should use exact and plain words and avoid technical terms or jargon.
- ➡ Active listening and sympathizing with affected residents are important in risk communication.