

Organizational Interfaces in Offsite Nuclear Responses

IAEA International Experts' Meeting on Severe Accident Management

March, 2014

Dave Nodwell

Contents

- Ontario Background
- Post-Fukushima Considerations
- Organizational Integration/Interfaces
- Stress Tests
- Managing Challenges
- Findings and Next Steps



Pembroke

Ottawa

Peterborough

Bruce Nuclear Power Station

Toronto

Windsor



Chalk River Laboratory



Bruce Nuclear Power Station



Bruce Nuclear Power Station

Kincardine

Pembroke

Ottawa

Peterborough

Toronto



Enrico Fermi 2 Nuclear Power Plant



Pembroke

Ottawa

Kincardine

Windsor



Bruce Nuclear Power Station



Darlington Nuclear Power Station



Enrico Fermi 2 Nuclear Power Plant



Pembroke

Ottawa

Kincardine

Windsor



Bruce Nuclear Power Station



Pickering Nuclear Power Station



Enrico Fermi 2 Nuclear Power Plant



Darlington Nuclear Power Station



Bruce Nuclear Power Station



• Toronto

• Kincardine

• Peterborough

• Ottawa

• Pembroke



Enrico Fermi 2 Nuclear Power Plant

• Windsor



Pickering Nuclear Power Station



Darlington Nuclear Power Station

Post Fukushima Considerations

- Clarify the aim of offsite planning

Occurs when there is an actual or potential hazard to public health, property, or the environment from ionizing radiation...Such a hazard will usually be caused by an accident, malfunction, or loss of control involving radioactive material or a nuclear facility

- Context of a natural disaster



All those
tired of
Winter,
please raise
your hands!

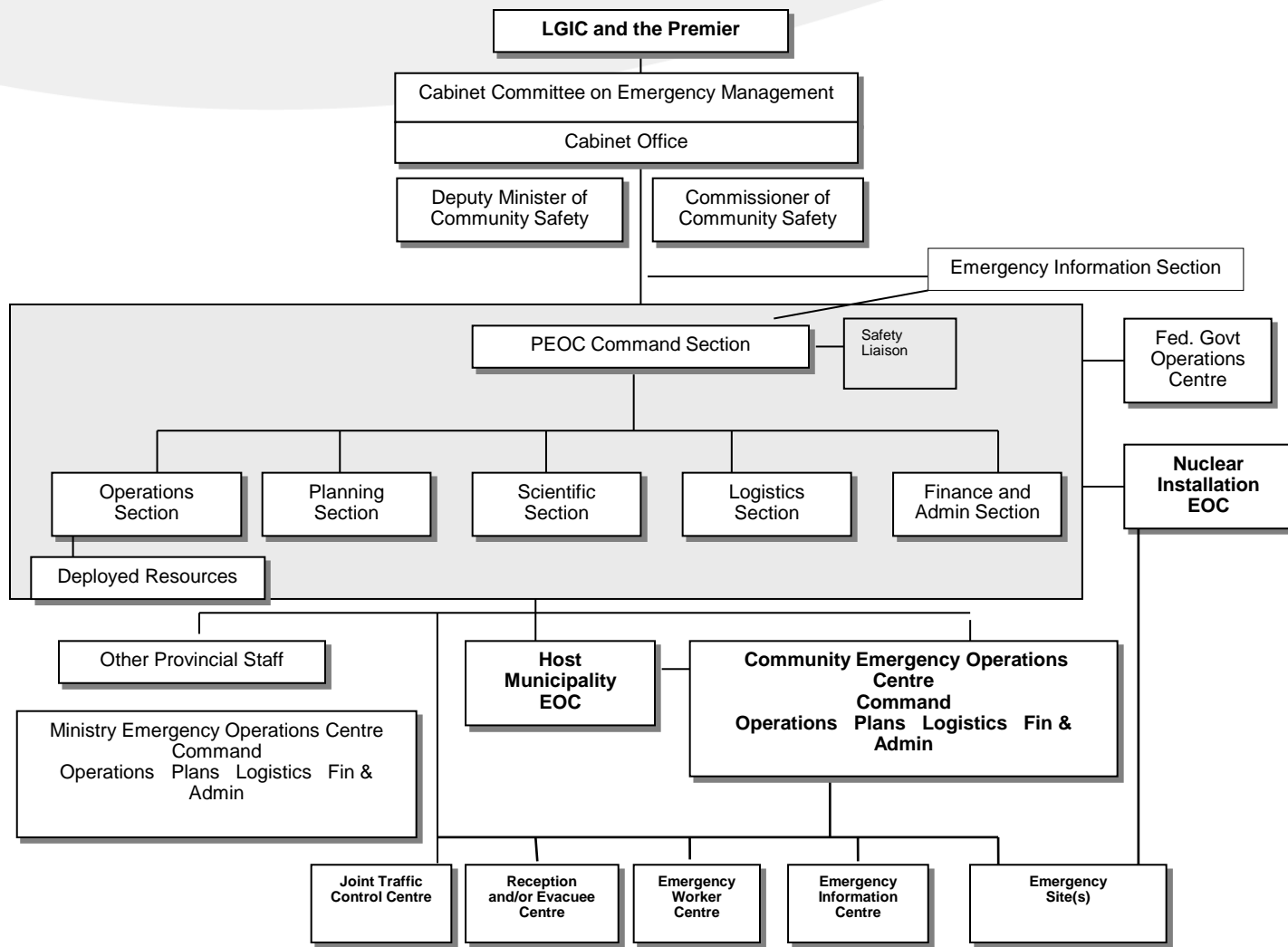
FEB/ 5/2014

February 2014 – Bruce PZ

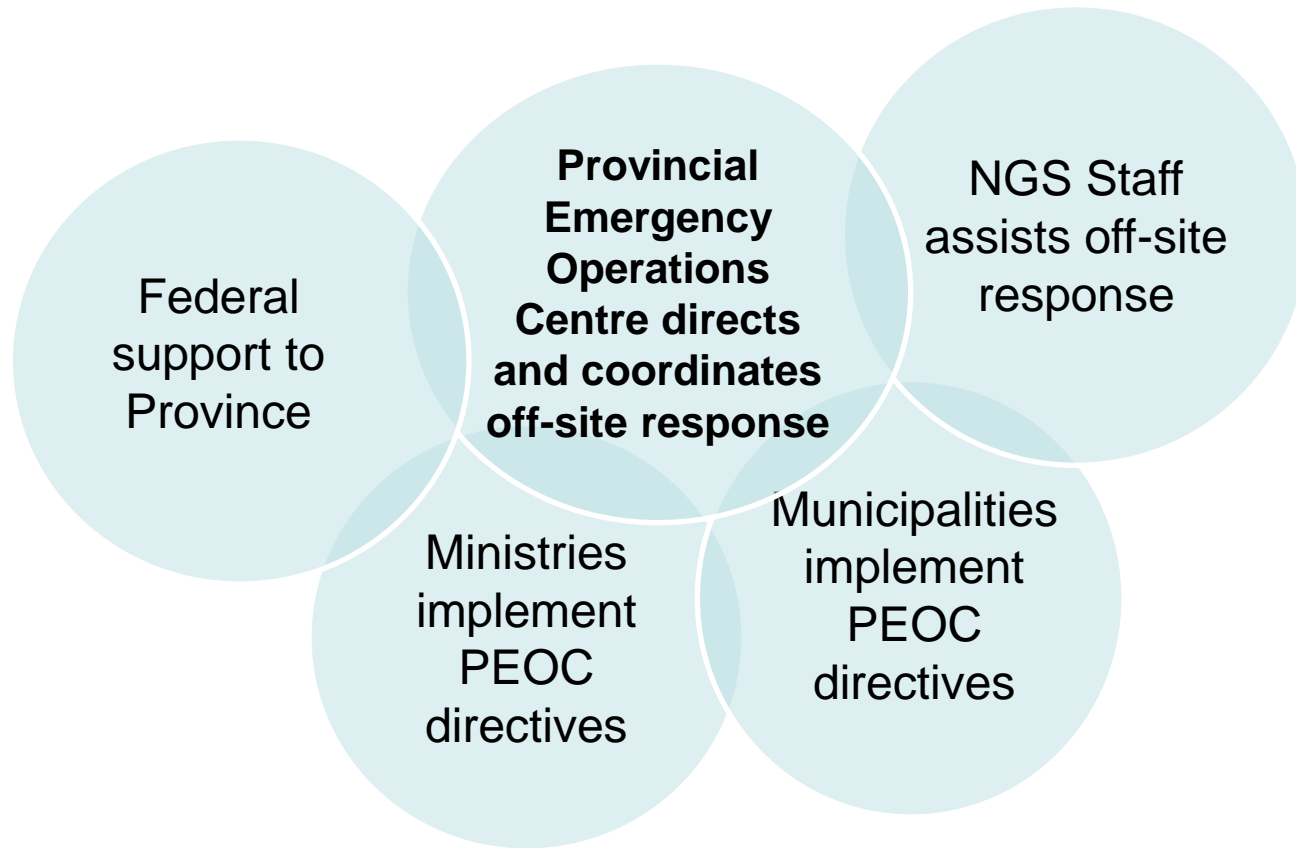


December 2014 – Pickering PZ





Nuclear Response Integration



Interfaces – A Closer Look

- Formal Notifications
- Information products
- Situational awareness
- Scientific data
- Operational information/response status
- Public directives/communications
- Assets and resources

Interfaces – A Closer Look

- Web based
- Email
- Fax
- Telephone (cell, landline or SAT)
- Person to person
- Provision of services

Interfaces with the Public

- The most critical of interfaces
- Social media is a “game changer”



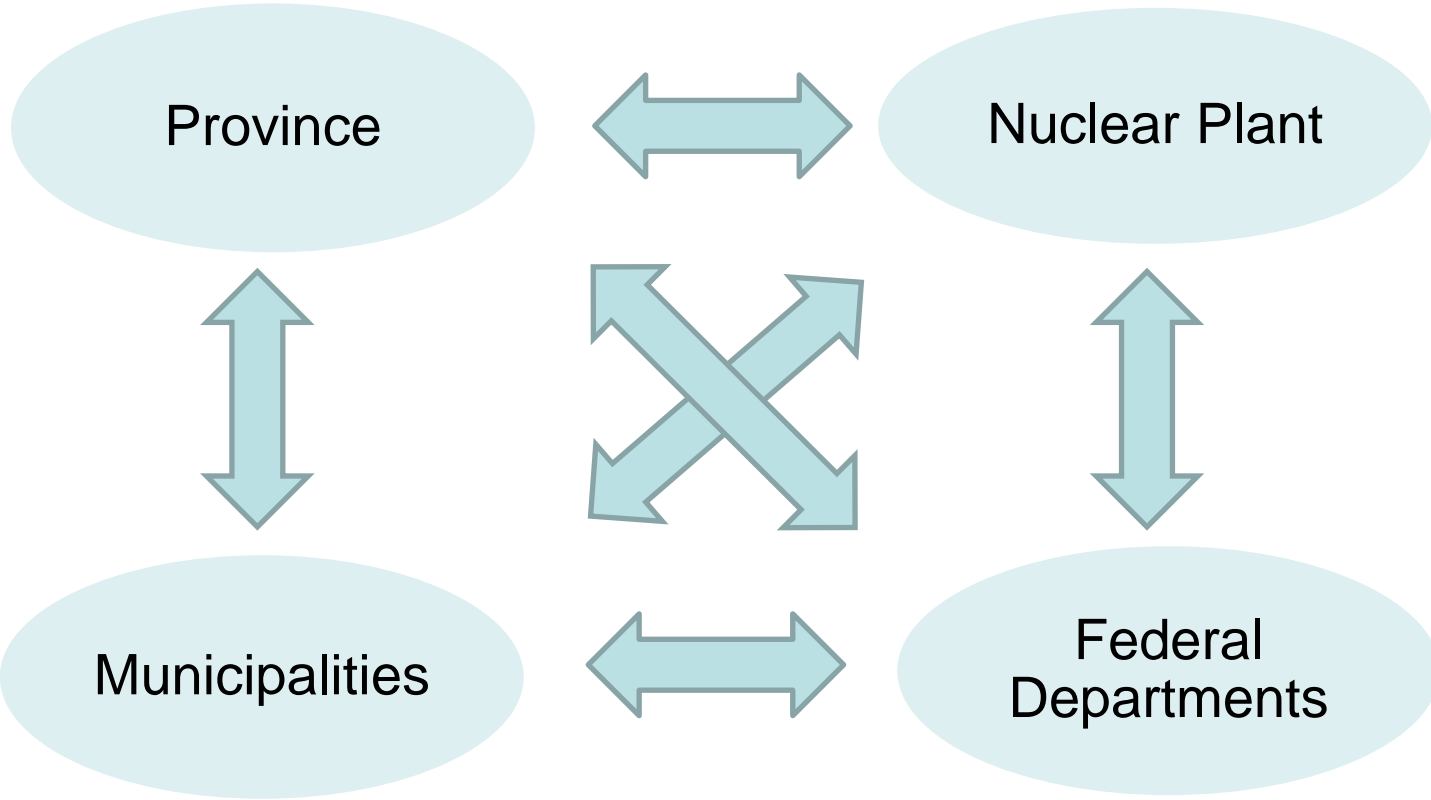
Nuclear Workshops

- Stress tests carried out through recent multi-jurisdictional exercises and workshops demonstrated that the quality and robustness of the interfaces between organizations is integral to an effective coordinated response.

Workshops

- Scenario based
- Explored all stages of a BDBA nuclear response with a natural disaster
- Three areas of exploration:
 - critical dependencies
 - decision making
 - communication

Critical Dependencies



Critical Dependencies - Questions

- Are data transmittals going to the right organizations at the right time?
- How are different units of measurement and format resolved?
- Is interoperability an issue at any level?
- If specific systems are non-operational, are there other sources of data and information that could be utilized?
- In the absence of information, how would you proceed?
- What is the capacity of human resources and required assets?

Decision Making

- Public Alerting
- Protective Actions
 - KI, Evacuation, sheltering
 - Shutting down air, rail, marine traffic
- Food embargos
- Traffic control
- Worker safety
- Re-entry considerations

Decision Making - Sample Questions

- Who has the authority to make, implement and enforce specific decisions?
- What is the legislative or regulatory basis for that authority?
- Who needs to be included in the decision making process?
- What happens if specific organizations are unreachable due to a technology failure or critical information is lacking?

Communications

- Notifications
- Communication products
- Elected officials and senior management
- Social media
- Public messaging/guidance

Communications - Questions

- Are the right notifications going to the right people at the right time?
- Who is responsible for specific communication products?
- What redundancies exist for communication technologies and are they shared by all organizations?
- If a communication technology fails, what mechanisms exist to maintain required communication linkages?

Managing Challenges

- Emergency management best practices
- Shared and understood response structure (IMS)
- Robust and redundant communication technologies
- Critical infrastructure resiliency
- Continuity of Operations planning
- Planning and exercising

Results

- Organizations have excellent capabilities
- Good plans are in place (and being updated)
- Gaps were found in the INTERFACES!
 - Units of measurement
 - Communication products – needs and timing
 - Legislative authorities
 - Interoperability

Next Steps

- Multi-stakeholder working groups are addressing gaps at the operational and functional level
- Protocols and procedures being updated
- Exercise Unified Response May 2014
 - 3 day, BDBA
 - Multi-jurisdictional
 - Feet on the ground