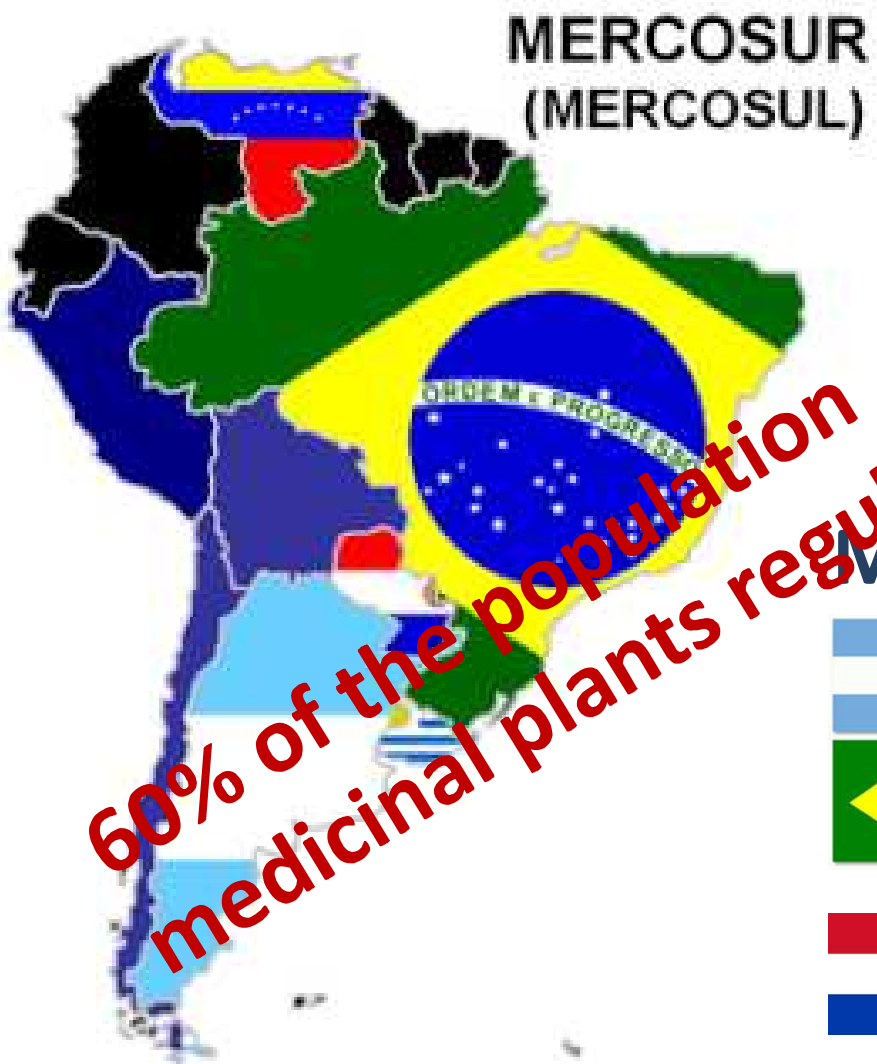


Method development for pesticide residues analysis in Herbs, to support regulatory aspects of food safety and public health within the MERCOSUR countries

Horacio Heinzen

Pharmacognosy & Natural Products
Facultad de Química. Universidad de la Republica
Montevideo, Uruguay





Mercosur population(mill)

	40
	200
	6
	3
	30

Where do the consumed medicinal plants in
MERCOSUR came from?





Medicinal plants and derivatives production

Conventional : Uses pesticides like any agricultural production

PESTICIDE RESIDUES EXPECTED

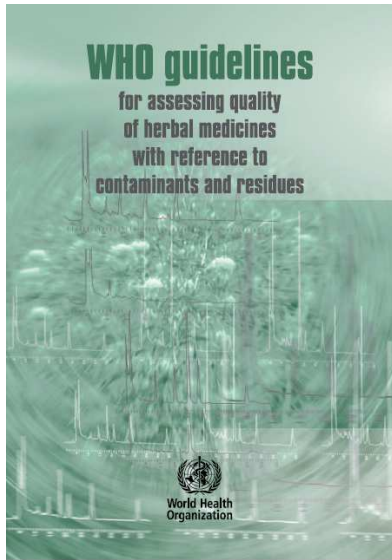
Organic/biological/ecological: No pesticides allowed, secondary metabolism enhanced

**ABSCENCE OF PESTICIDE RESIDUES MUST BE
CONFIRMED**

When pesticide are used in MAPs production?

Residues					
General classification	Group	Subgroup	Specific examples	Possible sources	Stage of production at which detectable ^a
Agrochemical residues	Pesticides	Insecticides	Carbamate, chlorinated hydrocarbons, organophosphorus	Air, soil, water, during cultivation/growth, post-harvest processing	1,2,3,4
		Herbicides	2,4-D, 2,4,5-T	Air, soil, water, during cultivation/growth, post-harvest processing	1,2,3,4
		Fungicides	Dithiocarbamate	Air, soil, water, during cultivation/growth	1,2,3,4
	Fumigants	Chemical agents	Ethylene oxide, phosphine, methyl bromide, sulfur dioxide	Post-harvest processing	2,3,4
	Disease control agents	Antiviral agents	Thiamethoxam	During cultivation	1,2,3,4
Residual solvents		Organic solvents	Acetone, methanol, ethanol, butanol	Manufacturing process	3,4

^a Stage of production at which detectable: 1, medicinal plants; 2, herbal materials; 3, herbal preparations; 4, finished herbal products.



Medicinal plants could contain pesticide residues which accumulate as a consequence of agricultural practices such as fumigations, during pre or post harvest or soil treatments.

It is strongly advised that each Medicinal Plants producer or commercial country should have at least one laboratory capable of performing these determinations

Medicinal plants could be ruled by the general specifications developed for foods, particularly those included in the ***Codex Alimentarius***

Codex Alimentarius used matched combinations pesticide-food product

Table 4. The list of approved pesticides for spices^a and their maximum residue limits (MRLs) (Codex Alimentarius Commission, 2005)^b

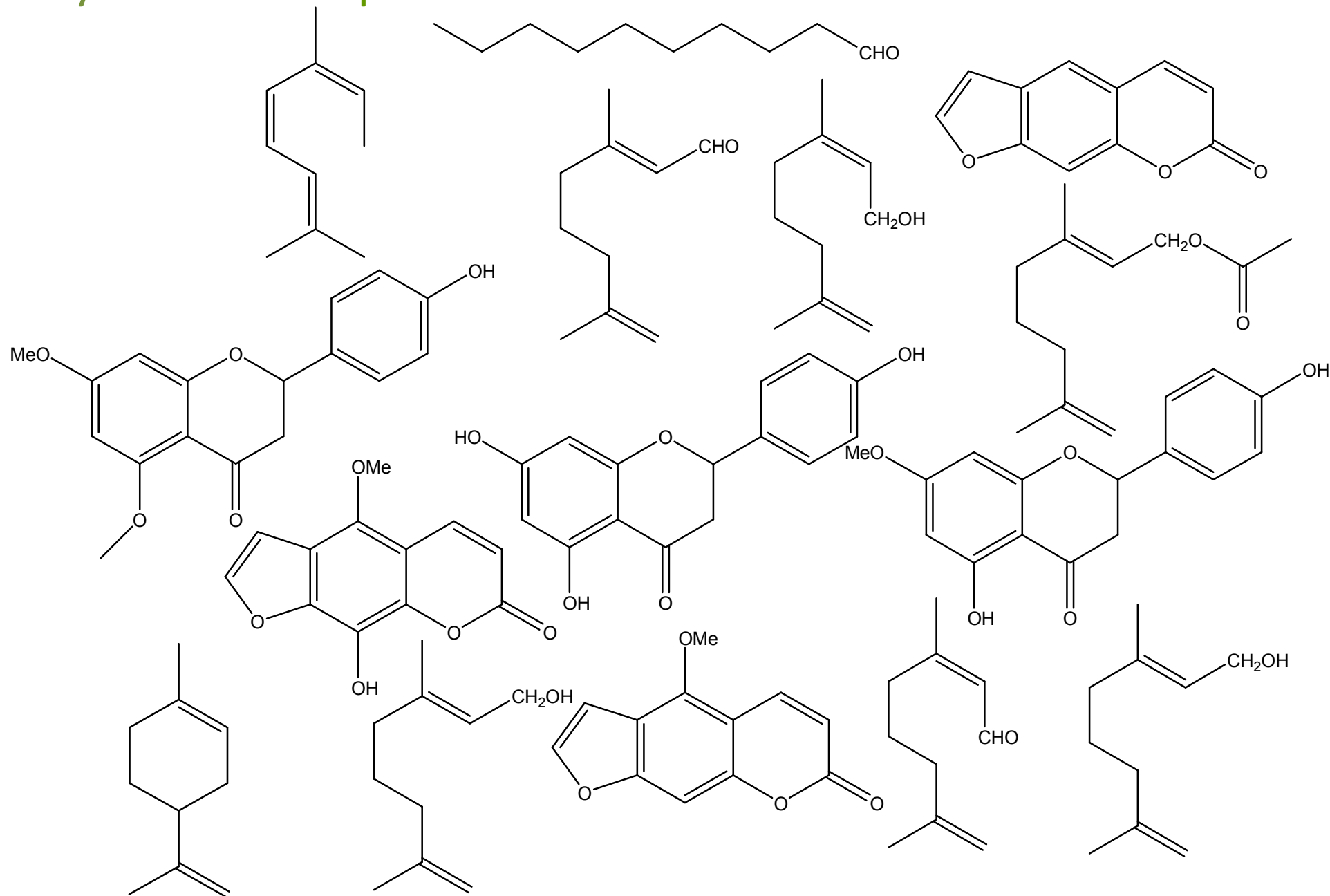
Pesticide (CCPR-number)	Group or sub-group of spices	MRL (mg/kg)
Acephate (095)	Entire group 028 ^c	0.2 (*)
Azinphos-methyl (002)	Entire group 028 ^c	0.5 (*)
Chlorpyrifos (017)	Seeds	5
	Fruits or berries	1
	Roots or rhizomes	1
Chlorpyrifos-methyl (090)	Seeds	1
	Fruits	0.3
	Roots or rhizomes	5
Cypermethrin (118)	Fruits or berries	0.1
	Roots or rhizomes	0.2
Diazinon (22)	Seeds	5
	Fruits	0.1 (*)
	Roots or rhizomes	0.5
Dichlorvos (025)	Entire group 028 ^c	0.1 (*)
Dicofol (026)	Seeds	0.05 (*)
	Fruits or berries	0.1
	Roots or rhizomes	0.1

Pesticides residues in medicinal plants

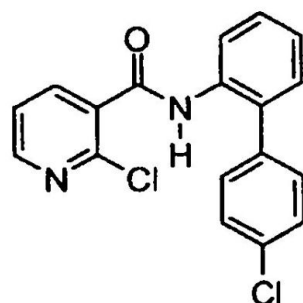
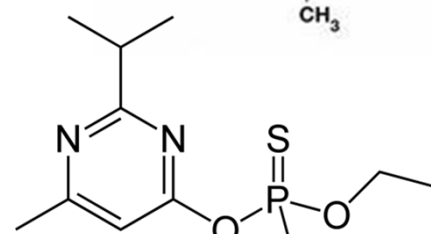
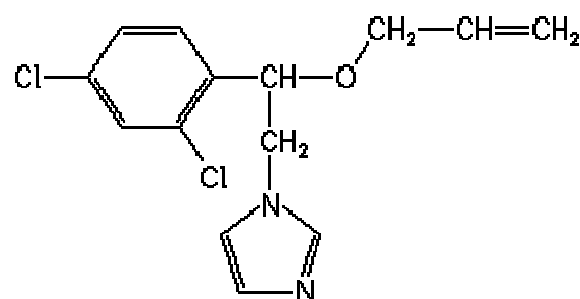
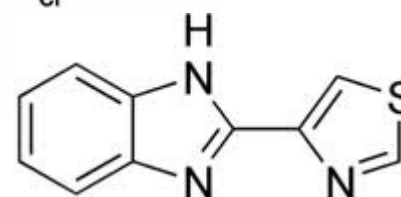
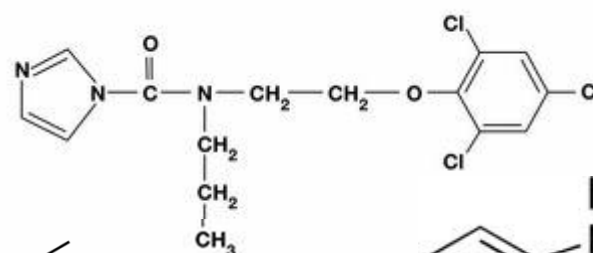
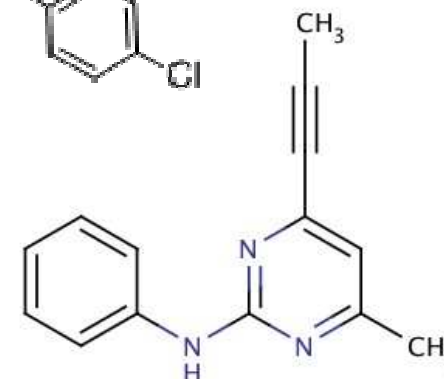
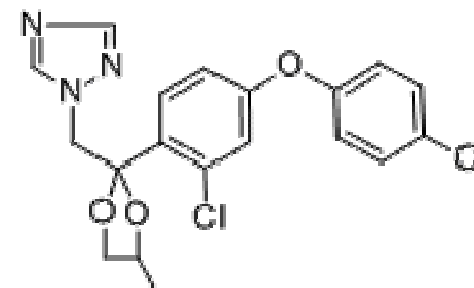
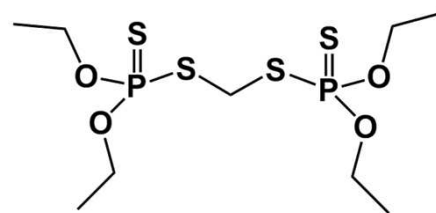
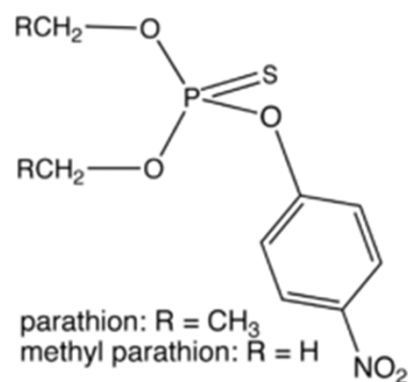
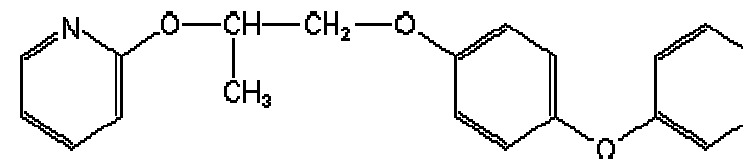
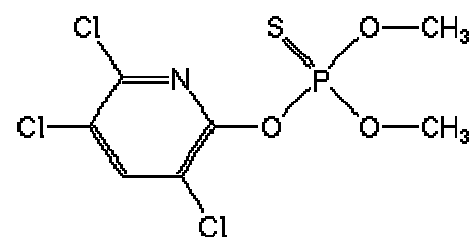
- analytical challenges:

MAPs are complex matrices containing different amounts of secondary metabolites (1-20%) with similar physicochemical properties to the most common pesticides employed for crop protection, either before or post harvest

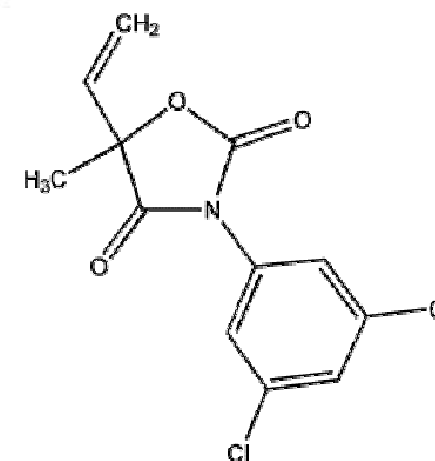
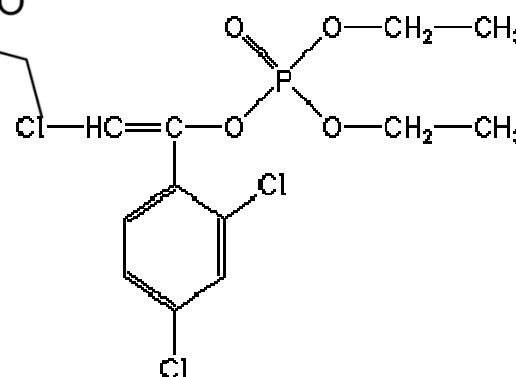
Phytochemicals present in citrus essential oils



Common pesticides employed in crop protection



(I)



WHO guidelines

for assessing quality
of herbal medicines
with reference to
contaminants and residues



MERCOSUR (MERCOSUL)



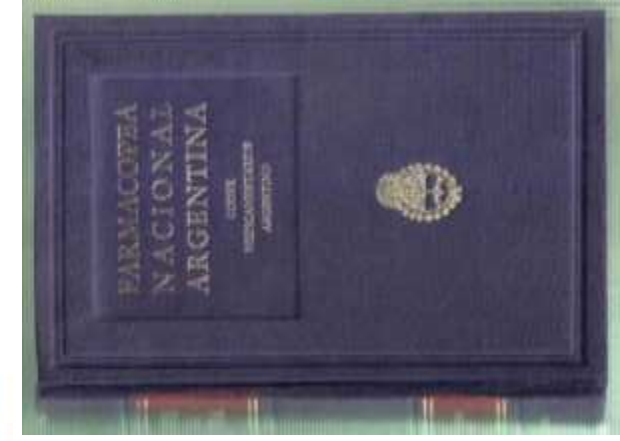
EUROPEAN FARMACOPOEIA

7.0



2008
USP
NF

The United States Pharmacopeia



Agência Nacional de Vigilância Sanitária

Farmacopeia
Brasileira

Volume 2

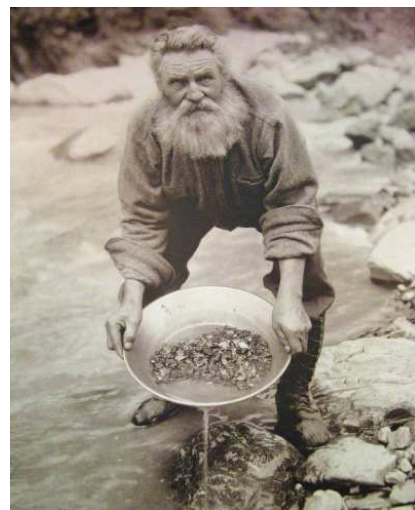
5ª edição
Brasília
2010

Characteristics of Pharmacopeical protocols

There is always a reference substance
(that is provided by the pharmacopeia's
board)

...what about for pesticides in natural
products or medicinal plants?

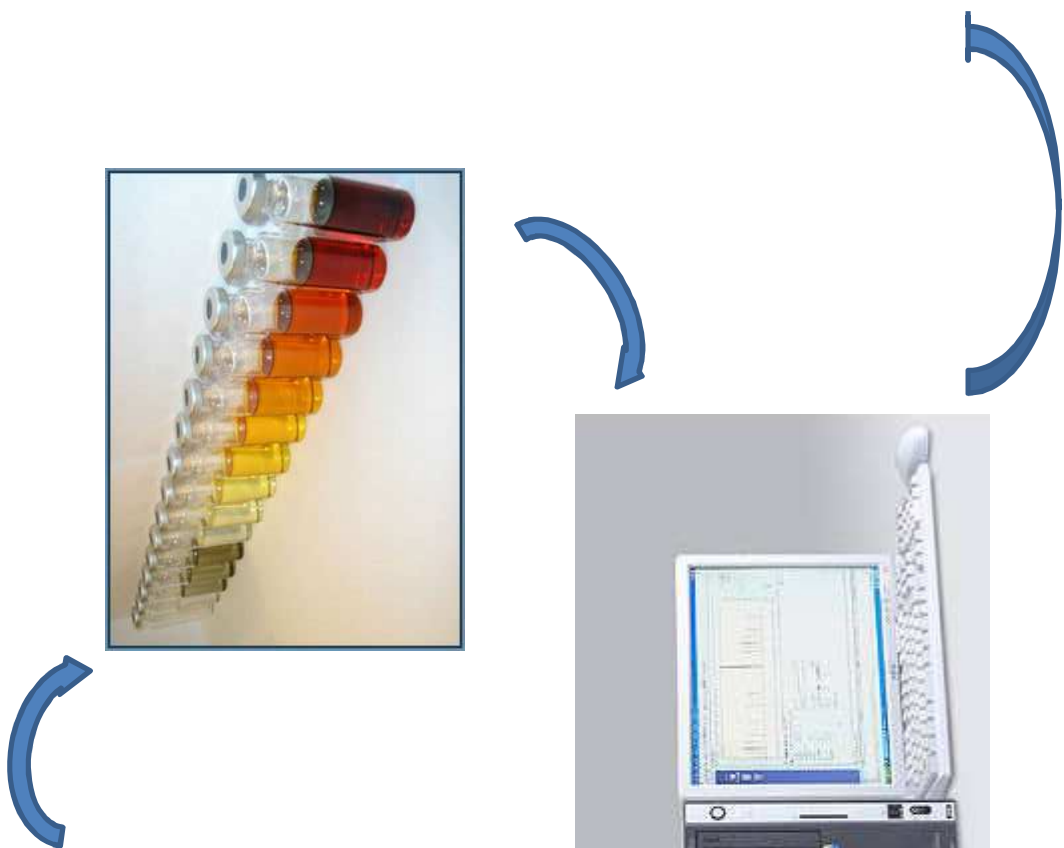
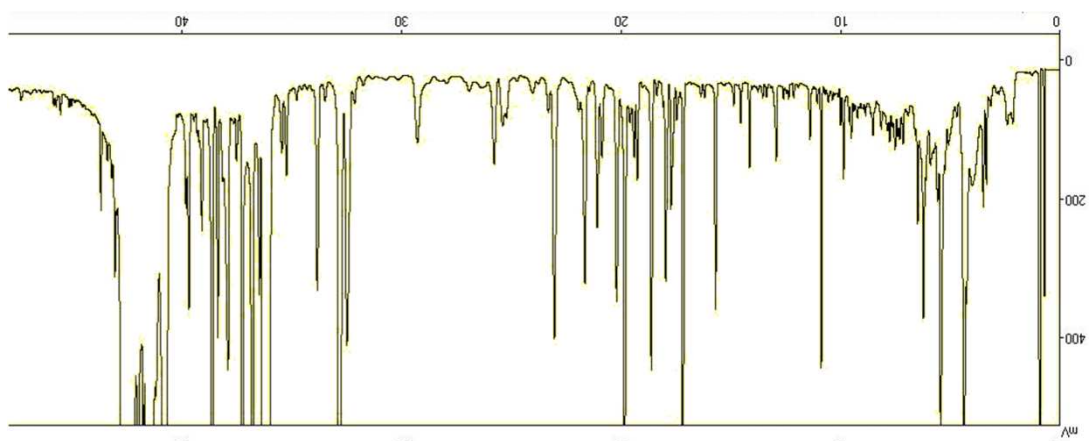




Exhaustive sample preparation for the pesticide residue analysis was the solution



**the concept :
Pesticide residues is a
group of compounds
to be determined by a
general procedure, as
ashes or moisture**



Matrix effects

+





Calendula



marcela



boldo



hiperico

2g sample +10 mL. H₂O + 10 mL. AcOEt

1.5 g Na Cl + 8g MgSO₄

No clean up

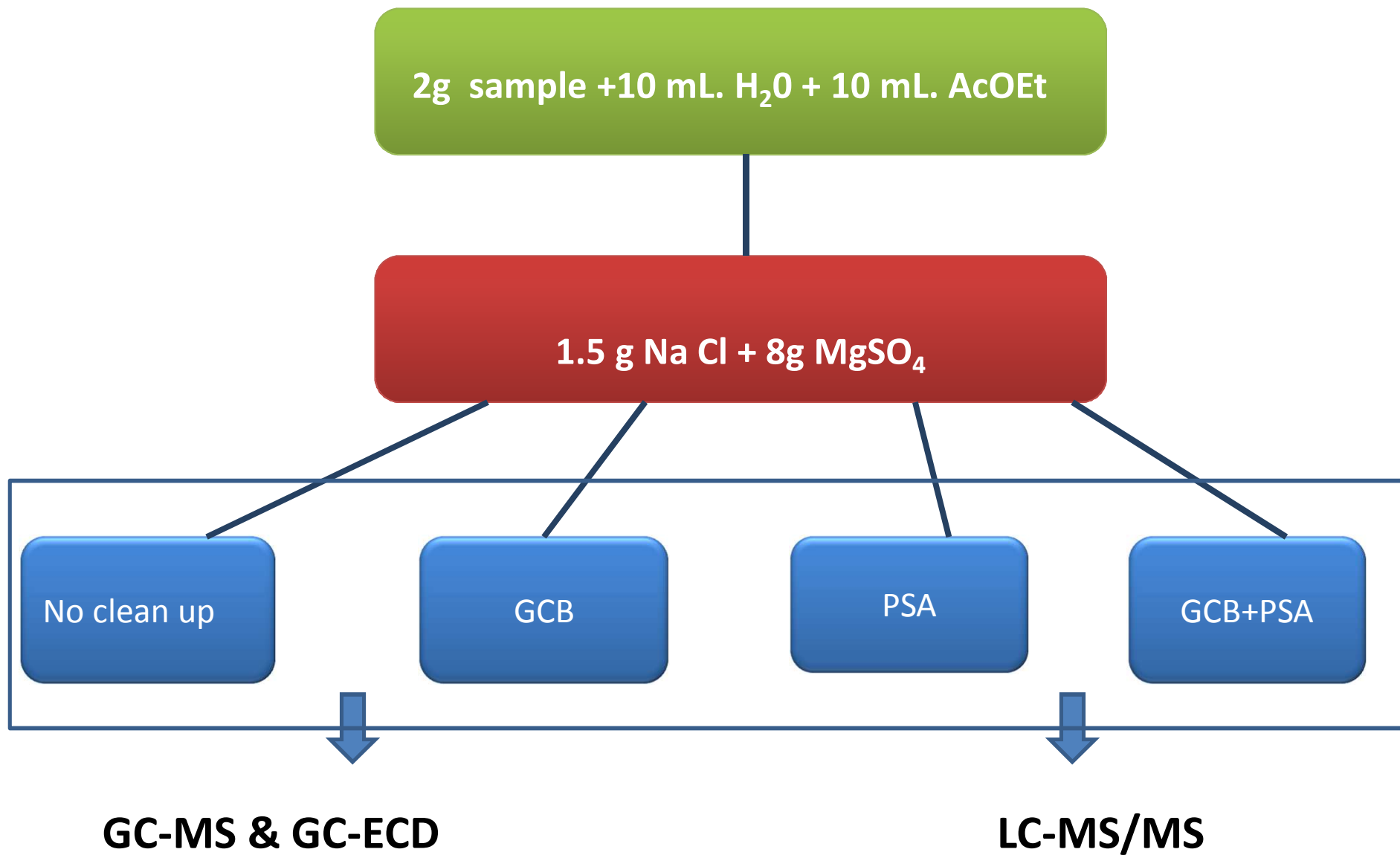
GCB

PSA

GCB+PSA

GC-MS & GC-ECD

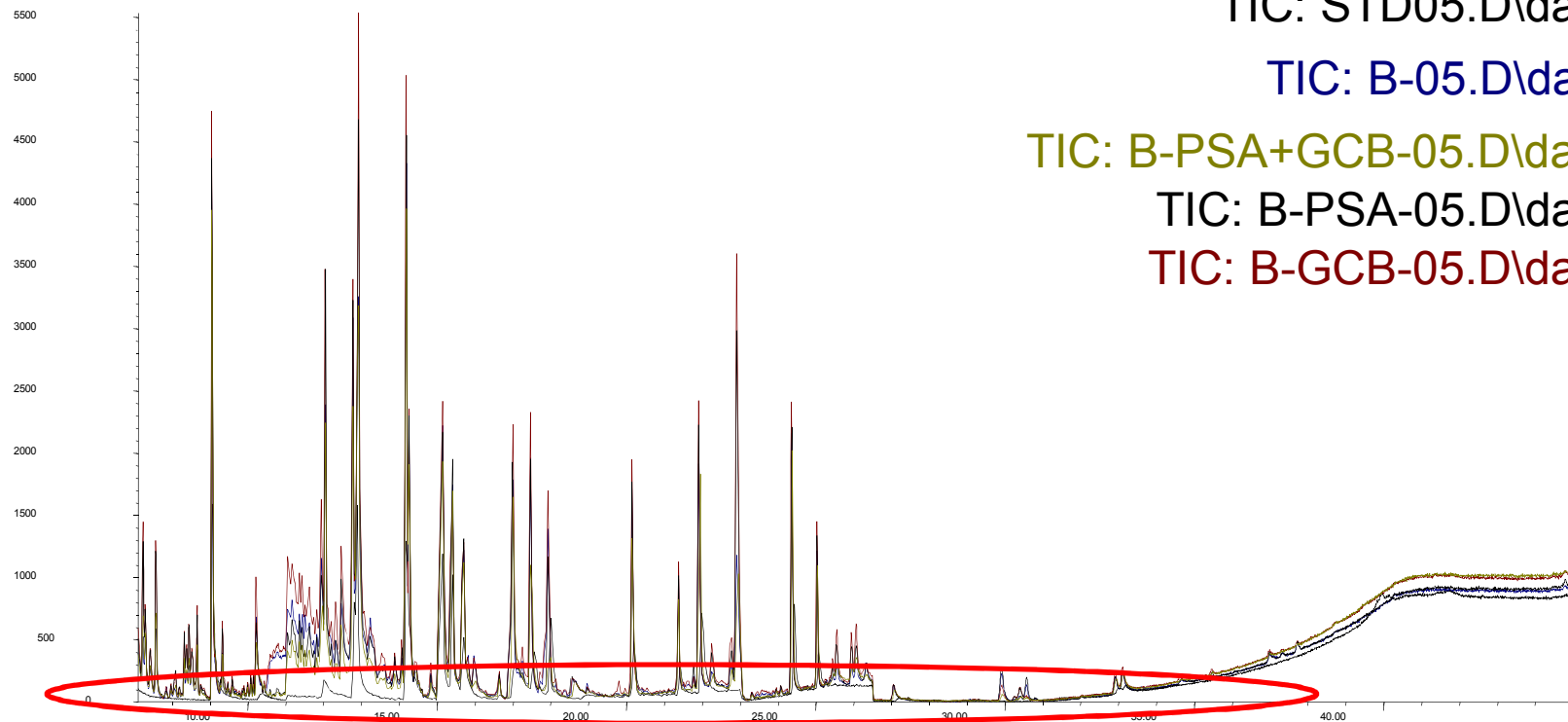
LC-MS/MS



Boldo



Abundance



Time-->

TIC: STD05.D\data.ms

TIC: B-05.D\data.ms

TIC: B-PSA+GCB-05.D\data.ms

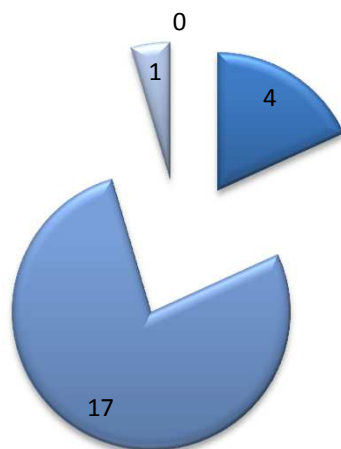
TIC: B-PSA-05.D\data.ms

TIC: B-GCB-05.D\data.ms

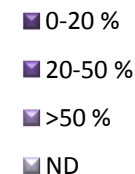
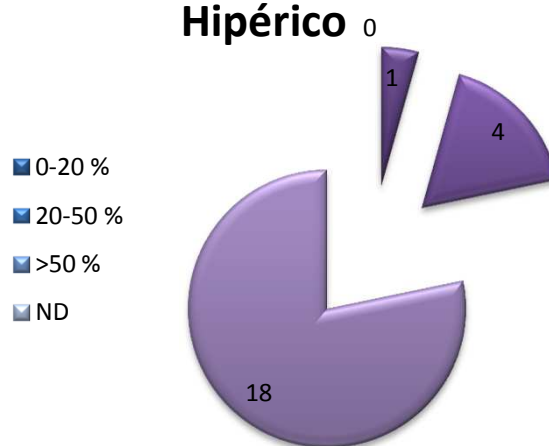
Matrix effect in GC-MS for some common medicinal plants



Boldo



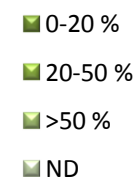
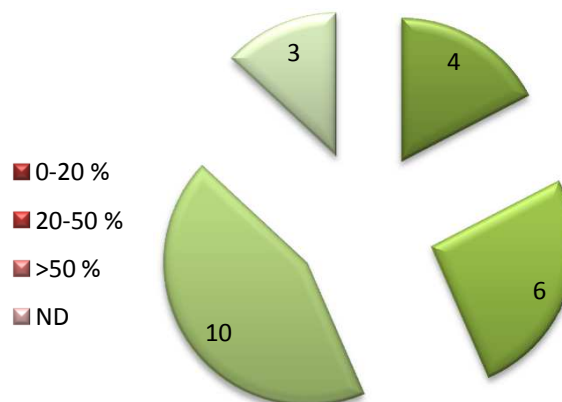
Hipérico



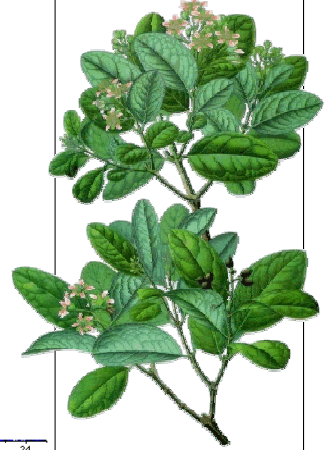
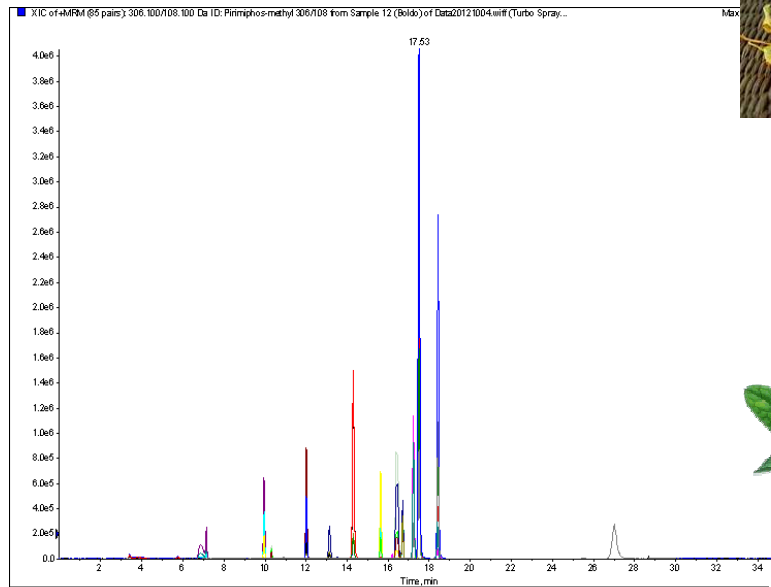
Caléndula



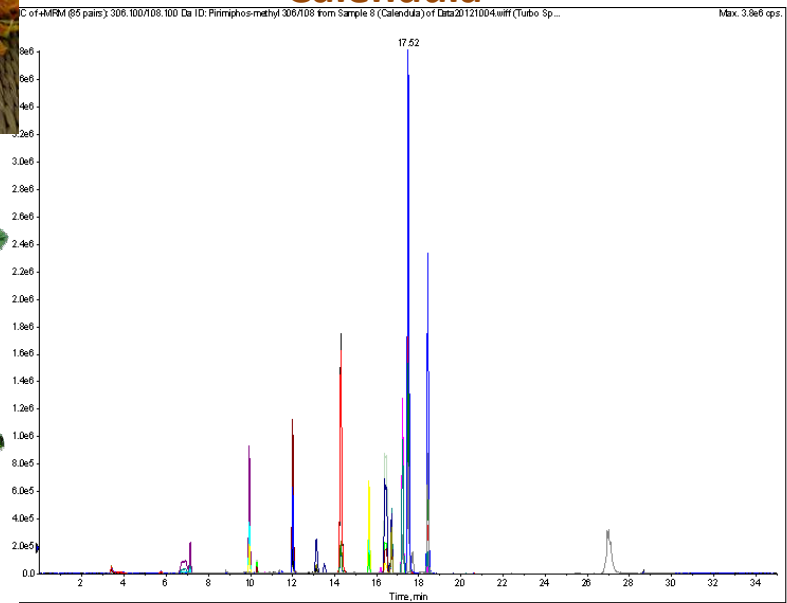
Marcela



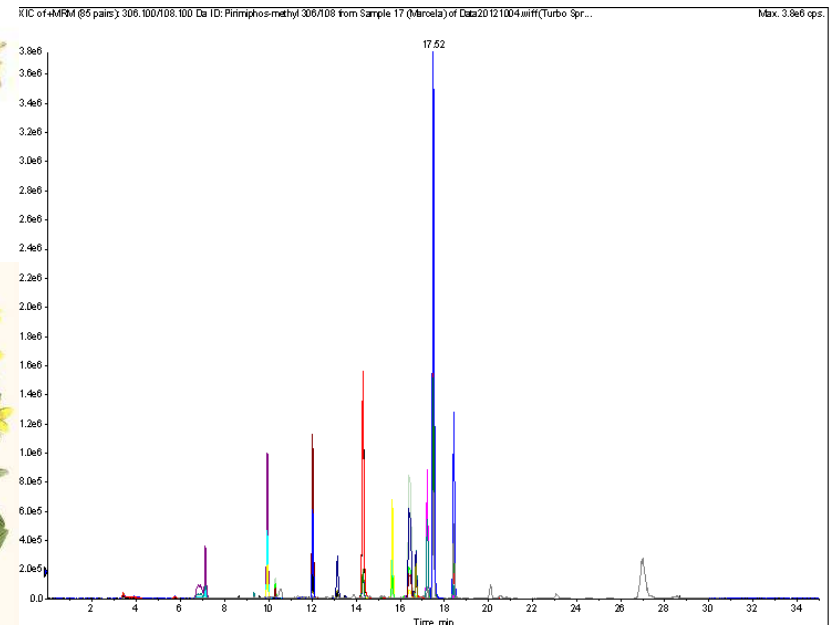
Boldo



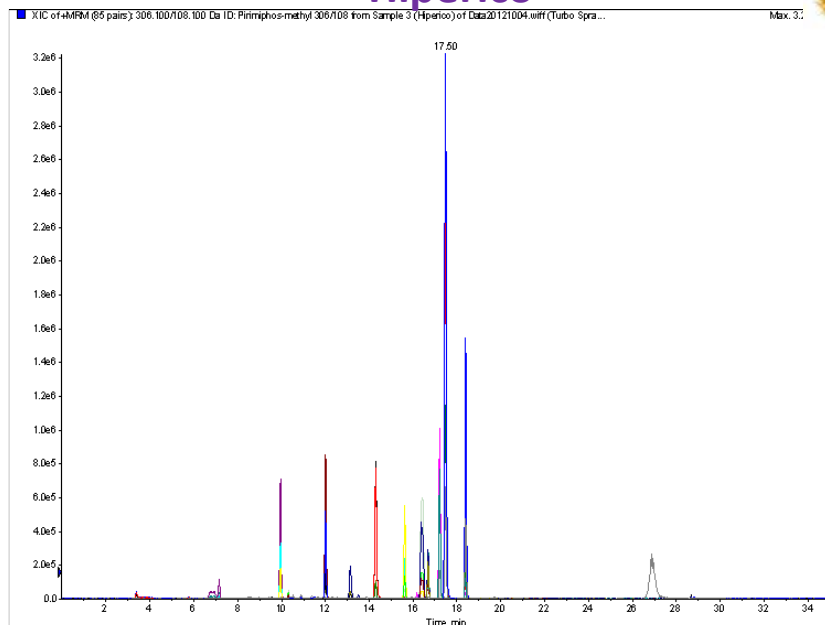
Calendula



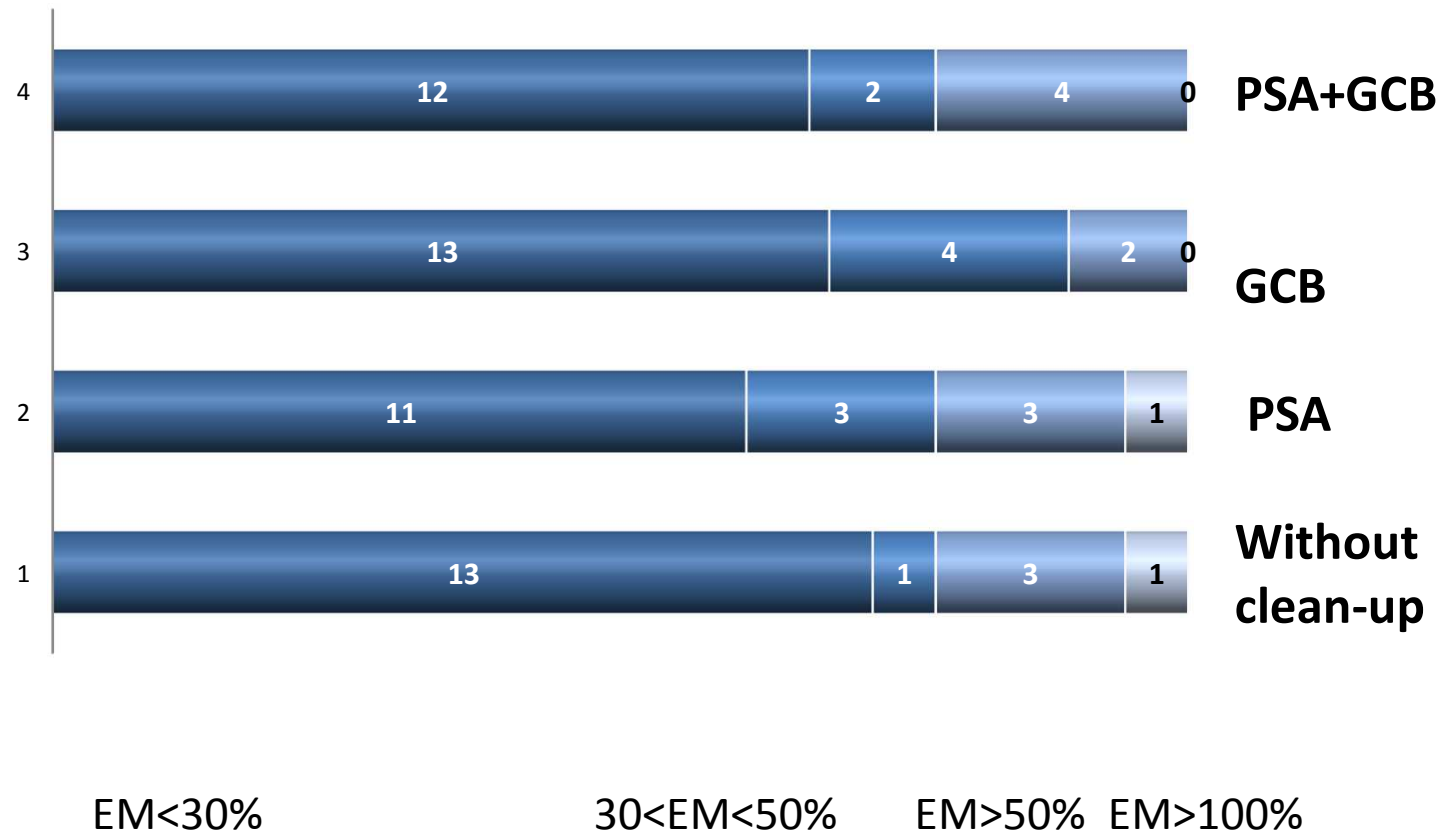
Marcela



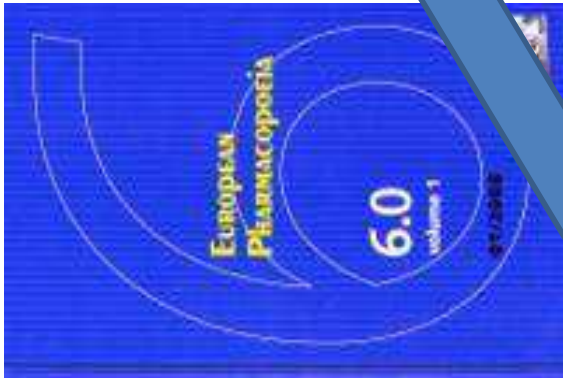
Hipérico



Boldo: Matrix Effect LC-MS/MS



IS TPP



Introduce into the flask the prescribed quantity of the drug and continue the distillation as described above for the time and at the rate prescribed. Stop the heating and after 10 min

MR_{LH} – maximum residue limit of the pesticide in the herbal drug as given in Table 2.8.13-1 or in EU texts or calculated using the expression

A NEW CONCEPT

07/2008:20813

2.8.13. PESTICIDE RESIDUES

Definition. For the purposes of the Pharmacopoeia, a pesticide is any substance or mixture of substances intended for preventing, destroying or controlling any pest, unwanted species of plants or animals causing harm during or otherwise interfering with the production, processing, storage, transport or marketing of herbal drugs. The item includes substances intended for use as growth-regulators, defoliants or desiccants and any substance applied to crops, either before or after harvest, to protect the commodity from deterioration during storage and transport. Pesticide residues can be present and are controlled in herbal drugs and herbal drug preparations.

Limits. Unless otherwise indicated in the monograph, the herbal drug to be examined at least complies with the limits indicated in Table 2.8.13-1. The limits applying to pesticides that are not listed in Table 2.8.13-1 and whose presence is suspected for any reason comply with the limits (levels) cross referred to by Regulation (EC) No. 396/2005, including annexes and successive updates. Limits for pesticides that are not listed in Table 2.8.13-1 nor in European Union texts are calculated using the following expression:

$$\frac{ADI \times M}{MDD_{HP} \times 100}$$

ADI – acceptable daily intake, as published by FAO-WHO, in milligrams per kilogram of body mass,

M – body mass in kilograms (60 kg),

MDD_{HP} – daily dose of the herbal drug, in kilograms.

The limits for pesticides in herbal drug preparations are calculated using the following expressions:

IF $DR \leq 10$:

$$MR_{LH} \times DR \times 10$$

IF $DR > 10$:

$$\frac{ADI \times M}{MDD_{HP} \times 100}$$

Substance	Limit (mg/kg)
Acetate	0.1
Alachlor	0.05
Aldrin and dieldrin (sum of)	0.05
Azinphos-ethyl	0.1
Azinphos-methyl	1
Bromide, inorganic (calculated as bromide ion)	50
Bromophos-ethyl	0.05
Bromophos-methyl	0.05
Bromopropylate	2
Chlorfenc (sum of cly, benz- and cyclohexane)	0.05
Chlorfenvinphos	0.5
Chlorpyrifos-ethyl	0.1
Chlorpyrifos-methyl	0.1
Chloral-ethyl	0.01
Cyfluthrin (sum of)	0.1
Cyhalothrin	1
Cypermethrin and isomers (sum of)	1
DDT (sum of o,p'-DDE, p,p'-DDE, o,p'-DDT, p,p'-DDT, o,p'-DDE and p,p'-DDE)	1
Deltamethrin	0.5
Diazinon	0.5
Dichloroquid	0.1
Dichlorvos	1
Dicofol	0.5
Dimethoate and omethoate (sum of)	0.1
Dithiocarbamates (expressed as CS ₂)	2
Endosulfan (sum of isomers and endosulfan sulfate)	2
Endrin	0.05
Ethion	2
Ethionphos	0.05
Fenchlorophos (sum of fenchlorophos and fenchlorophos-oxon)	0.1
Fenitrothion	0.5
Permethrin	0.05
Fenvalerate (sum of fenvalerate, fenvalerate-oxon, fenvalerate-oxon-sulfonate and fenvalerate-sulfonate)	0.05

Substance	Limit (mg/kg)
Fenitrothion (sum of fenitrothion, fenitrothion-oxon, fenitrothion-oxon-sulfonate, fenitrothion-sulfonate and fenitrothion-sulfonate)	0.05
Fenvalerate	1.5
Flucythrinate	0.05
γ-Fluvalinate	0.05
Fonophos	0.05
Heptachlor (sum of heptachlor, cis-heptachloroepoxide and trans-heptachloroepoxide)	0.05
Hexachlorbenzene	0.1
Hexachlorocyclohexane (sum of isomers α, β, γ, δ and ε)	0.2
Lindan (γ-hexachlorocyclohexane)	0.6
Malathion and malaoxon (sum of)	1
Necarbox	0.05
Methacrophos	0.05
Methamidophos	0.05
Methidathion	0.2
Methoxychlor	0.05
Mirex	0.01
Monocrotophos	0.1
Parathion-ethyl and Paraoxon-ethyl (sum of)	0.5
Parathion-methyl and Paraoxon-methyl (sum of)	0.2
Pendimethalin	0.1
Pentachloronitro	0.01
Permethrin and isomers (sum of)	1
Phosalone	0.1
Phosmet	0.05
Picrophenyl butoxide	2
Phenylphosphoryl	0.05
Phenylphosphoryl (sum of phenylphosphoryl and N-decylphenylphosphoryl)	4
Procydionone	0.1
Profenophos	0.1
Prothiofos	0.05
Pyrethrum (sum of cinerin I, cinerin II, jasmolin I, jasmolin II, pyrethrin I and pyrethrin II)	2
Quinalphos	0.05
Quinone (sum of quinone, pentachloroquinone and methyl pentachlorophenyl sulfide)	1
SC-411	0.02
Tecnazene	0.05
Tetraclon	0.2
Vindoxin	0.4

Sampling of herbal drugs. Sampling is done according to the general chapter 2.8.20. Herbal drugs: sampling and sample preparation.

Qualitative and quantitative analysis of pesticide residues. The analytical procedures used are validated (e.g. according to Document N° SANCO/10232/2006). In particular, they satisfy the following criteria:

- the chosen method, especially the purification steps, is suitable for the combination pesticide residue/substance to be examined, and not susceptible to interference from co-extractives;

- natural occurrence of some constituents is considered in the interpretation of results (e.g. disulfide from Cruciferales);
- the concentration of test and reference solutions and the setting of the apparatus are such that the responses used for quantification of the pesticide residues are within the dynamic range of the detector. Test solutions containing pesticide residues at a level outside the dynamic range, may be diluted within the calibration range, provided that the concentration of the matrix in the solution is adjusted in the case where the calibration solutions must be matrix-matched;
- between 70 per cent to 110 per cent of each pesticide is recovered;
- repeatability of the method: RSD is not greater than the values indicated in Table 2.8.13-2;
- reproducibility of the method: RSD is not greater than the values indicated in Table 2.8.13-2.

Table 2.8.13-2

Concentration range of the pesticide (mg/kg)	Repeatability (RSD) (per cent)	Reproducibility (RSD) (per cent)
0.001 - 0.01	20	60
> 0.01 - 0.1	20	40
> 0.1 - 1	25	30
> 1	30	20

01/2008:20814

2.8.14. DETERMINATION OF TANNINS IN HERBAL DRUGS

Carry out all the extraction and dilution operations protected from light.

In the case of a herbal drug or a dry extract, to the stated amount of the powdered drug (100) (2.8.12) or the extract in a 250 mL round-bottomed flask add 150 mL of water *R*. Heat on a water-bath for 30 min. Cool under running water and transfer quantitatively to a 250 mL volumetric flask. Rinse the round-bottomed flask and collect the washings in the volumetric flask, then dilute to 250.0 mL with water *R*. Allow the solids to settle and filter the liquid through a filter paper 125 mm in diameter. Discard the first 50 mL of the filtrate.

In the case of a liquid extract or a tincture, dilute the stated amount of the liquid extract or tincture to 250.0 mL with water *R*. Filter the mixture through a filter paper 125 mm in diameter. Discard the first 50 mL of the filtrate.

Total polyphenols. Dilute 5.0 mL of the filtrate to 25.0 mL with water *R*. Mix 2.0 mL of this solution with 1.0 mL of phosphomolybdotungstic reagent *R* and 10.0 mL of water *R* and dilute to 25.0 mL with a 290 g/L solution of sodium carbonate *R*. After 30 min measure the absorbance (2.2.25) at 760 nm (A_1), using water *R* as the compensation liquid.

Polyphenols not adsorbed by hide powder. To 10.0 mL of the filtrate, add 0.10 g of hide powder CRS and shake vigorously for 60 min. Filter and dilute 5.0 mL of the filtrate to 25.0 mL with water *R*. Mix 2.0 mL of this solution with 1.0 mL of phosphomolybdotungstic reagent *R* and 10.0 mL of water *R* and dilute to 25.0 mL with a 290 g/L solution of sodium carbonate *R*. After 30 min measure the absorbance (2.2.25) at 760 nm (A_2), using water *R* as the compensation liquid.

Standard. Dissolve immediately before use 50.0 mg of pyrogallol *R* in water *R* and dilute to 100.0 mL with the same solvent. Dilute 5.0 mL of the solution to 100.0 mL with water *R*. Mix 2.0 mL of this solution with 1.0 mL of phosphomolybdotungstic reagent *R* and 10.0 mL of water *R* and dilute to 25.0 mL with a 290 g/L solution of sodium carbonate *R*. After 30 min measure the absorbance (2.2.25) at 760 nm (A_3), using water *R* as the compensation liquid.

European Pharmacopea 7-8 Ed.

Restricted
pesticides
list

Analytical
Criteria
following
SANCO
Document

Not
included
Pesticides
MRL
0.01 mg/Kg

How is the fitting between the pharmacopeia & the food regulation?

The case of Ginger

Pesticides	EU-MRLs		EUPharm
Acephate	0.20	✖	0.10
Alachlor	0.01	✖	0.05
Aldrin & Dieldrin	0.10	✖	0.25
Azimphos ethyl	0.05	✖	0.10
Azimphos methyl	0.5	✖	1.00
Azoxystrobin	0.1		

EUMRLs

10 more pesticides with MRL >0.01 begining with a



What is needed for registration?

Toxicological evaluation of the pesticide residues in herbs

Validated analytical procedure for the specific medicinal plant



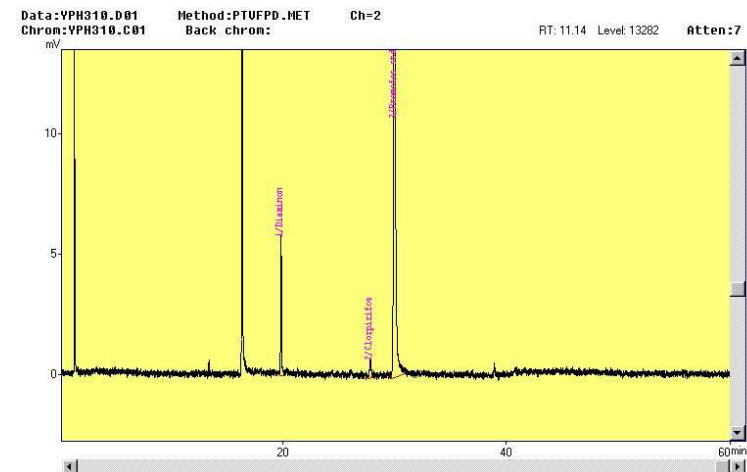
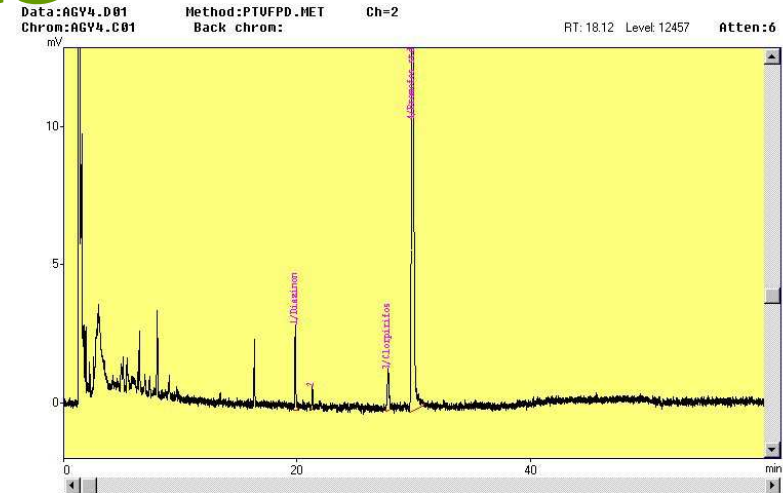
Yerba mate

- Daily intake for uruguayan population of 21.5 g,

Argentina 18.5g

Brasil 5.3g

* That means aprox 8Kg/person /y

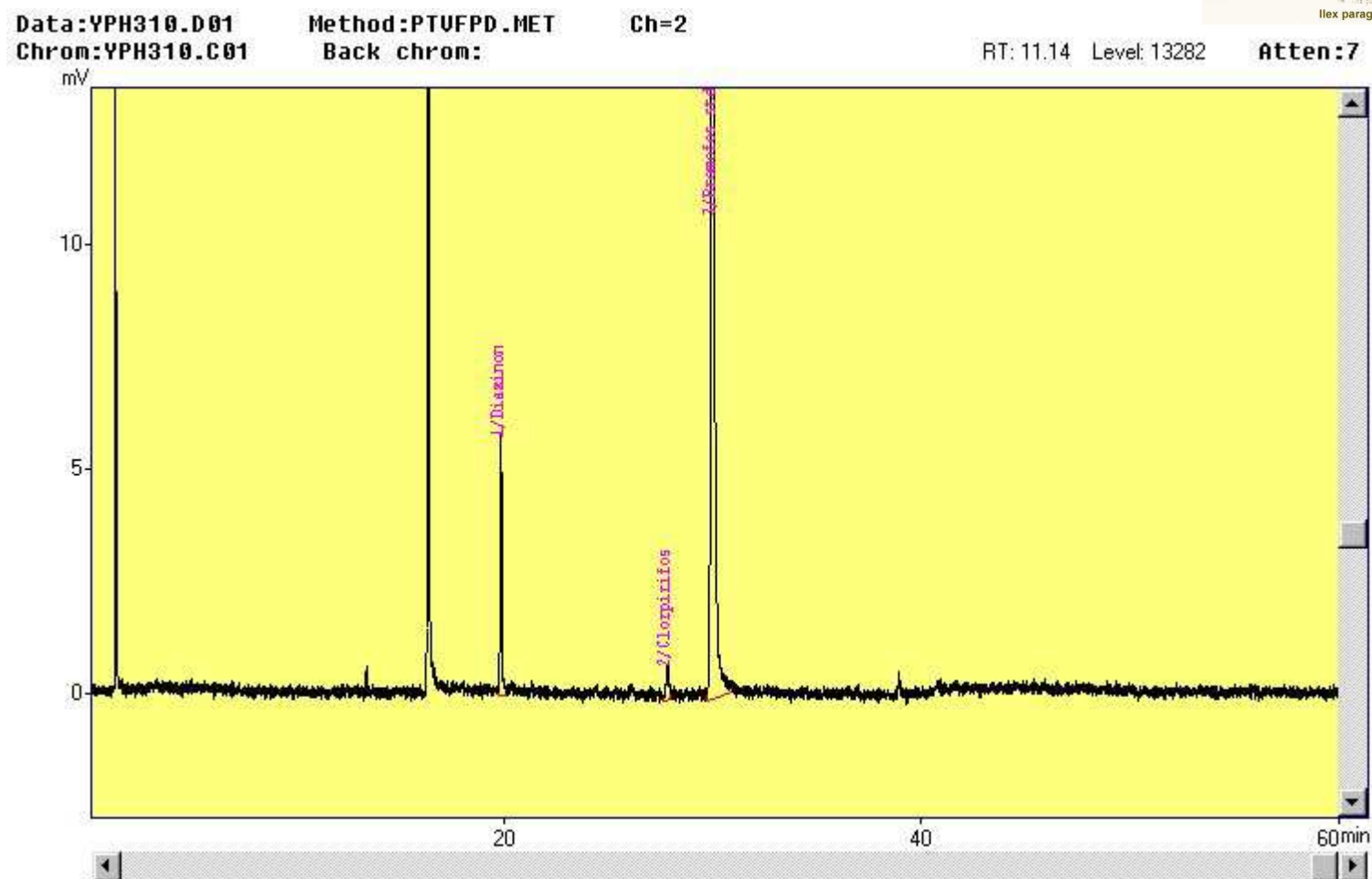


FAO Stat, 2007

Yerba mate

Mini Luke Extract

1)Acetone 2) Clean up: Extraction (DCM;Hex 1:1), Florisil



Pesticide residues in yerba mate

30% of the samples do not have any pesticide residue

Sample	ΣPesticides (ppb, µg/Kg)
1	66
2	16
3	10
4	5
5	105

Diazinon

Metidathion

Fenitrothion

Endosulfan

Endoslfan sulphate

Ethion

Malathion

Parathion(ethyl/methyl)

Chlorpirifos

Cypermethrin

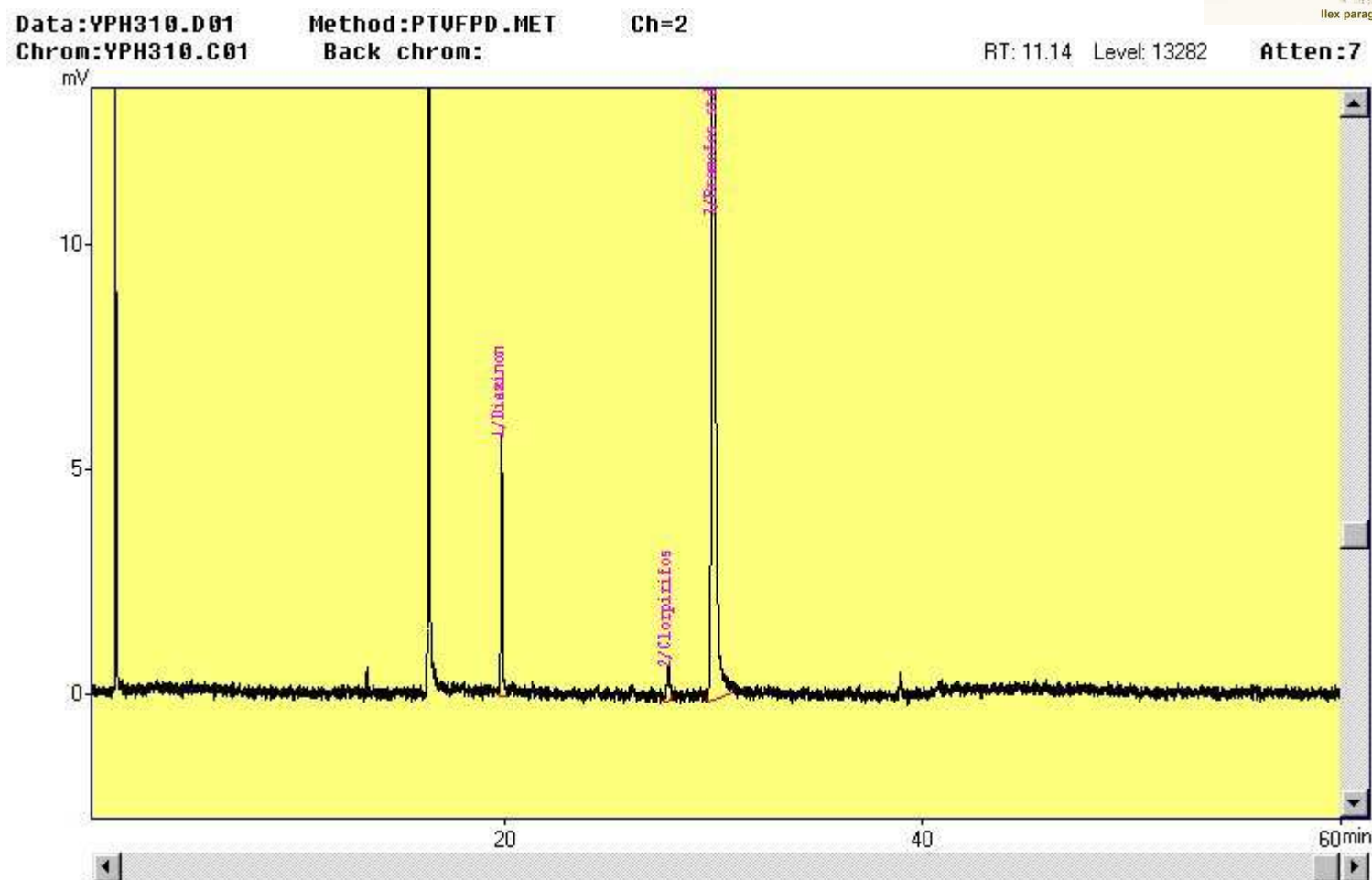
Deltamethrin



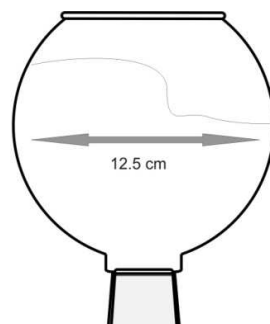
Yerba mate

Mini Luke Extract

1) Acetone 2) Clean up: DCM; Hex 1:1 extr., Florisil



Transference of pesticide residues to mate brew



- Pesticide Spiked Yerba mate

Fortified



Experimental design

	Recuperación (%)	DSR (%)	GC-FPD	GC-ECD	T _{R,R}
(Z+E)	89,4	9,2	†		1,07
Clorfe					
nvinfos					
Clorpirifos	101,1	4,7	†		0,98
Clorpirifos-metil	83,4	7,1	†		0,88
Coumafos	78,2	7,3	†		1,41
λ-Cihalotrina	124,5	22,8			1,48/1,52
Cipentmetrina	140,2	25,7			1,77/1,78
Deltametrina	178,3	18,4			1,86/1,88
Diazinon	84,2	14,3	†		0,78
Diclofention	94,3	2,2	†		0,91
Dimetoato	64,2	15,6			0,80
α-B Endosulfan	112,5	14,2			1,04/1,43
Etion	84,5	2,4	†		1,24
Fenvalerato	116,3	14,7		†	1,83/1,84
Malation	83,4	7,1	†		0,97
Metidatin	128,2	14,7	†		1,11
Paration-metil	118,2	17,6	†		0,93
Pirimifos-metil	87,6	13,2	†		0,94
Propetamfos	74,3	8,1	†		0,85
τ-Fluvalinato	105,7	13,2		†	1,85/1,85

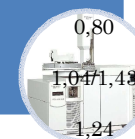
- Infusión collection

Simulation of mate drinking



- L-L (H₂O:CH₂Cl₂) y SPE

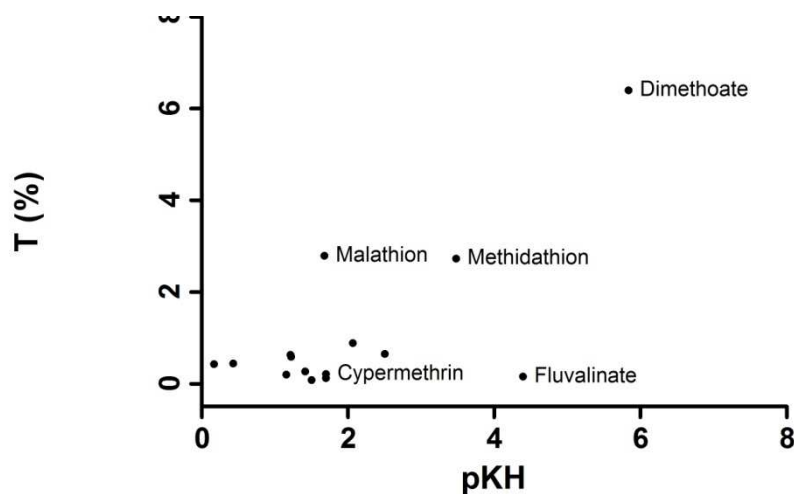
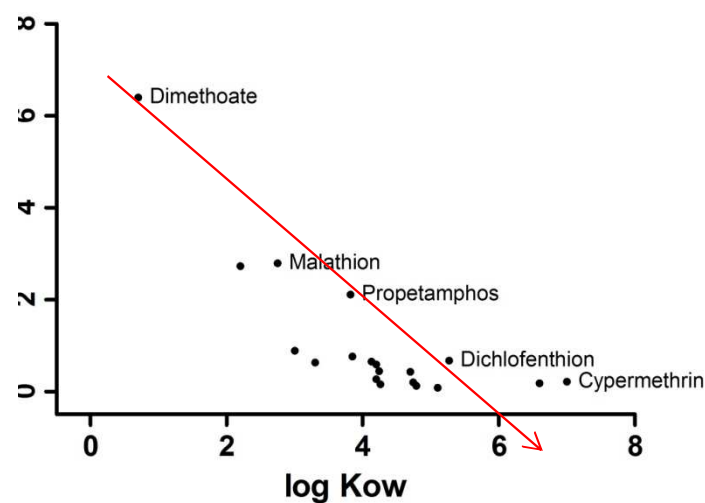
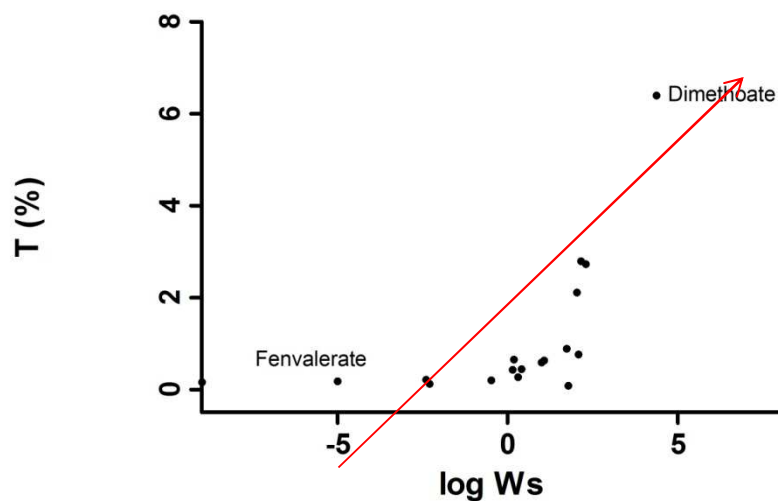
Análisis GC-ECD/FPD





Transference of pesticide residues to mate brew

Transference (T(%)) vs physicochemical properties



$$T \propto W_s$$

$$T \propto 1/K_{ow}$$

$$T \propto 1/H?$$



Transference to the brew & ARLs

Pesticida	T (%)	ADI	DSR (%)	ARLs Estimados
		(mg/kg pc)*		(mg/kg)
(Z+E) Clorfeninfos	0,76		18,6	
Clorpirifos	0,44		6,9	
(Z+E) Clorfeninfos	0,0005		0,0081	
Clorpirifos-metil	0,44		5,8	0,0921
Clorpirifos	0,0100			
Propetamfos	0,65		17,7	0,0943
Clorpirifos-metil	0,0100			
λ-Cihalotrina	0,12	0,0350	18,2	0,4875
Coumatos				
Cipermetrina	0,21	0,0020	24,3	0,0051
λ-Cihalotrina				
Deltametrina	0,08	0,0500	15,4	0,2250
Cipermetrina				
Diazinon	0,63	0,0100	18,3	0,0171
Deltametrina				
Diclofention	0,67	0,0002	4,0	0,0027
Diazinon				
Dimetoato	6,40	—	21,7	—
Diclofention				
γ-B-Endosulfan	0,20	0,0020	24,2	0,2743
Dimetoato				
γ-B-Endosulfan	0,20	0,0060	5,4	0,0257
Endosulfan				
Etionvalerato	0,18	0,0020	11,3	0,0116
Endosulfan				
Metidato	2,70	0,0200	2,3	0,0771
Etionvalerato				
Metidato	2,70	0,0300	4,0	17,936
Metidato				
Metidato-metil	0,89	0,0010	8,7	0,0585
Metidato				
Paration-metil	0,0030			0,0572
Pirimifos-metil	0,59		6,1	
Pirimifos-metil	0,0300			0,3793
Propetamfos	2,11		6,8	
Propetamfos	—			—
τ-Fluvalinato	0,16		18,3	
τ-Fluvalinato	0,0100			0,0343

$$ARL = \frac{ADI \times E \times P}{100 \times MDI}$$

ARL= Acceptable residue leve(mg/kg vegetal material)

ADI= Accepted Daily Intake (mg/kg bw)

E= transference factor the infusion

MDI= Average intake of the plant material(kg)

P= Body weight (kg), 60 kg

Maximum limit of pesticide residues for medicinal plant materials. Quality control methods for medicinal plant materials. World Health Organization, Geneva, 1998, 54-55

Final objective

To estimate the total pesticide daily intake

$$MTDI = \sum MRL_i \times F_i$$

MTDI Maximal Theoretical Daily Ingest

F_i National commodity consum per person (Kg)

What is needed for registration?

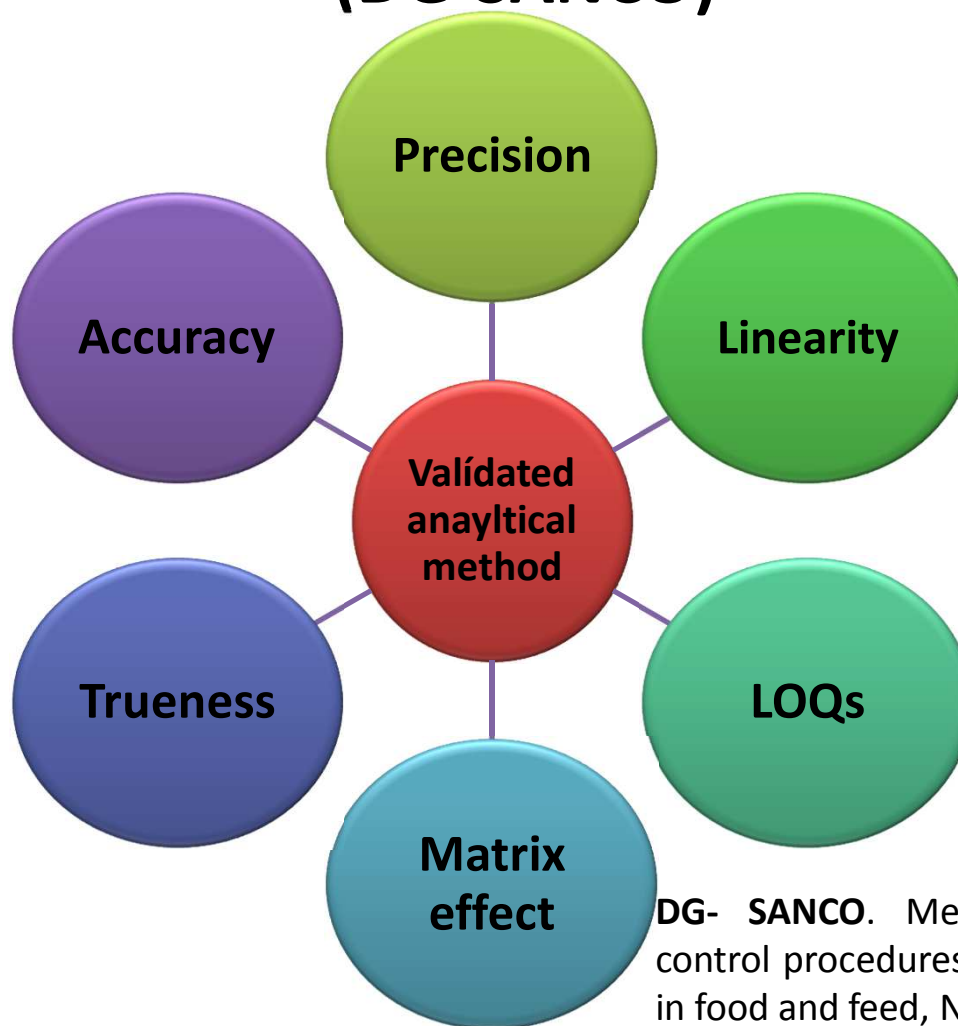
Toxicological evaluation of the pesticide residues in herbs

Validated analytical procedure for the specific medicinal plant

Validation parameters

Directorate General for Health & Consumers

(DG-SANCO)



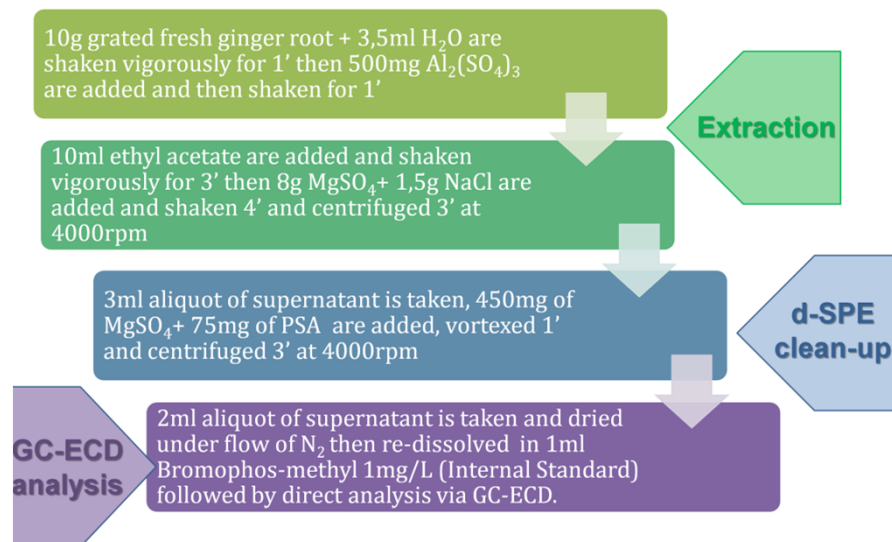
DG- SANCO. Method validation and quality control procedures for pesticide residue analysis in food and feed, No. SANCO/12495/2011³⁸

Why to look after organochlorines?

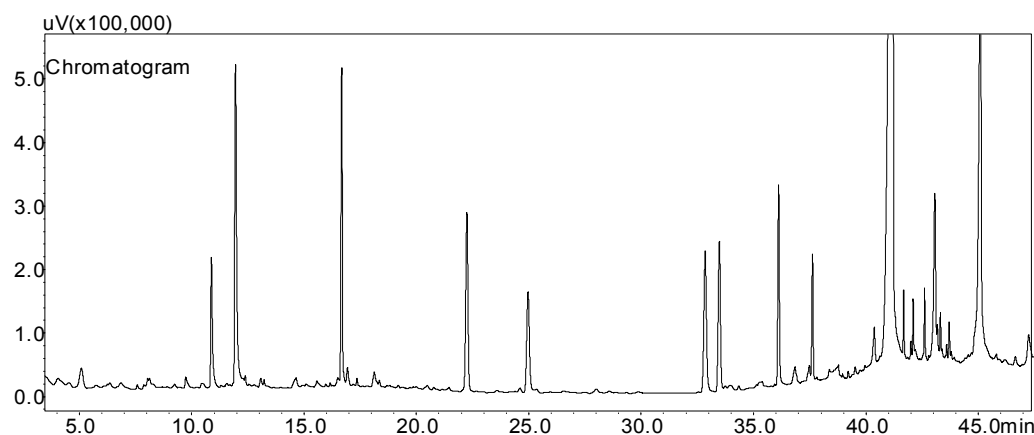
**OC are persistent compounds in soils, can
contaminate plants growing in such soils, most
dramatically rhizomes or roots .**



How to look after organochlorines?

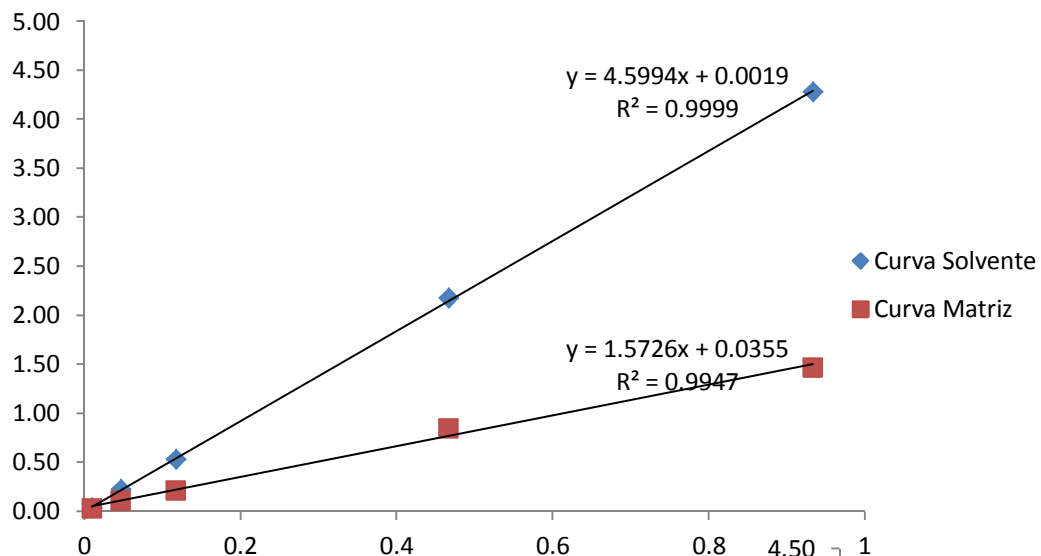


PESTICIDE	250 µg/L		125 µg/L		62,5 µg/L	
	R(%)	RSD(%)	R(%)	RSD(%)	R(%)	RSD(%)
Lindane	79,0	6,7	77,0	3,5	74,9	6,5
Aldrin	100,6	7,7	106,4	7,3	100,4	9,1
Dieldrin	82,5	4,3	94,2	5,4	83,4	12,8
p,p'-DDE	105,4	14,4	95,8	13,3	107,9	7,5
p,p'-DDD	96,5	11,4	89,1	6,3	98,2	12,9
p,p'-DDT	94,0	8,9	95,2	4,6	84,4	4,9

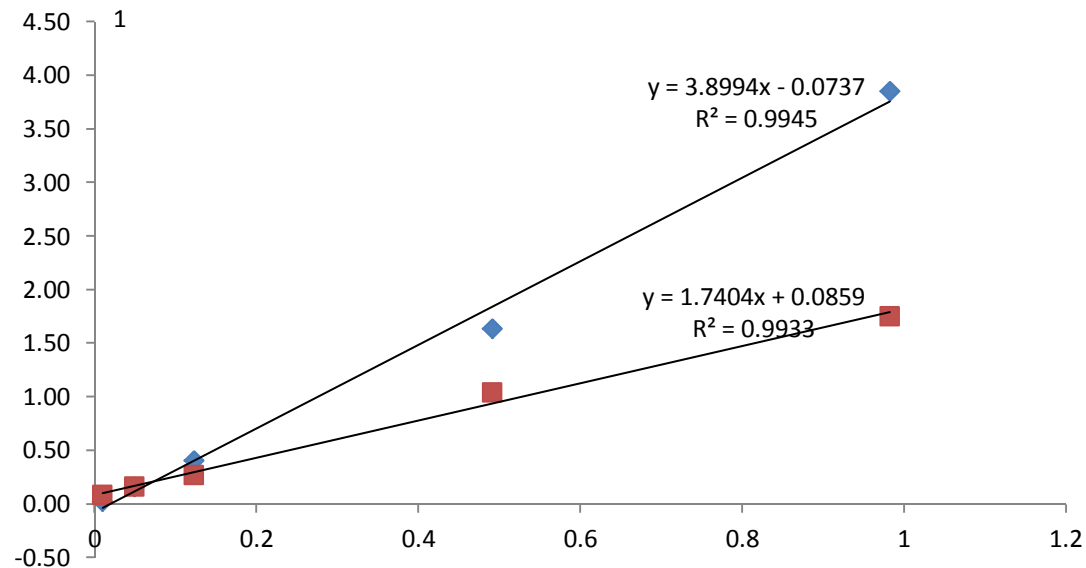


GC-ECD Ginger

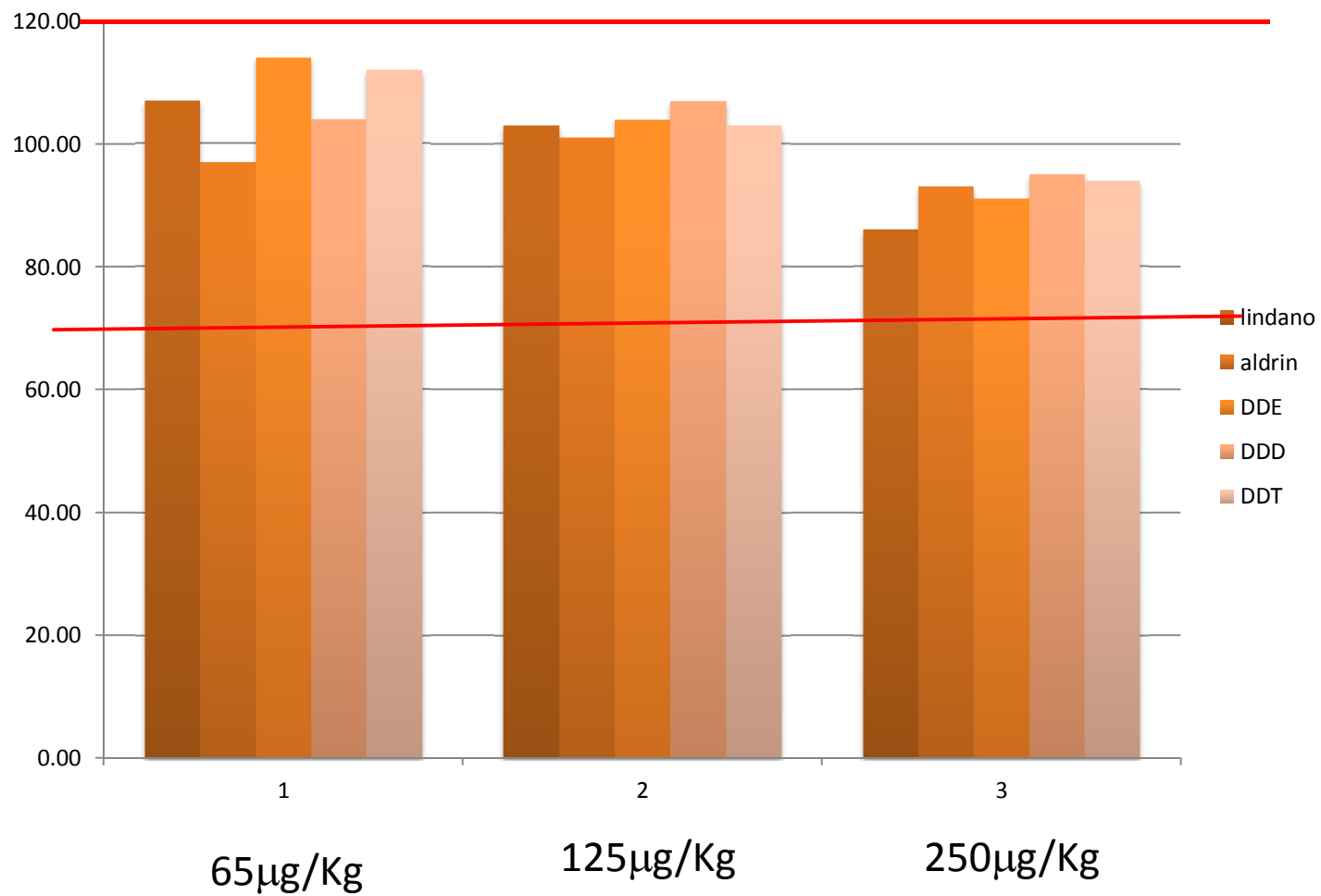
Matrix Effect



lindane



Ginger: OC Recoveries



GC-ECD Ginger

Reproductibility intra-lab

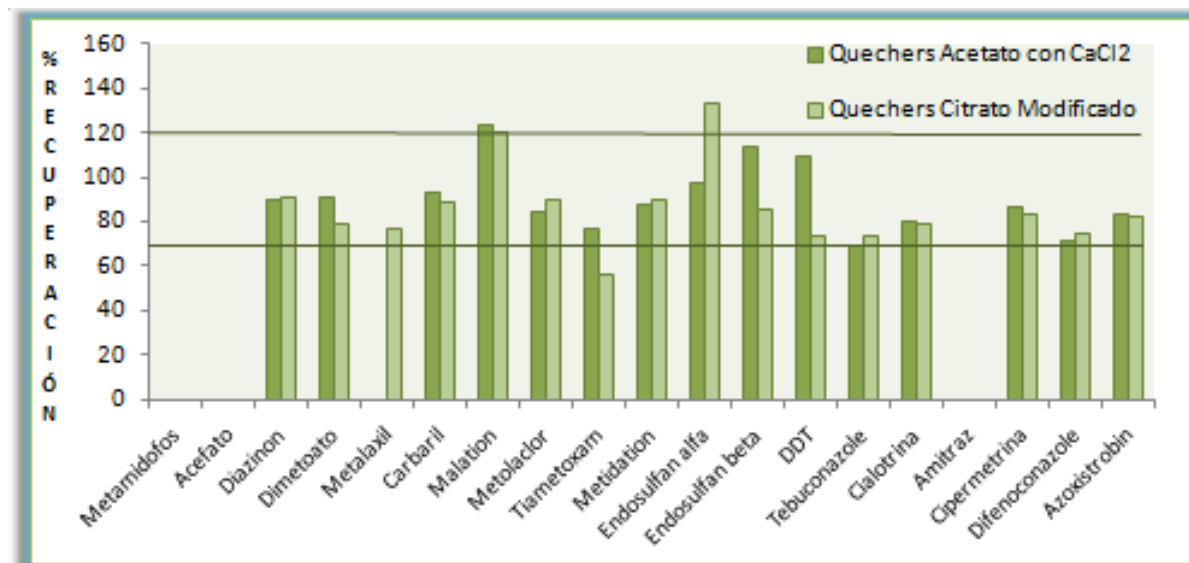


OC	Recovery (%)	RSDwr
Lindane	97	4
Aldrin	107	3
DDE	103	3
DDD	87	2
DDT	118	8

Repeteability

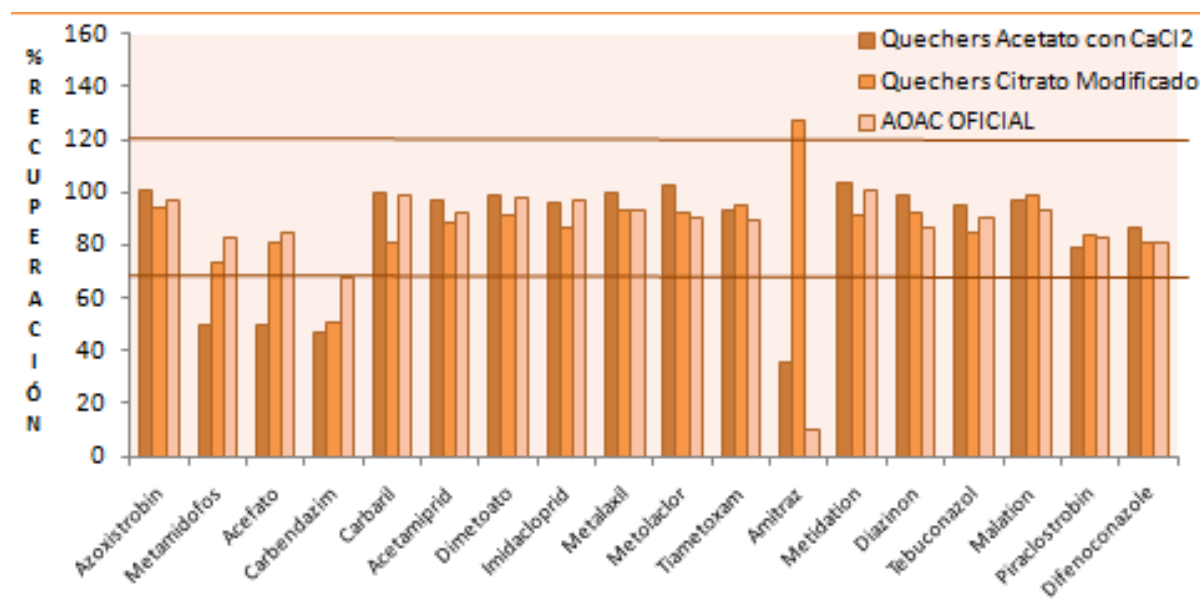
OC	Recovery (%)	RSDwr
Lindane	90	7
Aldrin	97	6
DDE	95	5
DDD	94	7
DDT	104	12

Recoveries for model pesticides in *Peumus boldus* using QuEChERS approaches



GC/MS

LC-MS/MS



Pesticides in medicinal & aromatics plants

Chamomille



Hawthorn



Artichoke leaves



Hypericum perforatum



Summary



- Analytical methods from Pharmacopoeias such as the USP do not consider MAPs as individual matrices. They propose an exhaustive clean up procedure, consuming huge amounts of time and reagents, with an intermediate sensitivity.
- In the 7th Ed. the European Pharmacopeia introduced a new concept, **that it is being implemented with minor adjustments by the coming MERCOSUR Pharmacopeia**
- it seems preferably to establish general parameters for method validation and toxicological evaluation , that should be adjusted for each case.
- It is necessary to develop new analytical methodologies as well toxicological criteria for the different latin american medicinal herbs.



GACT TEAM

Veronica Cesio
Andres Perez
Lucia Pareja
Silvina Niell
Natalia Gerez
Alejandra Bojorge
Natalia Besil
Marcos Colazzo
Ana Silva
Joaquin Gonzalez
Anisleidy Rivero



Herzlichen Danke
Muchas Gracias,
Thank you!!!

