



# Basement to surface expressions and critical factors in the genesis of unconformity-related deposits

Eric Potter<sup>1</sup> and TGI-4 researchers<sup>2</sup>

<sup>1</sup>- Geological Survey of Canada, Ottawa.

<sup>2</sup>- University of Ottawa, University of Regina, University of Saskatchewan, Queen's University, Université Laval, Cameco Corp., AREVA Resources Canada, Denison Mines Corp., Peridot Geoscience Ltd., Saskatchewan Geological Survey



Natural Resources  
Canada

Ressources naturelles  
Canada

Canada



## Targeted Geoscience Initiative 4 (TGI-4)



TGI-4 is a ***collaborative*** federal geoscience program that provides industry with the ***next generation of geoscience knowledge and innovative techniques***, which will result in more effective targeting of buried mineral deposits.



Natural Resources  
Canada

Ressources naturelles  
Canada

Canada



# TGI-4 Uranium Collaborations



## ***Cameco Corp.:***

Alexandre Aubin

Eric Bort

Aaron Brown

Tom Kotzer

Tyler Mathieson

Brian McGill

Scott Rogers

Vlad Sopuck

Gary Witt

Garnet Wood

Gerard Zaluski

## ***AREVA:***

David Quirt

John Robbins

## ***Denison Mines Corp.:***

Chad Sorba

## ***D.E. Jiricka Enterprises:***

Dan Jiricka

## ***Peridot Geoscience Ltd.:***

Donald Wright

## **Provincial/Territorial:**

Sean Bosman (SGS)

Jason Berenyi (SGS)

Colin Card (SGS)

Gary Delaney (SGS)

Claude Dion (MRN-QC)

Michelle Hanson (SGS)

Bill Slimmon (SGS)

Luke Ootes (NTGO)



Natural Resources  
Canada

Ressources naturelles  
Canada

Canada



# TGI-4 Uranium



## Two subprojects:

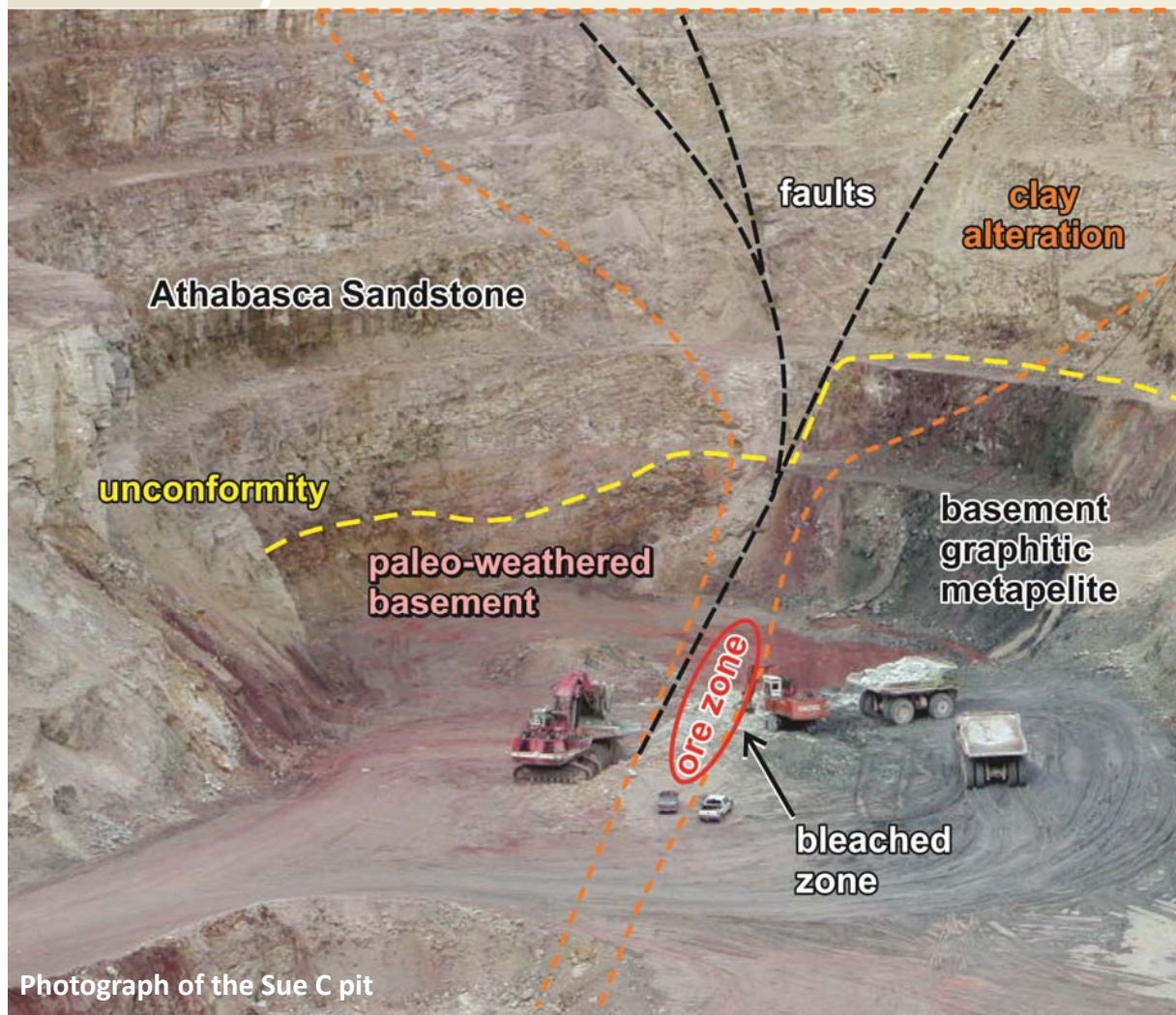
- 1) Basement to surface expressions of deep mineralization and refinement of critical factors leading to the genesis of unconformity-related uranium deposits; and
- 2) Recognition of uranium ore system alteration signatures in complex terranes: IOCG vs albite-hosted uranium vs volcanic-hosted uranium.



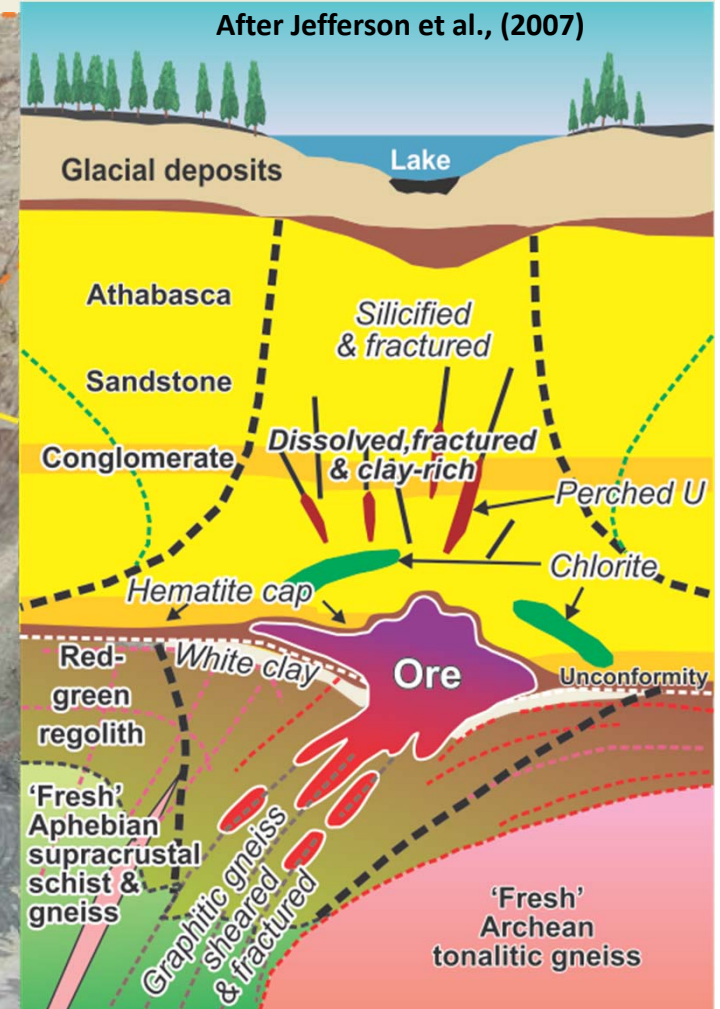




# TGI-4 Uranium: unconformity-related systems



Photograph of the Sue C pit



After Jefferson et al., (2007)

Key L. - Midwest - Collins style

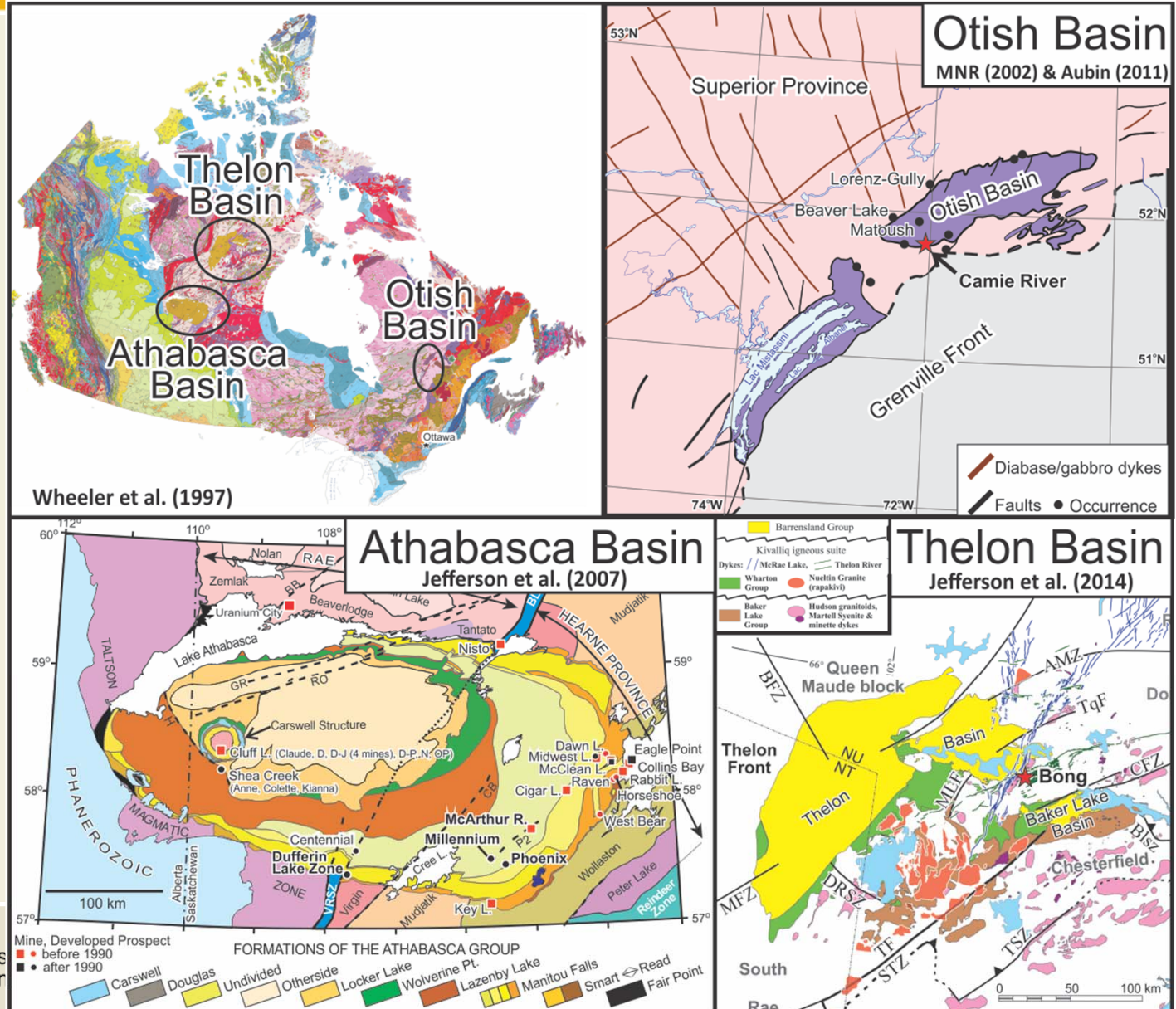




# TGI-4 Uranium



All Open File Reports cited can be downloaded by searching the report number on GEOSCAN (<http://geoscan.nrcan.gc.ca>)



Natural Resources Canada

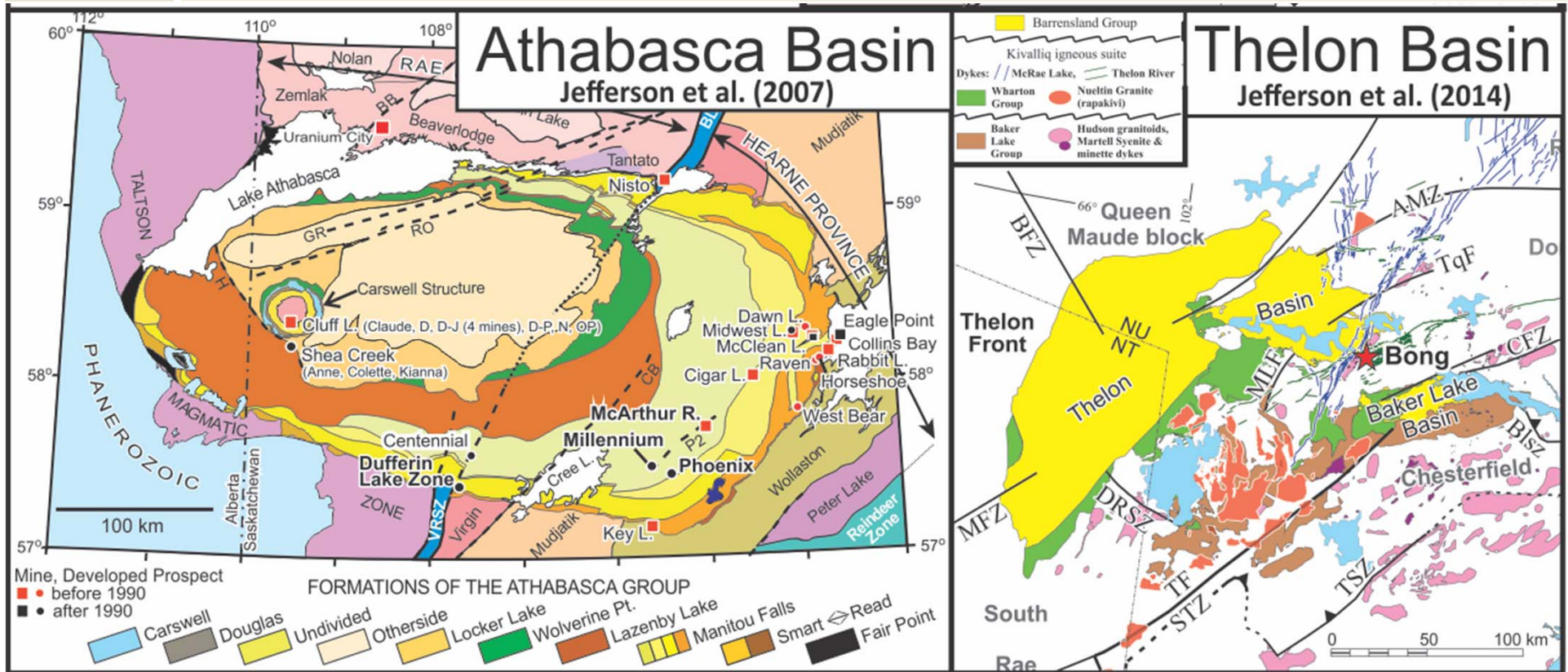
Res Car



# TGI-4 Uranium



All Open File Reports cited can be downloaded by searching the report number on GEOSCAN (<http://geoscan.nrcan.gc.ca>)



Athabasca sites: McArthur River, Phoenix, Millennium, Dufferin Lake.

Thelon: Bong



Natural Resources Canada

Ressources naturelles Canada



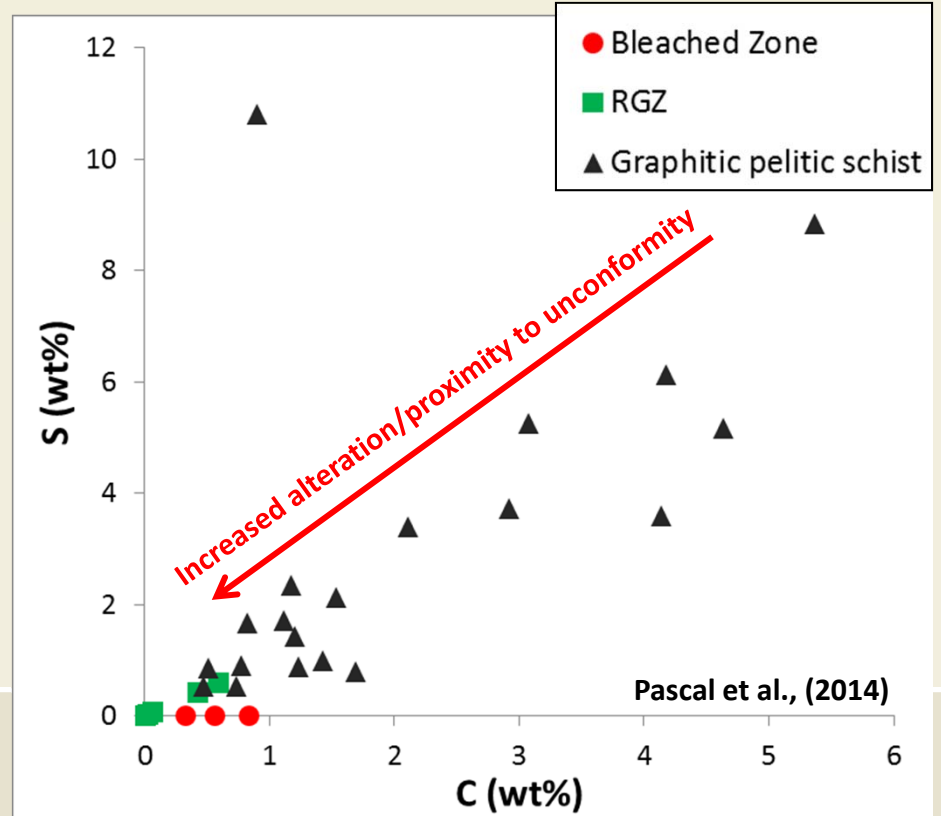
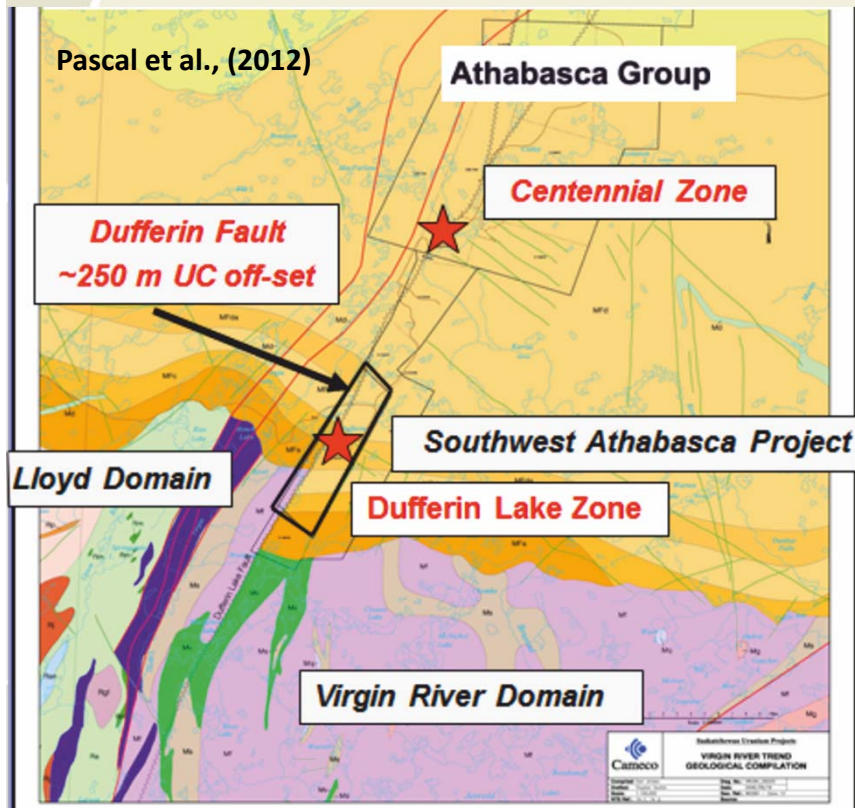
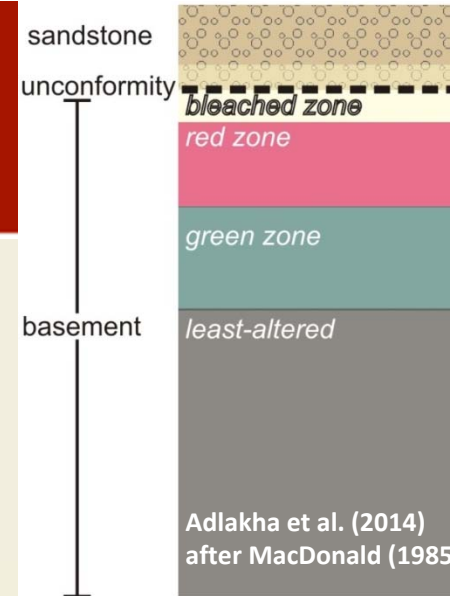




# Graphite-depletion in basement rocks at the Dufferin Lake Zone

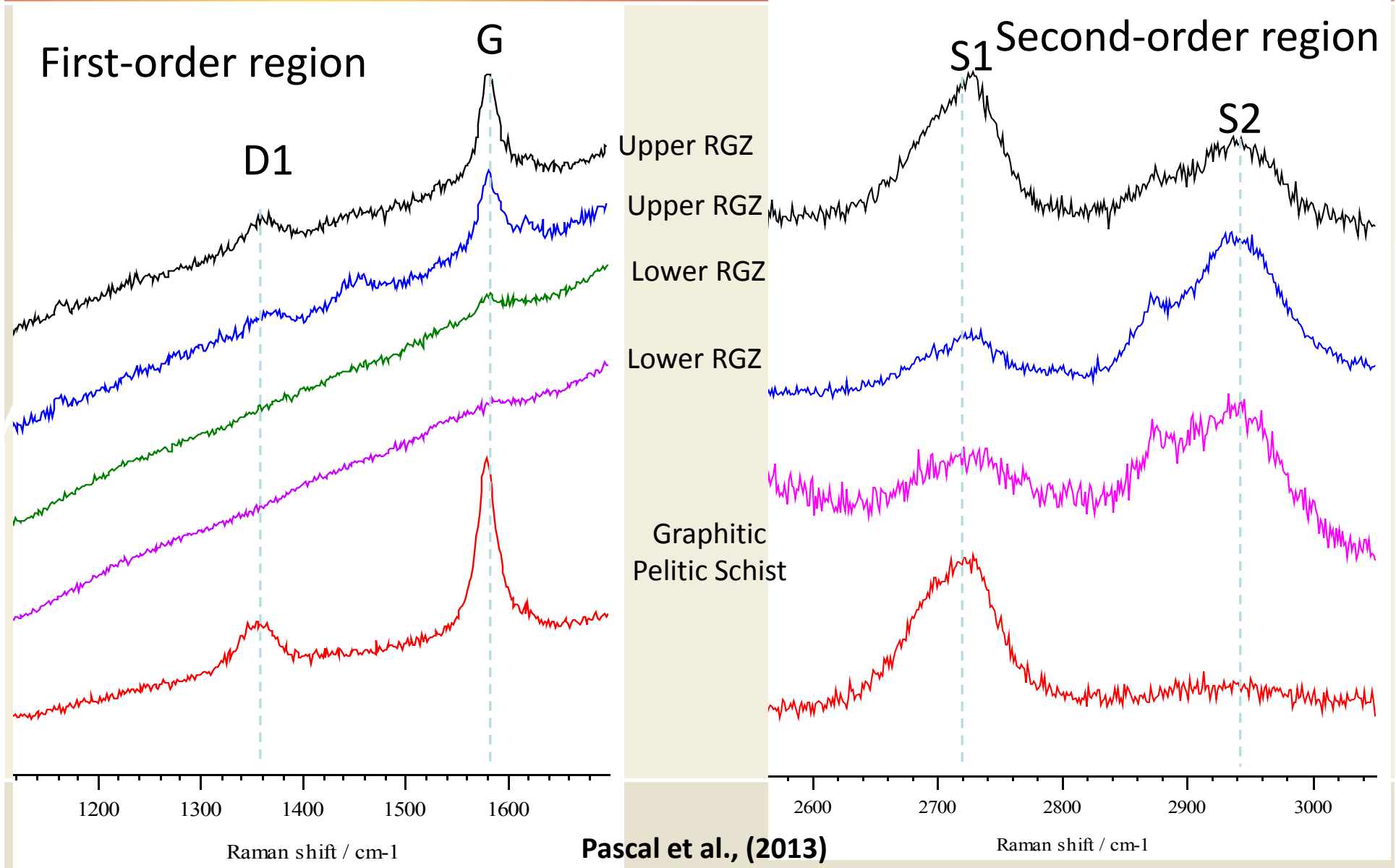
Marjolaine Pascal, Kevin Ansdell, Irvine Annesley

- Dufferin Lake zone, South of Centennial deposit.
- Presence of graphite-depleted rocks immediately below the mineralized zone.
- **GSC Open File# 7258, Goldschmidt 2012, 2013 & SGA 2013**





# Different Raman spectra of carbon species in the different zones at Dufferin Lake



## Bleached Zone

## Red Zone

## RGZ

## Green Zone

## Variably Graphitic Pelitic Schist

- No recognized carbon species (C & S consumption/depletion)
- Most highly altered with enrichments in Al, Na, K, B, and U
- Quartz and hematite dissolution, dravite formation
- Important fluid-rock interactions
- Variable loss of carbon (+ sulfide) confirmed macroscopically, petrographically, and geochemically
- Carbon species present, but in very low quantities
- Mainly amorphous carbon
- Similar major element composition with the graphitic pelitic schist
- Quartz ± hematite overprint the original fabric, and may be linked to the loss of graphite (exact timing unknown)
- Evidence for 2 brines:
  - The regional basinal fluid (Na-Ca-Mg brine)
  - An evolved brine possibly related to U mineralization (Na-Ca-Mg-Li brine)

- No fresh rocks (variably retrograded)
- Different kinds of mainly well-ordered carbon species
- Monophase vapor FI - Could be generated by the breakdown of graphite to  $\text{CH}_4$  and associated feldspars/micas to  $\text{NH}_4$  and  $\text{N}_2/\text{H}_2$

**Three possible reductants for uranium precipitation**

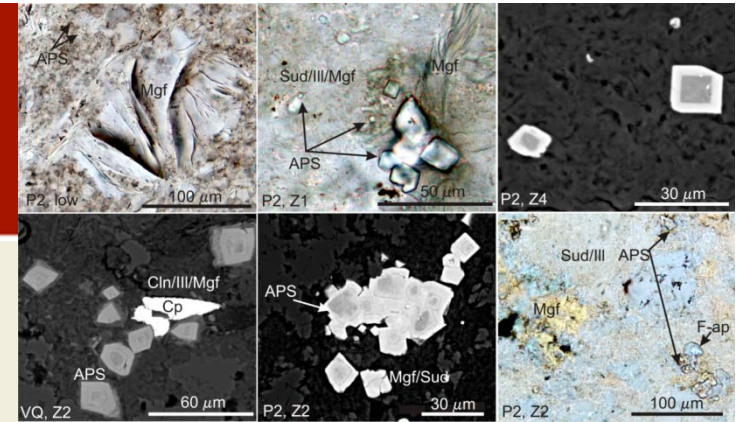


## Alteration along the P2 fault, McArthur River Deposit

Erin Adlakha, Keiko Hattori, Gerard Zaluski,  
Tom Kotzer, Eric Potter

- Alteration similar to ore zone: sud ± ill, Mgf (magnesiofoitite), APS
- Spatial association and similar chemistry along the P2 suggests that APS plus Mgf were contemporaneous & formed by uraniferous oxidizing fluid – APS also contain trace amounts of U-
- Suggests the P2 fault it was conduit for uraniferous fluids
- However, the fluids did not form U deposits all along the P2.....the deposits required interaction with focused reduced media to precipitate uraninite.

**GSC Open File Reports: 7365, 7462 (in press), Goldschmidt 2013,  
SGA 2013, GAC-MAC 2014**



APS=aluminum phosphate  
sulphate minerals



Natural Resources  
Canada

Ressources naturelles  
Canada

Canada





# Iron and Magnesium isotopic signatures related uranium precipitation processes

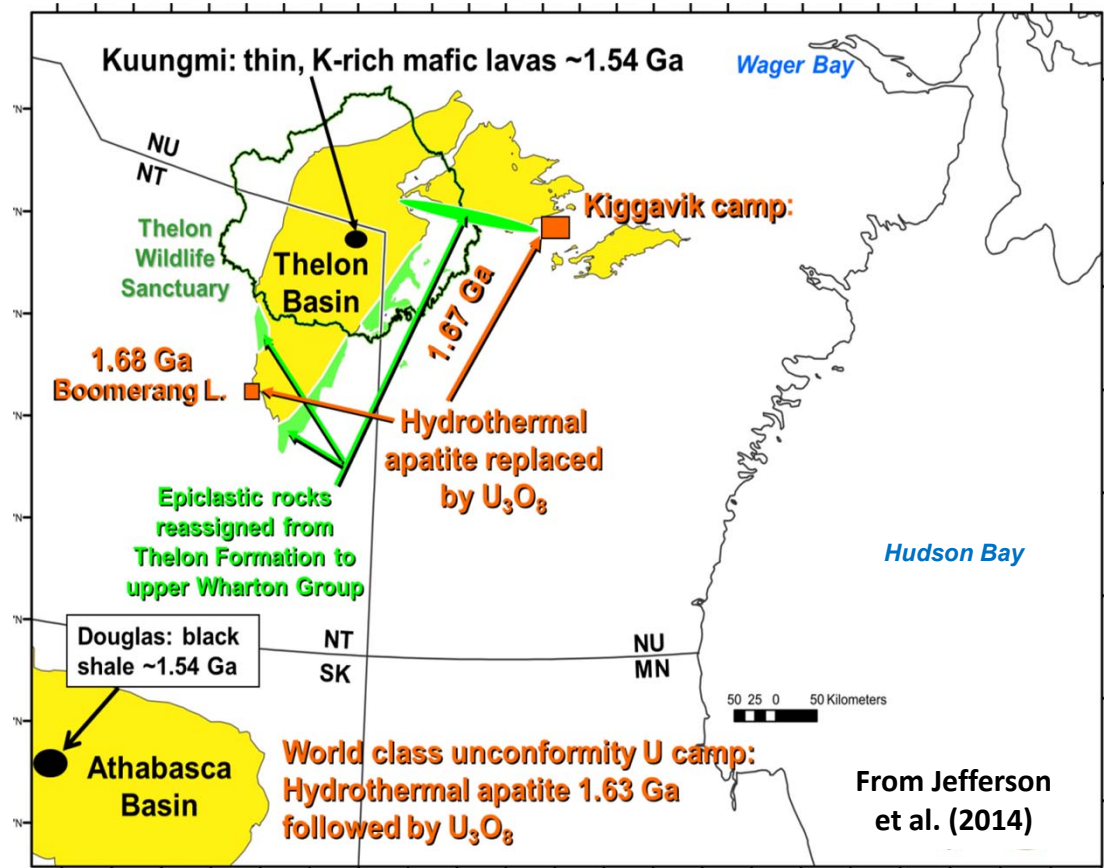
## Two components:

- a) whole rock and clay-size fractions (Bong & McArthur River deposits; Potter et al.)
- b) Clay (chlorite) fractions (McArthur River deposit; Kyser et al.)

Fractionation is temperature dependent and strongly influenced by redox reactions (cf. Dideriksen et al, 2010; Hill et al, 2010; Liu et al, 2010; Teng et al., 2010).

As a result, there is potential for distinct populations that reflect weathering, diagenetic, and hydrothermal/redox origins.

**Outputs: Potter et al., GAC-MAC 2014; open file *in press*, Kyser et al., open file *in prep*.**



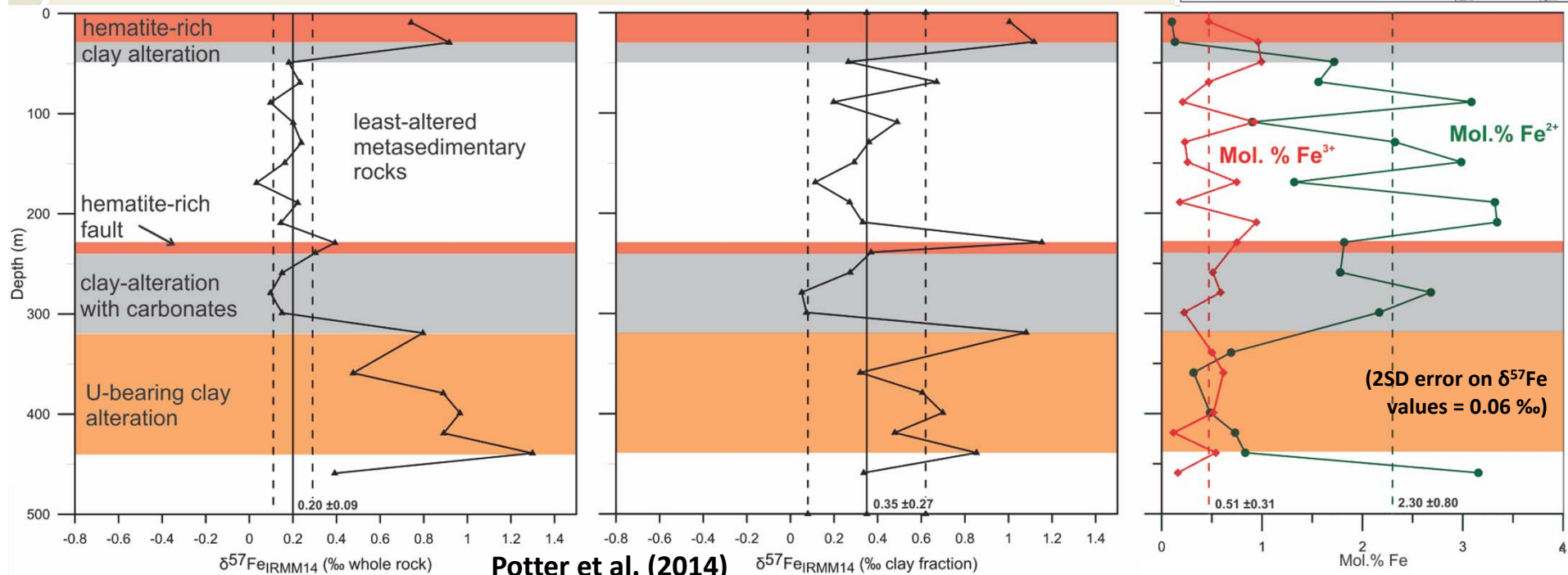
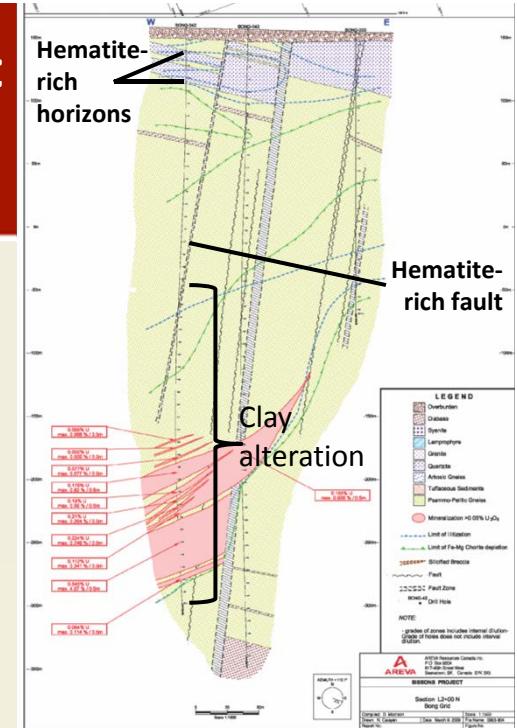




# Whole-rock Fe & Mg isotopes: Bong deposit

Eric Potter, Ryan Sharpe, Isabelle Girard,  
Mostafa Fayek, David Quirt, John Robbins

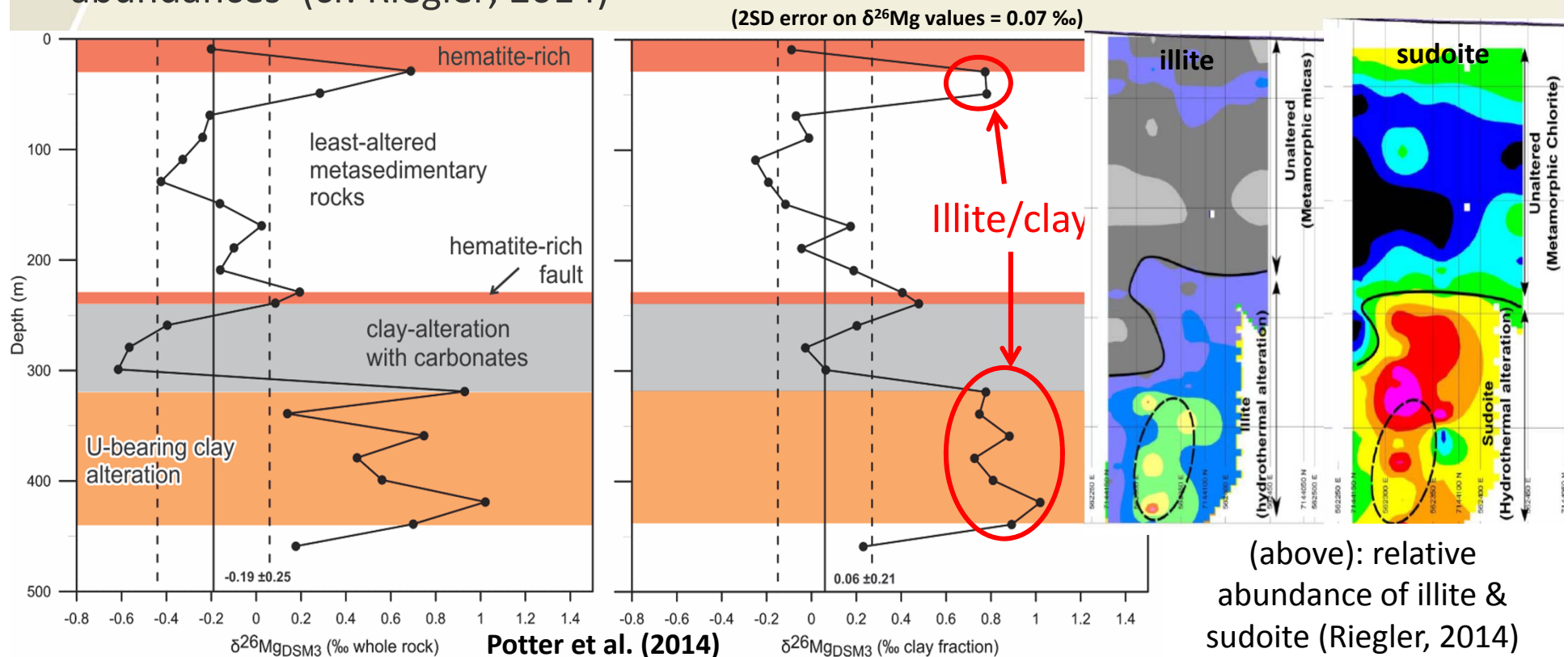
- Elevated  $\delta^{57}\text{Fe}$  values associated with the U-bearing clay alteration and hematite-bearing horizons - correlate with relatively **losses in  $\text{Fe}^{2+}$**
- Whole-rock vs clay fractions: Fe isotopic shifts in hematite-rich horizons dominated by clay-size fraction – **low vs. higher temperature processes**





# Whole rock Mg isotopes: Bong deposit

- Elevated  $\delta^{26}\text{Mg}$  values associated with the U-bearing clay alteration and the lower unit of the upper hematite-bearing horizons - reflecting presence of illite-rich alteration (cf. Wimpenny et al., 2014).....
- However, clay-altered zone above the U-bearing clay alteration yielded negative values, which may reflect presence of carbonate minerals or relative sudoite-chlorite abundances (cf. Riegler, 2014)

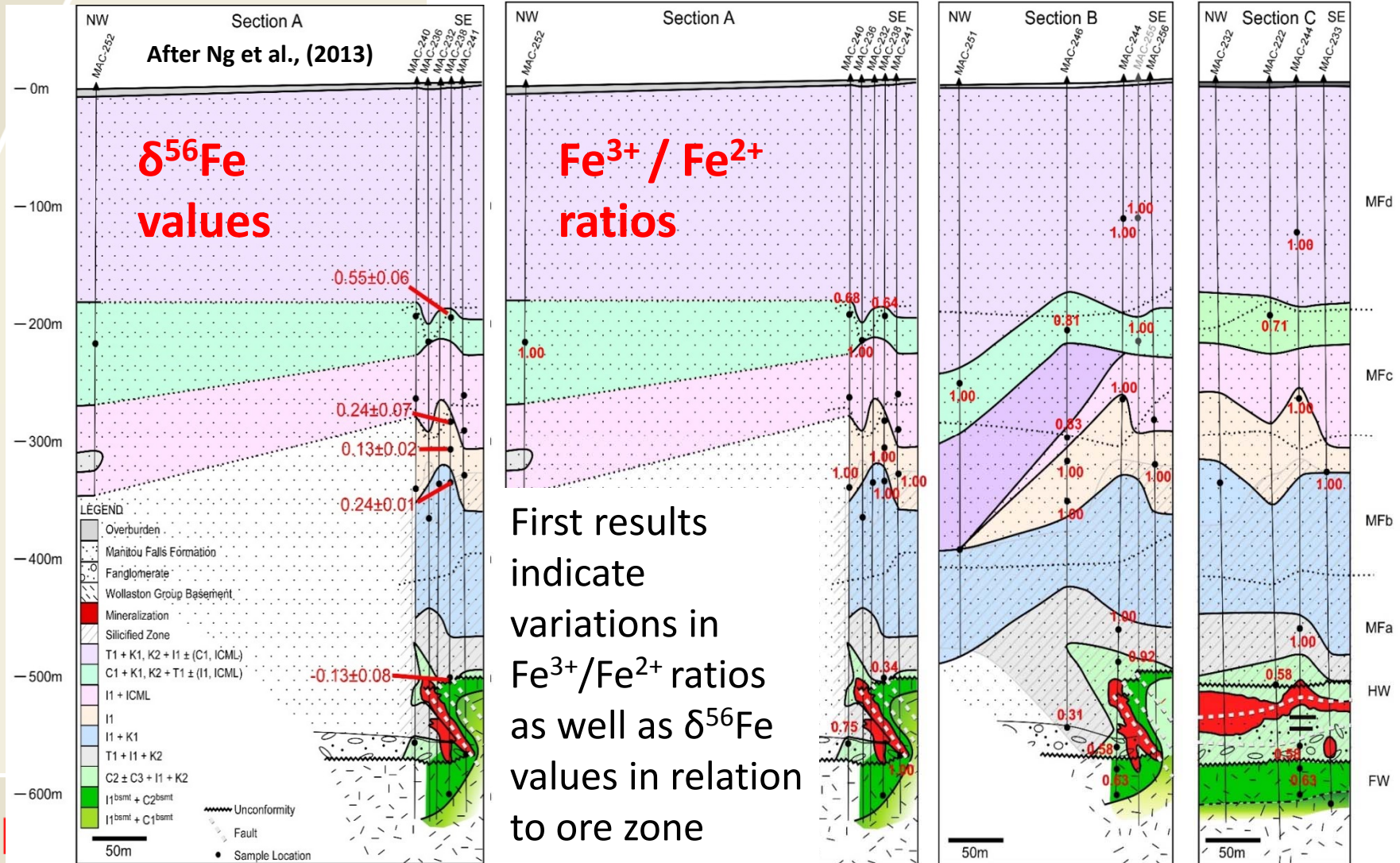






# Fe and Mg isotopic composition of clay minerals from McArthur River

Kurt Kyser, Andrés Acevedo, Urmidola Raye, Don Chipley

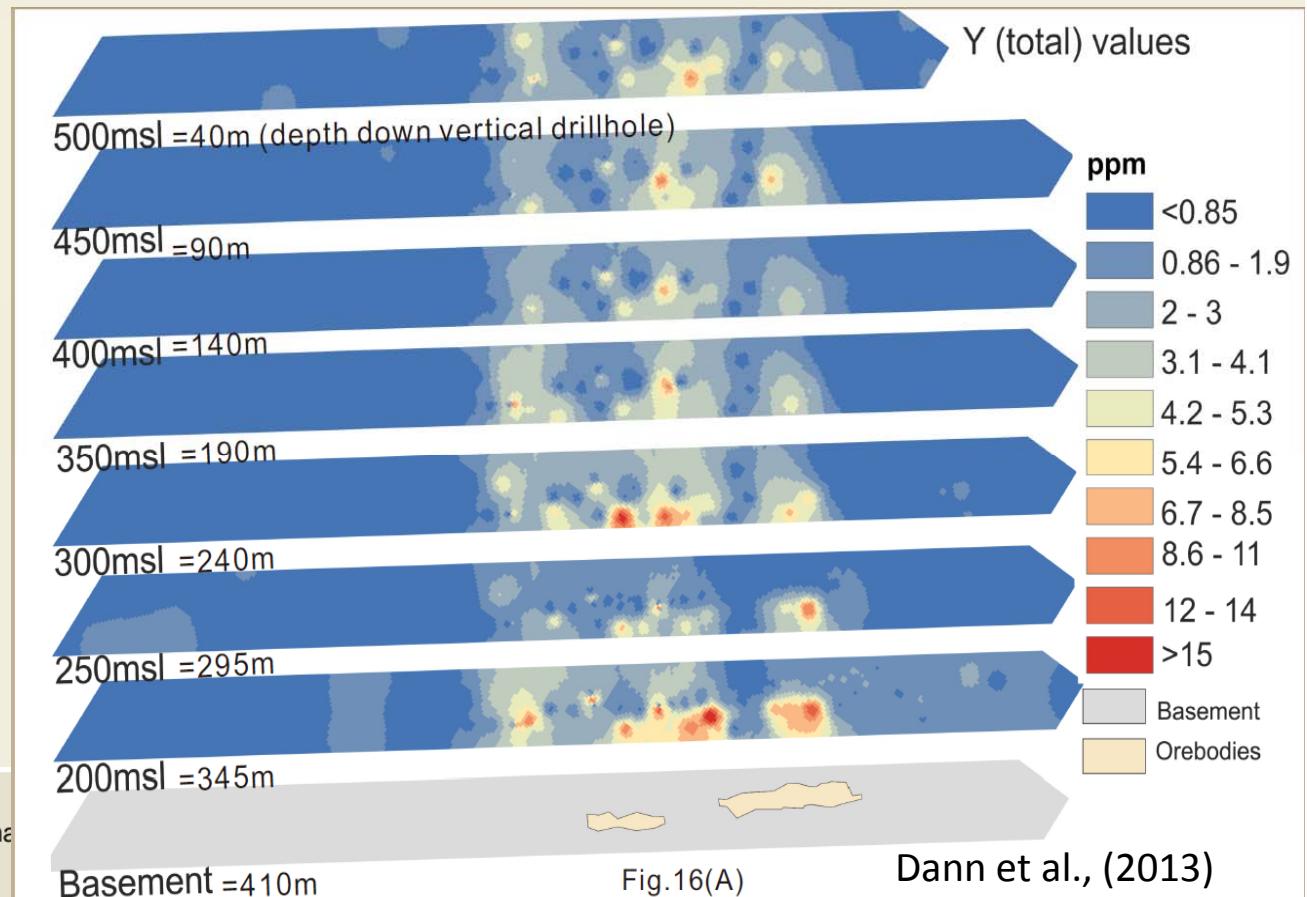




## Geochemical Anomalies in host rocks: Phoenix Deposit

### Jack Dann, Keiko Hattori, Eric Potter, Chad Sorba

- Elevated concentrations of U, B, Pb and, Ni, Co, Cu, As, Y and REEs in sandstones over 400 meters above the uranium deposit and along the WS shear zone at the Phoenix Deposit.
- Y (+HREE) & W show vertical chimneys from deposit to the surface
- **GSC Open File Reports: 7366 & 7463**



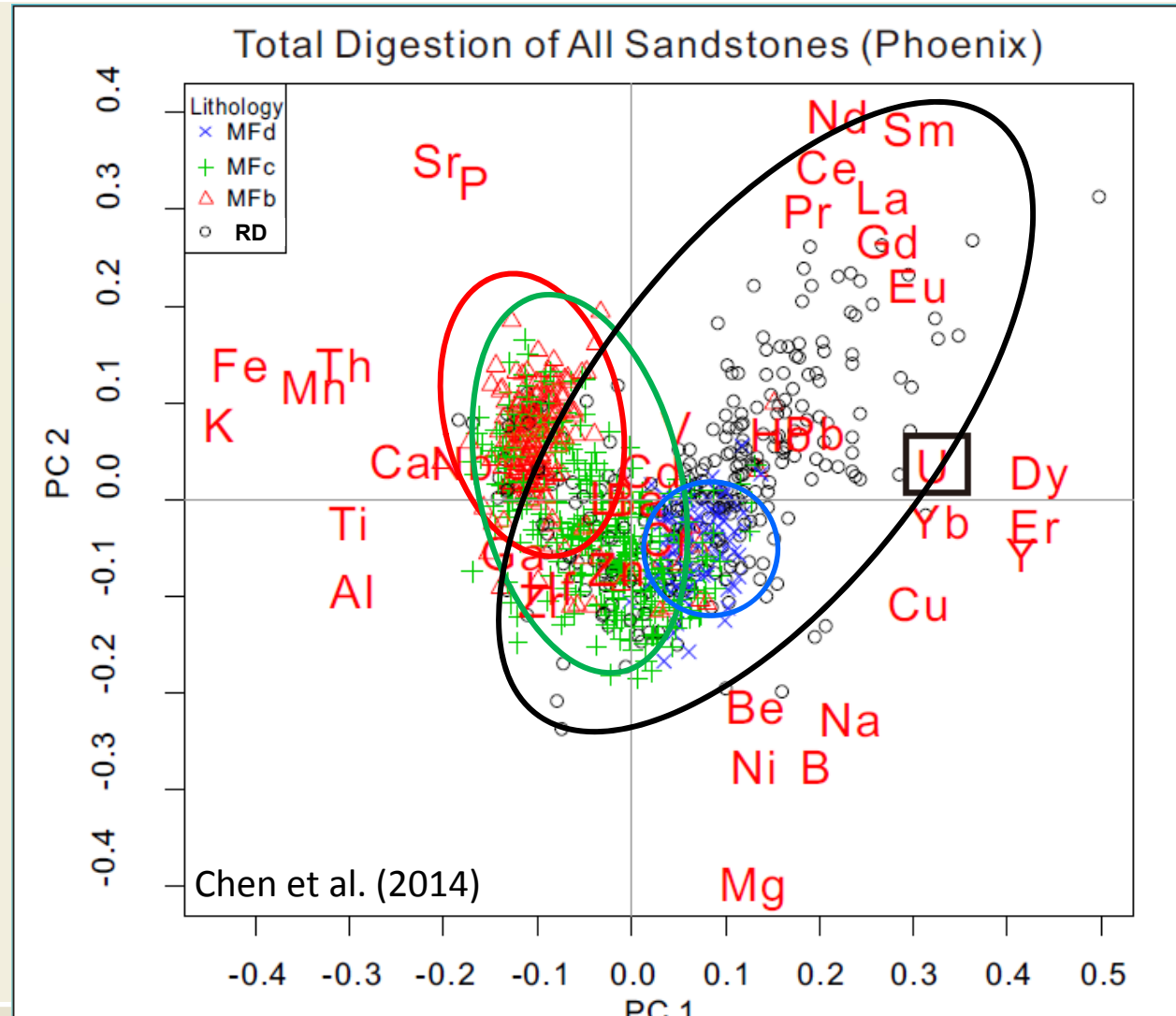


# Elemental assemblages in Athabasca Group sandstones, Phoenix Deposit

Chris Chen, Keiko Hattori, Eric Grunsky

- Elemental associations:
  - LREE
  - U, HREE
  - B, Na, Ni, Mg
  - Sr, P
  - K, Fe, Mn Th
- Each Member/Formation has unique signature

**GSC Open File Report  
7578**







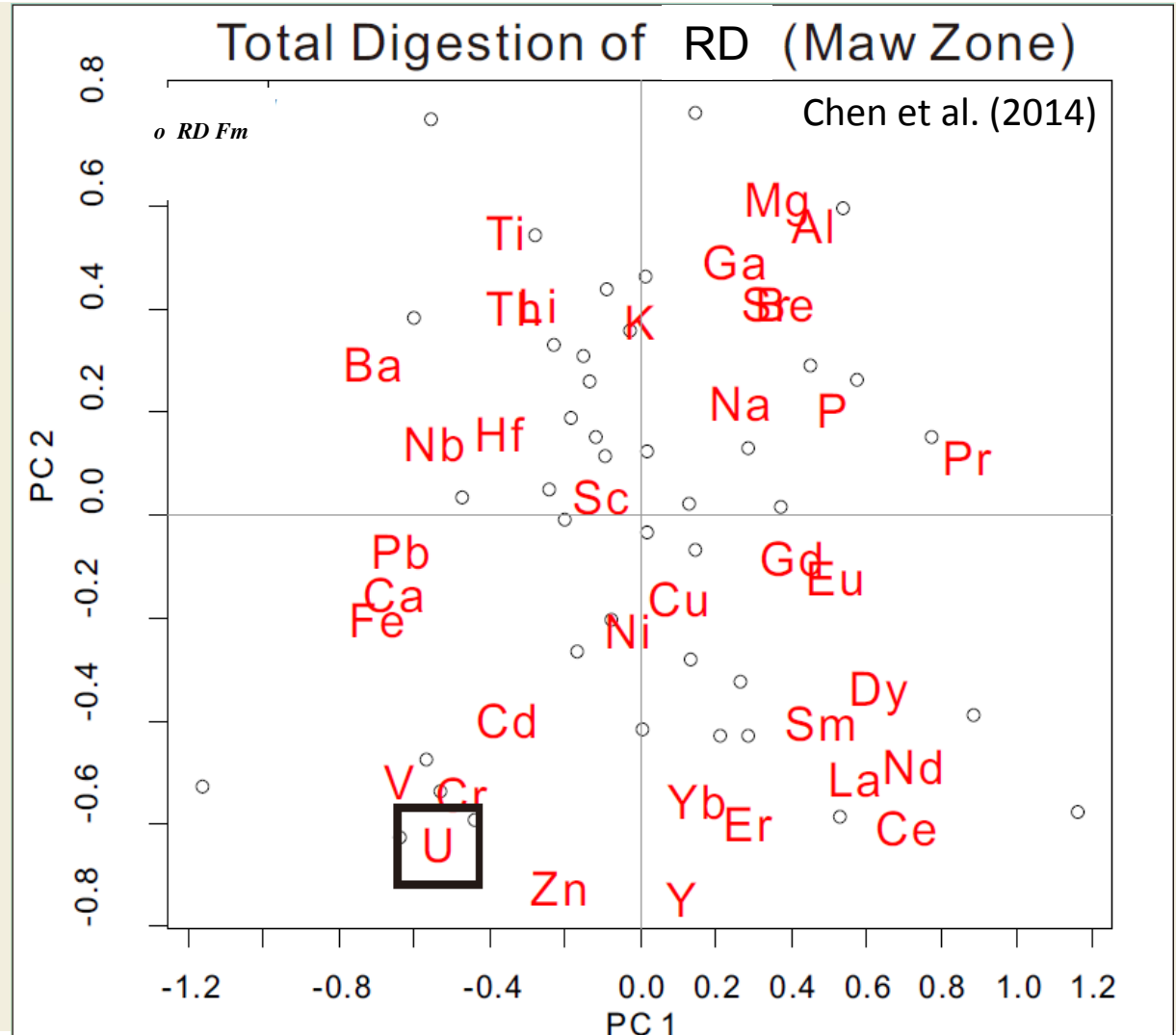
# Elemental assemblages in Athabasca Group sandstones, Maw Zone

**Maw Zone:** REE-bearing breccia with no significant U, ca. 6 km SW of the Phoenix deposit.

Different element associations reflecting difference processes.

Correlation between U, Fe, V, Cr = oxidizing fluids were U-bearing, but no efficient reductants

GSC Open File Report *in press*





# Distal Expressions of buried U systems

Donald Wright, Eric Potter



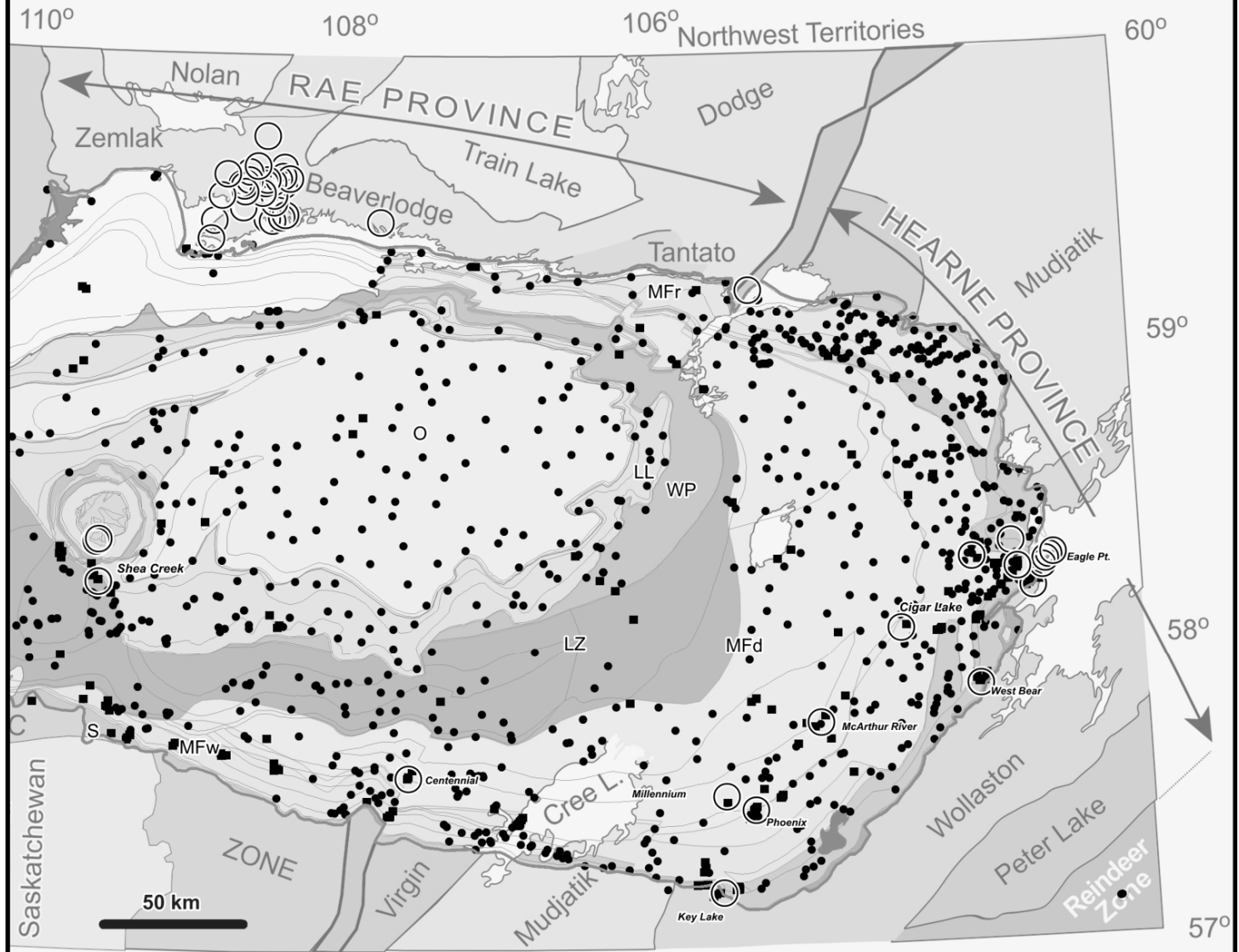
**A compilation of geochemical sampling over the Athabasca Basin to encourage examination of regional signatures.**

**Sources:**

- Saskatchewan Geological Survey Data File Publications
- Saskatchewan Mineral Assessment Database Files

**Contents:**

- 30,256 Samples
- 50% Athabasca Group
- 50% Basement
- **Digestions:**
  - Partial Digest
  - Total Digest
- **Analyses**
  - ~ 50% U + select elements
  - ~ 50% Multielement
- **Metadata include:**
  - Spatial Coordinates
    - Company
    - Laboratory
    - Sample Lithology



○ *Known U occurrences*

Background after multiple sources: see notes



# Regional Surface Rock Geochemistry, Athabasca Basin, Saskatchewan

GSC Open File Reports: 7495 & 7614



## Key Observations

1. Important geochemical signatures are recorded by the uppermost units across the basin
2. Geochemical signatures highlight lineaments and lineament intersections are loci for uranium mineralization
3. A regional hydrothermal U signature is also expressed in the Wolverine Point Fm.

## Geochemical Signatures in samples <50 m depth

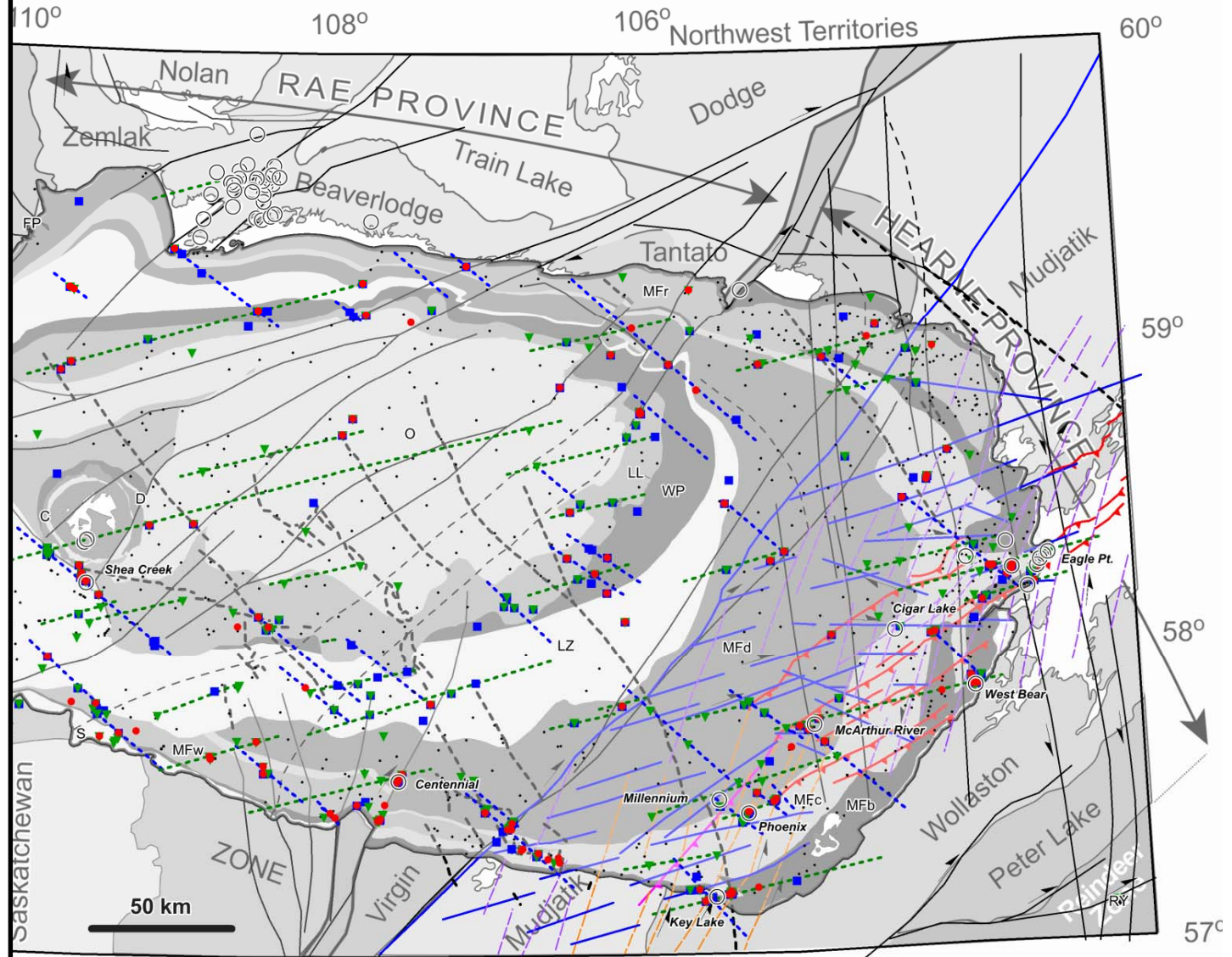
- U Enrichment
- Hydrothermal
- ▼ Distal

## Lineament Extensions

- D<sub>3</sub> - 070°
- D<sub>3</sub> - 110°

After Portella & Annesley (2000)

○ *Known U occurrences*



Background after multiple sources: see notes





# Regional Surface Rock Geochemistry, Athabasca Basin, Saskatchewan

GSC Open File Reports: 7495 & 7614



## Key Observations

1. Important geochemical signatures are recorded by the uppermost units across the basin
2. Geochemical signatures highlight lineaments and lineament intersections are loci for uranium mineralization
3. A regional hydrothermal U signature is also expressed in the Wolverine Point Fm.

## Geochemical Signatures

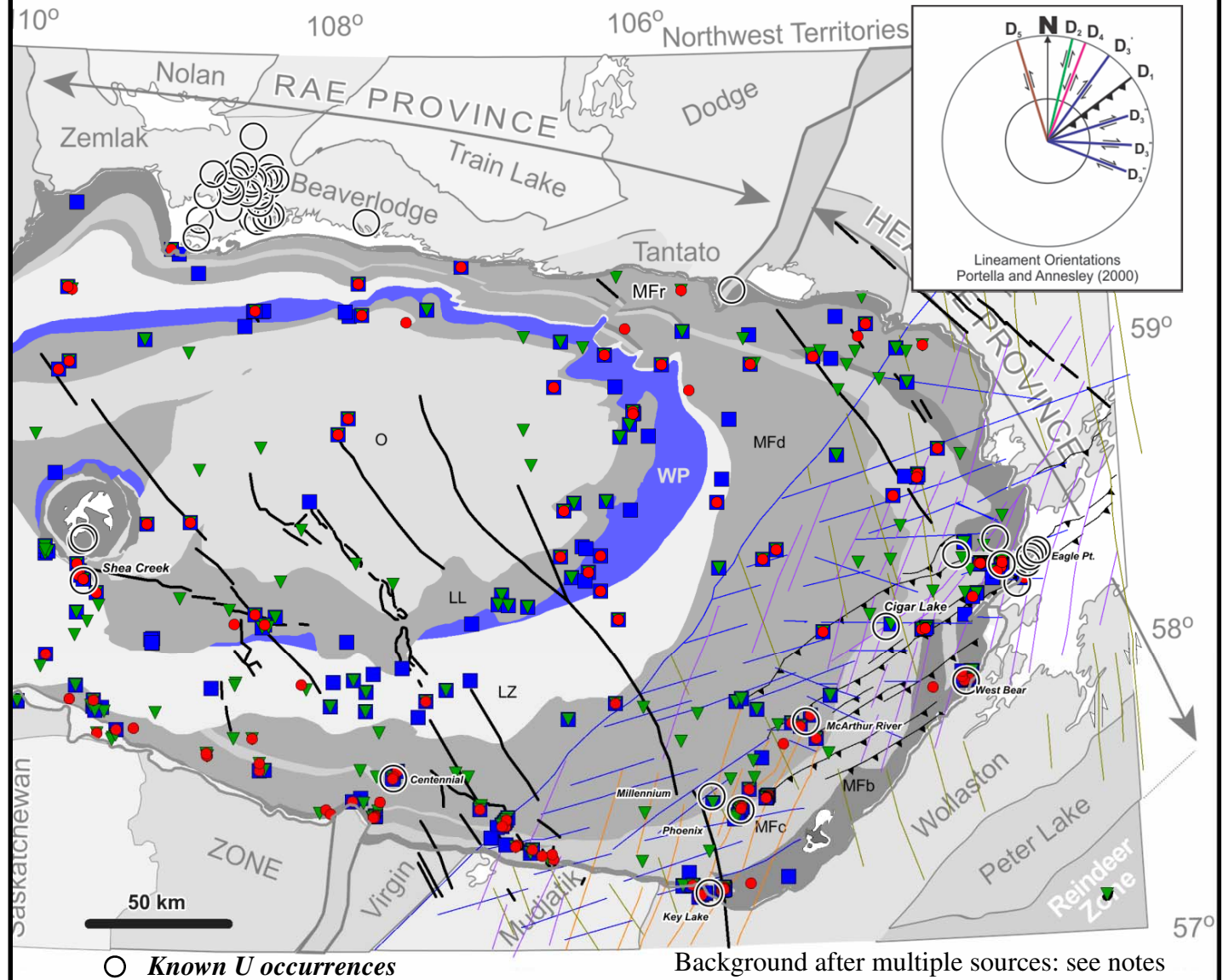
(Surface Samples (< 50 m))

- U Enrichment
- Hydrothermal
- ▼ Distal

## Structural Features

After multiple references, see notes.

- Diabase dyke trace
- Lineaments

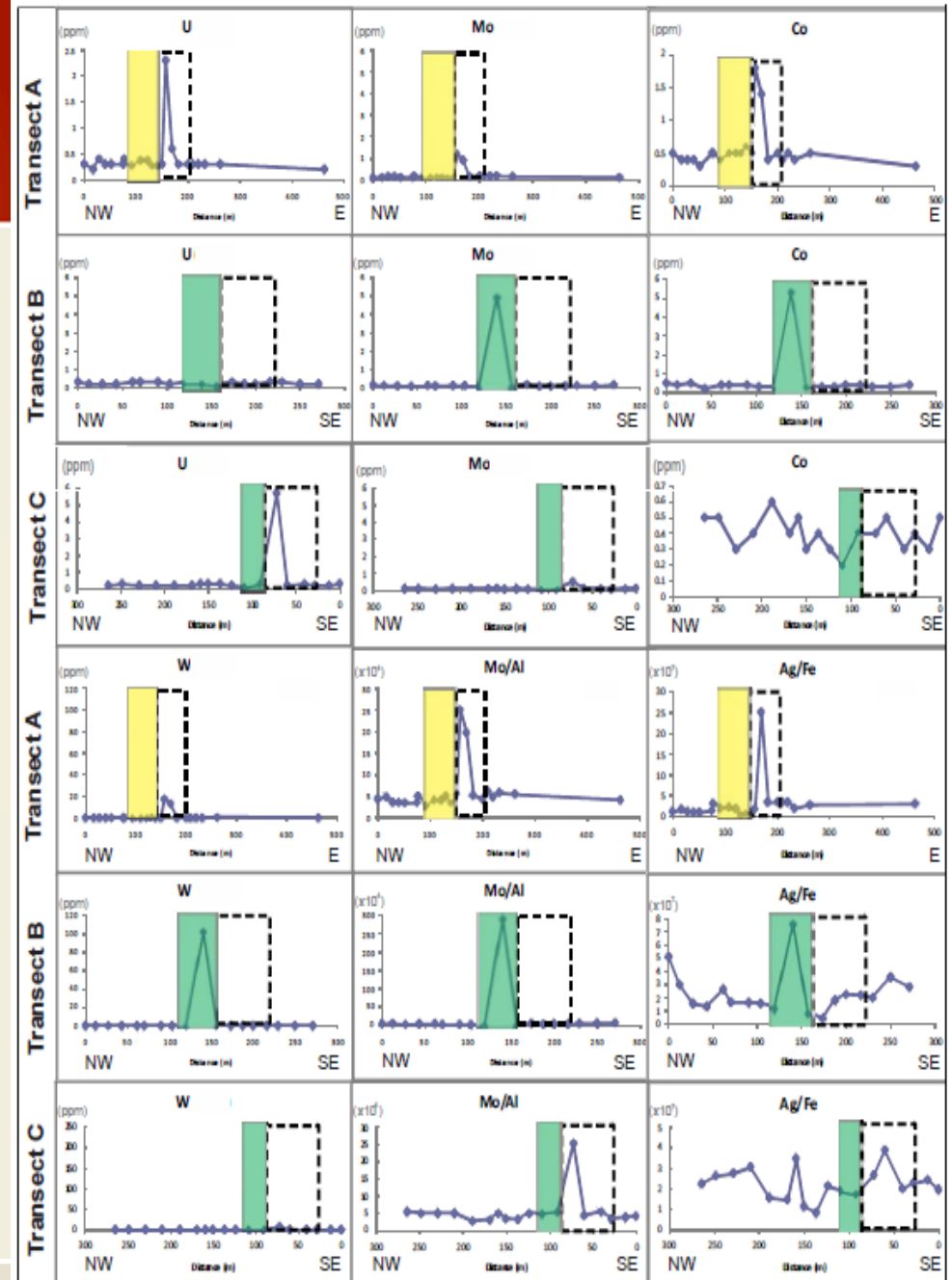
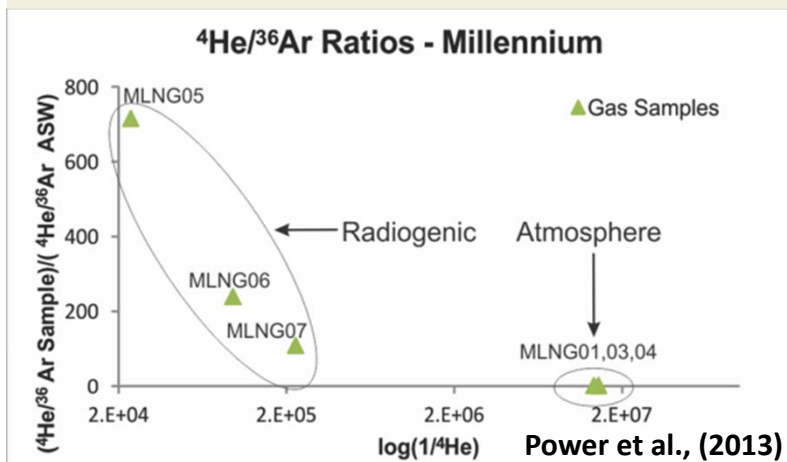




# Surficial Geochemical Anomalies: Phoenix & Millennium Deposits

Michael Power, Keiko Hattori,  
Tom Kotzer, Eric Potter

- U, Mo, Co, Ag and W anomalies in humus and B-horizon soils
- Elevated He dissolved in groundwater above Millennium deposit
- **GSC Open File Reports: 7257, 7235, Abstracts: Goldschmidt 2013, SGA 2013, GAC-MAC 2012, 2013**



Power et al., (2012)  
 [Dashed Box] fault [Shaded Area] Phoenix deposit (surface projection)



# Surficial Geochemical Anomalies: Phoenix & Millennium Deposits

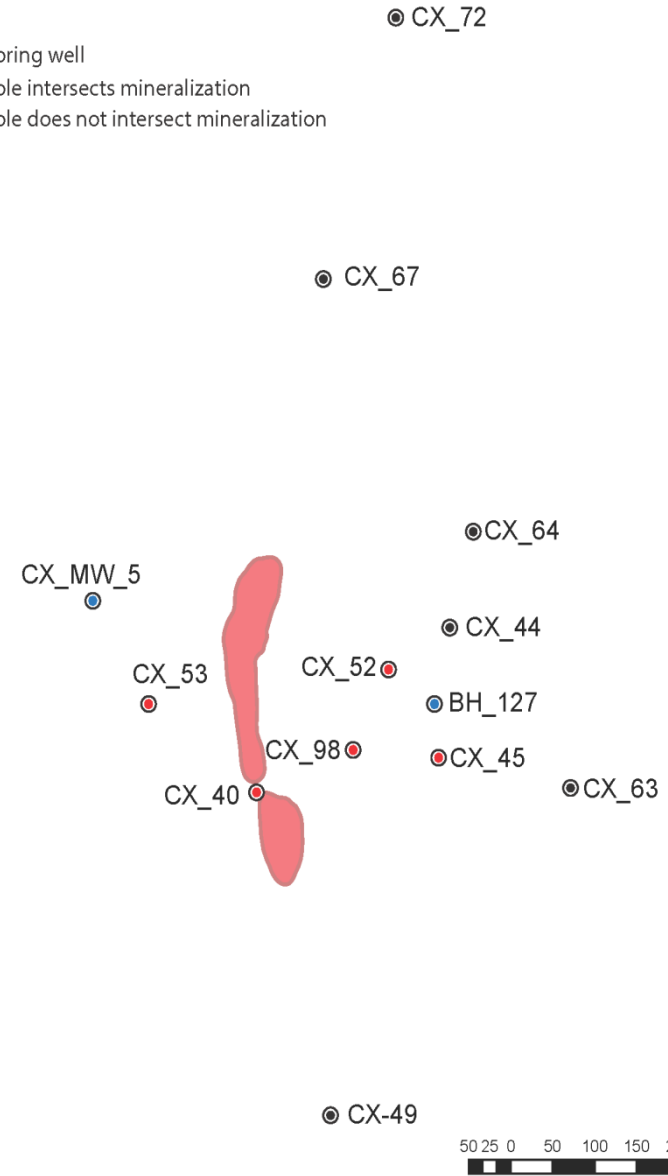
Austin Krahenbil, Keiko Hattori, Tom Kotzer

Anomalous Rn and He dissolved in groundwater above Millennium deposit

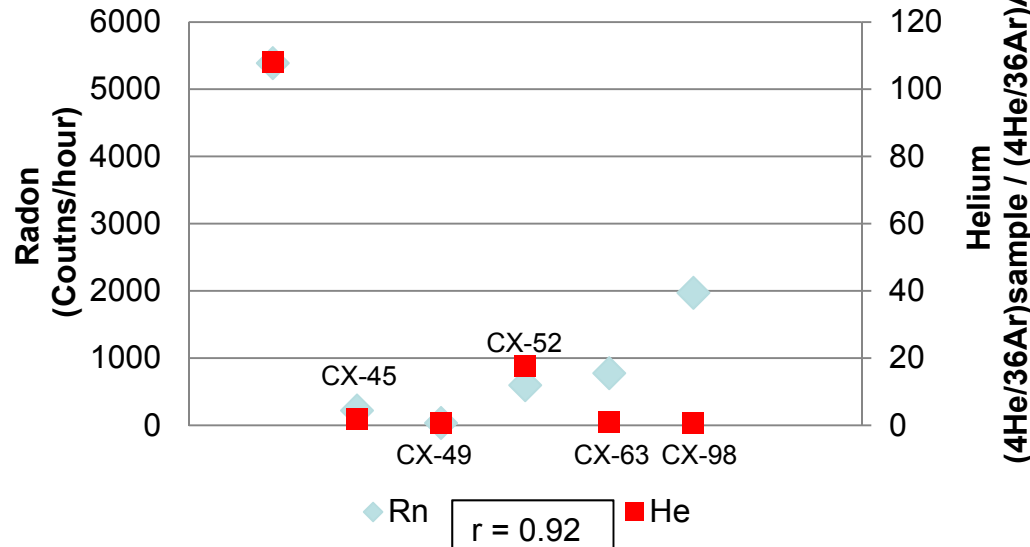
- **GSC Open File Report 7611**
- **Mary Devine (unpubl., Rn data)**

## Millennium Sampling Locations

- Monitoring well
- Borehole intersects mineralization
- Borehole does not intersect mineralization



### Radon & Helium Correlation



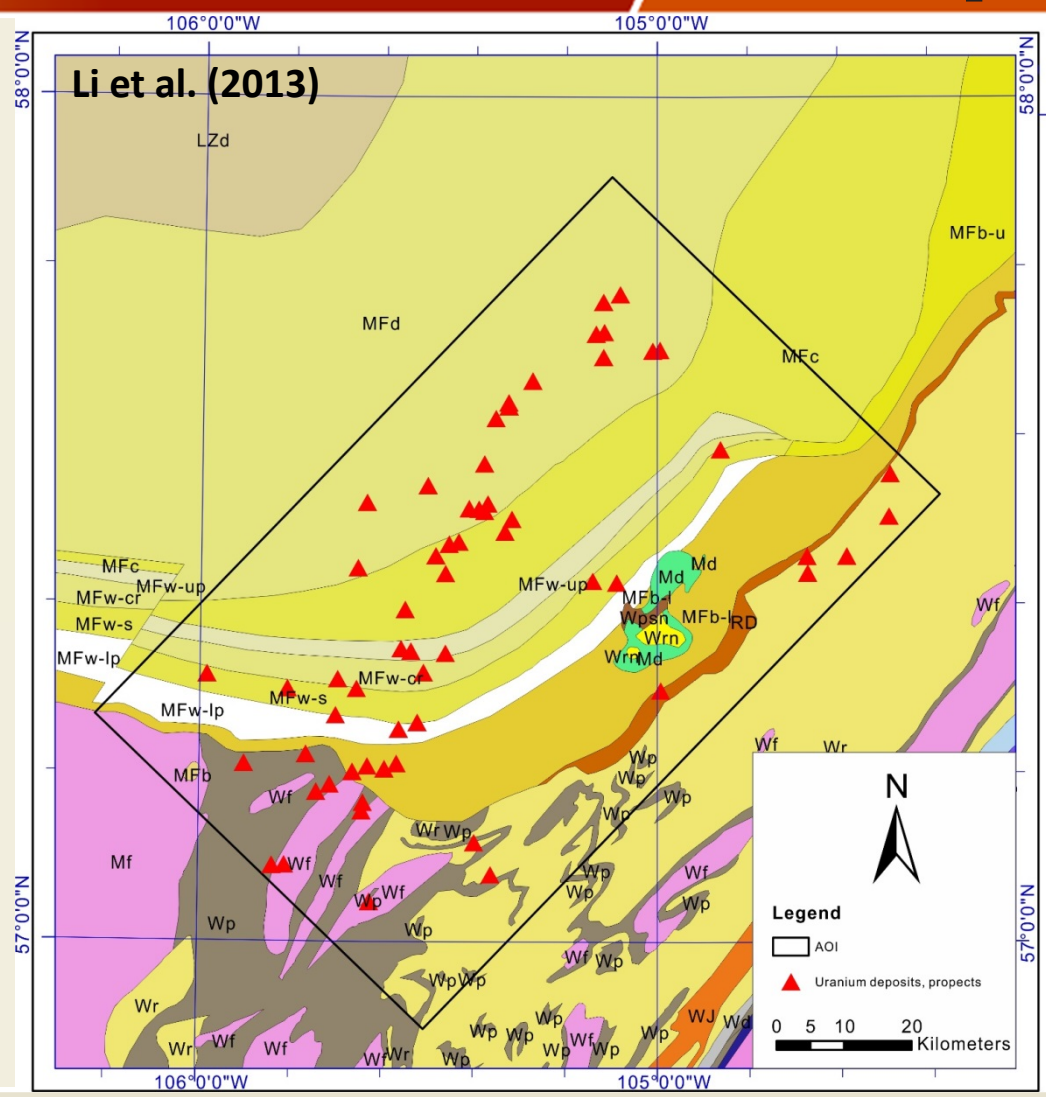


# Fluid-structural relationships and 3D modelling, SE Athabasca Basin

Zenghua Li, Kathryn Bethune, Guoxiang Chi, Sean Bosman, Colin Card

Evaluating the spatial configuration of basement structures, the unconformity surface and younger fault sets, as well as clay alteration patterns in relation to lithology and structure, to model where, when and how U-bearing fluids travelled

**GSC Open File # 7436,  
GAC-MAC 2013 & 2014**

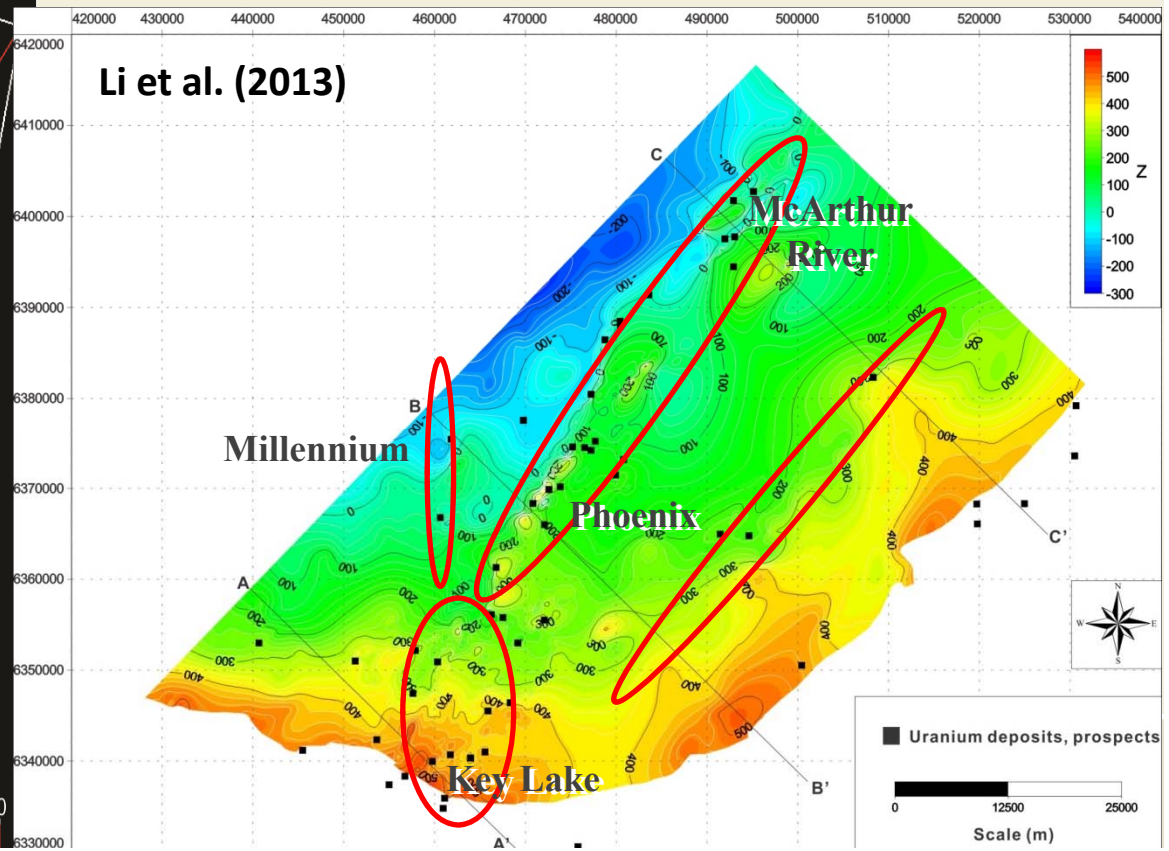
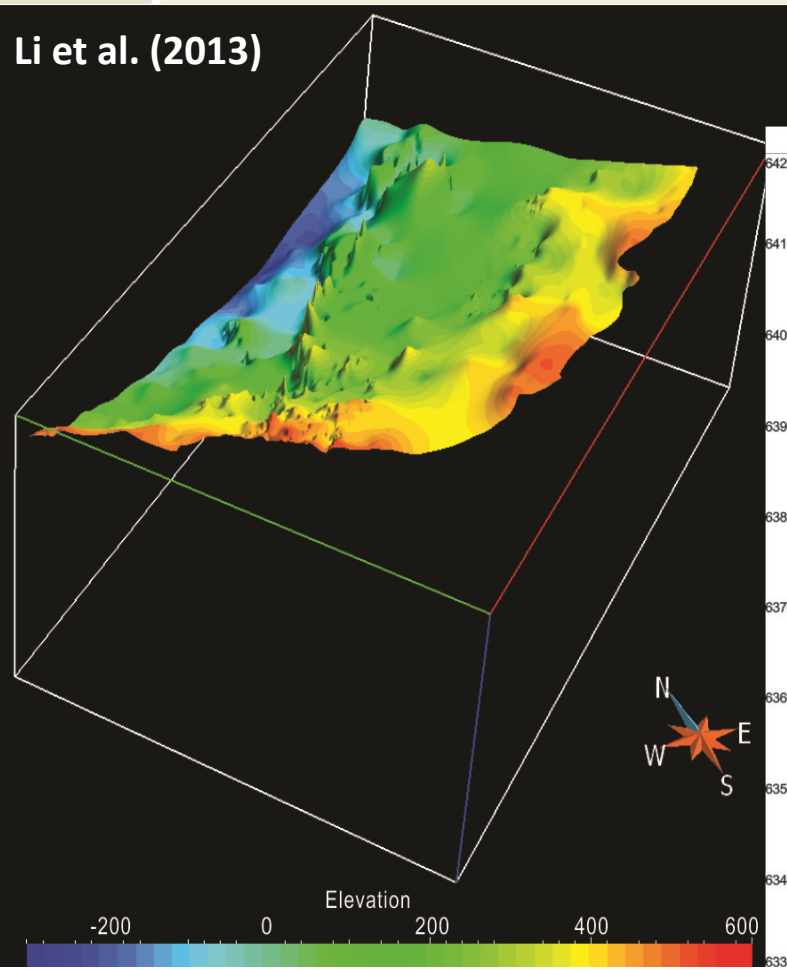




# Fluid-structural relationships and 3D modelling, SE Athabasca Basin

Nearly all the deposits & prospects are associated with topographic features visible on the unconformity surface. The features are a function of three principal factors:

- 1) pre-Athabasca group ductile faulting;
- 2) differential weathering/erosion;
- 3) post-Athabasca fault reactivation, localized in pre-existing, graphite-rich ductile shear zones.

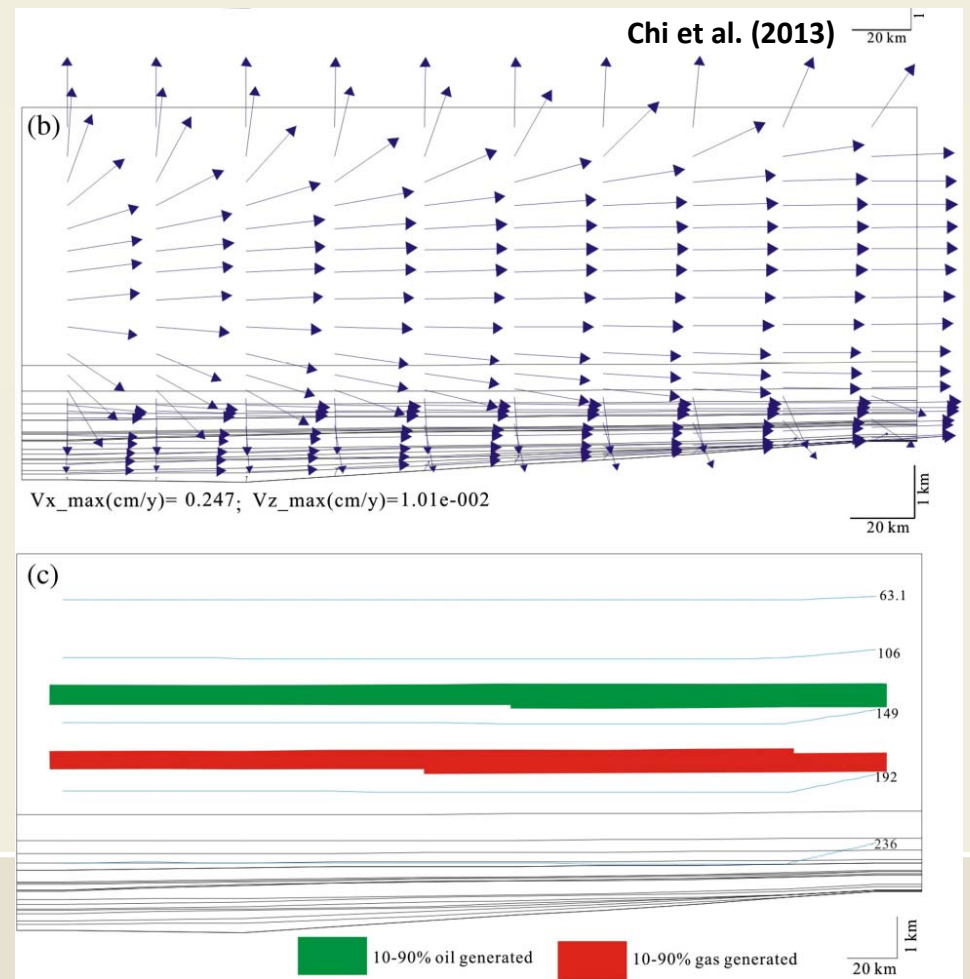
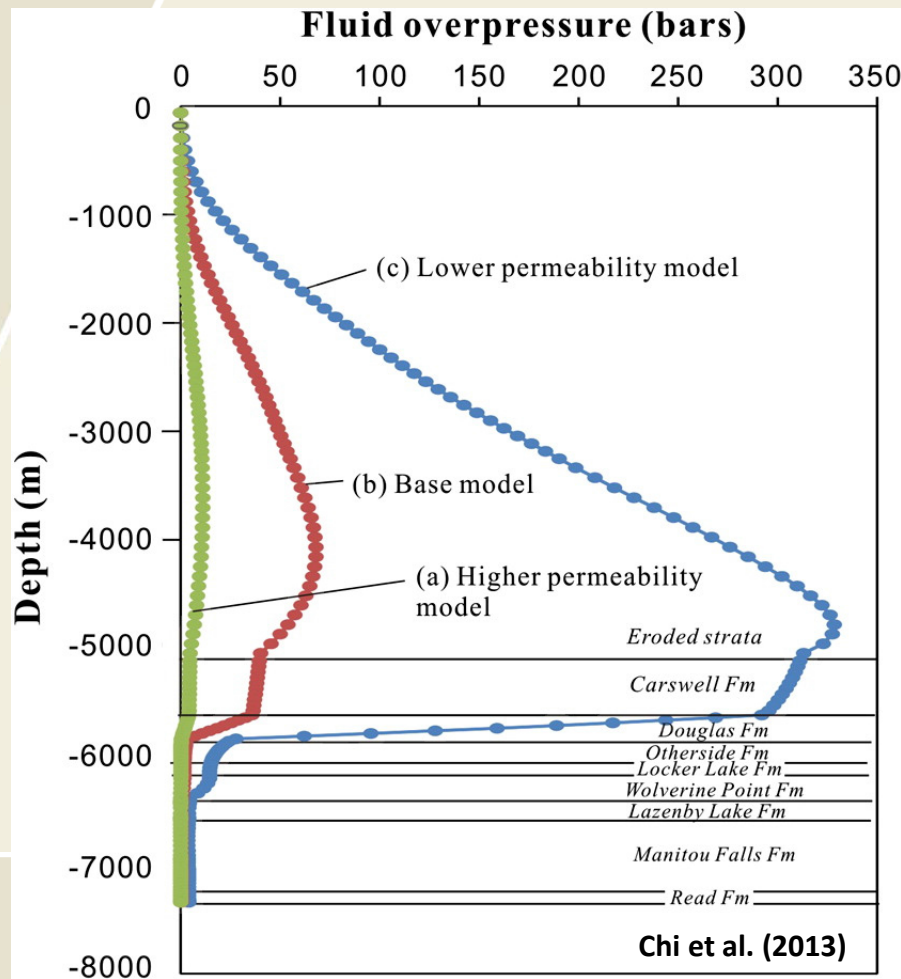




# Fluid-structural relationships and 3D modelling, SE Athabasca Basin

Chi et al., (2013)  
J. Geochem. Explor.  
(doi:10.1016/j.gexplo.2013.10.015)

Using moderate permeabilities (base model), fluid overpressures may have caused oil generated from the Douglas Fm at the top of the Athabasca Group to migrate downwards to the sites of U precipitation, as suggested by biomarkers studies.





## Summary & Significance

### Critical Factors:

*Reinforcement of historical models and research using modern techniques*

- Graphite depletion in immediate basement may have released gases ( $\text{NH}_4$ ,  $\text{CH}_4$ ,  $\text{N}_2/\text{H}_2$ ) for reduction of U (Pascal et al.)
- Mg and Fe isotopic compositions record clay formation (Mg) and redox reactions (Fe; Potter et al., Kyser et al.)
  - *Likely more than one process leading to highly efficient U reduction and potential applications for exploration*
- Evidence for U-bearing fluid movement along the P2 fault – localization of ore related to presence of an efficient reductant (Adlakha et al.)
- Topography of the unconformity likely focused fluid flow along the base of the sandstone column, as illustrated on the SE corridor of the Athabasca Basin (Li et al.)





## Summary & Significance

### Expressions of deeply-buried mineralization:

- Geochemical signatures related to the deposits can extend 400m vertically from the deposit to the top of the sandstones (Dann et al.)
- Geochemical anomalies in soils and dissolved gases in groundwater overlie deeply buried (ca. 750 m) deposits (Power et al.)
- Geochemical signatures related to hydrothermal alteration and U enrichment processes are visible on the basin-wide scale (Wright & Potter)
- 3D modelling of basin architectures –coupled with fluid-flow modelling can be used to focus future exploration (Chi et al.)



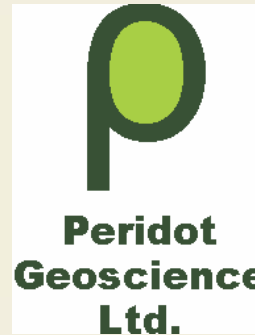




# Acknowledgments

- TGI-4 management & academic researchers
- Industry collaborators and mentors
- Saskatchewan Geological Survey staff

All Open File Reports cited can be downloaded by searching the report number on (<http://geoscan.nrcan.gc.ca>)



Natural Resources Canada

Ressources naturelles Canada

