



**ROSATOM**

State Atomic Energy Corporation "Rosatom"

# **ROSATOM Knowledge Management System**

**Alexey Dub**  
**Director General**  
**ZAO "SCIENCE AND INNOVATIONS"**

**Vienna, IAEA**

**May 2014**



# ROSATOM at Glance

---



- Nuclear Power Complex



- **Applied and Basic Science**



- Nuclear and Radiation Safety

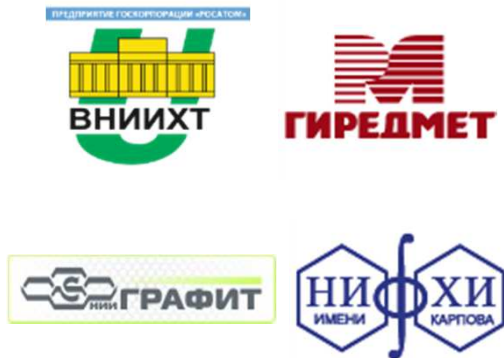


- Nuclear ice-breakers fleet

# ZAO “Science and innovations”



## CHEMISTRY AND TECHNOLOGY BLOCK



ZAO “Science and innovations”

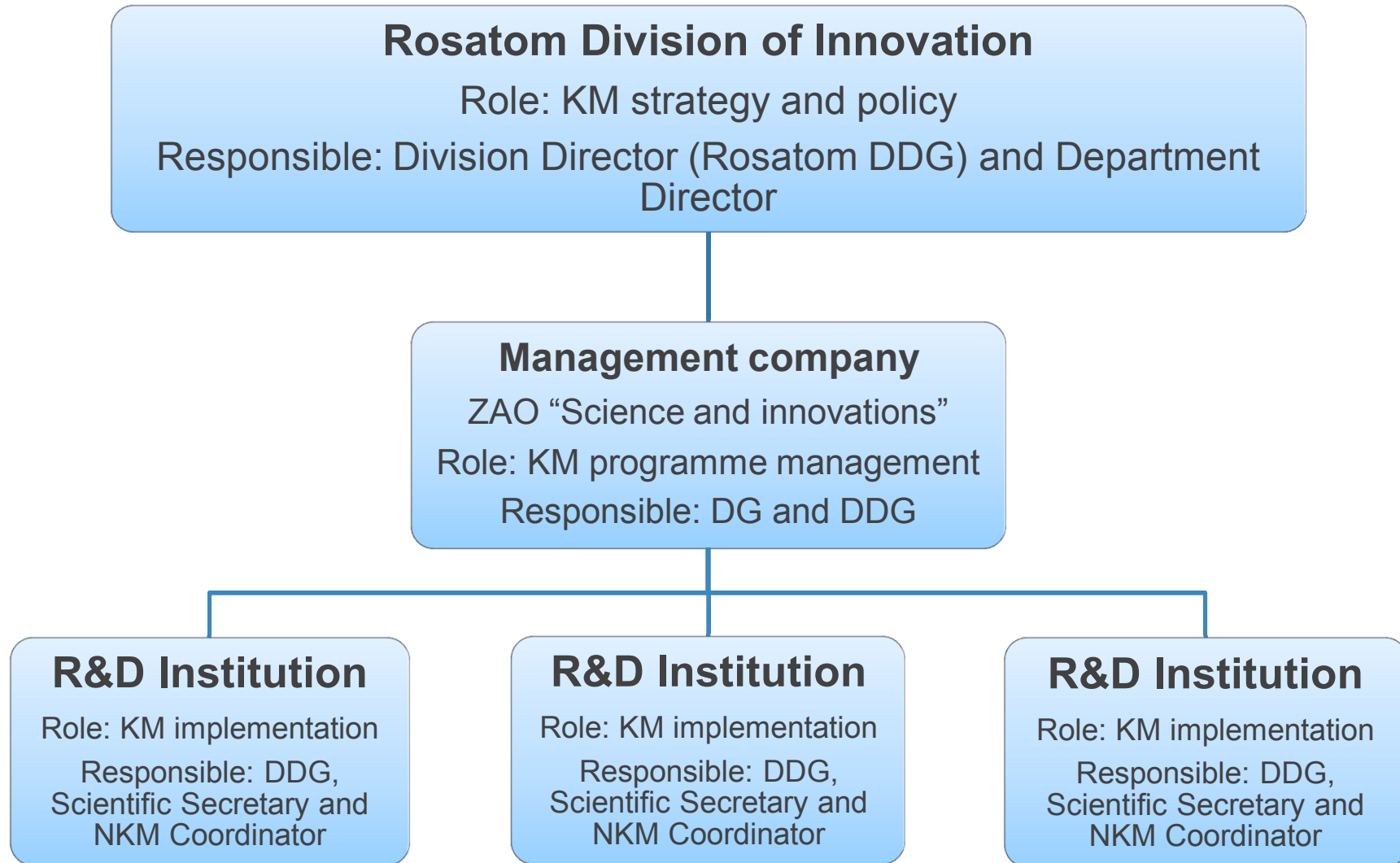
## PHYSICS AND ENERGY BLOCK



## ELECTROPHYSICS BLOCK



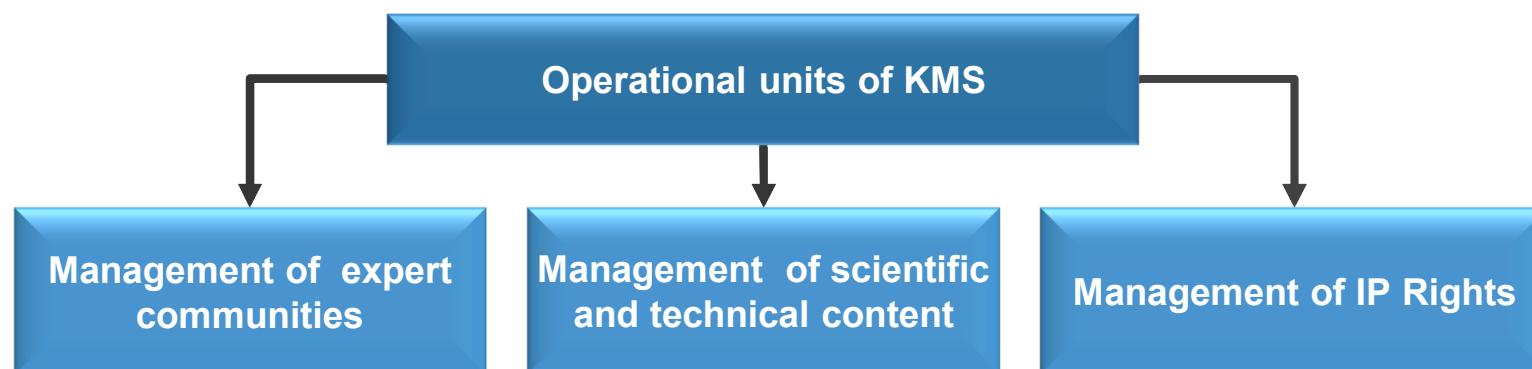
# Roles and Responsibilities



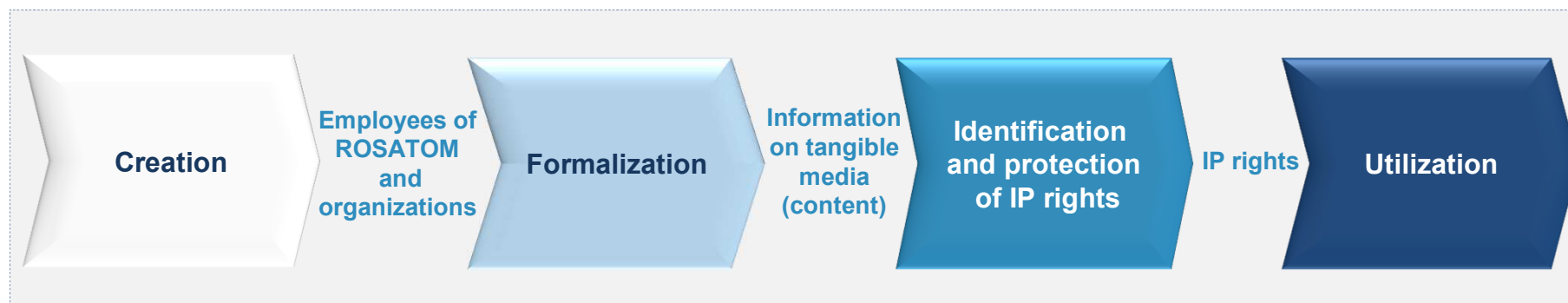
## Nuclear knowledge management from idea to commercialization!



# Model of ROSATOM KMS

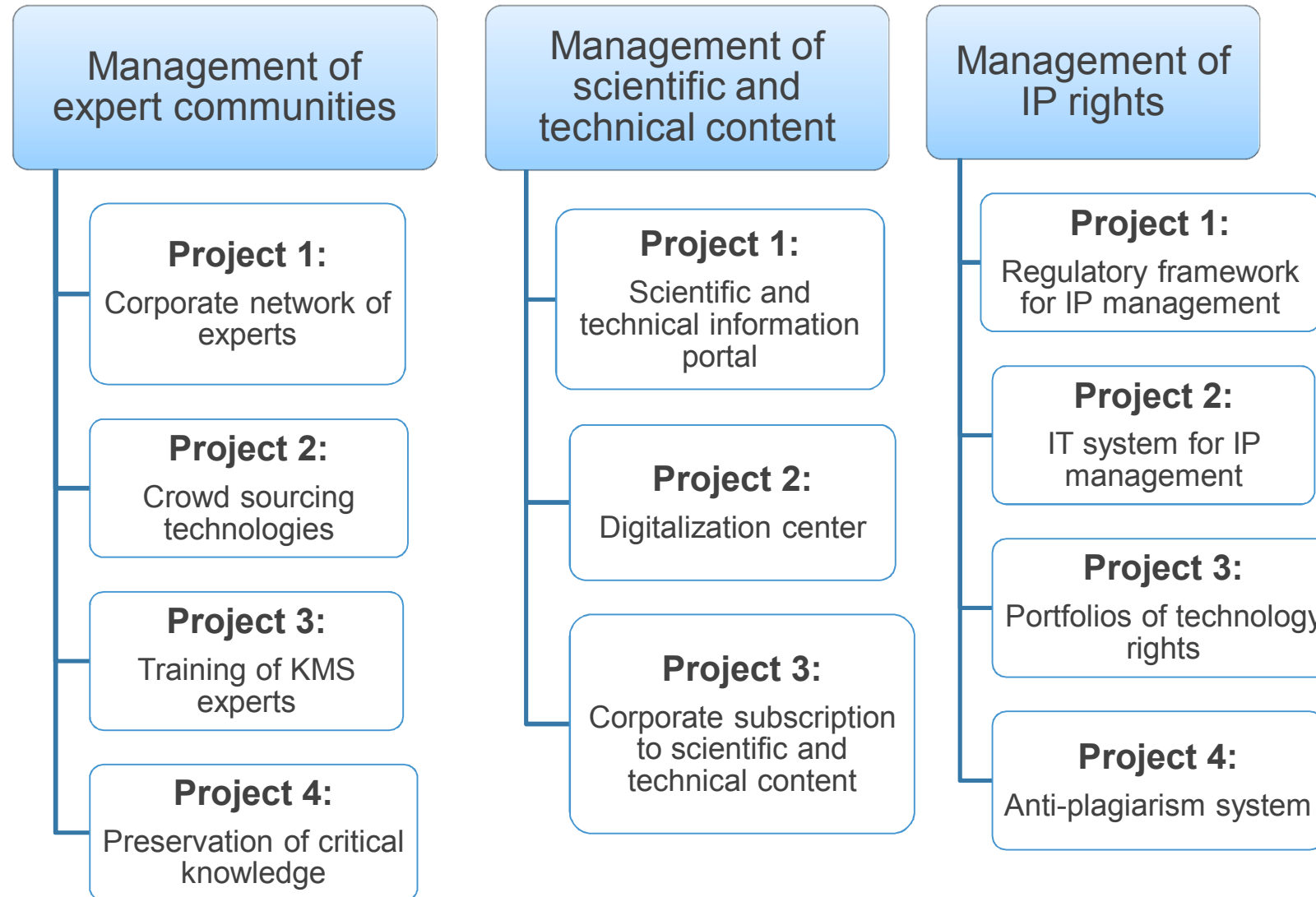


## Life-cycle of knowledge



\*KMS – Knowledge Management System

# ROSATOM KM Programme



## KEY PROJECTS

- Corporate network of experts
- Crowd sourcing technologies
- Preservation of critical knowledge
- Training of KMS experts



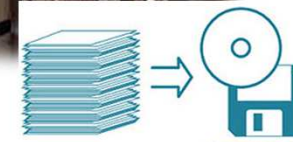


# Management of Scientific and Technical Content



## KEY PROJECTS

- Scientific and technical information portal
- 2 Digitalization centers
- Corporate subscription to scientific and technical content

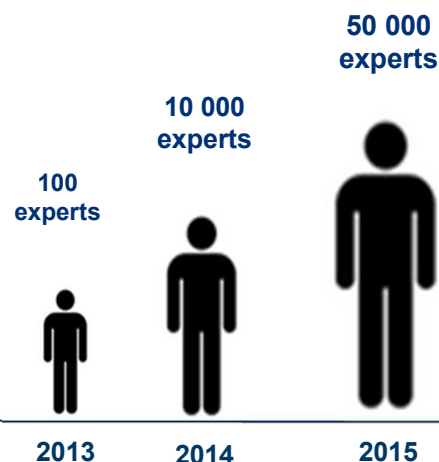


## KEY PROJECTS

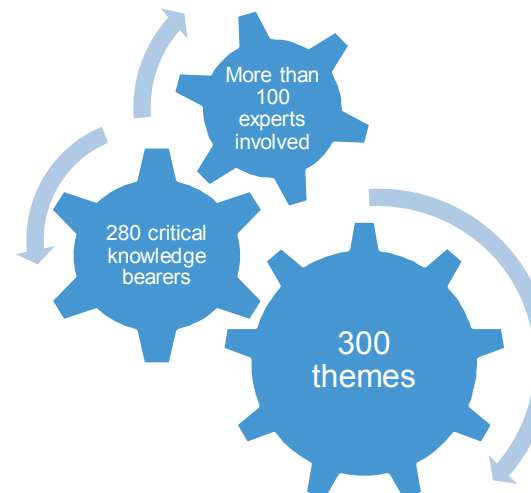
- Regulatory framework for IP management
- IT system for IP management
- Portfolios of technology rights
- Anti-plagiarism system



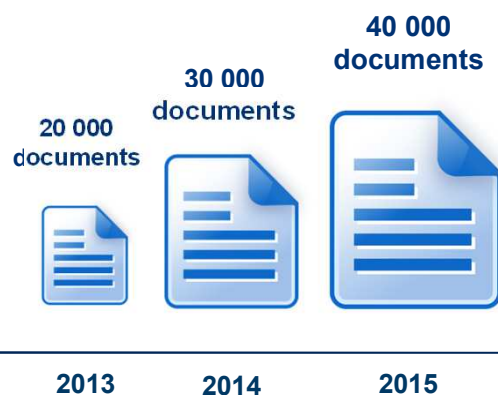
# Key Figures



**Experts involved in corporate network**



**Critical Knowledge Preservation**



**Scientific and technical portal**

**In reporting year 2013,  
patent activity of  
organizations increased  
more than  
20 %**

**Number of results of  
intellectual activities  
under legal protection  
increased more than  
15%**



# Success Story

- Leading project for intellectual capital management
- High demand in scientific and educational organizations

## KMS licensee agreement package

- Guidance documents compliant with international standards
- Knowledge management software



# Lessons Learned

**1**

**Build and support knowledge management team**



**2**

**Deploy and configure IT infrastructure**



**3**

**Protect and commercialize corporate knowledge**



**THANK YOU FOR ATTENTION!**