



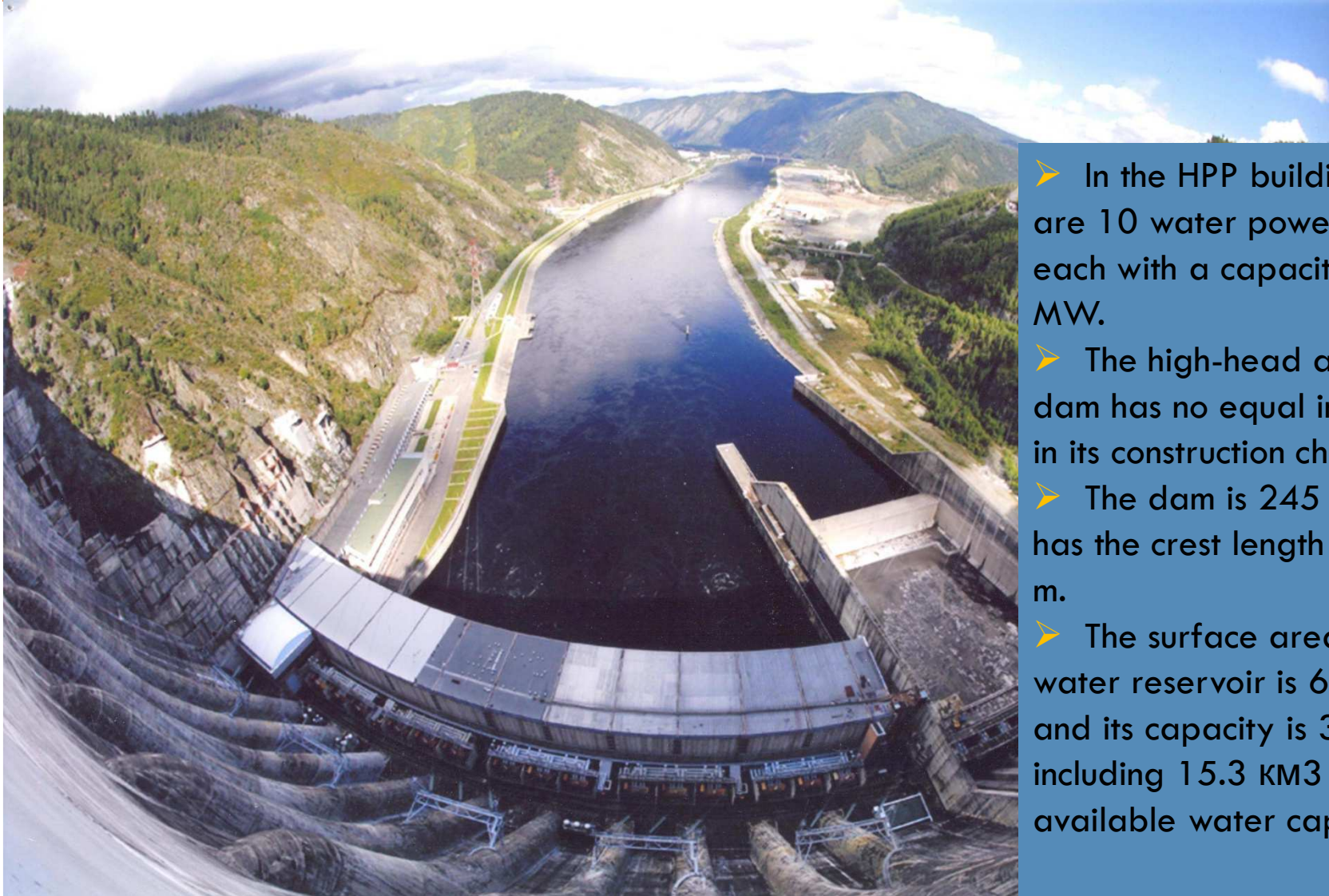
LESSONS LEARNED FROM ACCIDENTS AT HP AND NP PLANTS

Alexander Moskalenko, President, GCE Group

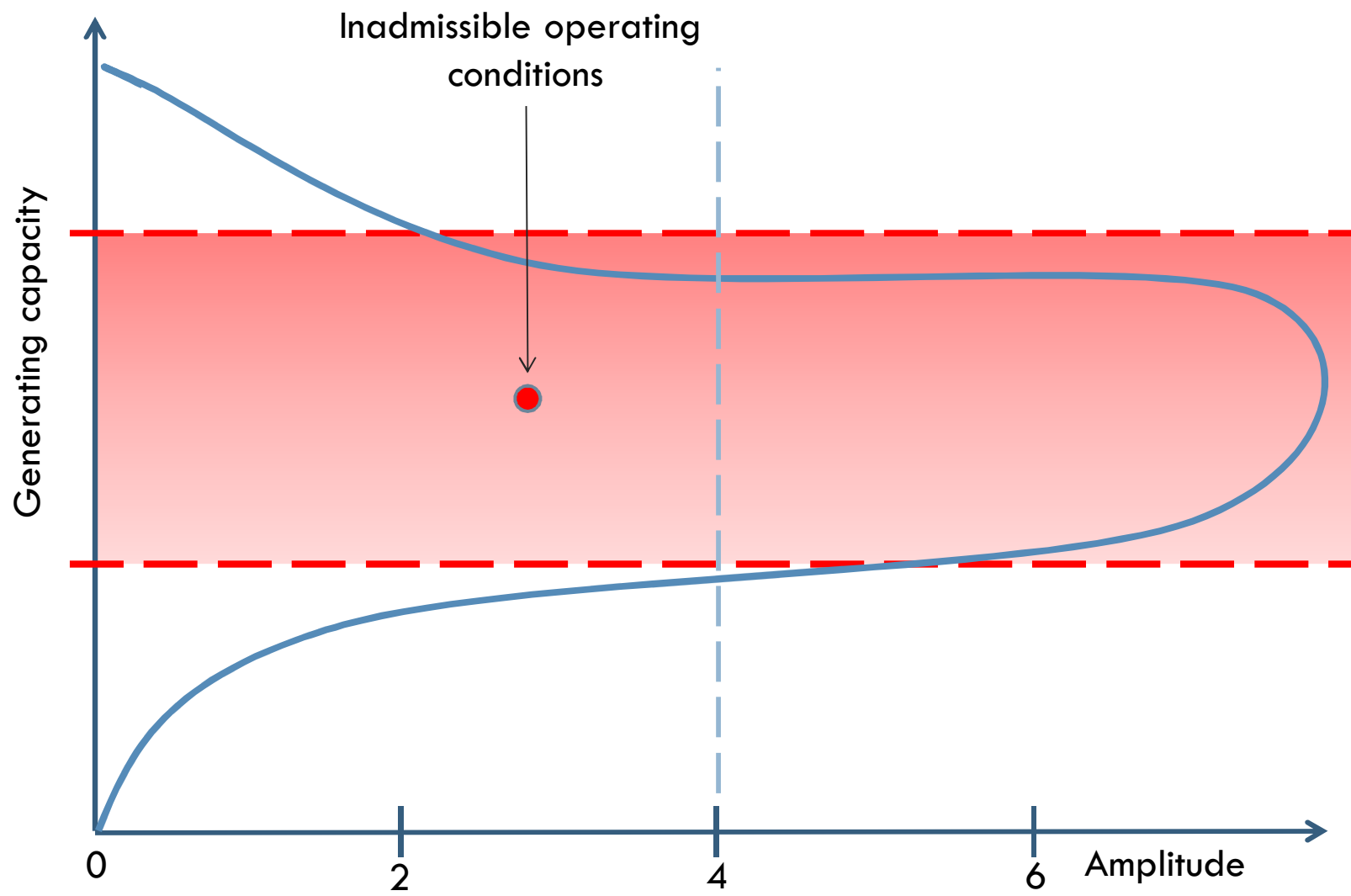
Sayano–Shushenskaya HPP on Map of Russia



Sayano–Shushenskaya HPP

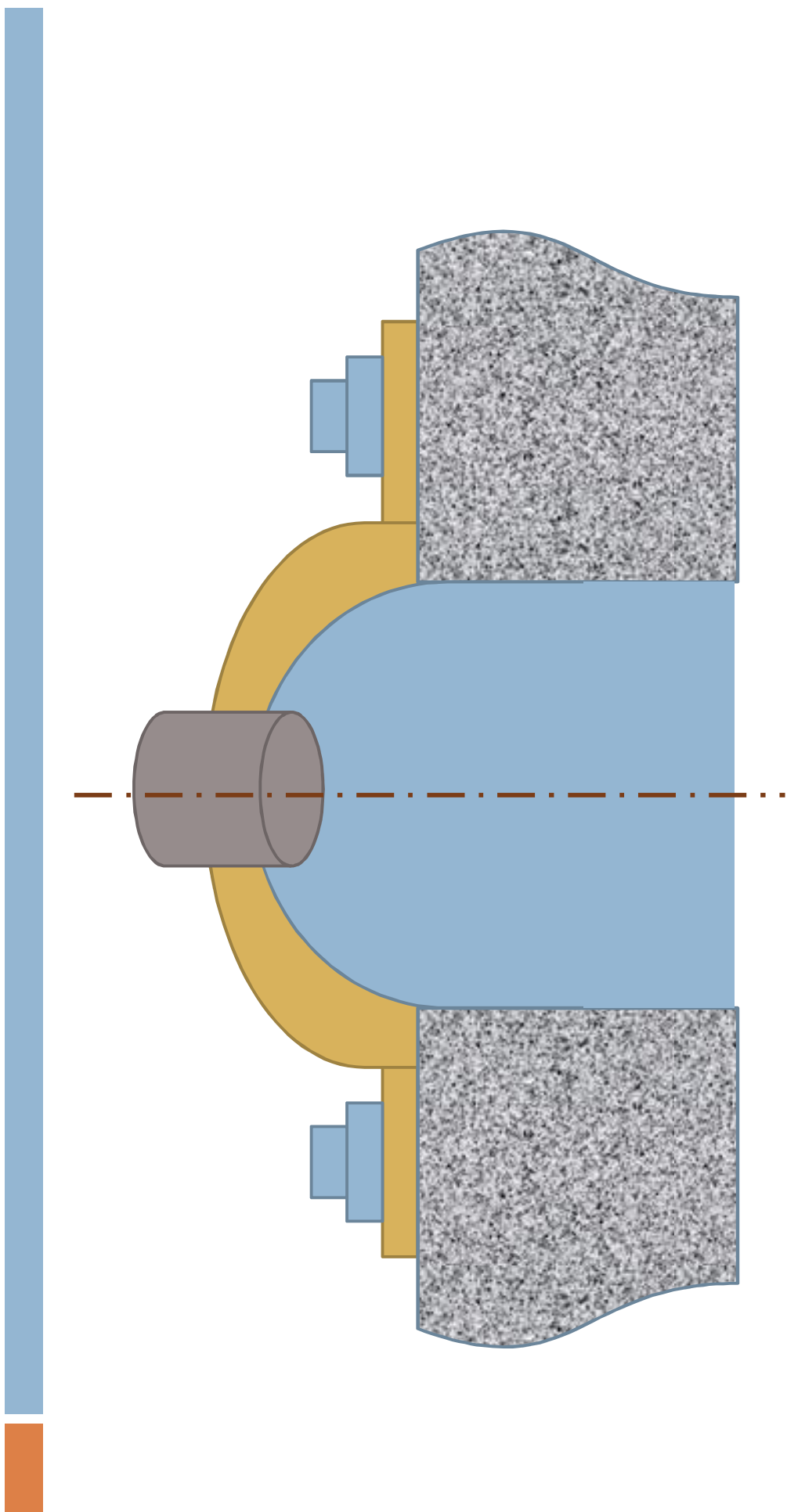


- In the HPP building there are 10 water power plants, each with a capacity of 640 MW.
- The high-head arch-gravity dam has no equal in the world in its construction characteristics.
- The dam is 245 m high and has the crest length of 1074.4 m.
- The surface area of the water reservoir is 621 km², and its capacity is 31.3 km³, including 15.3 km³ of available water capacity.

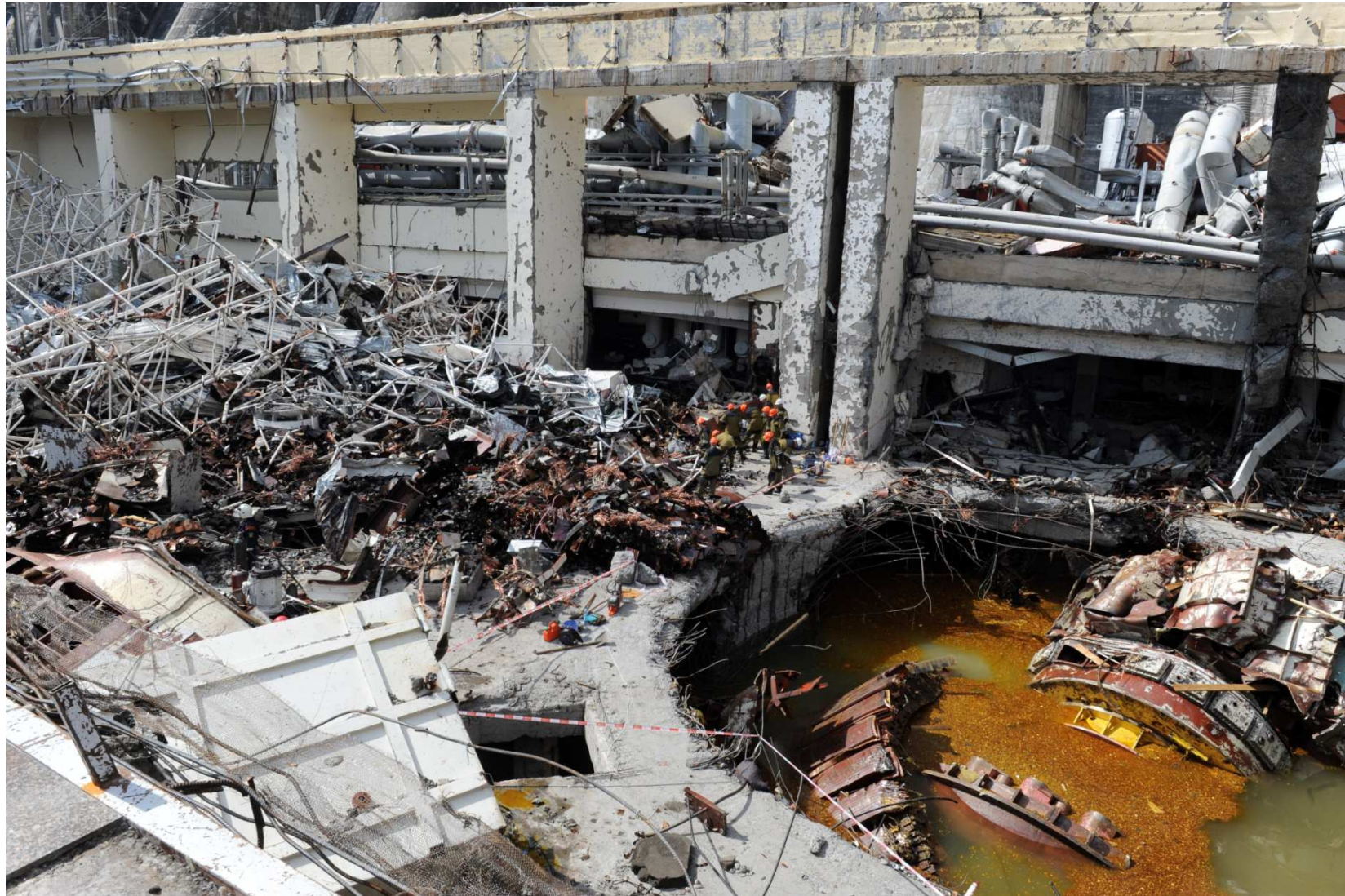


Power Plant Cover





Main Generator Hall of Sayano–Shushenskaya HPP after Accident



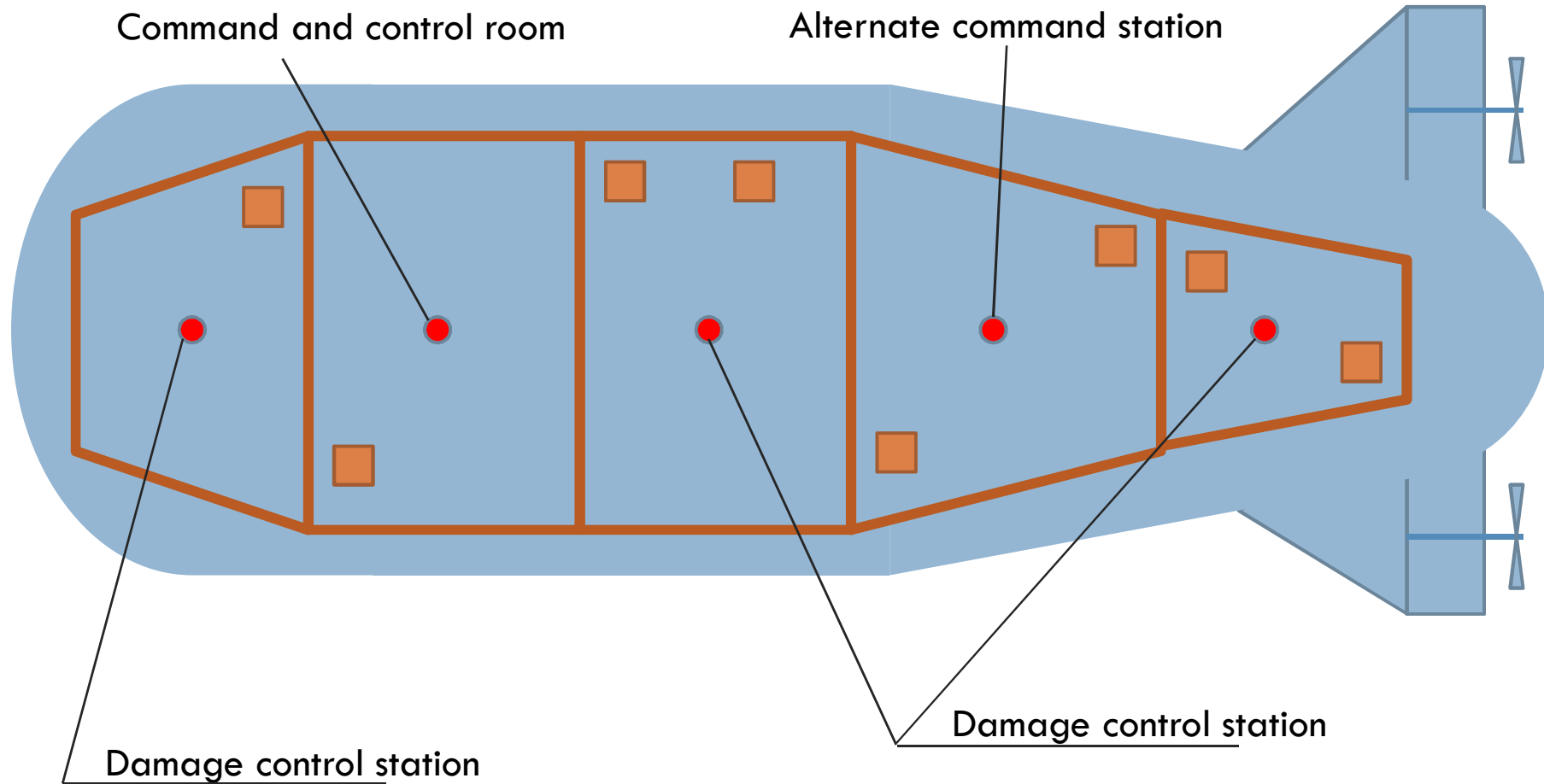
Main Generator Hall of Sayano– Shushenskaya HPP before Accident



Main Generator Hall of Chernobyl NPP before Explosion



Submarine Survivability



■ - Local posts for controlling important systems and components