

DE LA RECHERCHE À L'INDUSTRIE

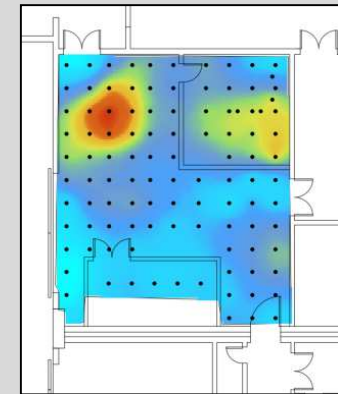
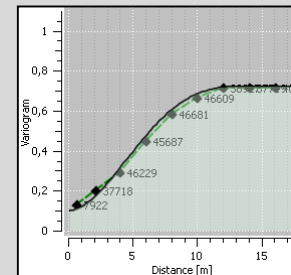
cea

[www.cea.fr](http://www.cea.fr)



International Experts' Meeting on  
Decommissioning and Remediation  
after a Nuclear Accident

## RADIOLOGICAL CHARACTERIZATION OF ACCIDENT-DAMAGED FACILITIES AND SITES

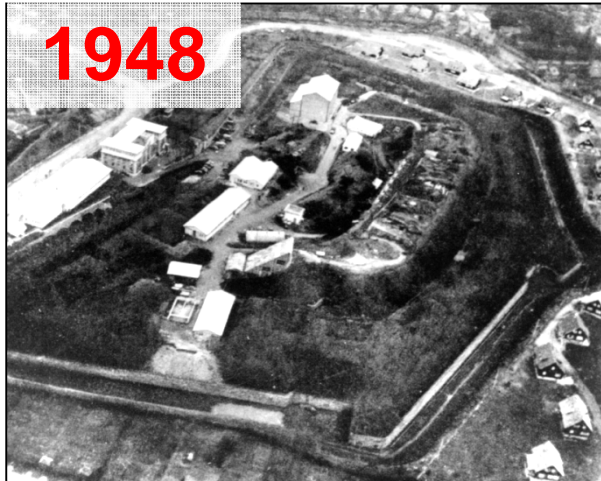


Yvon DESNOYERS – [desnoyers@geovariances.com](mailto:desnoyers@geovariances.com)

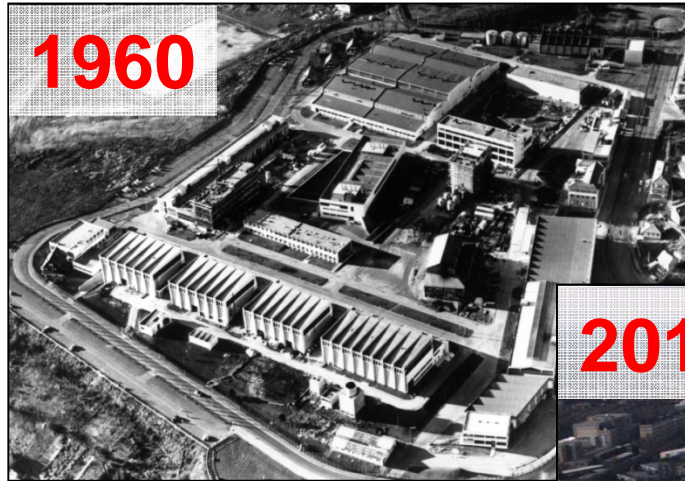
Didier DUBOT – [didier.dubot@cea.fr](mailto:didier.dubot@cea.fr)

Challenges in Planning and Implementation of Decommissioning  
January 30<sup>th</sup>, 2013

# CONTEXT AND METHODOLOGY



1948



1960

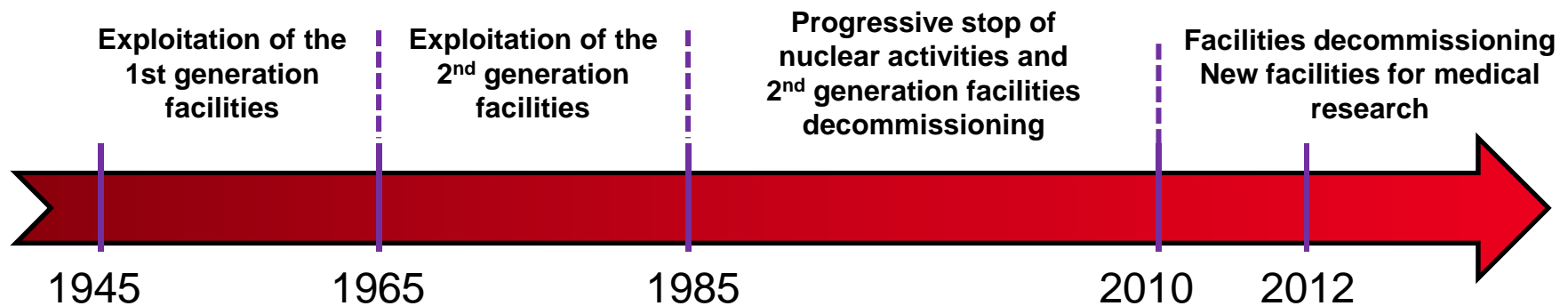
CEA-FAR:  
1st CEA Centre,  
created in 1945



2010

1999: Decision to clean up the site  
→ Remediation Service: SAS

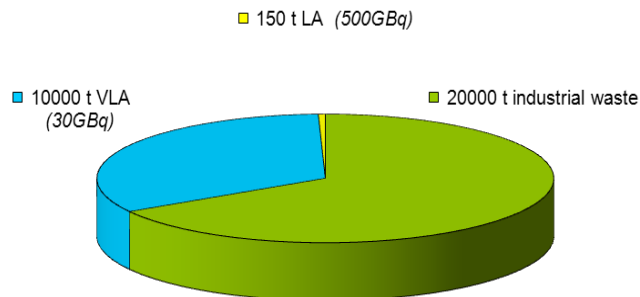
- Clean up of hazardous places done by 2012-2013
- Tools development dedicated to sites and soils remediation
- Expertise in French and foreign sites



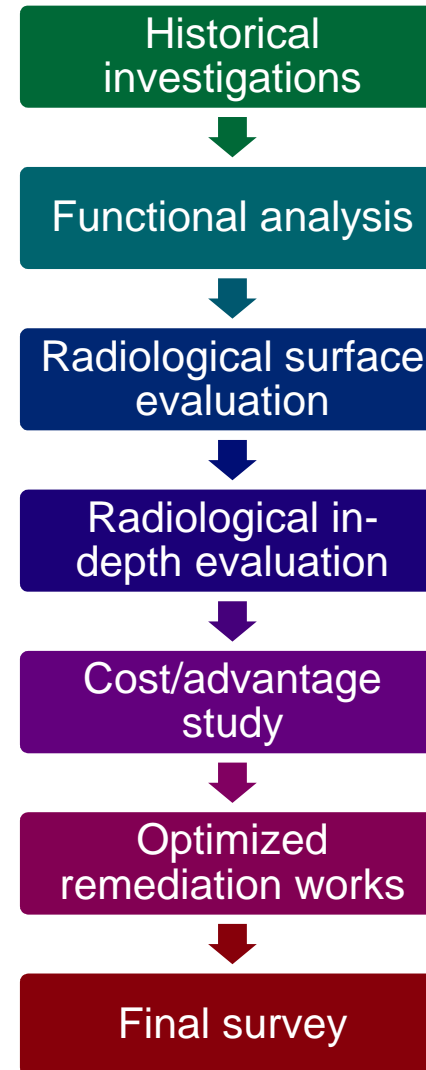
## French context:

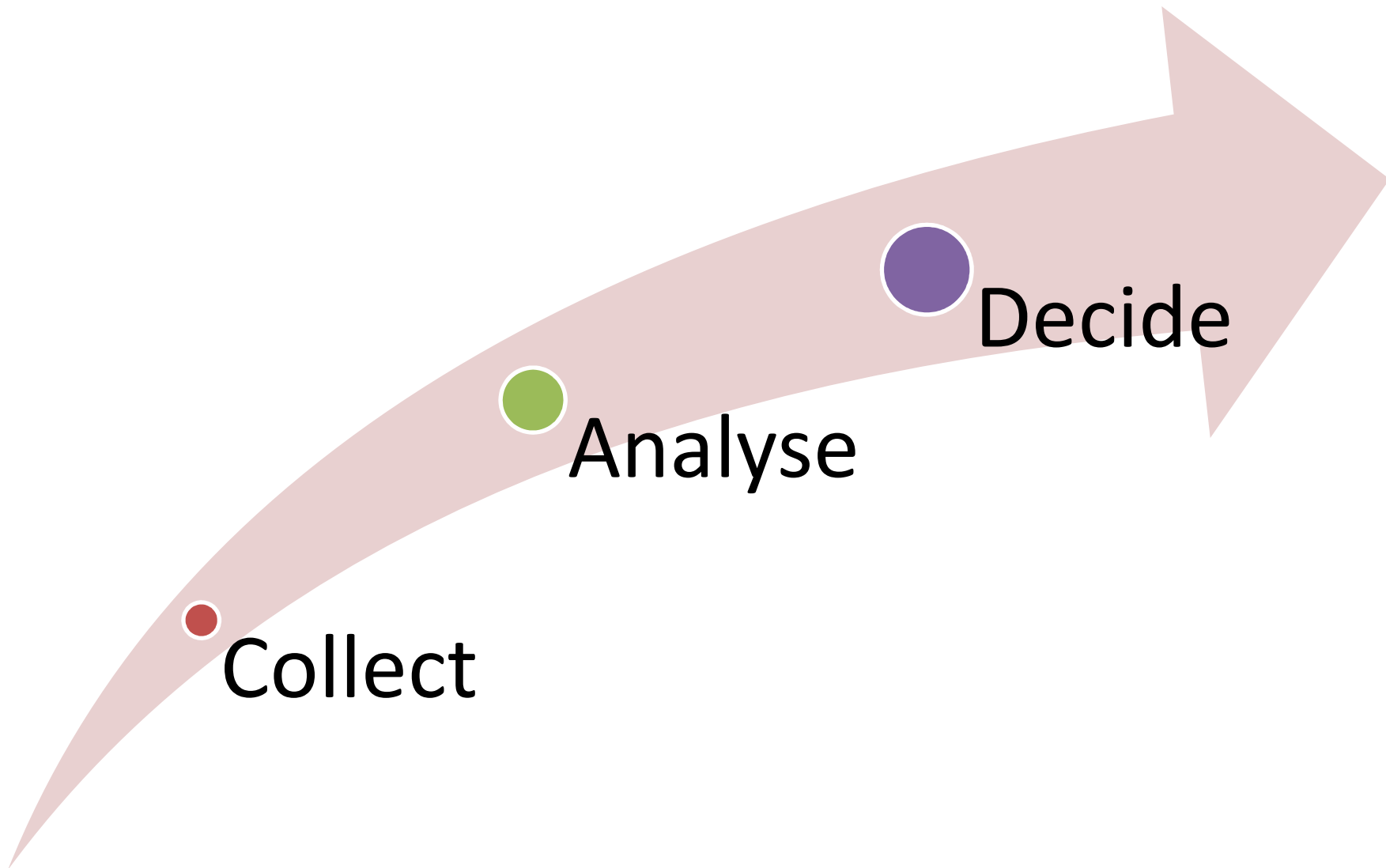
- No remediation level in France for polluted site and soils
- No regulation for soil under and around nuclear facilities
- Optimizing the sanitary impact: between 0.01 and 0.3 mSv/yr
- Necessity to have methods, procedures and reliable tools dedicated to sampling

### Waste production

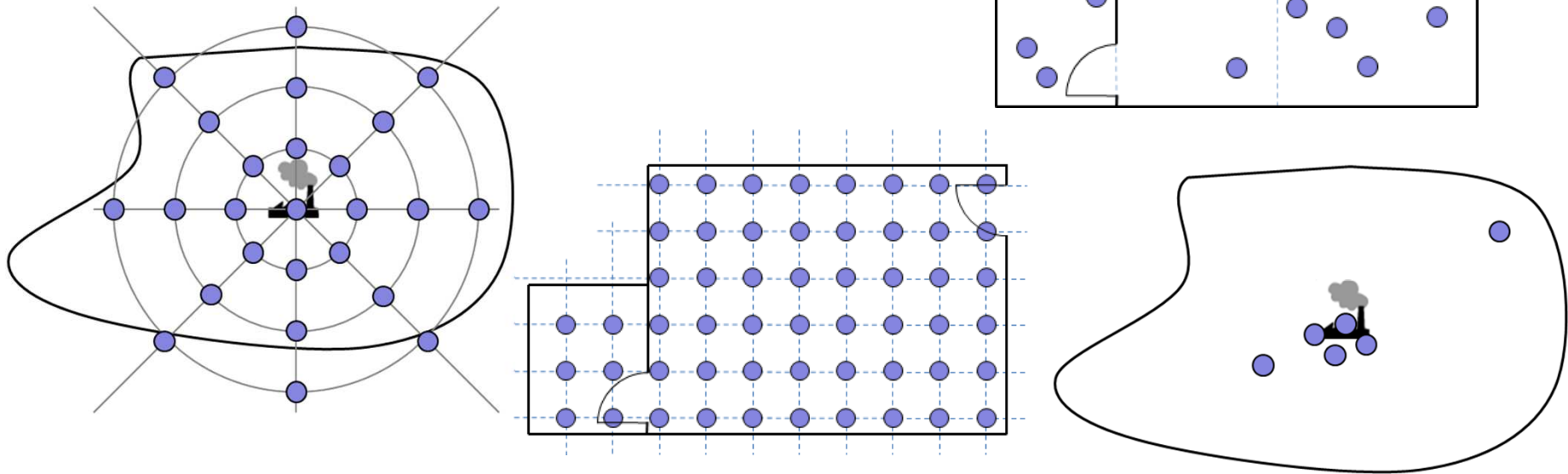


Clean-up Process of CEA/FAR Site → 45 M€





## Sampling plan selection and optimization according to the evaluation objective



- **Circular grid:** Extension of contamination diffusion (plume models)
- **Regular mesh:** Mapping the contamination / Hot spot identification
- **Random design:** Statistical tests and results (Marssim, Wilks...)
- **Exhaustive survey, Judgmental approach...**



## TWO EXPERTISE VEHICLES

### LAMAS

- Acquisition cell: gamma spectrometry, GPS, atmospheric, weather
- Sample treatment cell (radiochemistry)



→ *Post-accidental intervention and remediation work monitoring*

### VEGAS

- 4 WD vehicle with speed control system and differential GPS for real-time positioning, submetric accuracy
- Radiation measurement devices

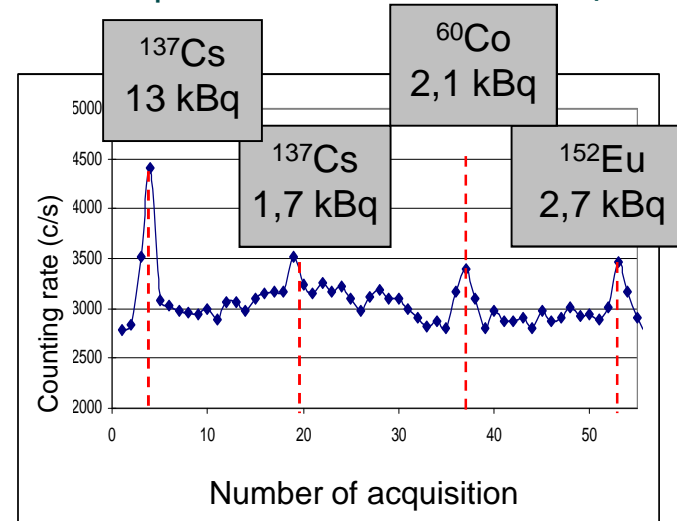


→ *Initial mapping of contaminated sites, localization of « hot spots »*

# VEGAS: DETECTION PERFORMANCES



For a punctual source at 5km/h



Geometry and extent of surface contamination can be defined with good accuracy

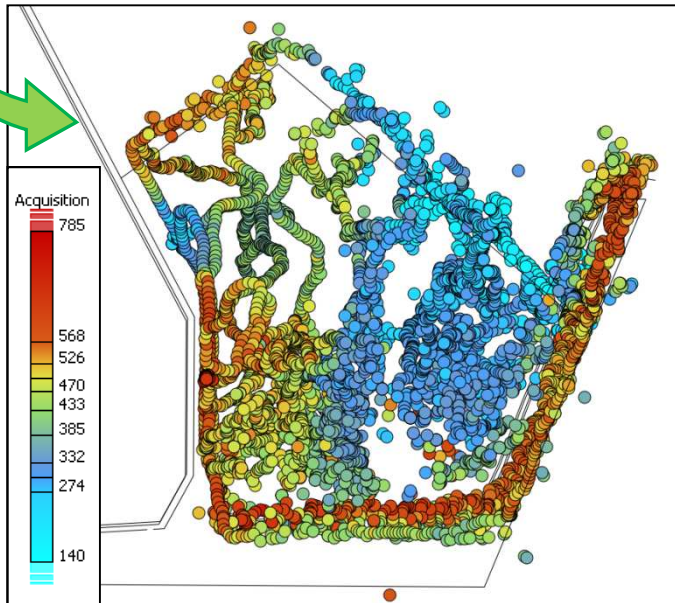
Relevance for quick identification and characterization of areas with high counting rates (1 ha/hour)

Radionuclides	Punctual source (kBq)		Tar roads (kBq/m <sup>2</sup> )		Grounds (kBq/kg)	
	2.6 km/h	5 km/h	2.6 km/h	5 km/h	2.6 km/h	5 km/h
<sup>137</sup> Cs	3.8	5.9	3.7	5.1	68	95
<sup>60</sup> Co	2.0	3.1	1.9	2.7	36	50

# LIGHT REAL TIME ACQUISITION DEVICE



Complementary way to the use of Vegas in order to characterize difficult areas : forests, narrow places, rugged places...



Simple equipment:  
GPS + NaI 3" connected to a laptop

Detection limit when walking:  
1Bq/g eq.  $^{137}\text{Cs}$



# ONE METHODOLOGY, MANY WAYS TO APPLY



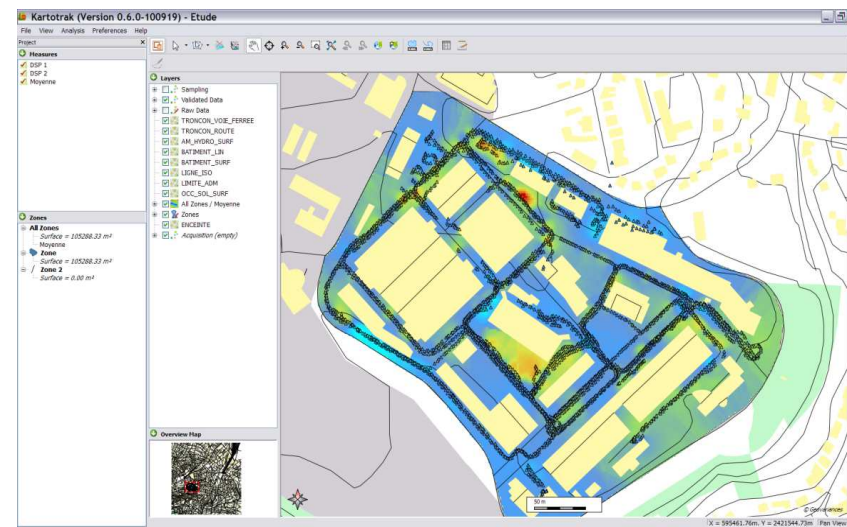
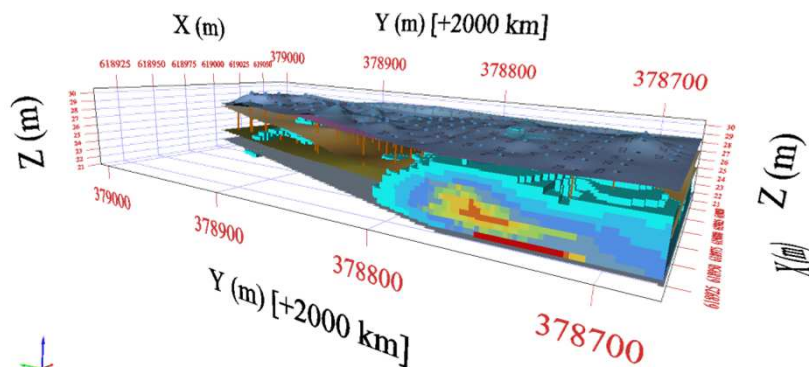
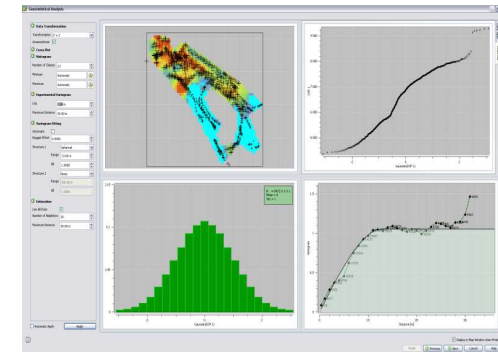
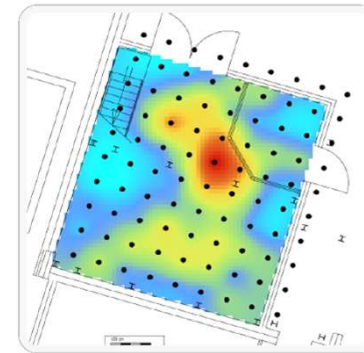
## Mandatory equipment:

- Computer
- GPS device
- Measuring device(s)
- Centralization software
- Training & experience

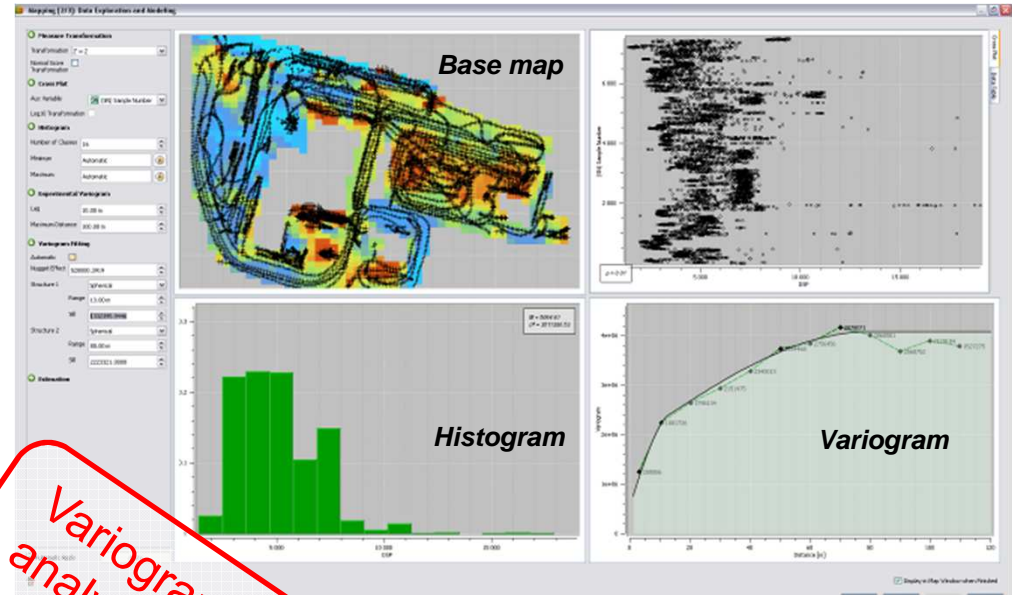


All-in-one software solution for contaminated site characterization  
Born-out from a partnership between CEA and Geovariances

- Integrated workflow based on GIS component and 3D viewer
- Real-time data positioning and acquisition (GPS and measuring devices)
- Data analysis, quality control, contamination mapping and risk assessment based on geostatistics methods



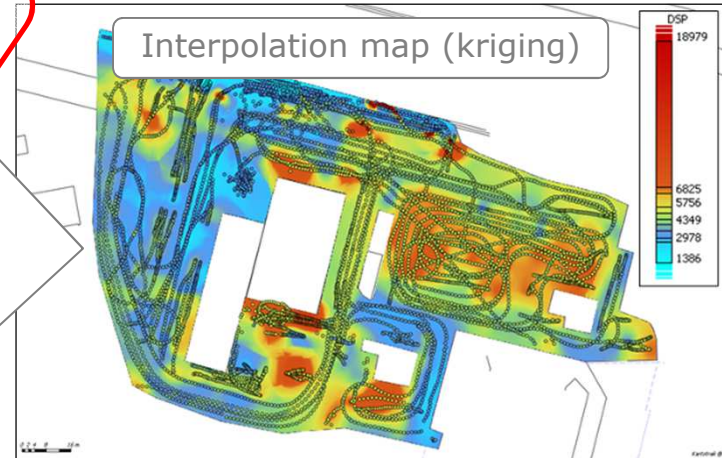
# DATA PROCESSING: GEOSTATISTICS



Variographic analysis and modeling



Integration of the spatial structure of the contamination



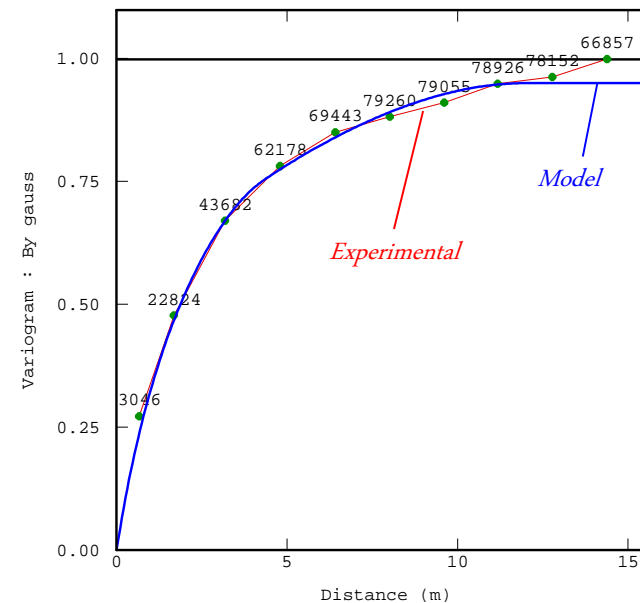
Geo + Statistics: integration of the phenomenon spatial continuity

Main tool of geostatistics: the **variogram**  
(describes the variability between 2 points)

- On average, the difference between two CLOSE measures is LOW
- On average, the difference between two DISTANT measures is HIGH

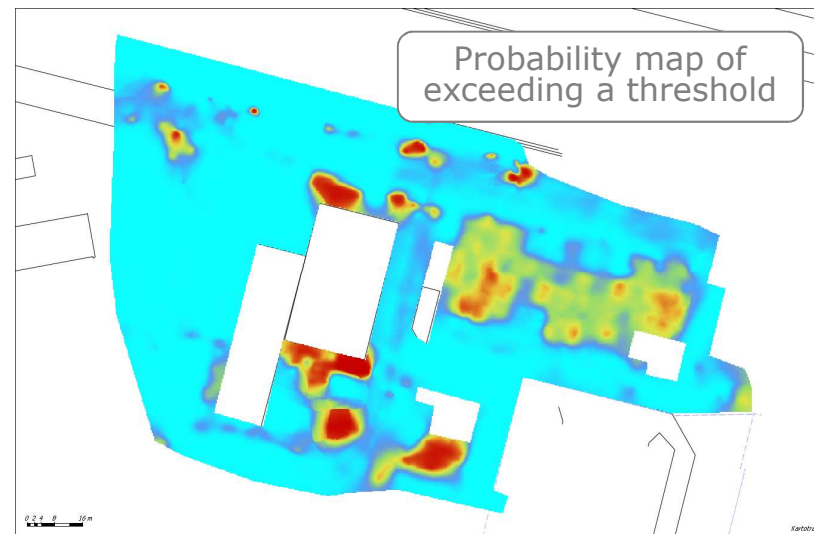
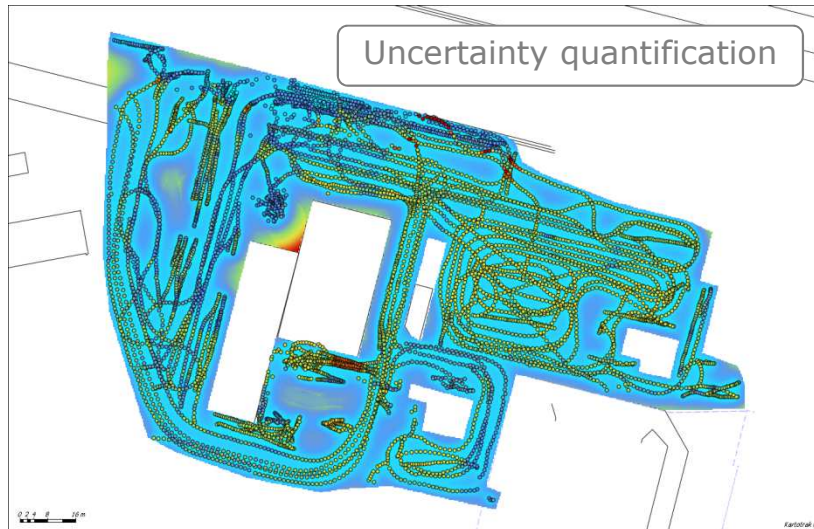
$$\gamma(h) = \frac{1}{2} E[Z(x) - Z(x+h)]^2$$

The way the variogram increases with distance is linked to the phenomenon **spatial continuity**





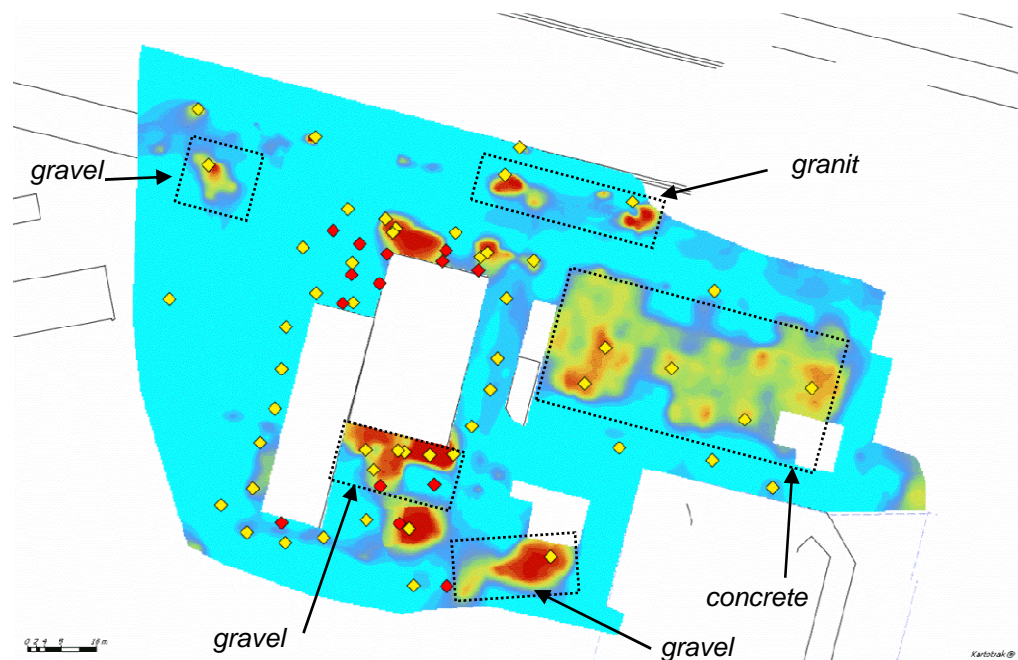


# GEOSTATISTICS: MAPPING RESULTS

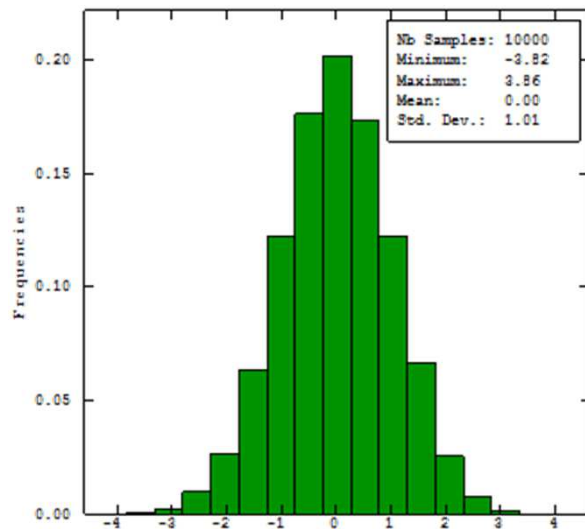
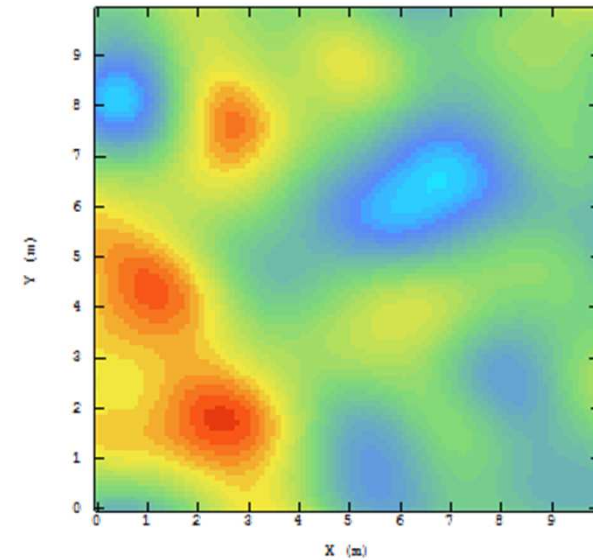
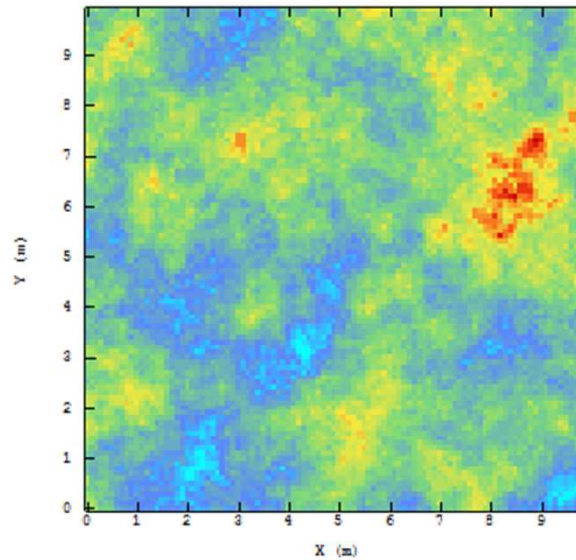
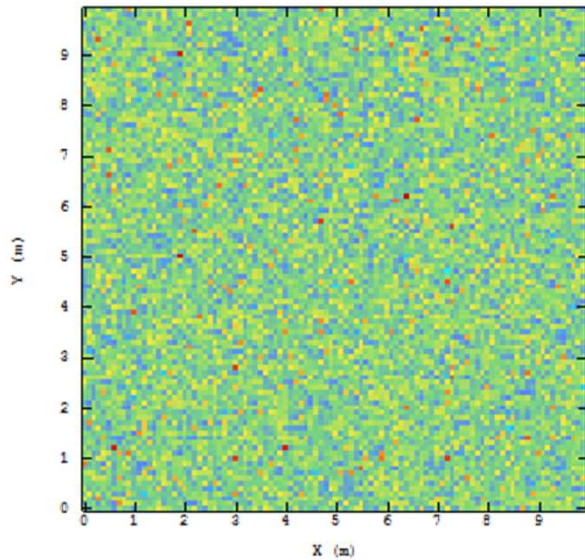


Combined with uncertainty and probability maps, the kriging result helps decide further actions to reduce uncertainty:

- Gamma spectrometry  for nuclide identification (fingerprint)
- Soil samples  for activity quantification
- Drillings...



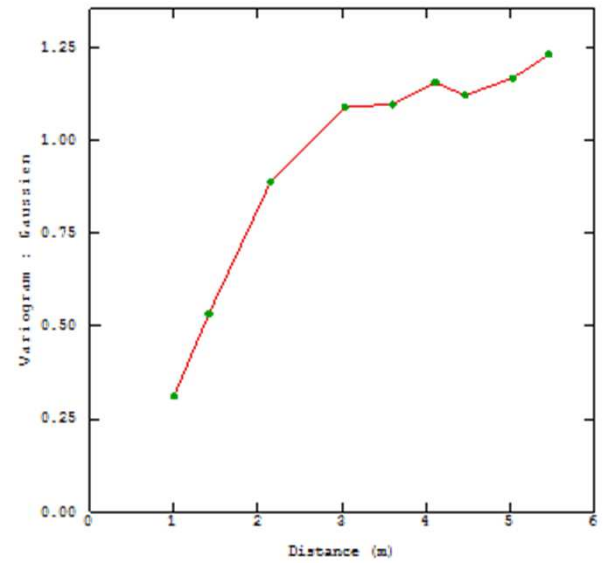
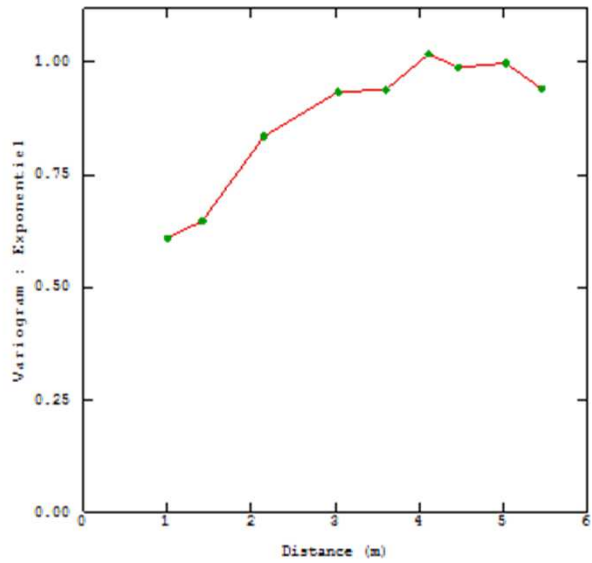
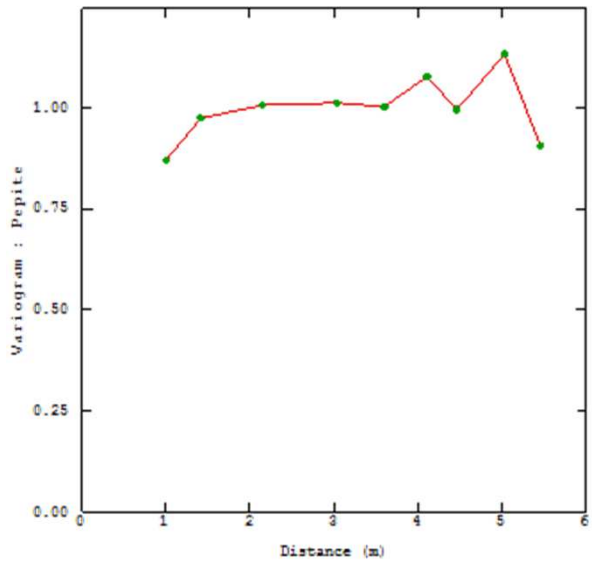
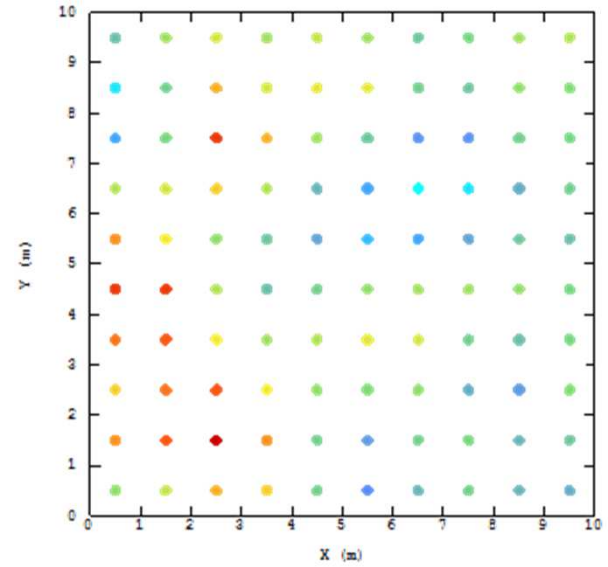
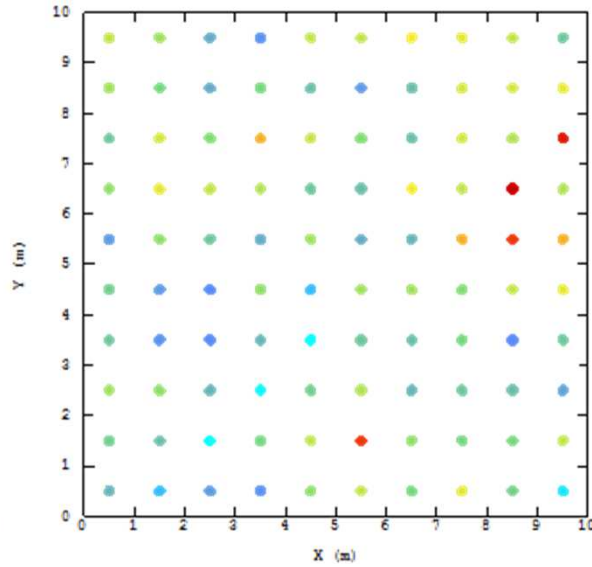
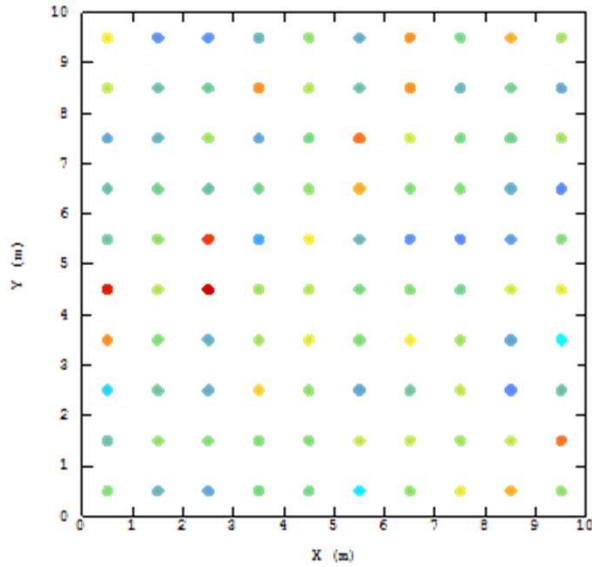
# THREE SPATIAL STRUCTURES



Three spatial representations of the same statistical distribution

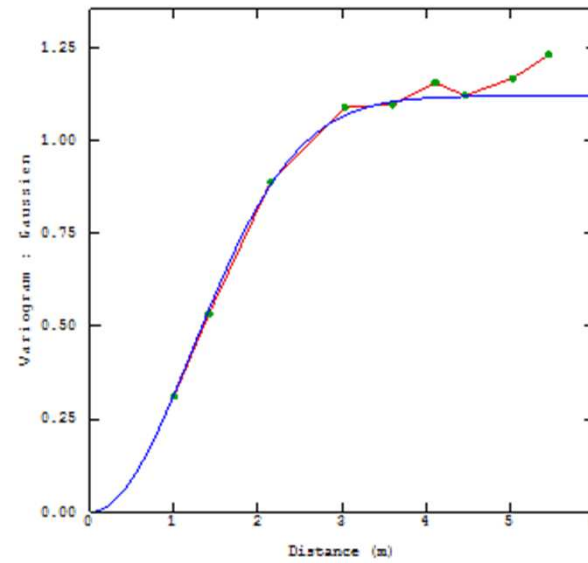
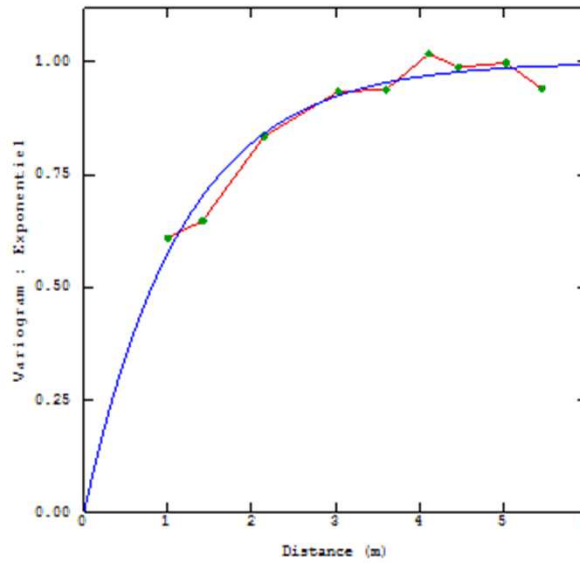
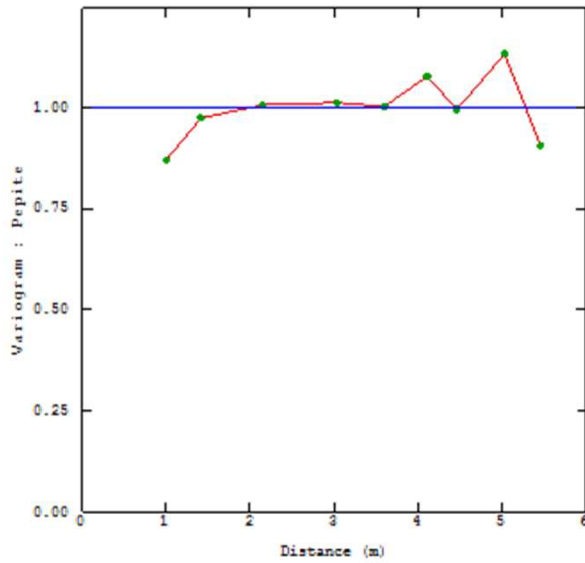
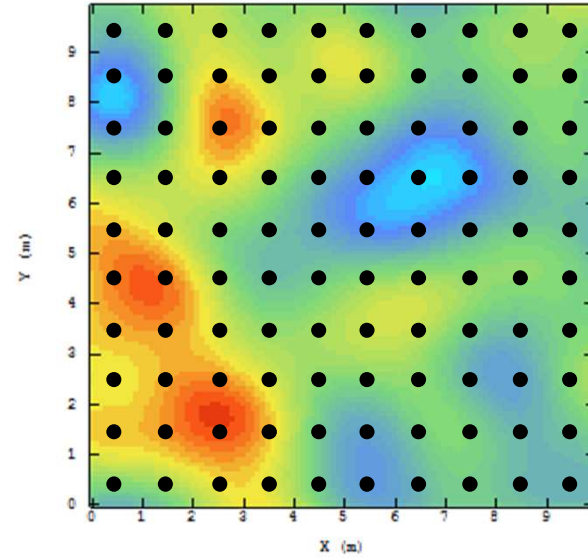
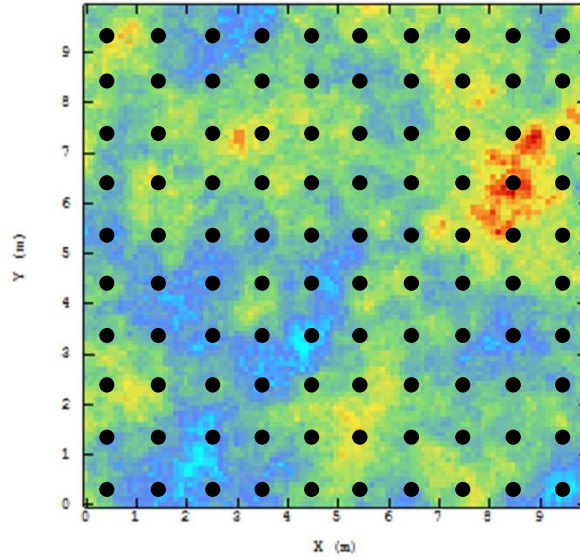
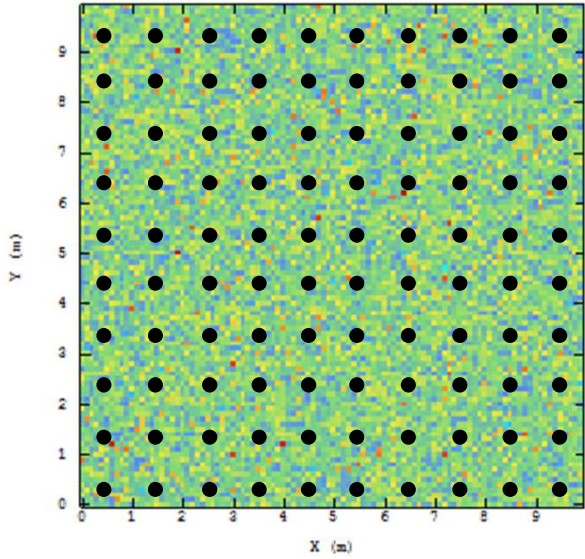
Characterisation of the spatial structures thanks to a regular sampling grid

# THREE SPATIAL STRUCTURES





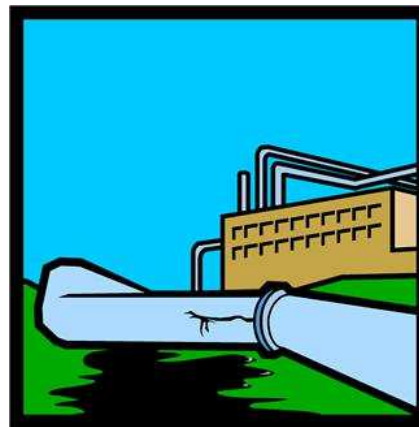
# THREE SPATIAL STRUCTURES



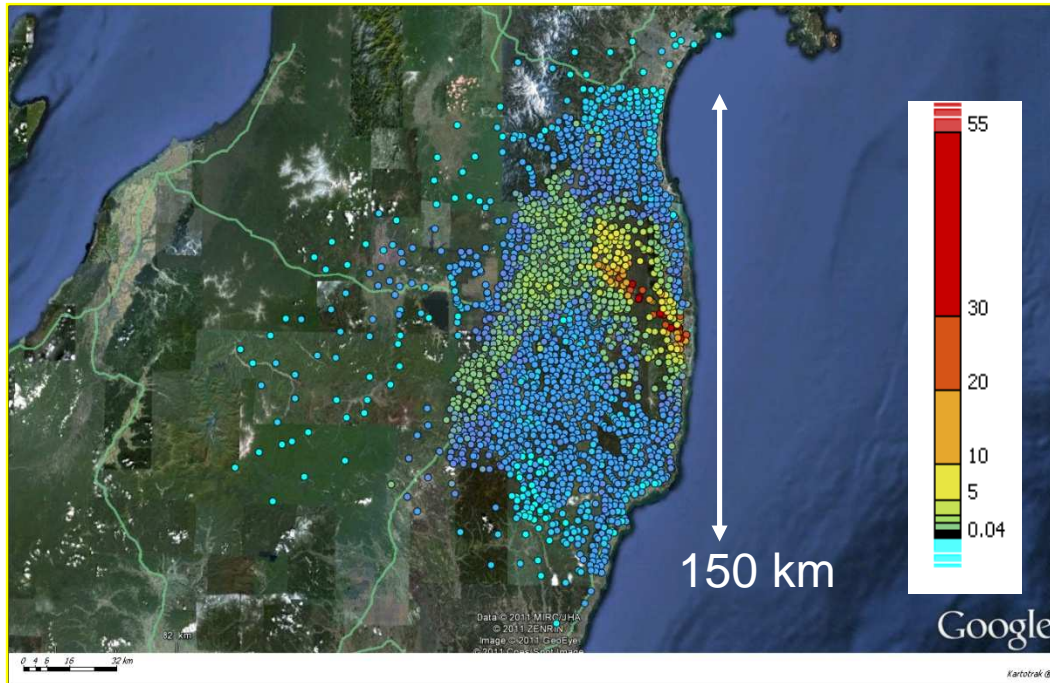


## Geostatistics use at different scales

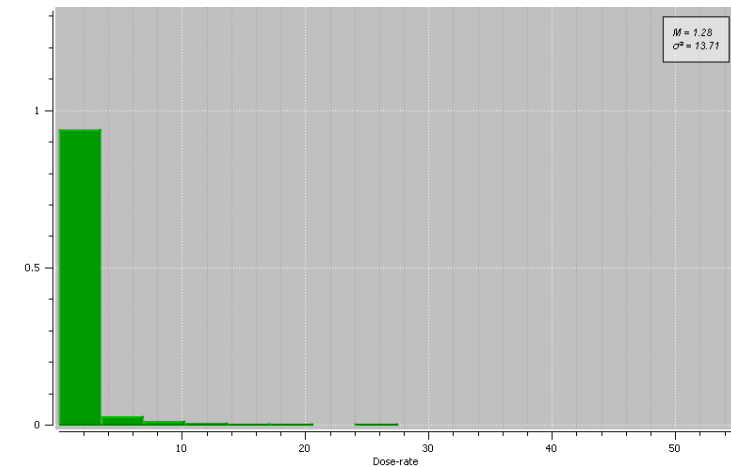
- Regional scale
- Nuclear site scale
- Buildings structures
- In-depth soil contamination
- Other application fields



## Display of the Dose rate data ( $\mu\text{Sv/h}$ )



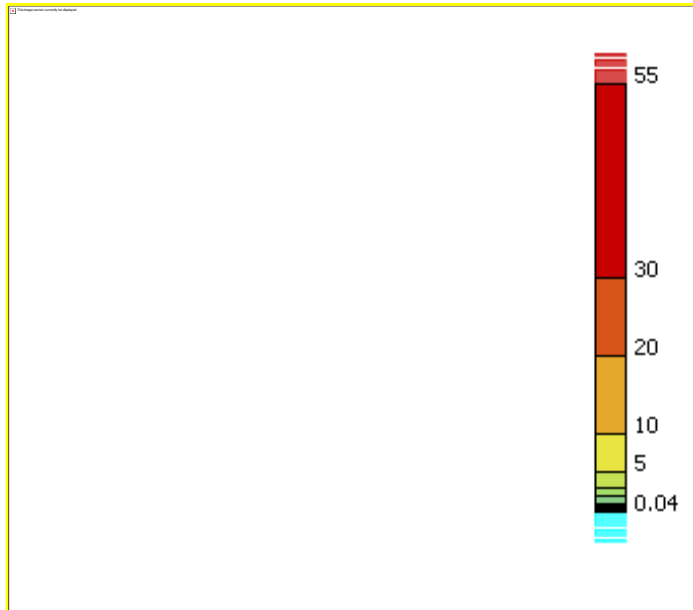
## Histogram



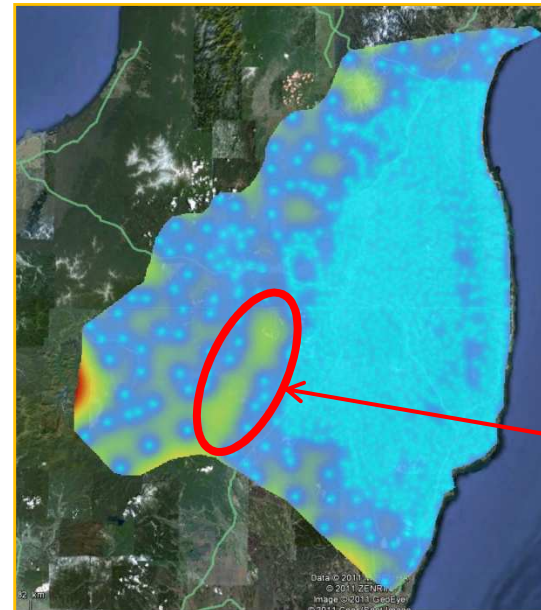
All presented maps were obtained with the software Kartotrak, with a Google Earth capture. The computations have been performed based on 2182 measures of dose rate.

# JAPAN, FUKUSHIMA (REGIONAL SCALE)

Data interpolation

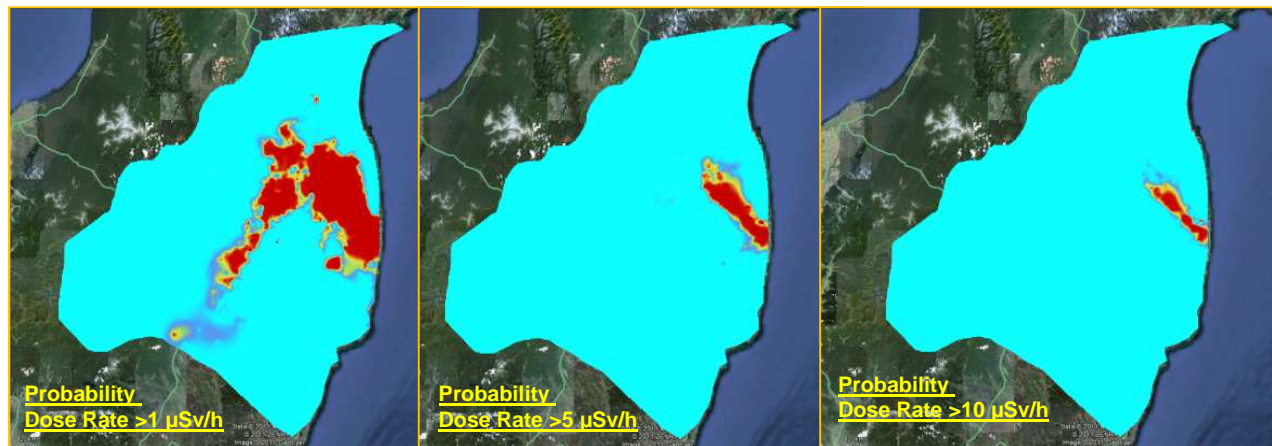


Uncertainty map



Having more data would be very interesting in this area

Probability maps





# JAPAN, FUKUSHIMA (REGIONAL SCALE)

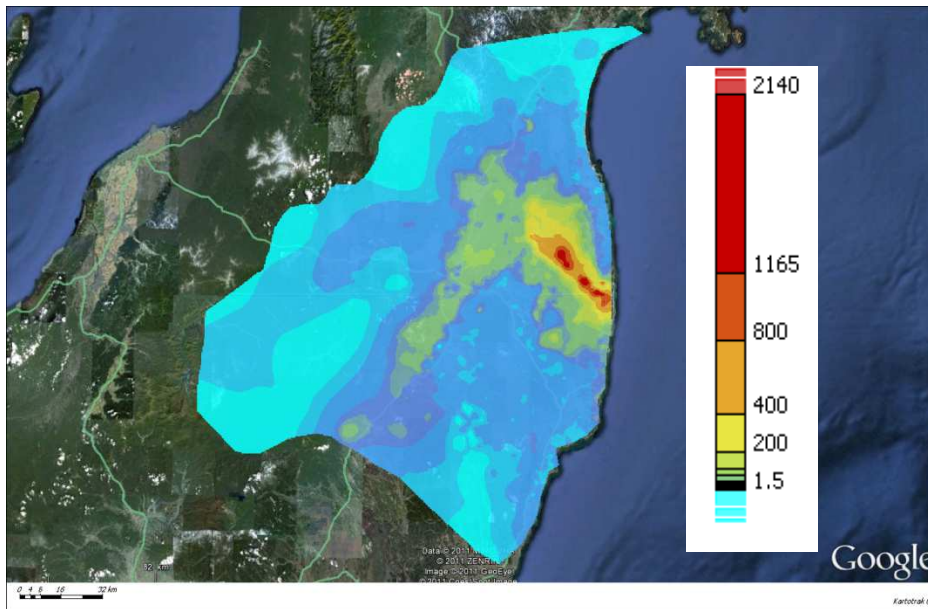
Based on the dose rate values, a modeling was performed in order to estimate the  $^{137}\text{Cs}$  mass activity, following these hypotheses :

- The dose rate was measured 1m above the ground surface.
- The contamination is spread on 1500m<sup>2</sup> and is 1cm thick.
- The density of the ground is 1.6.
- The nuclide considered is  $^{137}\text{Cs}$ .

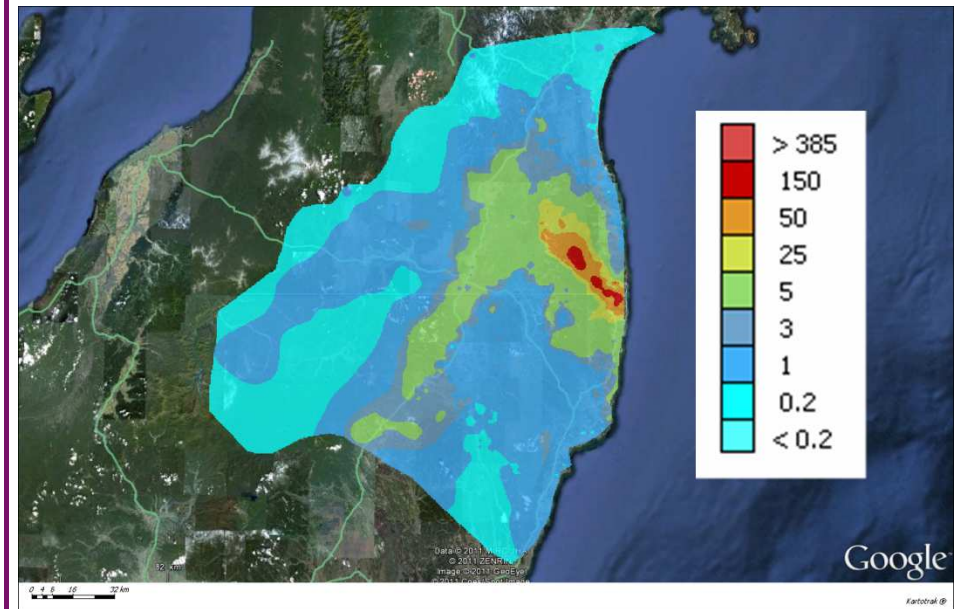
An **impact study** was carried out to assess the global dose for the population. Considering the following scenario :  
A family spends a lot of time in a **single house with a garden** and **vegetable garden** located on the contaminated site.

The people impacted, from a radiological exposition point of view, are **a parent at home and mostly their 5-year old child**. Over one year, the child is supposed to stay 1000 hours in the garden, 7760 hours inside the house, including 3300 hours of sleep. We assume as well that half the vegetable they eat come from their vegetable garden. We consider that this house does not have a well or pond.

*This scenario takes into account the ingestion, inhalation and extern exposition.*



$^{137}\text{Cs}$  mass activity (Bq/g)

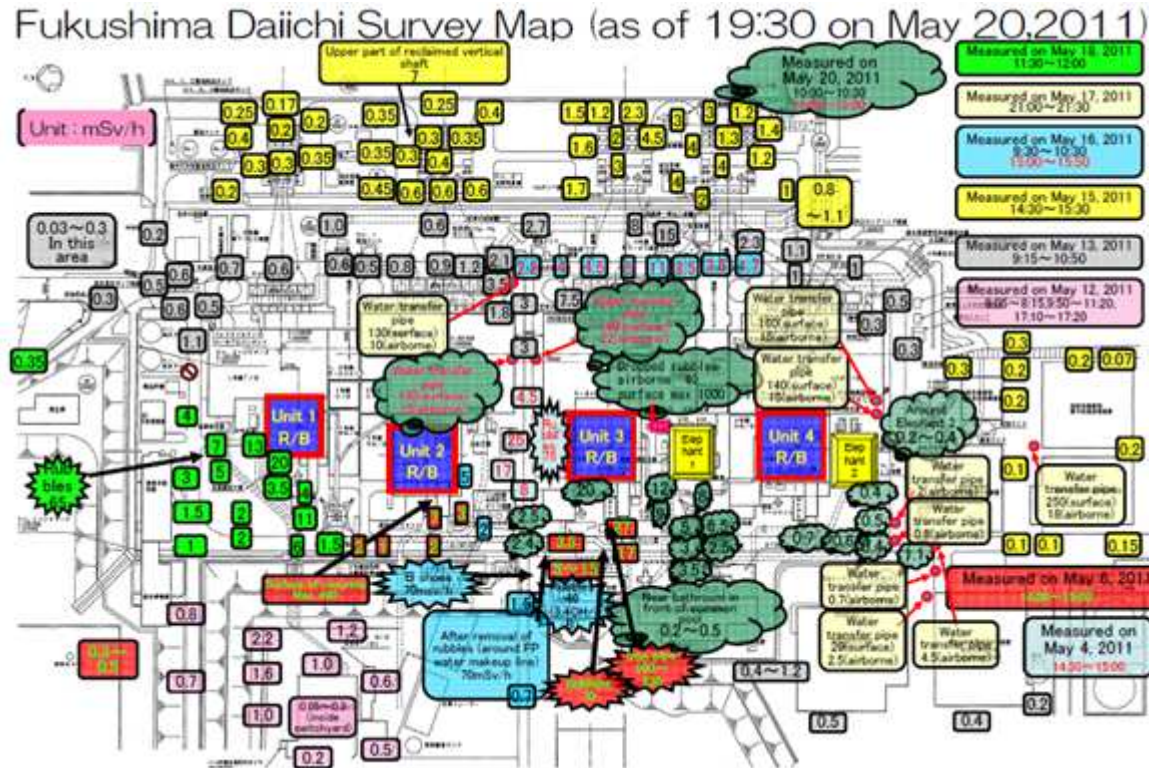


Yearly impact (mSv/yr)



# JAPAN, FUKUSHIMA (NUCLEAR SITE SCALE)

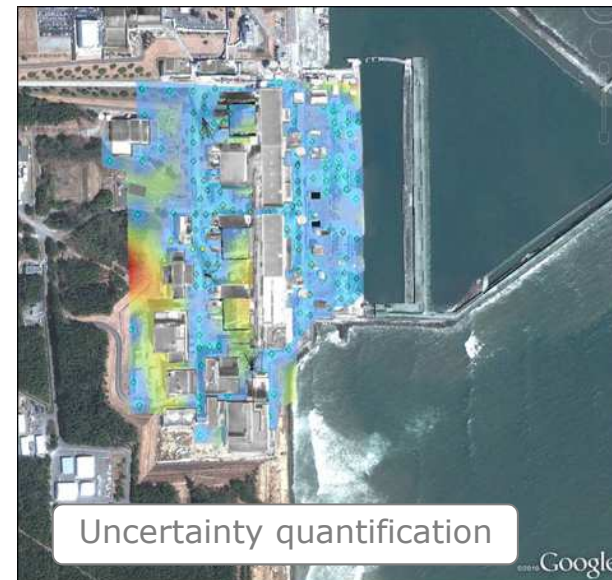
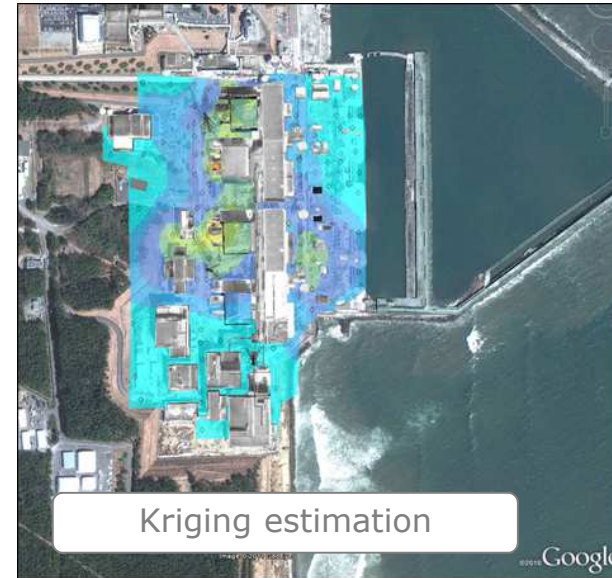
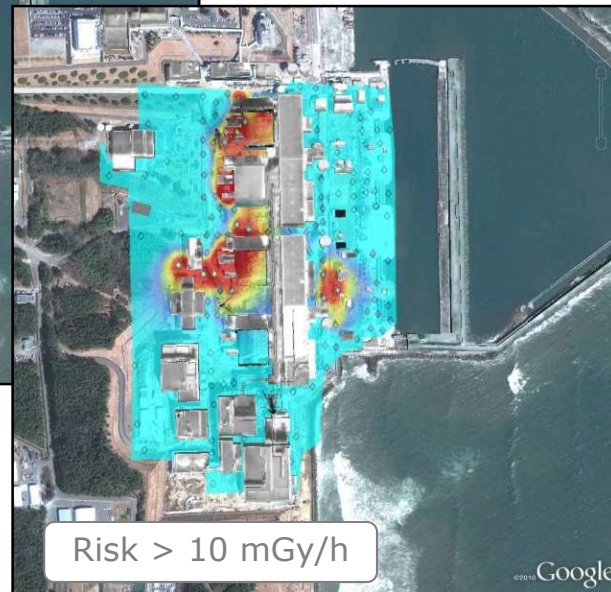
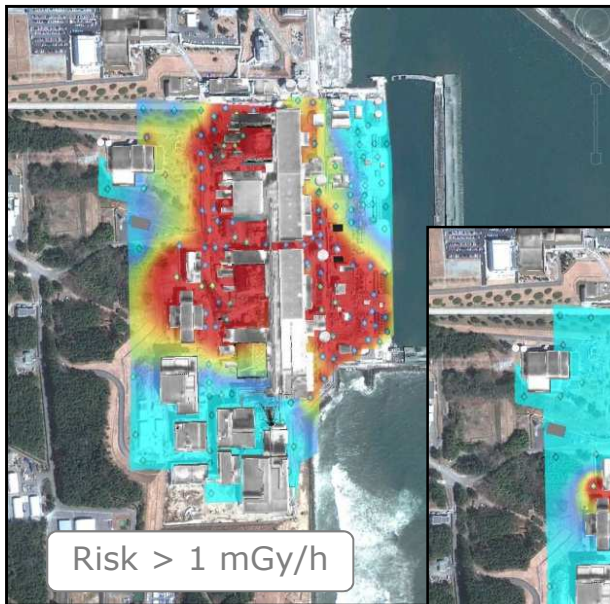
- Data collected by Tepco around Fukushima Daiichi Nuclear Power Plant during the first month after the accident



- Digitalization of survey maps (local coordiantes)
- Difficulties for data consolidation temporal variation, measurement protocol...

# JAPAN, FUKUSHIMA (NUCLEAR SITE SCALE)

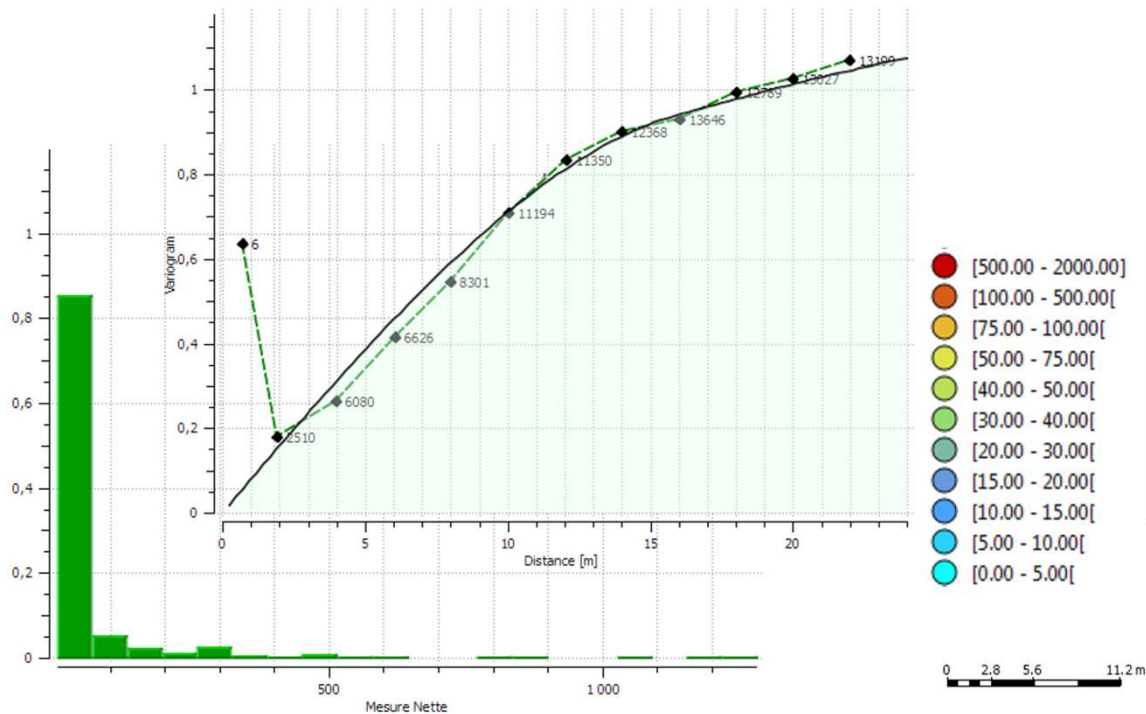
- Quick dose rate mapping
- Easy update (with additional data)
  
- Dose rate estimation for workers (risk maps and cumulative paths)





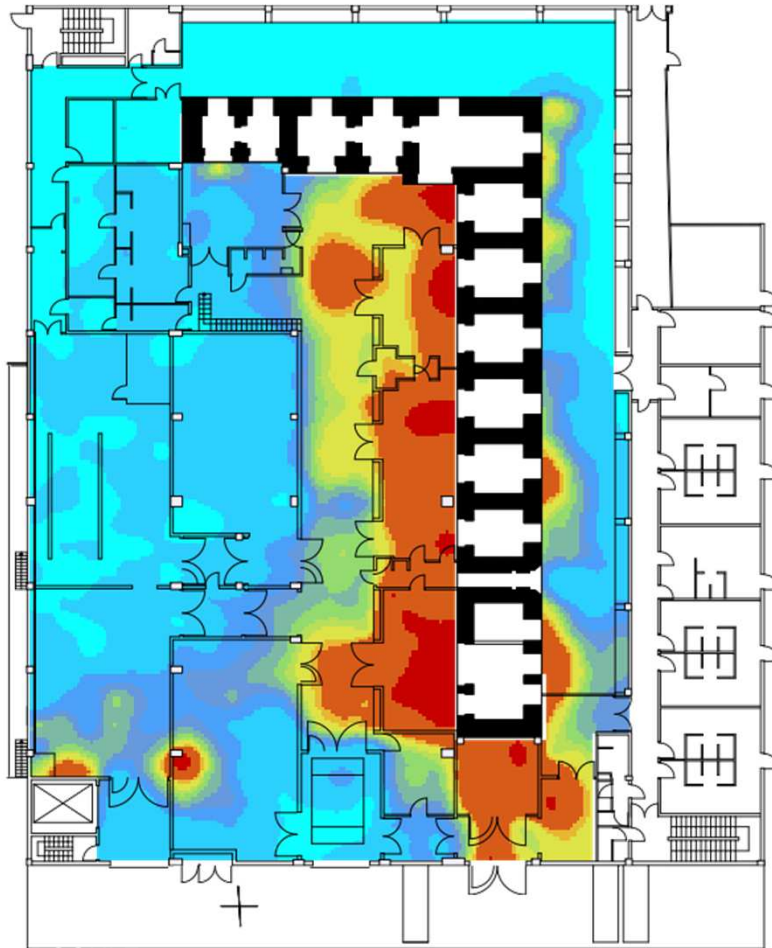
## Radio-metallurgy building at CEA-FAR

- Irradiated fuel between 1968 and 1982
- 1,500 m<sup>2</sup> per level
- Regular mesh: 1.5 m → 650 points

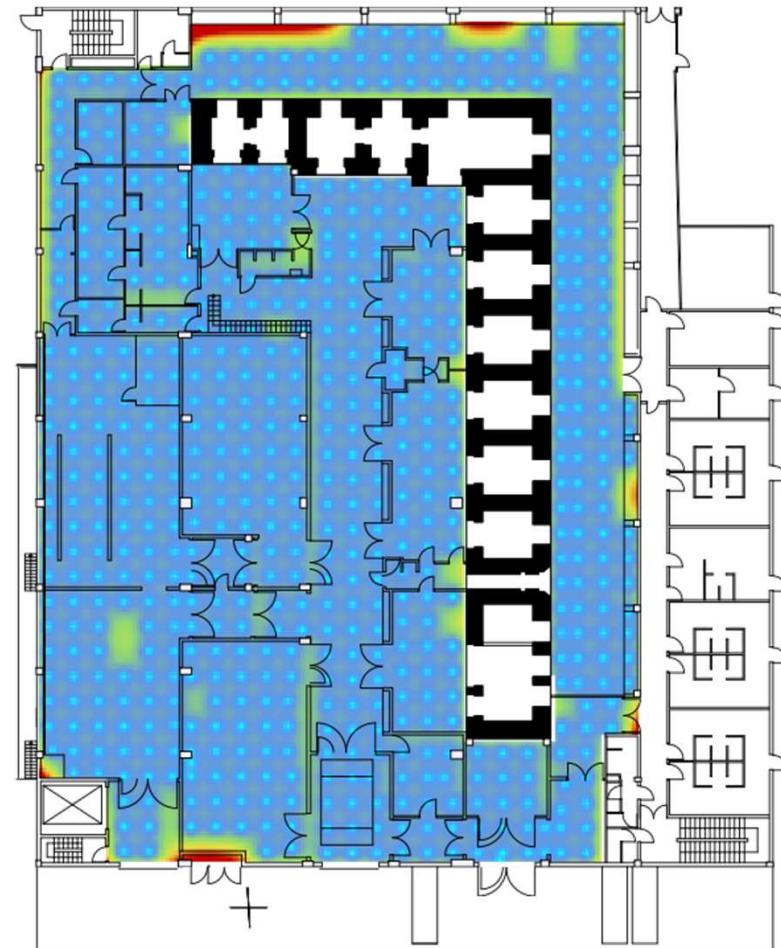


# BUILDING CHARACTERIZATION (RM2)

Kriging estimation



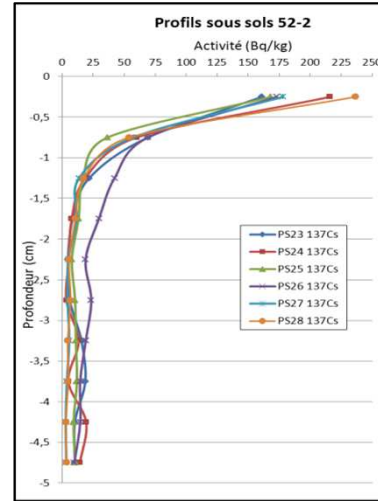
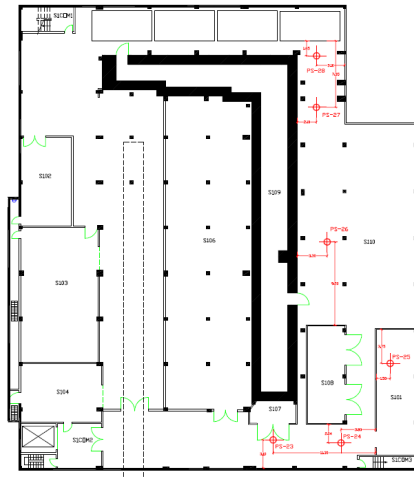
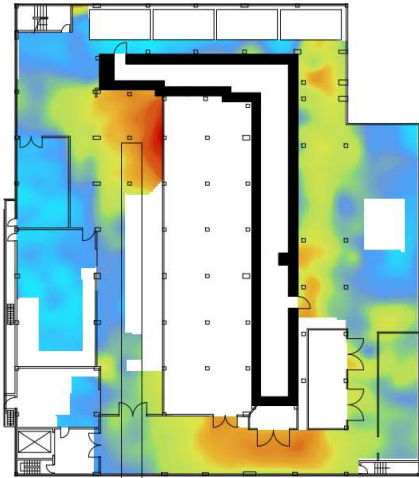
Kriging uncertainty





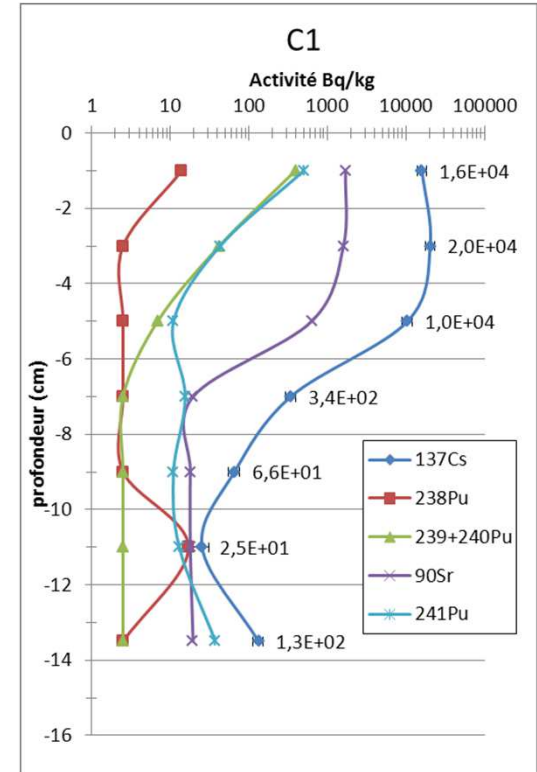
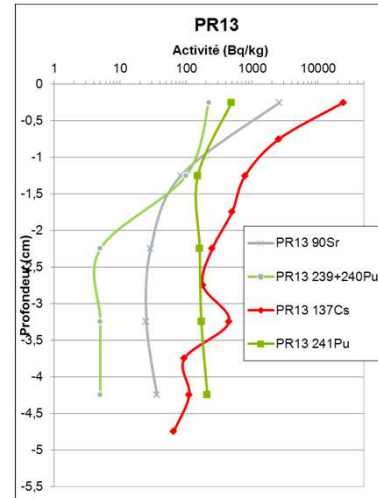
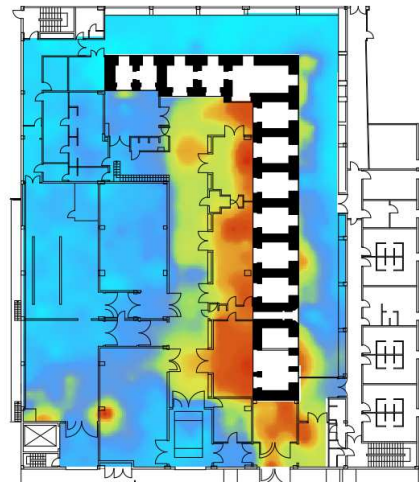
## 1<sup>st</sup> campaign: NaI, samples, profiles and spectrums examples

### Basement



Other singularities:  
activity <1Bq/g

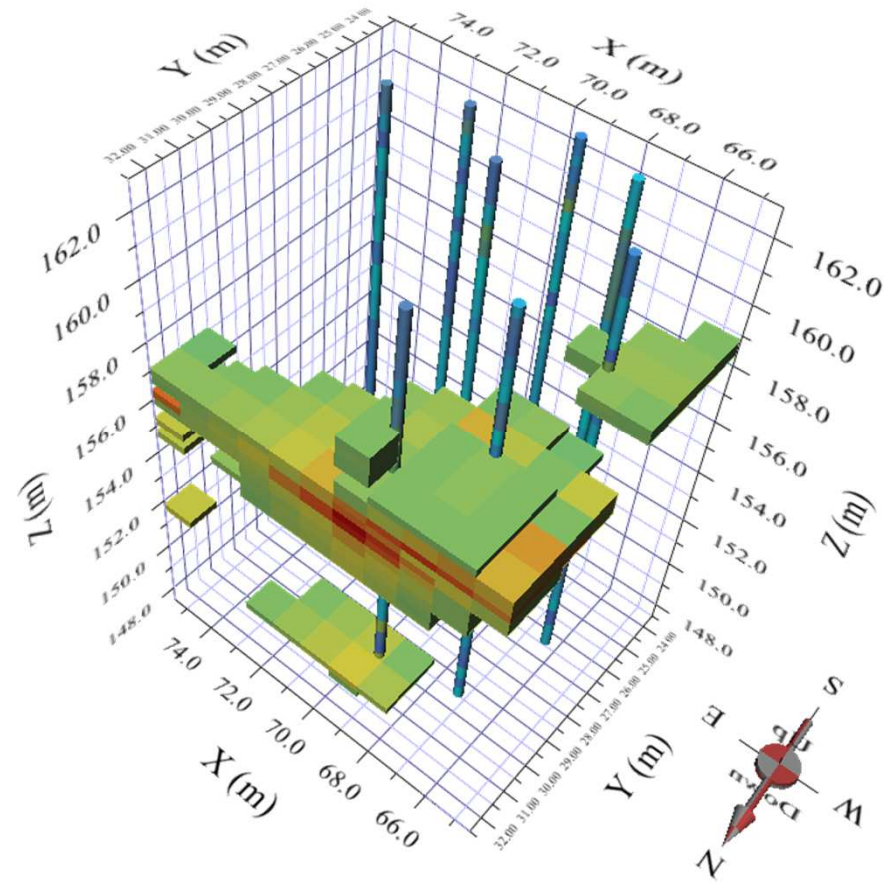
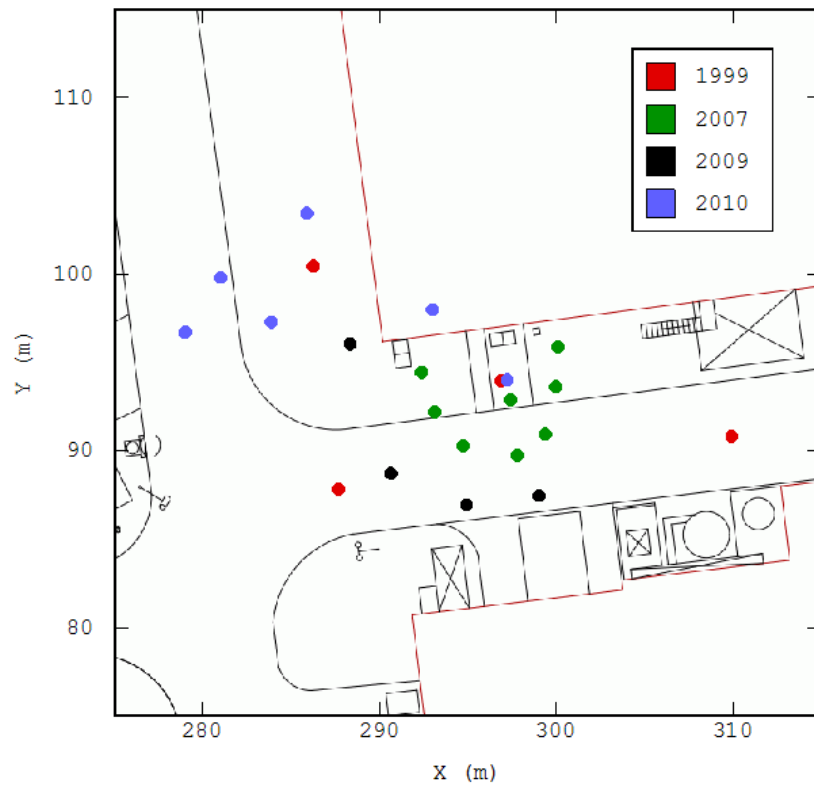
### Ground floor



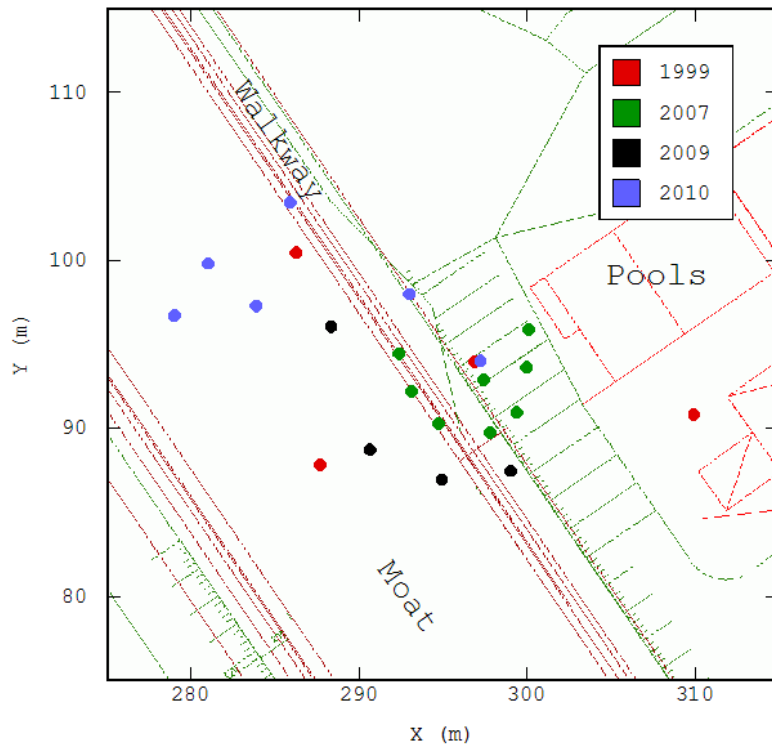
# A DEEP CONTAMINATION EXAMPLE (3D)

First data analysis (in 2007)

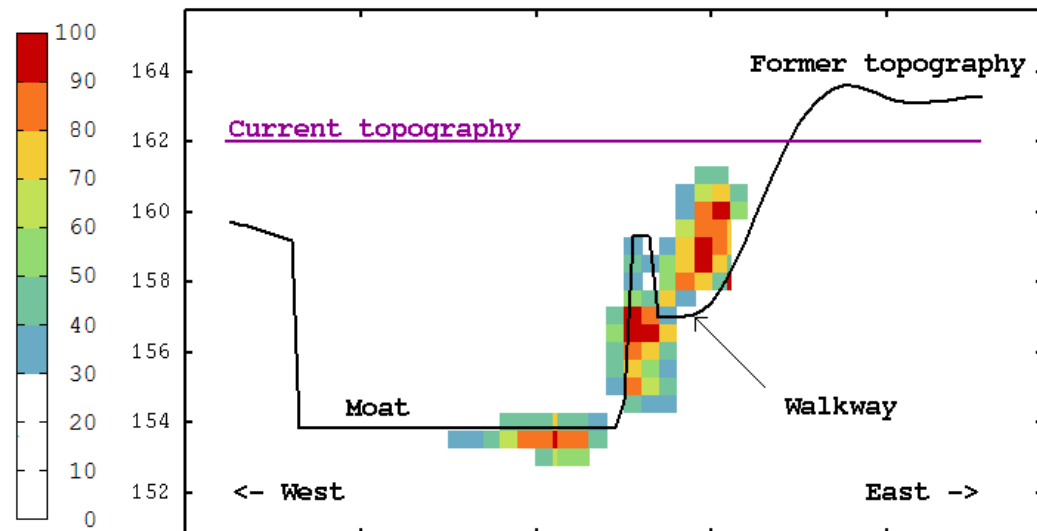
4 drilling campaigns



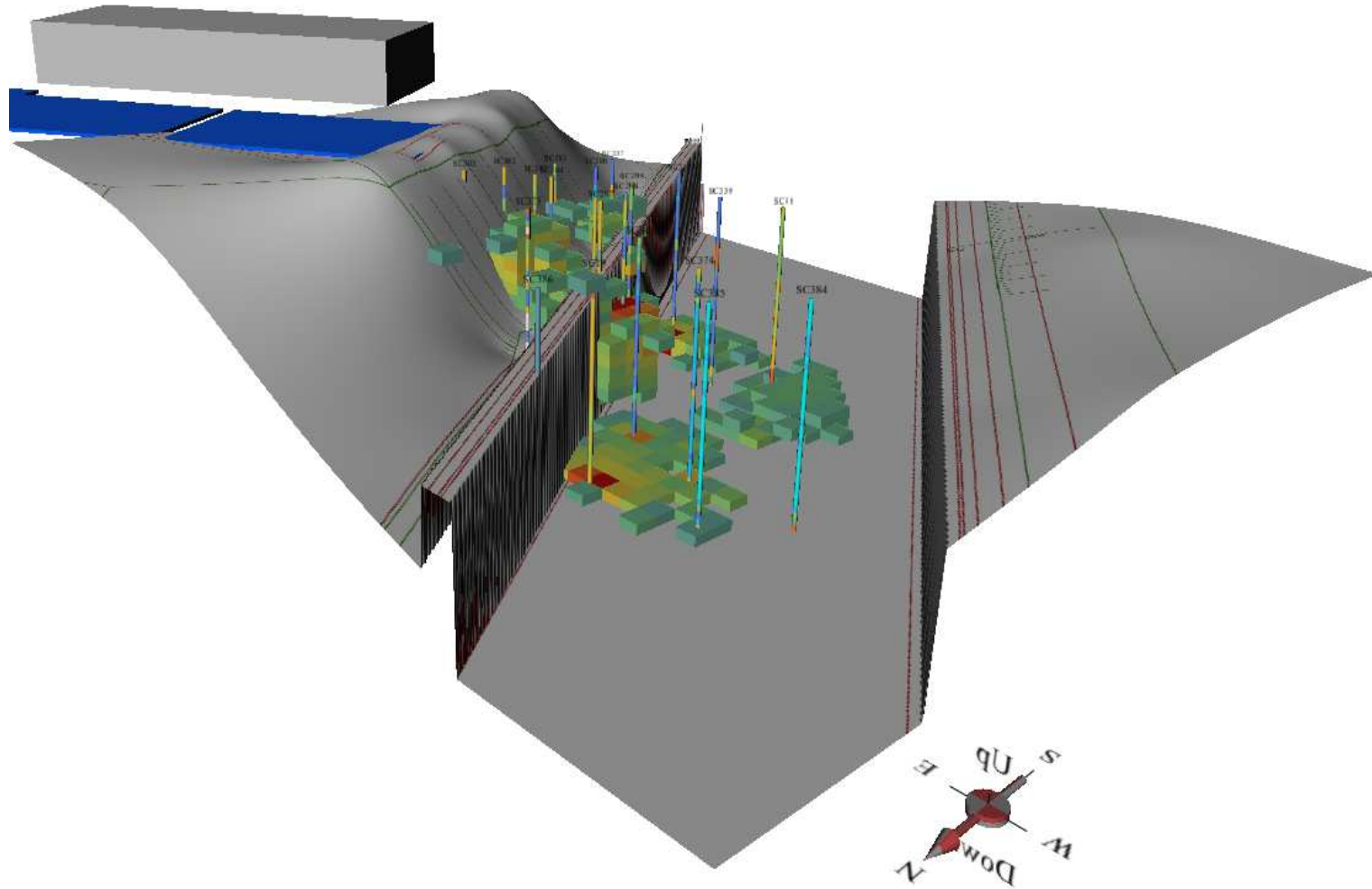
# INTEGRATION OF HISTORICAL INFORMATION



- Topography of the former military fortification (first generation of installations)
- Correct delineation and interpretation of contaminated areas



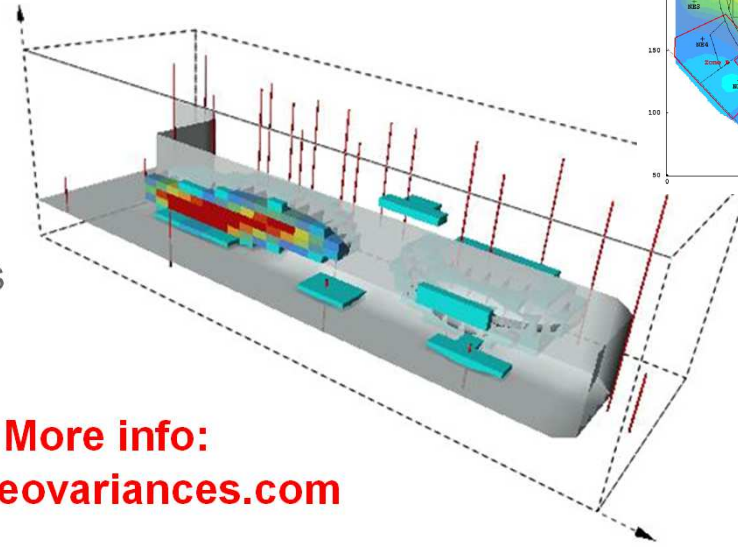
# 3D REPRESENTATION



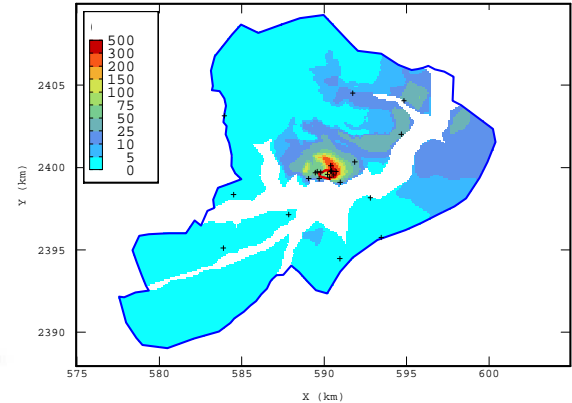
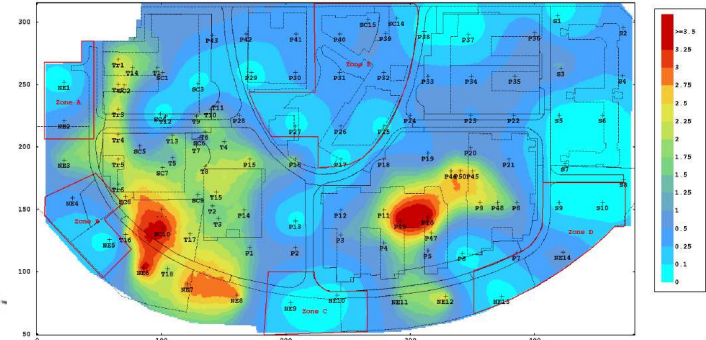
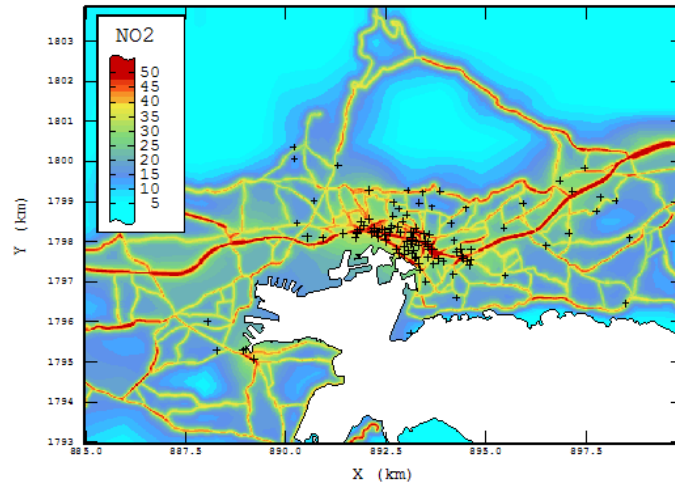
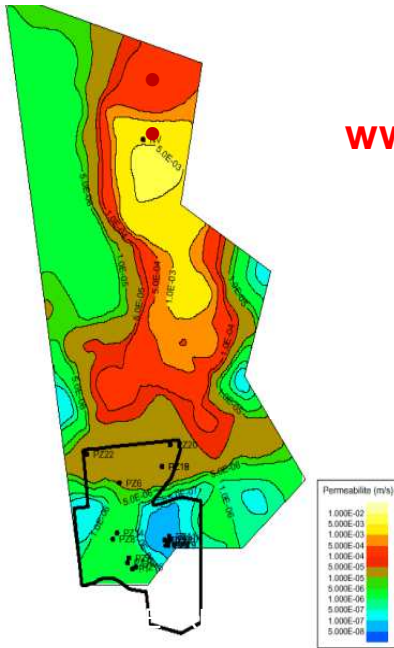


# OTHER APPLICATION FIELDS

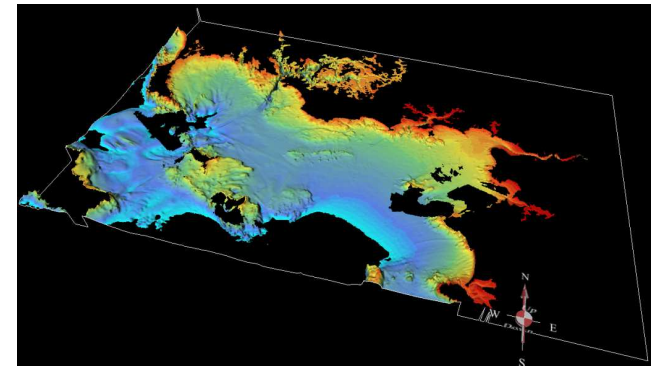
- Soil pollution
- Hydrogeology
- Air quality
- Bathymetry
- Civil engineering
- Fisheries...
  
- Mining - Oil & Gas



More info:  
[www.geovariances.com](http://www.geovariances.com)



Isatis - 3D Viewer



# CONCLUSIONS: ADDED VALUE OF GEOSTATISTICS

- **Explore and evaluate collected data**
  - Data cleaning and validation
  - handling data anomalies and outliers...
  
- **Get a reliable mapping of the radiological contamination**
  - Characterize the spatial behavior (variographic analysis)
  - Compute accurate maps using appropriate kriging algorithms
  - Assess the precision of the estimation map with the kriging variance
  - Refine the estimation map using correlated data (destructive / in situ) and indirect information (historical knowledge)
  
- **Quantify uncertainties on contaminated volumes (or surfaces)**
  - Compute the probability of exceeding a radiological threshold over a given remediation block
  - Get the probability distribution of contaminated materials and assess the uncertainty on the volumes
  
- **Optimize the investigation effort / sampling strategy**

## Context & Objectives:

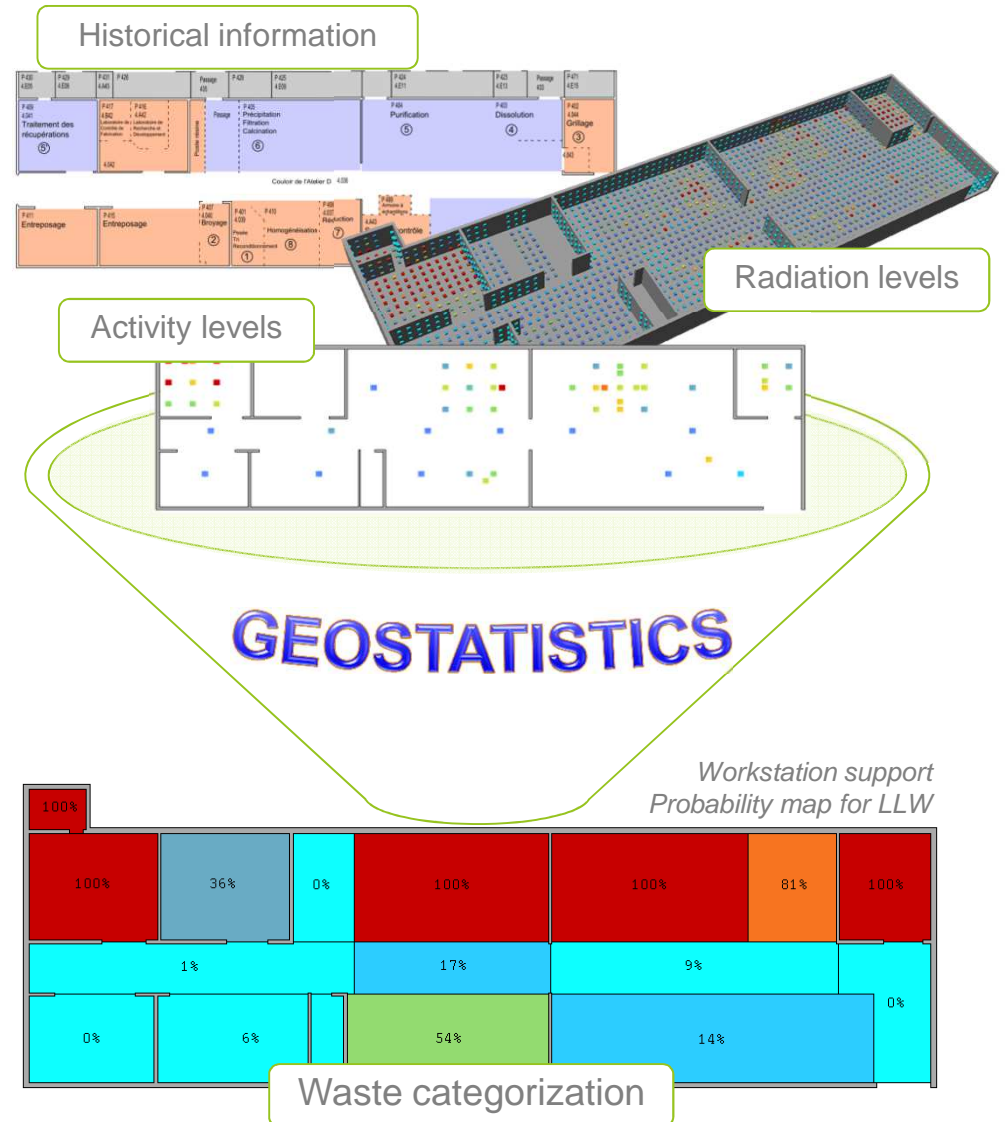
- Dismantling and decommissioning of ATUE facility (Uranium Workshops)
- Segregation and characterization of contaminated materials (mainly concrete structures)

## Methods:

- Multivariate analysis
- Non-linear estimations

## Outcomes:

- Optimization and rationalization of the **evaluation methodology**
- Providing essential **decision-making tools** for D&D projects saving time and money



## Context & Objectives:

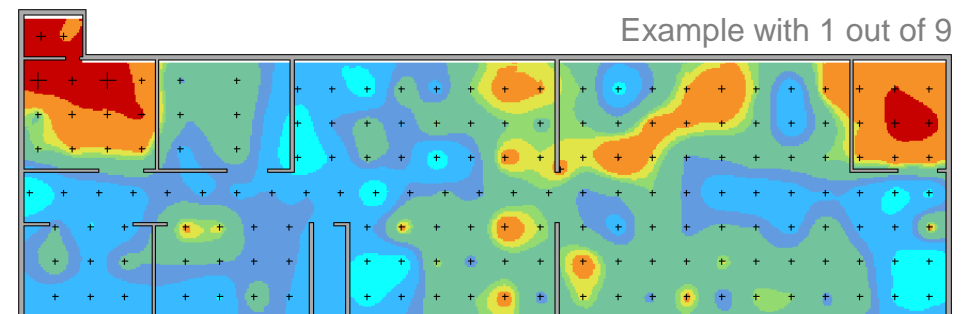
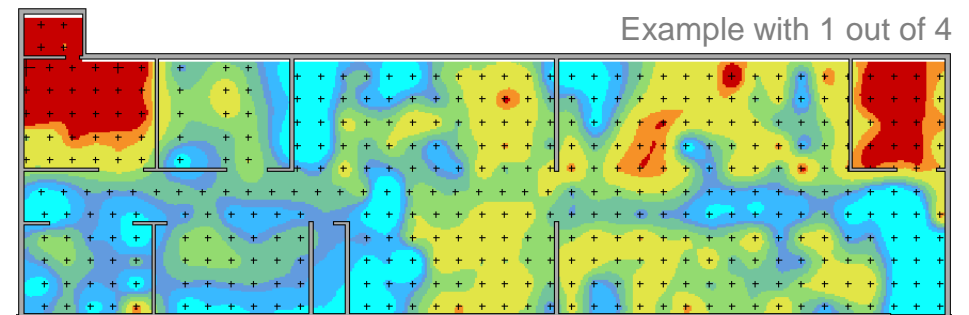
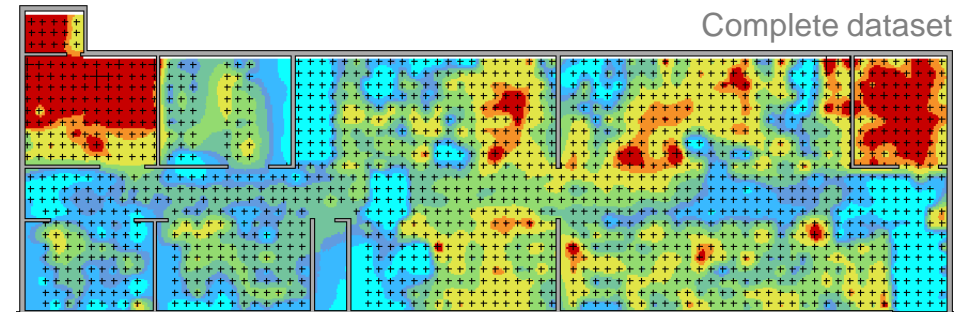
- Dismantling and decommissioning of ATUE facility (Uranium Workshops)
- Optimization and rationalization of the sampling strategy

## Methods:

- Variographic analysis
- Non-linear and multivariate techniques

## Outcomes:

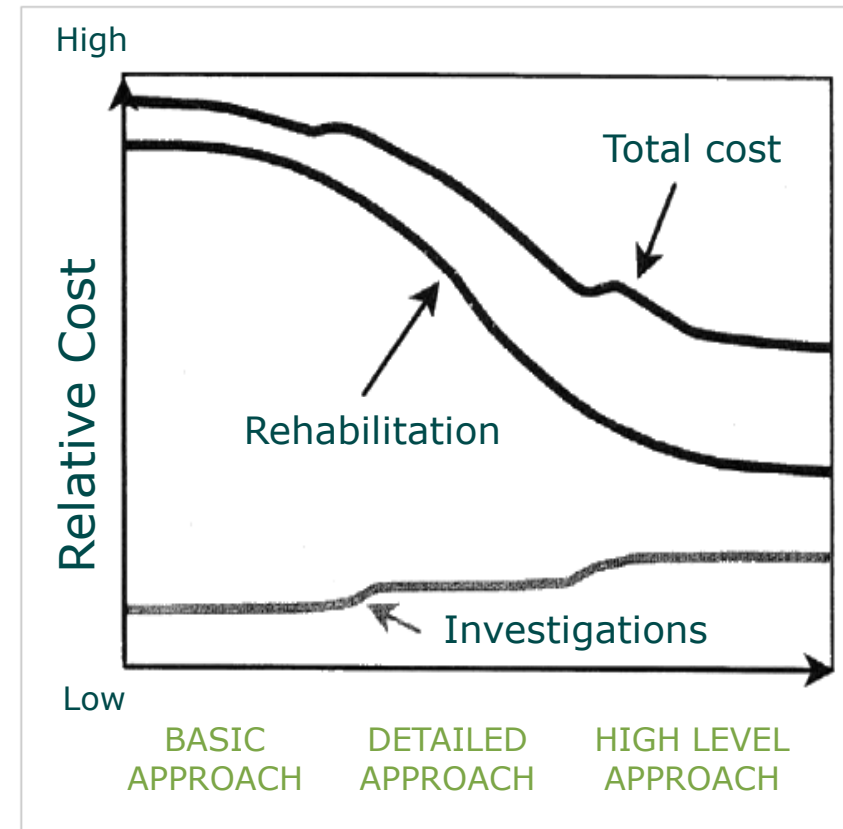
- Systematic presence of spatial continuity for radiological contamination
- Optimize the different sampling phases
  - Determination of the initial mesh
  - Nearly real-time mapping to optimize
  - Iterative sampling strategies





## CONCLUSIONS: RADIOLOGICAL CHARACTERIZATION

- Over 150 sites have been characterized with clean up methodology and tools
- Characterization of the waste before their removal
- Efficient tools and software making possible industrial optimized remediation projects
- Better controlled costs and deadlines
- Both for external areas and building structures



Better upstream characterization with surface and in-depth measures  
→ Better management of the remediation operations, respecting the projected cost and deadlines.